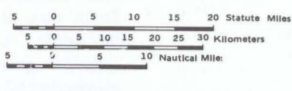


COVERAGE DIAGRAM FOR BLM OFFICIAL PROTRACTION DIAGRAMS

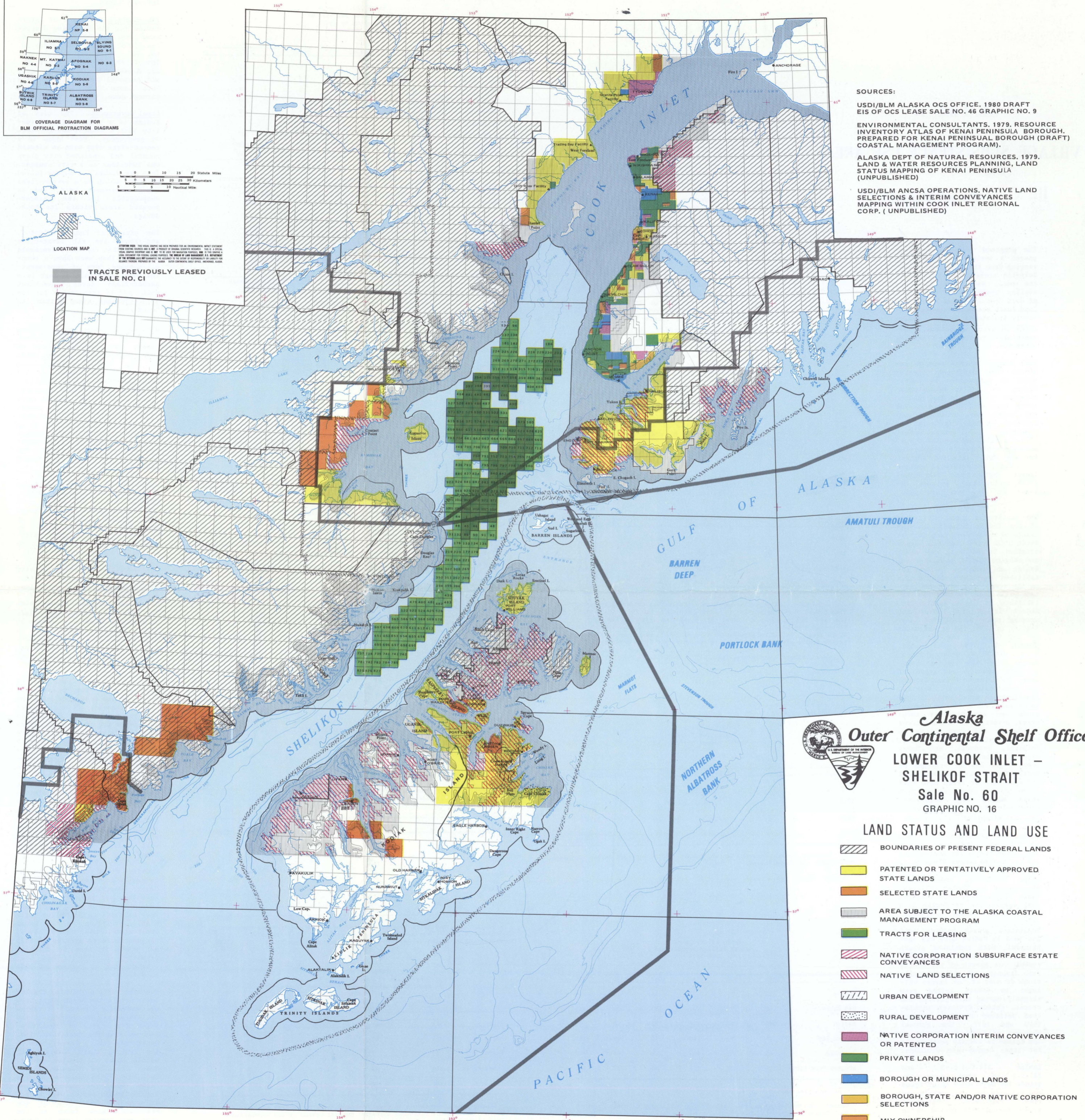


ALASKA

LOCATION MAP

TRACTS PREVIOUSLY LEASED IN SALE NO. CI

NOTATION: THIS MAP SHOWS THE BLM OFFICIAL PROTRACTION MAP FOR THE LOWER COOK INLET REGION. THIS MAP IS A SUMMARY OF THE BLM OFFICIAL PROTRACTION MAPS FOR THE LOWER COOK INLET REGION. THE BLM OFFICIAL PROTRACTION MAPS FOR THE LOWER COOK INLET REGION ARE THE BLM OFFICIAL PROTRACTION MAPS FOR THE LOWER COOK INLET REGION. THE BLM OFFICIAL PROTRACTION MAPS FOR THE LOWER COOK INLET REGION ARE THE BLM OFFICIAL PROTRACTION MAPS FOR THE LOWER COOK INLET REGION.



- SOURCES:
- USDI/BLM ALASKA OCS OFFICE, 1980 DRAFT EIS OF OCS LEASE SALE NO. 46 GRAPHIC NO. 9
 - ENVIRONMENTAL CONSULTANTS, 1979, RESOURCE INVENTORY ATLAS OF KENAI PENINSULA BOROUGH, PREPARED FOR KENAI PENINSULA BOROUGH (DRAFT COASTAL MANAGEMENT PROGRAM).
 - ALASKA DEPT OF NATURAL RESOURCES, 1979, LAND & WATER RESOURCES PLANNING, LAND STATUS MAPPING OF KENAI PENINSULA (UNPUBLISHED)
 - USDI/BLM ANCSA OPERATIONS, NATIVE LAND SELECTIONS & INTERIM CONVEYANCES MAPPING WITHIN COOK INLET REGIONAL CORP. (UNPUBLISHED)



Alaska Outer Continental Shelf Office

LOWER COOK INLET - SHELIKOF STRAIT

Sale No. 60
GRAPHIC NO. 16

LAND STATUS AND LAND USE

- BOUNDARIES OF PRESENT FEDERAL LANDS
- PATENTED OR TENTATIVELY APPROVED STATE LANDS
- SELECTED STATE LANDS
- AREA SUBJECT TO THE ALASKA COASTAL MANAGEMENT PROGRAM
- TRACTS FOR LEASING
- NATIVE CORPORATION SUBSURFACE ESTATE CONVEYANCES
- NATIVE LAND SELECTIONS
- URBAN DEVELOPMENT
- RURAL DEVELOPMENT
- NATIVE CORPORATION INTERIM CONVEYANCES OR PATENTED
- PRIVATE LANDS
- BOROUGH OR MUNICIPAL LANDS
- BOROUGH, STATE AND/OR NATIVE CORPORATION SELECTIONS
- MIX OWNERSHIP
- BOROUGH BOUNDARIES
- REGIONAL NATIVE CORPORATION BOUNDARIES