

**Fishery Management Report No. 17-53**

---

---

**Fishery Management Plan for the South Alaska  
Peninsula Area State-Waters Pacific Cod Season, 2018**

by

**Natura Richardson**

and

**Kayla Bevaart**

December 2017

---

---

Alaska Department of Fish and Game

Divisions of Sport Fish and Commercial Fisheries



## Symbols and Abbreviations

The following symbols and abbreviations, and others approved for the *Système International d'Unités* (SI), are used without definition in the following reports by the Divisions of Sport Fish and of Commercial Fisheries: Fishery Manuscripts, Fishery Data Series Reports, Fishery Management Reports, and Special Publications. All others, including deviations from definitions listed below, are noted in the text at first mention, as well as in the titles or footnotes of tables, and in figure or figure captions.

<b>Weights and measures (metric)</b>		<b>General</b>		<b>Mathematics, statistics</b>	
centimeter	cm	Alaska Administrative Code	AAC	<i>all standard mathematical signs, symbols and abbreviations</i>	
deciliter	dL	all commonly accepted abbreviations	e.g., Mr., Mrs., AM, PM, etc.	alternate hypothesis	$H_A$
gram	g	all commonly accepted professional titles	e.g., Dr., Ph.D., R.N., etc.	base of natural logarithm	$e$
hectare	ha	at	@	catch per unit effort	CPUE
kilogram	kg	compass directions:		coefficient of variation	CV
kilometer	km	east	E	common test statistics	(F, t, $\chi^2$ , etc.)
liter	L	north	N	confidence interval	CI
meter	m	south	S	correlation coefficient	
milliliter	mL	west	W	(multiple)	R
millimeter	mm	copyright	©	correlation coefficient (simple)	r
		corporate suffixes:		covariance	cov
<b>Weights and measures (English)</b>		Company	Co.	degree (angular)	$^\circ$
cubic feet per second	ft <sup>3</sup> /s	Corporation	Corp.	degrees of freedom	df
foot	ft	Incorporated	Inc.	expected value	$E$
gallon	gal	Limited	Ltd.	greater than	>
inch	in	District of Columbia	D.C.	greater than or equal to	$\geq$
mile	mi	et alii (and others)	et al.	harvest per unit effort	HPUE
nautical mile	nmi	et cetera (and so forth)	etc.	less than	<
ounce	oz	exempli gratia	e.g.	less than or equal to	$\leq$
pound	lb	(for example)		logarithm (natural)	ln
quart	qt	Federal Information Code	FIC	logarithm (base 10)	log
yard	yd	id est (that is)	i.e.	logarithm (specify base)	log <sub>2</sub> , etc.
		latitude or longitude	lat or long	minute (angular)	'
<b>Time and temperature</b>		monetary symbols (U.S.)	\$, ¢	not significant	NS
day	d	months (tables and figures): first three letters	Jan, ..., Dec	null hypothesis	$H_0$
degrees Celsius	°C	registered trademark	®	percent	%
degrees Fahrenheit	°F	trademark	™	probability	P
degrees kelvin	K	United States (adjective)	U.S.	probability of a type I error (rejection of the null hypothesis when true)	$\alpha$
hour	h	United States of America (noun)	USA	probability of a type II error (acceptance of the null hypothesis when false)	$\beta$
minute	min	U.S.C.	United States Code	second (angular)	"
second	s	U.S. state	use two-letter abbreviations (e.g., AK, WA)	standard deviation	SD
<b>Physics and chemistry</b>				standard error	SE
all atomic symbols				variance	
alternating current	AC			population sample	Var
ampere	A			sample	var
calorie	cal				
direct current	DC				
hertz	Hz				
horsepower	hp				
hydrogen ion activity (negative log of)	pH				
parts per million	ppm				
parts per thousand	ppt, ‰				
volts	V				
watts	W				

***FISHERY MANAGEMENT REPORT NO. 17-53***

**FISHERY MANAGEMENT PLAN FOR THE SOUTH ALASKA  
PENINSULA AREA STATE-WATERS PACIFIC COD SEASON, 2018**

by

Natura Richardson  
and  
Kayla Bevaart

Alaska Department of Fish and Game  
Division of Sport Fish, Research and Technical Services  
333 Raspberry Road, Anchorage, Alaska, 99518-1565

December 2017

The Fishery Management Reports series was established in 1989 by the Division of Sport Fish for the publication of an overview of management activities and goals in a specific geographic area, and became a joint divisional series in 2004 with the Division of Commercial Fisheries. Fishery Management Reports are intended for fishery and other technical professionals, as well as lay persons. Fishery Management Reports are available through the Alaska State Library and on the Internet: <http://www.adfg.alaska.gov/sf/publications/>. This publication has undergone regional peer review.

*Natura Richardson  
and  
Kayla Bevaart  
Alaska Department of Fish and Game, Division of Commercial Fisheries  
351 Research Court, Kodiak, AK 99615, USA*

*This document should be cited as follows:*

*Richardson, N., and K. Bevaart. 2018. Fishery management plan for the South Alaska Peninsula Area state-waters Pacific cod season, 2018. Alaska Department of Fish and Game, Fishery Management Report No. 17-53, Anchorage.*

The Alaska Department of Fish and Game (ADF&G) administers all programs and activities free from discrimination based on race, color, national origin, age, sex, religion, marital status, pregnancy, parenthood, or disability. The department administers all programs and activities in compliance with Title VI of the Civil Rights Act of 1964, Section 504 of the Rehabilitation Act of 1973, Title II of the Americans with Disabilities Act (ADA) of 1990, the Age Discrimination Act of 1975, and Title IX of the Education Amendments of 1972.

**If you believe you have been discriminated against in any program, activity, or facility please write:**

ADF&G ADA Coordinator, P.O. Box 115526, Juneau, AK 99811-5526  
U.S. Fish and Wildlife Service, 4401 N. Fairfax Drive, MS 2042, Arlington, VA 22203  
Office of Equal Opportunity, U.S. Department of the Interior, 1849 C Street NW MS 5230, Washington DC 20240

**The department's ADA Coordinator can be reached via phone at the following numbers:**

(VOICE) 907-465-6077, (Statewide Telecommunication Device for the Deaf) 1-800-478-3648,  
(Juneau TDD) 907-465-3646, or (FAX) 907-465-6078

**For information on alternative formats and questions on this publication, please contact:**

ADF&G Division of Sport Fish, Research and Technical Services, 333 Raspberry Rd, Anchorage AK 99518 (907) 267-2375.

# TABLE OF CONTENTS

	Page
LIST OF FIGURES .....	ii
LIST OF APPENDICES .....	ii
ABSTRACT .....	1
INTRODUCTION .....	1
Area Description.....	1
Overview .....	1
Parallel Pacific Cod Fishery .....	1
State-Waters Pacific Cod Fishery .....	2
STATE-WATERS PACIFIC COD REGULATIONS.....	2
Overview .....	2
2018 Guideline Harvest Level .....	2
Season Dates, Season Opening Weather Delay, and GHL Rollover Provisions .....	3
Pot Gear .....	3
Jig Gear.....	3
Concurrent Fisheries .....	3
Weather Delay .....	4
GHL Rollover Provisions .....	4
Vessel Registration Requirements and Size Restrictions .....	4
Legal Gear, Gear Limits, and Pot Buoy Tags.....	5
Pot Buoy Marking Requirements .....	5
Pot Storage and Gear Configuration.....	6
Landing Requirements.....	6
Bycatch.....	6
Concurrent Groundfish Fisheries.....	7
CATCH REPORTING .....	7
INSEASON ANNOUNCEMENTS.....	7
FIGURES .....	9
APPENDIX A. LIST OF FISHERY CONTACTS BY AREA AND LOCATION .....	15
APPENDIX B. EXAMPLE OF REPORTING WORKSHEET .....	17
APPENDIX C. SUMMARY OF DATES AND STATE-WATERS GUIDELINE HARVEST LEVELS .....	19

## LIST OF FIGURES

<b>Figure</b>		<b>Page</b>
1.	South Alaska Peninsula Area for state-waters Pacific cod from Kupreanof Point to Unimak Island. ....	10
2.	South Alaska Peninsula Area for state-waters Pacific cod from Unimak Island to long 170° W. ....	11
3.	Steller sea lion restrictions for pot and longline gear during the parallel Pacific cod fishery in the South Alaska Peninsula Area, Kupreanof Point to Scotch Cap. ....	12
4.	Steller sea lion restrictions for pot and longline gear during the parallel Pacific cod fishery in the South Alaska Peninsula Area, Scotch Cap to long 170° W. ....	13

## LIST OF APPENDICES

<b>Appendix</b>		<b>Page</b>
A1.	List of fishery contacts by agency and location. ....	16
B1.	Example of reporting worksheet. ....	18
C1.	Summary of Kodiak, Chignik, and South Alaska Peninsula parallel and state-waters Pacific cod season dates and state-waters guideline harvest levels by gear type. ....	20

## ABSTRACT

This document provides an overview of regulations effective for the 2018 South Alaska Peninsula Area state-waters Pacific cod *Gadus macrocephalus* season. The 2018 South Alaska Peninsula Area state-waters Pacific cod season for pot gear is scheduled to open 7 days after closure of the Western Gulf of Alaska (WGOA) federal/parallel Pacific cod pot sector A season or March 7, whichever is later. The 2018 South Alaska Peninsula Area state-waters Pacific cod season for jig gear is scheduled to open 48 hours after closure of the WGOA federal/parallel Pacific cod jig gear sector A season; however, if the WGOA jig gear sector has not closed by March 15, the state-waters jig gear season may open, based on assessment of effort, harvest rate, and remaining federal jig quota. Vessels participating in the state-waters or parallel Pacific cod seasons may not exceed 58 feet in length, and legal gear is limited to pot, mechanical jigging machine, and hand troll gear. No more than 60 groundfish pots or 5 mechanical jigging machines may be operated from a vessel. The 2018 South Alaska Peninsula Area state-waters season Pacific cod guideline harvest level (GHL) is 5,345,273 pounds. Pot gear vessels are allocated 85% of the total GHL (4,543,482 pounds); jig gear vessels are allocated 15% of the total GHL (801,791 pounds).

Key words: Pacific cod, *Gadus macrocephalus*, South Alaska Peninsula Area, management plan, regulations, jigging machine, pot, guideline harvest level, parallel season, state-waters season

## INTRODUCTION

### AREA DESCRIPTION

The South Alaska Peninsula groundfish registration area consists of all waters between a line extending 135° southeast from Kupreanof Point (lat 55° 33.98' N, long 159° 35.88' W) and long 170° W near western Chuginadak Island (Figures 1 and 2).

### OVERVIEW

Two distinct Pacific cod *Gadus macrocephalus* fisheries occur within state waters (0–3 nmi) of the South Alaska Peninsula Area. The parallel fishery is prosecuted concurrent to the federal Western Gulf of Alaska (WGOA) and is managed by adopting most National Marine Fisheries Service (NMFS) regulations and inseason management actions. The South Alaska Peninsula Area state-waters fishery is prosecuted independent of the federal/parallel fishery and is managed exclusively by Alaska Department of Fish and Game (ADF&G) under guidelines developed by the Alaska Board of Fisheries (BOF).

### Parallel Pacific Cod Fishery

When the federal (3–200 nmi) WGOA area is open to directed Pacific cod fishing, ADF&G opens a concurrent parallel fishery inside state waters (0–3 nmi). Unless specifically prohibited, the same gear types in the federal Pacific cod fishery are allowed during the parallel fishery although nonpelagic trawl vessels are prohibited from fishing inside most state waters in the South Alaska Peninsula Area (5 AAC 39.164(b)(3)). Vessels targeting Pacific cod during the South Alaska Peninsula Area parallel fishery may not exceed 58 feet in overall length (5 AAC 28.577(b)).

With the exception of vessels using jig gear, all vessels that participate in the parallel Pacific cod fishery must have an activated vessel monitoring system (VMS; 5 AAC 28.087(c)). Steller sea lion *Eumetopias jubatus* restrictions during the South Alaska Peninsula parallel fishery match federal management measures with the exception of the haul out on Caton Island for vessels using pot and jig gear ((5 AAC 28.087); Figures 3 and 4).

Vessels that fish exclusively in the South Alaska Peninsula Area parallel Pacific cod fishery are not required to possess a federal fishing permit (FFP) or a Pacific cod gear endorsement

administered through the federal License Limitation Program (LLP). Vessels with an FFP should be aware of federal regulations regarding observer coverage, catch reporting, Stellar sea lion *Eumetopias jubatus* closures, and LLP requirements prior to participating in the South Alaska Peninsula Area parallel Pacific cod fishery.

The parallel Pacific cod fishery is divided into 2 seasons: the A season and B season. The parallel Pacific cod A season opens January 1 to pot, longline, and jig gear sectors. The Pacific cod jig gear sector B season opens June 10. The B season for all other gear sectors opens September 1.

Pacific cod harvested during the parallel fishery are deducted from the federal gear-specific sector harvest allocation. Parallel Pacific cod seasons for the pot and longline sectors close when their respective sector harvest allocations are achieved. The parallel Pacific cod A season for the jig gear sector closes when the jig gear sector harvest allocation is achieved; however, if the A season jig sector harvest allocation has not been achieved by March 15, the parallel jig gear season may close on or about March 15 to allow the South Alaska Peninsula Area state-waters jig gear season to open.

For additional information regarding federal Pacific cod regulations and harvest updates, contact NMFS Sustainable Fisheries Division (1-800-304-4846 #3), NMFS Office of Law Enforcement (907-486-3298), or the NMFS Observer Program (206-526-4195). For other information regarding the parallel fishery, contact ADF&G in Kodiak (907-486-1840; Appendix A1).

### **State-Waters Pacific Cod Fishery**

State-waters (0–3 nmi) Pacific cod fisheries are open access fisheries and are prosecuted independent of federal/parallel fisheries. Information specific to the 2018 South Alaska Peninsula Area state-waters Pacific cod fishery is outlined below.

## **STATE-WATERS PACIFIC COD REGULATIONS**

### **OVERVIEW**

Regulations pertaining to the South Alaska Peninsula Area Pacific cod fisheries begin on page 55 of the 2017–2018 Statewide Commercial Groundfish Fishing Regulations booklet. ADF&G manages the South Alaska Peninsula Area state-waters Pacific cod season in accordance with the *South Alaska Peninsula Area Pacific Cod Management Plan* (5 AAC 28.577). The following is a summary of important regulations that will govern the 2018 South Alaska Peninsula Area state-waters Pacific cod season.

### **2018 GUIDELINE HARVEST LEVEL**

The guideline harvest level (GHL) for the state-waters Pacific cod season is based on 30% of the WGOA Acceptable Biological Catch (ABC) for Pacific cod. The 2018 GHL for the South Alaska Peninsula Area state-waters Pacific cod fishery is 5,345,273 pounds. By regulation, 85% of the total GHL (4,543,482 pounds) is allocated to pot gear vessels and 15% of the total GHL (801,791 pounds) is allocated to jig gear vessels.



## **SEASON DATES, SEASON OPENING WEATHER DELAY, AND GHIL ROLLOVER PROVISIONS**

### **Pot Gear**

The 2018 South Alaska Peninsula Area state-waters Pacific cod season for pot gear will open at noon March 7 or 7 days after closure of the WGOA federal/parallel Pacific cod pot gear sector A season, whichever is later. The state-waters season for pot gear will close when the South Alaska Peninsula Area Pacific cod pot gear GHIL allocation has been harvested.

If the state-waters pot gear GHIL allocation has not been fully harvested by August 28, the state-waters pot gear season will close on August 28 to allow the WGOA federal/parallel Pacific cod pot gear sector B season to open on September 1. A summary of state-waters and parallel season dates is located in Appendix C1.

### **Jig Gear**

The South Alaska Peninsula Area state-waters Pacific cod season for jig gear will open 48 hours after closure of the WGOA federal/parallel Pacific cod jig gear sector A season. If the WGOA federal/parallel jig gear sector A season has not closed by March 15, ADF&G may close the parallel (0–3 nmi) jig sector season on or after March 15 and open the South Alaska Peninsula Area state-waters Pacific cod season for jig gear. ADF&G will close the parallel season based on the department's ability to provide for an orderly fishery through assessment of effort, harvest rate, and remaining federal/parallel Pacific cod jig gear quota.

If the state-waters jig season opens prior to closure of the federal jig sector season, the South Alaska Peninsula state-waters jig season (0–3 nmi) will be prosecuted concurrent to the federal (3–200 nmi) WGOA jig sector Pacific cod season. Vessels that participate in the South Alaska Peninsula Area state-waters season will be subject to state fisheries regulations, and all Pacific cod harvested will be deducted from the South Alaska Peninsula Area state-waters jig gear GHIL allocation. Vessels that participate in the federal WGOA jig gear sector season will be subject to federal fisheries regulations, and all Pacific cod harvested will be deducted from the federal WGOA jig gear sector harvest allocation.

The South Alaska Peninsula Area state-waters Pacific cod season for jig gear will close when the South Alaska Peninsula Area Pacific cod jig gear GHIL allocation has been harvested. If the South Alaska Peninsula Area state-waters jig gear GHIL allocation has not been fully harvested by June 8, the state-waters jig gear season may close on June 8 based on inseason assessment of effort, harvest rate, and remaining state-waters jig quota to allow the WGOA federal/parallel Pacific cod jig gear sector B season to open on June 10. The state-waters season for jig gear will reopen after closure of the WGOA federal/parallel Pacific cod jig gear sector B season if the South Alaska Peninsula Area state-waters jig gear GHIL allocation has not been achieved. A summary of state-waters and parallel season dates is located in Appendix C1.

### **Concurrent Fisheries**

When the South Alaska Peninsula Area state-waters and WGOA federal Pacific cod seasons are open concurrently for the same gear type:

- vessels may not simultaneously participate in a South Alaska Peninsula Area state-waters season and any other Pacific cod season;

- vessel operators registered for a state-waters season must invalidate their ADF&G South Alaska Peninsula Area state-waters Pacific cod registration prior to participating in a federal Pacific cod season;
- vessel operators participating in a federal Pacific cod season must register with ADF&G prior to participating in the South Alaska Peninsula Area state-waters Pacific cod season;
- all Pacific cod must be delivered prior to validating or invalidating a South Alaska Peninsula Area state-waters Pacific cod registration; and
- vessel operators may validate or invalidate vessel registrations by contacting ADF&G in Kodiak (907-486-1840) during normal state business hours (Monday–Friday, 8 AM to 4:30 PM).

### **Weather Delay**

The state-waters season opening for pot and jig gear will be delayed 24 hours if the National Weather Service (NWS) marine forecast for Area 155 (Castle Cape to Cape Sarichef) issued at 4:00 AM on the scheduled opening date contains gale warnings for that day or the following day. If, after the initial weather delay, the following day’s 4:00 AM NWS marine forecast contains gale warnings for that day or the following day, the opening of the state-waters season will be delayed for an additional 24 hours. Weather delays may continue on a rolling 24-hour basis for 7 days beyond the initial opening date. After 7 days, the season will open regardless of the weather forecast.

### **GHL Rollover Provisions**

The South Alaska Peninsula Pacific cod management plan provides additional late season fishing opportunity when the GHL is not fully harvested. If state-waters GHL is available when the federal/parallel WGOA pot gear sector B season closes, the state-waters Pacific cod season may reopen to both pot and jig gear. If a substantial portion of the state-waters season GHL remains unharvested on or after October 30, gear limits, vessel size restrictions, and exclusive registration requirements may be removed to facilitate full harvest of the GHL. All actions regarding GHL rollover provisions will be announced by ADF&G news release.

### **VESSEL REGISTRATION REQUIREMENTS AND SIZE RESTRICTIONS**

The South Alaska Peninsula Area is an exclusive registration area for Pacific cod. Once a vessel is validly registered for the 2018 South Alaska Peninsula Area state-waters Pacific cod season, that vessel may not be used to take Pacific cod in any other exclusive or superexclusive state-waters Pacific cod management area during 2018. Conversely, a vessel validly registered for an exclusive or superexclusive state-waters Pacific cod season outside of the South Alaska Peninsula Area, may not participate in the 2018 South Alaska Peninsula Area state-waters Pacific cod season unless the South Alaska Peninsula Area is designated as a nonexclusive registration area on or after October 30. The South Alaska Peninsula Area exclusive registration requirements do not apply during a parallel Pacific cod fishery.

Pacific cod vessel registrations may be obtained in person at ADF&G offices in Kodiak and Dutch Harbor, or by fax or email. A 2018 Commercial Fisheries Entry Commission (CFEC) interim-use miscellaneous finfish permit card for the appropriate gear type must be obtained prior to registration. CFEC and other fishery related contact information is provided in Appendix A1.

Tender vessel operators must obtain a tender vessel registration for the state-waters Pacific cod fishery. Tender operators may target Pacific cod with either pot or jig gear while operating as a tender vessel. Separate fish tickets must be completed for fish landed by the tender vessel and for fish taken from other fishing vessels.

Pacific cod may not be taken by vessels greater than 58 feet in overall length during the South Alaska Peninsula Area state-waters Pacific cod fishery unless the vessel size restriction is removed by ADF&G on or after October 30.

## **LEGAL GEAR, GEAR LIMITS, AND POT BUOY TAGS**

Pot, mechanical jigging machine, and hand troll gear are the only legal gear types during the state-waters Pacific cod season. Vessels may not use pot and jig gear at the same time; however, vessel operators may change gear registration by contacting the Kodiak ADF&G office (Appendix A1).

During the state-waters season, groundfish pots of any size may be used to take Pacific cod, although individual tunnel eye openings on pot gear must be 36 inches in perimeter or less. All pots must be equipped with a biodegradable escape mechanism (5 AAC 39.145). The biodegradable escape mechanism is an opening 18 inches or greater in length placed within 6 inches of the bottom of the pot and secured closed by a single length of untreated, 100% cotton twine no larger than 30 thread count. No more than 60 groundfish pots may be operated from a vessel unless the pot limit has been rescinded by ADF&G emergency order on or after October 30.

Buoy tags are required for pot gear when the 60-pot limit is in effect. Tags must be placed on the main or trailer buoy and are available at ADF&G offices in Kodiak and Dutch Harbor for \$1.50 per tag. Tags may be mailed through the U.S. Postal Service if paid for prior to shipment. Buoy tags may also be seasonally available at local processors in Sand Point, King Cove, and False Pass. A valid 2018 miscellaneous finfish CFEC permit card for pot gear is required to receive tags. Contact ADF&G in Kodiak at 907-486-1840 for additional information on buoy tags.

If buoy tags are lost during the season, replacement tags may be obtained by contacting ADF&G in Kodiak or Dutch Harbor. The vessel owner, operator, or agent must complete and submit an affidavit form to ADF&G describing how tags were lost and the location and unique number(s) of each lost tag. Pots with lost tags may remain in the water but those pots must be secured open with bait and bait containers removed until replacement tags are attached.

Vessels using mechanical jigging machines are restricted to using no more than 5 machines unless the gear limit has been rescinded by ADF&G on or after October 30. Each of the 5 permissible lines may have no more than 30 hooks. There are no limits on the amount of hand troll gear that may be operated from a vessel. Vessels may operate both hand troll and mechanical jigging gear at the same time; however, separate CFEC permit cards and fish tickets are required for each gear type at the time of landing.

## **POT BUOY MARKING REQUIREMENTS**

Buoys attached to groundfish pots must be marked with the permanent ADF&G vessel number of the vessel operating that gear (5 AAC 28.050 and 5 AAC 28.570(e)). The buoy containing the 5-digit ADF&G number may not be marked with any additional numbers; however, symbols and

letters are acceptable. Trailer buoys used to mark ownership or string sequence may be marked with any desired numbers, symbols, or letters.

## **POT STORAGE AND GEAR CONFIGURATION**

All pot gear must be open and unbaited at the time of a parallel or state-waters season closure. Open and unbaited pots may be stored at any depth for a maximum of 7 days following the closure date. After 7 days, pots must be removed from the water or stored open and unbaited in waters 25 fathoms or less.

If the time period between closure of the WGOA federal/parallel Pacific cod pot gear sector A season and the start of the South Alaska Peninsula Area state-waters pot gear season is more than 7 days, all pot gear inside state waters (0–3 nmi) must be placed into legal storage (25 fathoms or less). However, during the 7 days immediately prior to the South Alaska Peninsula state-waters season opening, open and unbaited pot gear may be stored on the fishing grounds (greater than 25 fathoms).

When the state-waters season opens, the 60-pot limit is in effect. During the 7 days after the state-waters season opens, a vessel may store or transport pots in excess of the 60-pot limit only if those pots are stored open and unbaited in waters 25 fathoms or less or being transported onboard a vessel. After the 7-day period, registered vessels may not operate more than the maximum allowable 60 pots for the remainder of the state-waters season. Following closure of the state-waters season vessel operators may not stack out or move gear into storage while Pacific cod is on board the vessel (5 AAC 28.070(c)(1)).

Contact NMFS Enforcement (Appendix A1) regarding gear storage in federal waters.

## **LANDING REQUIREMENTS**

Vessels participating in the state-waters Pacific cod season are required to deliver their catch within 48 hours after a closure unless 1) cod were harvested as allowable bycatch in another directed fishery, or 2) the vessel is delayed due to extraordinary circumstances and the vessel operator has contacted an ADF&G representative within 48 hours following the closure and has been granted additional time to reach the port of landing (5 AAC 28.581).

## **BYCATCH**

In state waters (0–3 nmi), ADF&G adopts the NMFS maximum retainable bycatch percentages applicable in federal waters (3–200 nmi) for groundfish species that are not actively managed by the State of Alaska. Federal retainable bycatch status is subject to change and may differ between species. Updated retainable bycatch status for federally managed species are announced via information bulletins on the NMFS Alaska Region website at <https://alaskafisheries.noaa.gov/infobulletins/search> or contact NMFS Enforcement in Kodiak for current bycatch percentages and status (Appendix A1).

Unless otherwise specified, the maximum bycatch limit for any species of groundfish is 20% by weight of the targeted Pacific cod onboard a vessel. During a state-waters or parallel Pacific cod fishery, octopus may only be retained as bycatch up to 20% by weight of Pacific cod onboard the vessel and must be landed on the miscellaneous finfish card used to deliver Pacific cod (5 AAC 38.417). Black rockfish *Sebastes melanops* may be retained up to 5% by weight of Pacific cod onboard a vessel. Jig vessels concurrently registered for a South Alaska Peninsula Area Pacific

cod season and the South Alaska Peninsula Area directed black rockfish season may retain black rockfish in excess of the 5% bycatch limit when the South Alaska Peninsula Area directed black rockfish season is open to commercial fishing. Contact the ADF&G office in Kodiak (907-486-1840) regarding retainable bycatch percentages for state managed species.

## **CONCURRENT GROUND FISH FISHERIES**

Vessels may register to simultaneously participate in the South Alaska Peninsula Area state-waters Pacific cod season and the federally managed walleye pollock fishery in waters between long 170° W and Castle Cape (long 158° 20' W). Vessels actively participating in the South Alaska Peninsula state-waters Pacific cod fishery may leave baited pot gear on the fishing grounds while trawling for walleye pollock. However, those vessels must contact ADF&G staff in Kodiak prior to exiting or re-entering the South Alaska Peninsula state-waters Pacific cod fishery. Vessel operators are reminded that all state-waters Pacific cod delivery and gear storage requirements apply in the event the state-waters Pacific cod season closes while vessels are targeting walleye pollock. Vessels intending to participate in groundfish fisheries outside of waters between long 170° W and Castle Cape must first invalidate their South Alaska Peninsula Area state-waters Pacific cod registration and legally store all pot gear (5 AAC 28.556(f)).

## **CATCH REPORTING**

ADF&G will manage the South Alaska Peninsula Area state-waters Pacific cod pot season using inseason catch reports provided by vessel operators. By regulation, vessel operators using pot gear must report daily the harvest location, number of pot lifts, and pounds of Pacific cod retained in the previous 24-hour period (midnight to midnight). Inseason catch reports allow ADF&G to consider how changes in effort, fleet behavior, tides, and weather influence harvest rates. Catch reports will be taken by satellite dispatch (7894), phone (907-486-1840), or email ([natura.richardson@alaska.gov](mailto:natura.richardson@alaska.gov)). Reporting worksheets will be issued to vessel operators during registration (Appendix B1).

Reports taken by satellite dispatch will occur between 9:00 AM and 10:00 AM daily.

## **INSEASON ANNOUNCEMENTS**

All actions pertaining to regulatory changes in the state-waters season will be communicated to the fleet by satellite dispatch, distributed via the ADF&G news release email subscription service (<http://www.adfg.alaska.gov/index.cfm?adfg=cfnews.main>), and relayed through participating processors and National Weather Service marine weather VHF forecasts when possible. ADF&G will make every effort to provide sufficient advance notice prior to a closure; however, the potential exists for a short advance notice closure.

A weekly harvest update will be distributed each Monday after 4:00 PM while the state-waters season is open. Weekly harvest updates are available on the ADF&G website at: <http://www.adfg.alaska.gov/index.cfm?adfg=commercialbyareaakpeninsula.groundfish#harvest> or from the ADF&G groundfish management office in Kodiak.



## **FIGURES**

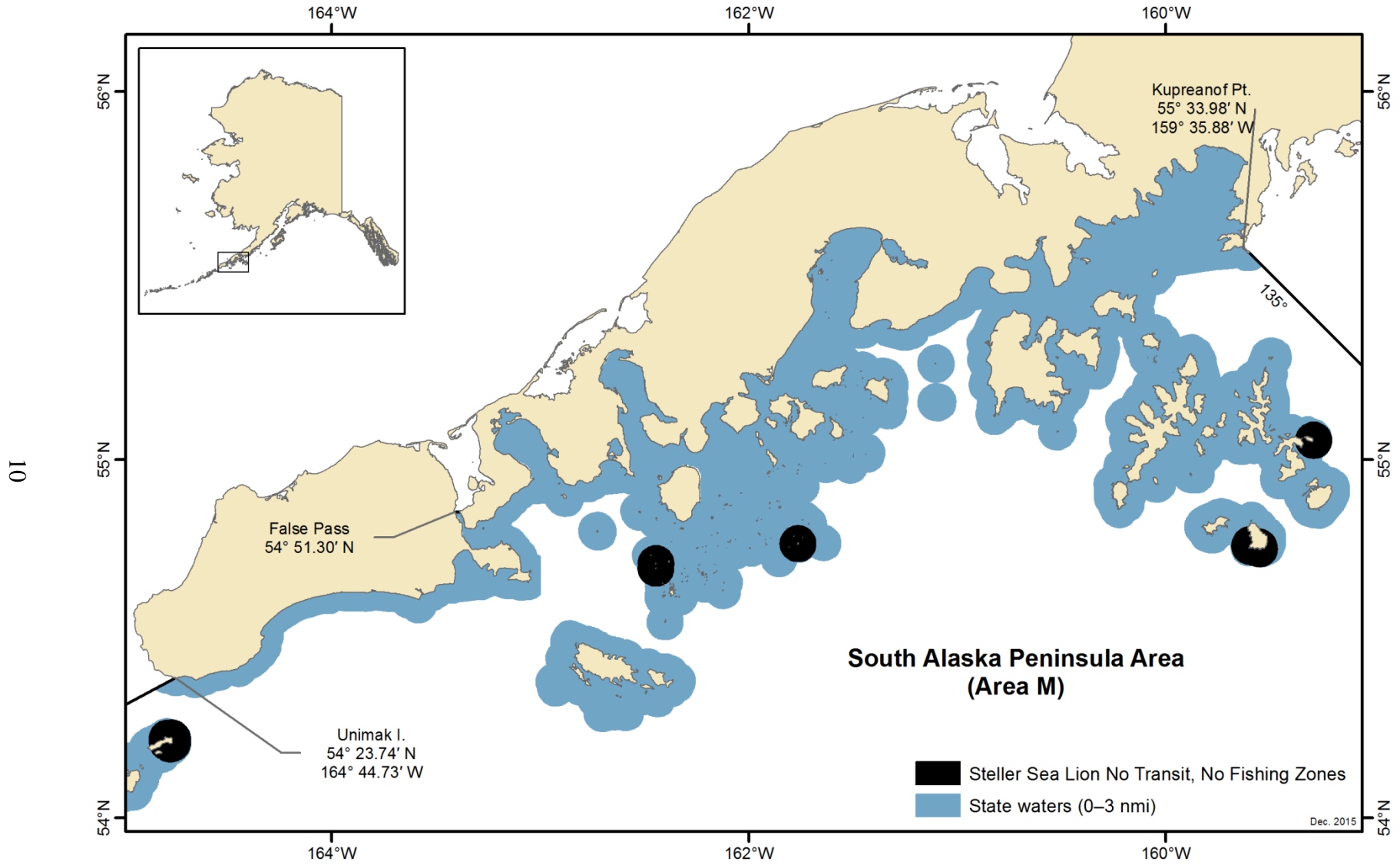


Figure 1.—South Alaska Peninsula Area for state-waters Pacific cod from Kupreanof Point to Unimak Island.



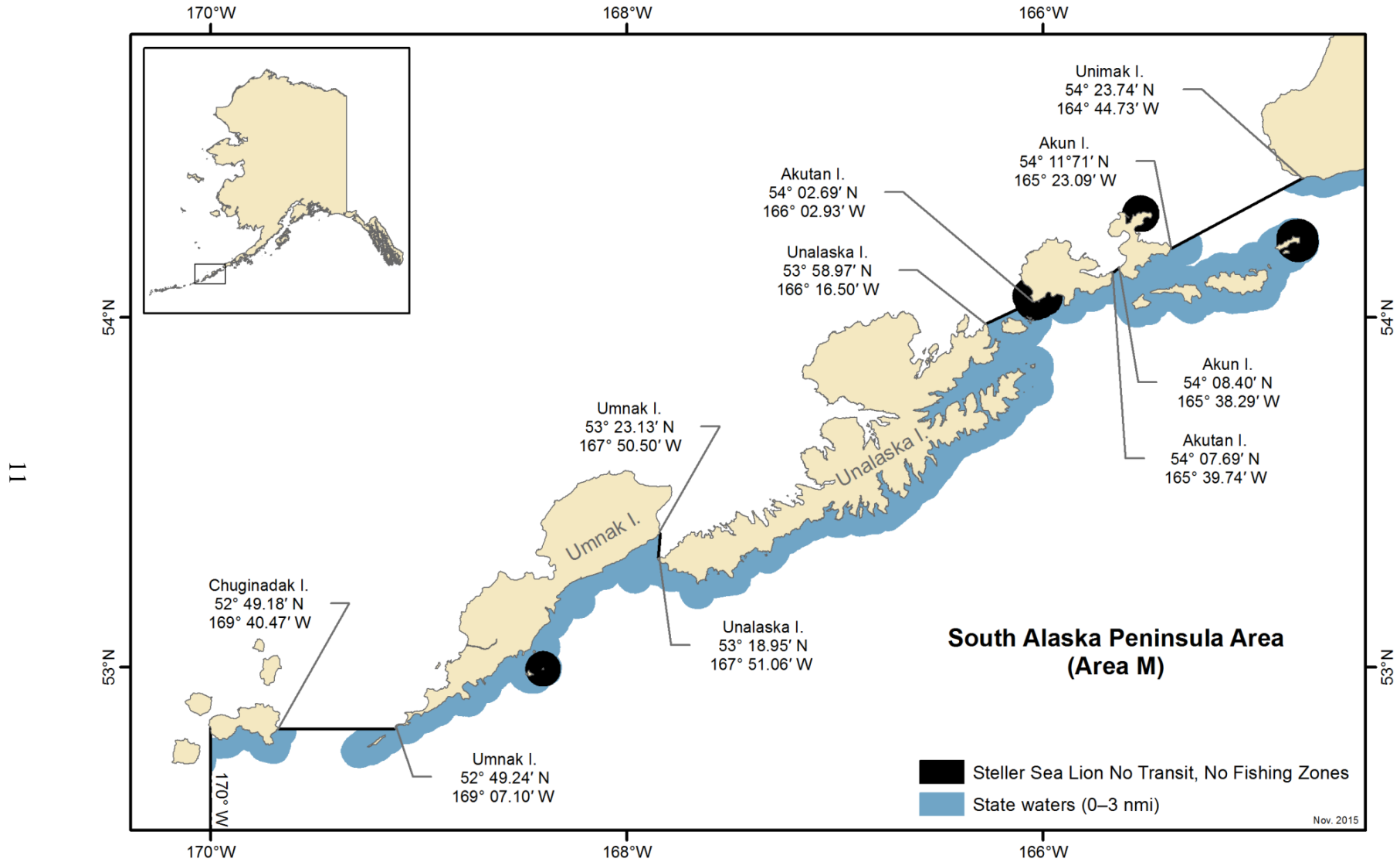


Figure 2.—South Alaska Peninsula Area for state-waters Pacific cod from Unimak Island to long 170° W.

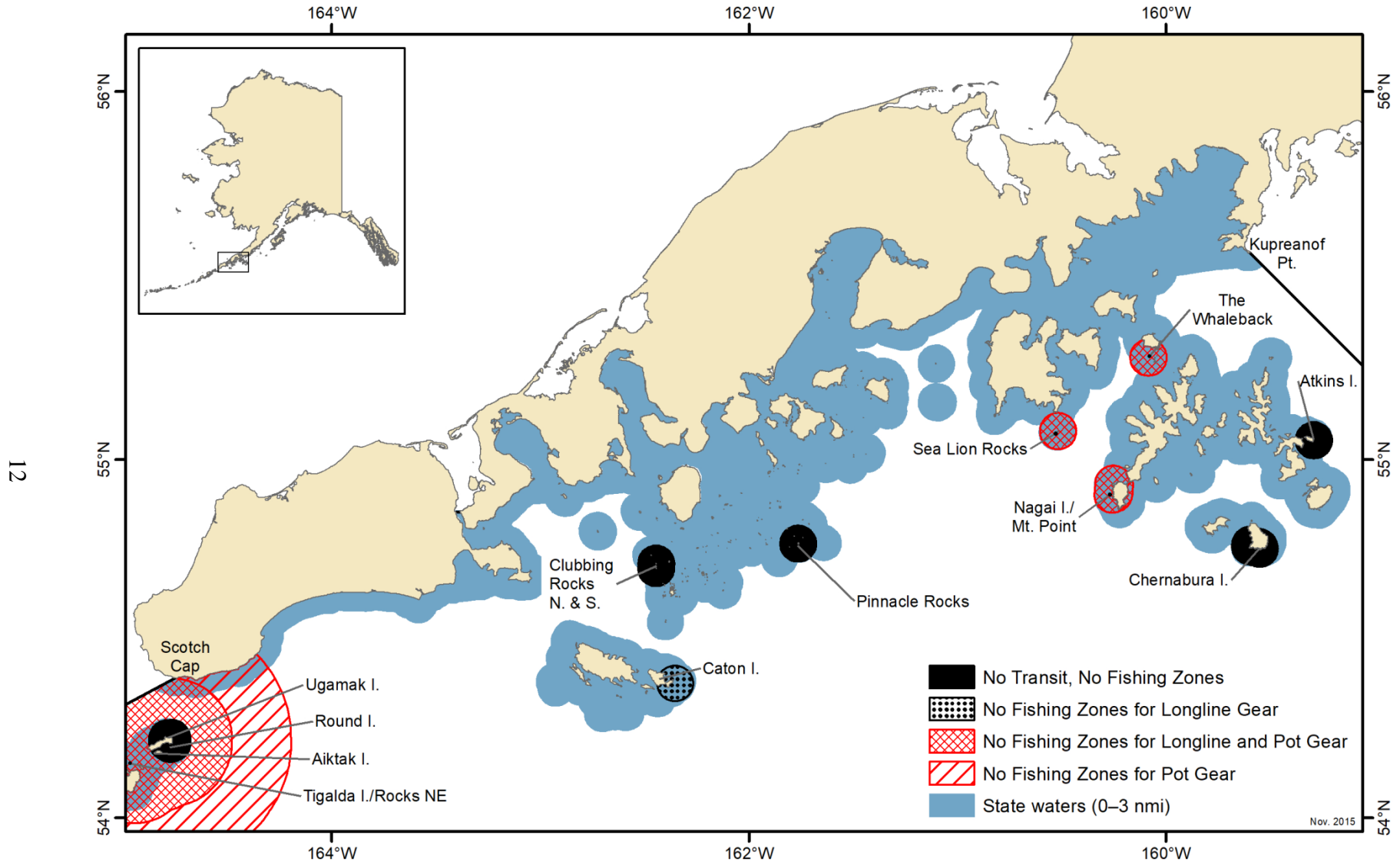


Figure 3.—Steller sea lion restrictions for pot and longline gear during the parallel Pacific cod fishery in the South Alaska Peninsula Area, Kupreanof Point to Scotch Cap.

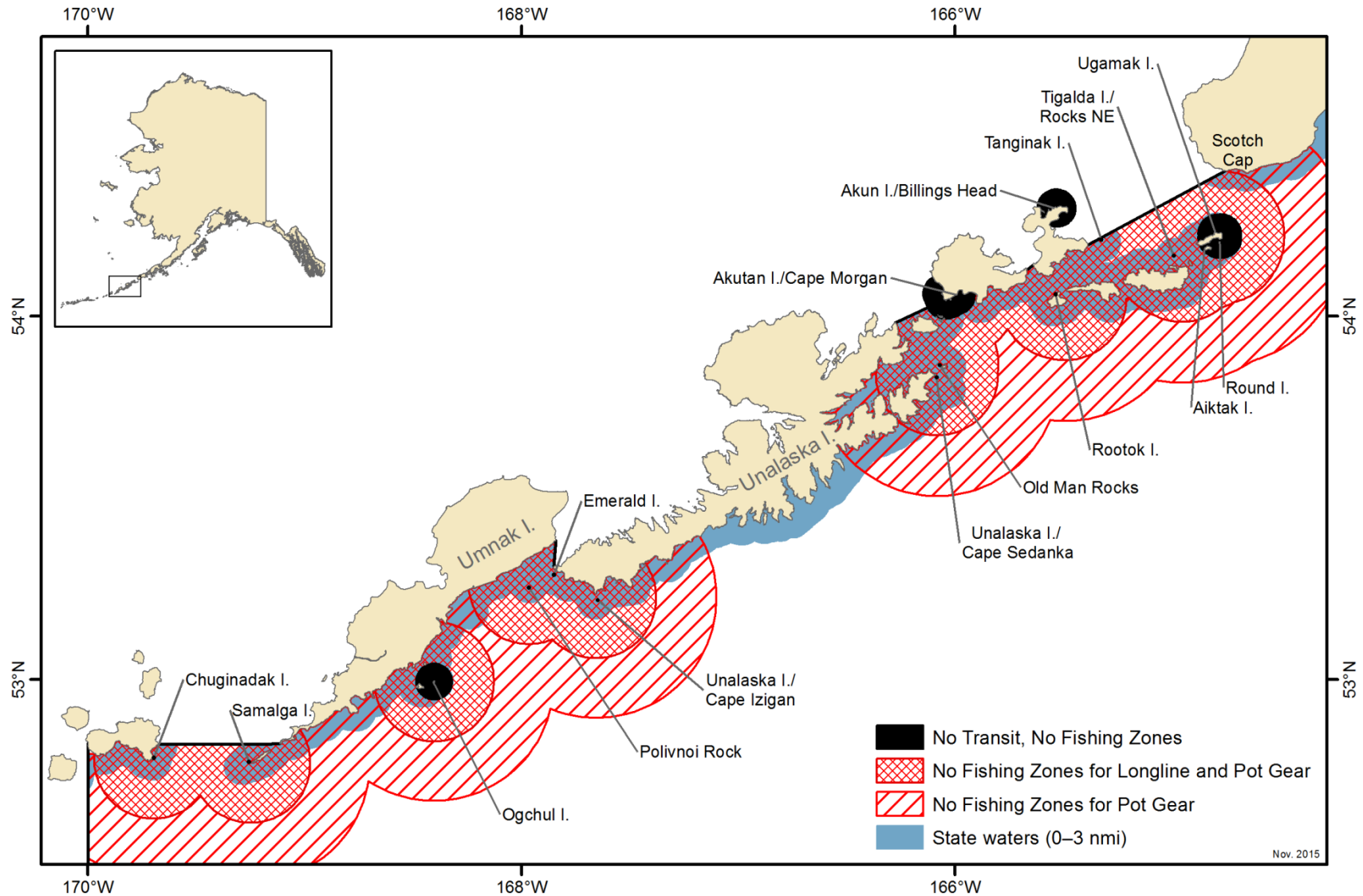


Figure 4.—Steller sea lion restrictions for pot and longline gear during the parallel Pacific cod fishery in the South Alaska Peninsula Area, Scotch Cap to long 170° W.



**APPENDIX A. LIST OF FISHERY CONTACTS BY AREA  
AND LOCATION**

Appendix A1.–List of fishery contacts by agency and location.

---

**ALASKA DEPARTMENT OF FISH AND GAME** website: <http://www.adfg.alaska.gov/index.cfm?adfg=fishingCommercialByArea.southwest>

**Kodiak Office**

Mail address: 351 Research Court Physical address: 351 Research Court Phone: (907) 486-1840  
Kodiak, Alaska 99615 2nd floor, Kodiak, Alaska Record-a-phone: (907) 486-4559  
Fax: (907) 486-1824

Mark Stichert Westward Region Shellfish/Groundfish Management Coordinator [mark.stichert@alaska.gov](mailto:mark.stichert@alaska.gov)  
Nathaniel Nichols Kodiak, Chignik, Alaska Peninsula Area Shellfish/Groundfish Biologist [nathaniel.nichols@alaska.gov](mailto:nathaniel.nichols@alaska.gov)  
Natura Richardson Kodiak, Chignik, Alaska Peninsula Assistant Area Shellfish/Groundfish Biologist [natura.richardson@alaska.gov](mailto:natura.richardson@alaska.gov)

**Dutch Harbor Office**

Mail address: P.O. Box 920587 Physical address: F.T.S. building, 2nd floor Phone: (907) 581-1239  
Dutch Harbor, Alaska 99692 Airport Beach Road, Dutch Harbor Fax: (907) 581-1572

**DIVISION OF ALASKA WILDLIFE TROOPERS**

website: <http://www.dps.state.ak.us/AWT/>

**Kodiak Office**

Mail address: 2921 A Mill Bay Road Physical address: 2921 A Mill Bay Road Phone: (907) 486-4762  
Kodiak, Alaska 99615 Kodiak, Alaska Fax: (907) 486-5480  
Shane Nicholson Sergeant [larry.nicholson@alaska.gov](mailto:larry.nicholson@alaska.gov)

**COMMERCIAL FISHERIES ENTRY COMMISSION**

website: <http://www.cfec.state.ak.us/>

Mail address: P.O. Box 110302 Physical address: 8800 Glacier Highway #109 Phone: (907) 789-6150  
Juneau, Alaska 99811-0302 Juneau, Alaska Fax: (907) 789-6170

**NATIONAL MARINE FISHERIES SERVICE - ALASKA REGION**

website: <http://www.alaskafisheries.noaa.gov/>

**Sustainable Fisheries Division**

Juneau Office Phone: (800) 304-4846 #3  
Dutch Harbor Office Phone: (907) 581-2062

**NOAA Fisheries Enforcement**

Dutch Harbor Office Phone: (907) 581-2061  
Kodiak Office Phone: (907) 486-3298

**NOAA Observer Program**

Phone: (206) 526-4795

---

## **APPENDIX B. EXAMPLE OF REPORTING WORKSHEET**





**APPENDIX C. SUMMARY OF DATES AND  
STATE-WATERS GUIDELINE HARVEST LEVELS**

Appendix C1.–Summary of Kodiak, Chignik, and South Alaska Peninsula parallel and state-waters Pacific cod season dates and state-waters guideline harvest levels by gear type.

Pacific Cod Season Opening Dates	Kodiak		Chignik		South Alaska Peninsula	
	Pot	Jig	Pot	Jig	Pot	Jig
<b>Federal/Parallel A Season</b>	January 1	January 1	January 1	January 1	January 1	January 1
<b>State-Waters Season</b>	7 days after Federal CGOA pot A Season	48 hours after Federal CGOA jig A Season <sup>a</sup>	March 1 or seven days after closure of CGOA pot A Season, whichever is later	March 15	March 7 or seven days after closure of WGOA pot A Season, whichever is later	48 hours after Federal WGOA jig A Season <sup>b</sup>
<b>Federal/Parallel B Season</b>	September 1	June 10	September 1	June 10	September 1	June 10
<b>State-Waters GHL Rollover</b>	Following Federal CGOA pot B Season	Following Federal CGOA pot B Season	August 15	August 15	Following Federal WGOA pot B Season	Following Federal WGOA pot B Season
<b>State-Waters GHL</b>	<b>2,237,118 (whole pounds)</b>		<b>1,565,982 (whole pounds)</b>		<b>5,345,273 (whole pounds)</b>	
<b>GHL By Gear Type</b>	1,118,559 (50%)	1,118,559 (50%)	1,409,384 (90%)	156,598 (10%)	4,543,482 (85%)	801,791 (15%)

Notes: CGOA = Federal Central Gulf of Alaska Management Area; WGOA = Federal Western Gulf of Alaska Management Area

<sup>a</sup> If the CGOA federal/parallel A-season jig sector harvest allocation has not been achieved by March 15, the parallel (0–3 nmi) jig gear sector A season may close and the Kodiak Area state-waters season for jig gear may open on March 15 or later depending on ADF&G’s ability to provide for orderly fisheries based on inseason assessment of effort, harvest rate, or remaining federal jig quota.

<sup>b</sup> If the WGOA federal/parallel A-season jig sector harvest allocation has not been achieved by March 15, the parallel (0–3 nmi) jig gear sector A season may close and the South Alaska Peninsula Area state-waters season for jig gear may open on March 15 or later depending on ADF&G’s ability to provide for orderly fisheries based on inseason assessment of effort, harvest rate, or remaining federal jig quota.

**This document is for general information purposes only; it is not intended to be a complete list of fishery regulations, nor does it replace or supersede existing regulations. Vessel owners and operators are responsible for understanding all state and federal regulations. For additional information, contact ADF&G in Kodiak at (907) 486-1840 or NMFS Sustainable Fisheries Division at (800) 304-4846 #3.**