

BRISTOL BAY DATA REPORT NO. 51

SM  
222  
AA  
DIF  
no. 51

Bristol Bay Annual Staff Meeting  
King Salmon, Alaska  
February 18-21, 1975

by:  
Bristol Bay Staff Members

Alaska Department of Fish and Game  
Division of Commercial Fisheries  
Anchorage, Alaska

March 13, 1975

**ARLIS**  
Alaska Resources Library & Information Services  
Library Building, Suite 111  
3211 Providence Drive  
Anchorage, AK 99508-4614

TABLE OF CONTENTS

	<u>Page</u>
I. Introduction . . . . .	1
II. Game Division . . . . .	1,2
III. Division of Fish and Wildlife Protection . . . . .	2,3
IV. Sport Fish Division . . . . .	3,4
V. F.R.E.D. Division . . . . .	4
VI. Management Staff Duties/Responsibilities and Line of Authority . . . . .	4
VII. On-Going Management - Research Field Programs. . . . .	4-7
VIII. Temporary Hiring . . . . .	8
IX. F.Y. Budgets . . . . .	8
X. Field Camp and Headquarters Status . . . . .	8,9
XI. Report Assignments, Status of . . . . .	9
XII. Special Topics . . . . .	9,10
XIII. New Program Ideas . . . . .	10
XIV. Staff Duty Assignments . . . . .	10,11
XV. Inter-Agency Coordinating Needs . . . . .	11
XVI. Critique . . . . .	11
Table 1 . . . . .	12
Figure 1 . . . . .	13
Table I . . . . .	14

3 3755 001 04143 3

1975  
1976  
1977  
1978  
1979  
1980  
1981  
1982  
1983  
1984  
1985  
1986  
1987  
1988  
1989  
1990  
1991  
1992  
1993  
1994  
1995  
1996  
1997  
1998  
1999  
2000  
2001  
2002  
2003  
2004  
2005  
2006  
2007  
2008  
2009  
2010  
2011  
2012  
2013  
2014  
2015  
2016  
2017  
2018  
2019  
2020  
2021  
2022  
2023  
2024  
2025

BRISTOL BAY ANNUAL STAFF MEETING  
KING SALMON, ALASKA  
FEBRUARY 18-21, 1975

Staff in Attendance: Mike Nelson, Don Bill, Jeff Skrade, Richard Randall, Paul Krasnowski, Ken Parker, Bob Paulus, Ken Middleton, Merle Tuck.  
Sport Fish Division: Russ Redick, Lou Gwartney, Dick Russell  
Game Division: Ken Pitcher, Don Calkins, Nick Steen  
F.R.E.D.: Harold Heinkel, Rick Johnson  
Protection Division: Joe Brantley, Don Kauger

I. INTRODUCTION

History: 11th annual staff meeting. First meeting held prior to season in 1965 in King Salmon. Has provided good communications tool between area offices and between management and research staff and formalizing staff assignments.

A. Regional and Division reorganization (Middleton)

A schematic of proposed regional organization presented with existing and proposed new positions included. Chain of command would allow direct in-season communication between area biologists and regional supervisor. Differences in basic organization of various regions may be retained in final scheme. Request for a regional administrative officer may meet stiff opposition. Demands from F.R.E.D., OCS, and Habitat related matters suggesting need for additional positions to handle them. Existing research staff must make the decision of whether to conduct operations of pure investigations research demanded by impending rehabilitation programs.

B. Limited Entry Program (Nelson)

41 page instruction booklet presented as guide to fishermen in filling out permit applications. Discussed workshop held in Dillingham on Dec. 3, 1974 with Cleone Compton and Roy Pastorini from Entry Commission. Don Bill, Mike Nelson, and Tom Schroeder attended. BBNC received \$10,000 for six regional coordinators to tour the villages and assist applicants. General attitude toward Limited Entry good except in Togiak. Interim permits will now be required for herring fishermen in 1975.

II. GAME DIVISION

A. C.F. operational plans for 1975 will include use of possibly six (6) beluga repelling units: 1- Nushagak; 1- Iguahik; 2- Kvichak; 1- Naknek; and 1- Egegik. Temporary employees required for Nurhagak (1 temp.) and Kvichak (2 temporaries). Units in Igushik, Naknek, and Egegik will be contracted out to private parties. Will require transducer protector units built prior to season. Attempt to install units at lowest water of the month. Most deployment problems will be in Kvichak River on south bank. Considered possibility of utilizing buoys or rubber raft for housing of electronics

out in the river. Al Menin reports buoy costs prohibitive and not readily accessible.

Ken Pitcher: Presented overview of historical beluga work conducted in Bristol since mid 1950's. Estimates have put beluga population at as high as 1000 in Bristol Bay divided mainly between Kvichak and Nushagak Rivers. Based on consumption rates of 780 smolt/animal/day for an 18 day peak period total smolt predation would be in excess of two million smolt on the Kvichak River alone. Up to 200,000 adults may be consumed by belugas in Kvichak Bay with over 100,000 in Nushagak Bay.

1975 Operational Plans: Hope to acquire collecting permit for up to 40 animals. Don Calkins from Anchorage will assist in operation. Funds include \$15,000 and have harpoon gun available. Procedure would include collection of half of the animals that have been prevented from entering mouth of the rivers and compass the contents of stomachs with those from beluga allowed to ascend the rivers to feed. Main problem will be in quantifying actual effects of beluga repelling gear as it relates to observed differences in stomach contents. Possibilities for native whale hunters include Charlie Wilson of Levelock and Joe Clark of Clarks Pt.

B. Marine Mammals Act

Will probably be no seal hunting allowed in 1975. Fishermen will require "Certificate of Inclusion" to kill seals caught in commercial fishing gear. Three fulltime staff biologists involved in Marine mammals at present time.

C. Beaver Situation in Bay (Nick Steen)

Beaver harvest inversely proportional to salmon harvest. Reduction in abundance of beavers in Unit 17 has necessitated closure of lower reaches of Nushagak River and drainages. Harvests have included up to 20% kits in recent years. Aerial and float surveys for active caches indicate a decline also. Faro striving for an active beaver lodge/mile of stream.

D. Future Housing Needs in King Salmon

Faro will not be out of trailer until September at the earliest. Steen will still occupy C.F. trailer for entire summer season. No immediate prospects for new game positions in Bristol Bay.

III. DIVISION OF FISH AND WILDLIFE PROTECTION (Joe Brautley)

A. Enforcement Plan for 1975

Have requested the use of a 65' boat for use as base of protection operations. In addition hope to have two 21' patrol boats with operator and officer on board. Possibility of temporary employees for stakeouts.

N/K and Nush districts: Move 65' boat and support boats where needed most depending on season openings.

Egegik District: Base crew at APA cannery and have pursuit boats available. Possibly use 2 - 17' C.F. whalers now on now on Becharof - Ugashik program. Current reorganization of protection Division may change priorities.

B. Subsistence Fishery Monitoring and other Problem Areas

New regulation permitting two weekly subsistence periods in Naknek, Egigik, and Ugashik Rivers will pose special problems if are to keep fish from being sold with commercial catches. May have to require clipping of dorsal fin on all subsistence caught fish to help identify fish and deter sale into commercial market. Togiak commercial season to receive special attention and hope to have boat chartered for patrol work there by late June.

IV. SPORT FISH DIVISION (Lou Gwartney, Dick Russell)

A. Wood River Char Study

1975 Operation will include cooperative efforts of S.F. & C.F. Divisions each conducting separate projects on various aspects of Wood River char. Combined package of about \$75,000. Will include use of U. of A. graduate students to conduct relevant research.

Sport Fish Involvement: One graduate student being involved with pike studies. Concentrate on two isolated populations on Aleknagik Lake to include movements, age composition, growth rates, and relationship to sockeye parasites. Primarily life history approach and will cover two years.

Creel Census on Agulowak River, Agulukpak River, and in Tikchik system. Use two temporaries and lease local cabins for base of operations.

Comm. Fish Involvement: Propose providing supervision and support for two graduate students and two temporaries. Attempt 1) Estimates of char population size and basic predator-prey relationship between char and smolt; consumption rates and 2) Testing and evaluating of various char suppression techniques to include sonic gear, use of impoundments, etc. Initial work to be done at Little Togiak Lake outlet with possibility of later moving to Agulowek River.

Sport Fish staff criticizes C.F. proposal as being to ambitious and comprehensive. Question ability to estimate size of the char population size because it is not well isolated. Insist can't determine consumption rates in the field. C.F. staff maintains efforts are for development of techniques and absolute population estimate not our goal but would require confidence limits.

Agreement that goal should be more specific and less comprehensive. Probably limit work to evaluation of char suppression techniques and basic life history studies.

B. Office Relocation

Agreement was reached to permit King Salmon S.F. staff to use old research office in exchange for their old office and responsibility to pay additional 7% in complex costs (S.F. presently 8% and C.F. 56.5%). C.F. research staff will now occupy old C.F. management office and management will move to existing library room. Old S.F. office to become library scale reading room.

- C. Future Staffing, Housing Needs, Etc.  
See new S.F. positions for K.S. or B.B. in near future.

V. F.R.E.D. DIVISION (Harold Heinkel, Rick Johnson)

- A. 1974 Field Season Summary  
Conducted smolt out migration work at lake outlet. Wier installation and escapement enumeration. Tagging of escaping adults indicates no time segregation of lake and creek spawners. Experimentation with holding and ripening of adults. Took some eggs for incubation in mock up model of proposed system. Stickleback trapping on small systems with tributary ponds. Detailed report due out in spring of 1975.
- B. 1974-75 Winter Program  
Collect baseline hydrological data from streams, and limnological data from lake. Gillnetting and tagging char through the ice. Maintaining egg incubation boxes.
- C. 1975 Operational Plan  
Not finalized yet but will include monitoring of East Creek fry emergence and from incubation box. Plan to hold and feed fry. Try to collect smolt samples before ice goes out. Experiment with mock-up of sonar ride scanner to test feasibility of use as breakup occurs. Escapement studies with holding of adults at outlet and two creek inlets for egg takes.
- D. Scheduling For Shake Lake Complex  
Plan expansion of gravel pad in 1975 with possible construction of site and lining quarters up away from the lake. Will probably not involve any sizeable egg take in 1975. Rick Johnson to live at Snake Lake and Harold Heinkel to live in Dillingham.

INTERNAL MECHANICS

VI. MANAGEMENT STAFF DUTIES/RESPONSIBILITIES AND LINE OF AUTHORITY (Nelson)

Discussed most likely staff responsibilities with recent realignment of area biologist. A tentative outline of major programs and assignments for upcoming season was agreed on at this time. See Table 1. Each staff member was given a job of updating P402's and submitting to Nelson before March 20. Randall will furnish copies of class specifications to both DLG and AKN. Randall will be promoted in April to fill vacant Anchorage FB III position. Vacant FB II position will then be recruited. Anchorage based staff expressed need for temporary housing in AKN during season. General responsibilities and duties with proposed diagram of line of authority is included in Table 2 and Figure 1.

VII. ON-GOING MANAGEMENT - RESEARCH FIELD PROGRAMS

- A. Commercial Catch
  - 1. Number of plants operating:  
Togiak District - Togiak Fisheries purchased by Japanese (Jack Most, president). Questionable whether Kachomak Seafoods can afford to operate.

Nushagak District: Peter Pan, A.P.A., C.W.F., Trace, Queen Fisheries, cold storage plant will probably not operate.

Naknek-Kvichak District: Bumble Bee, Nelbro, Peter Pan, Red Salmon, Whitney Fidalgo, A.P.A., Alaska Far East, Kenai Packers, Nefco.

Egegik District: Kayak Packing Co., Jack McMahon, Fred Grindle, NEFCO, A.P.A. (possibly purchased by local native association), C.W.F., W. A. Peterson.

Ugashik District: A.P.A., Peter Hansen, Briggs Way. Herring fishery: Alaska Far East (M/V CB I), Cheyuk Co. (Jay McCormick, C.W.F. (Dkuk), Fred Grindle, Alfred Ivanof.

Possibility of strike this year since companies actually requesting a reduction in fish prices.

2. Catch Sampling:

Togiak: Sampler stationed at Togiak Fisheries. Will sample all species.

Nushagak: Sampling for all species except cohos.

N/K: Operate out of King Salmon HQ and concentrate on sockeyes and chums.

Egegik: Sample sockeyes.

Will attempt to get 300 weights from peak of catch. Also try to collect escapement.

B. Escapement

1. The pros and cons of lake sampling were discussed. If samples are taken in the lake they are to be noted as such. Some question as to whether lake samples reflect that of daily passage composition.
2. IHN x-ray - no formal requests made yet.
3. Duties - King Salmon will be Anchorage FB II, Dillingham will be Mike and Jeff, and escapement will be Jeff and R. B.
4. Herring - probably no samples unless have time and are available. Mike will aerial survey.

C. Smolting

1. 100 fresh samples (frozen) from each river during peak for Fred Utter. Ken or Paul will transmit.
2. Kvichak - Rich will be in charge this year with Anchorage FB II taking over after. Calibration not planned. Index will probably be run during index hours only except during peak outmigration (24 hours). Will try to seine samples. Will gradually move in to new school complex.
3. Naknek - same as previous years except an aperture counter may be experimented with the index site.
4. Ugashik - In 1973 a Bendix smolt counter went in. Last year's (1974) sonar proved to be accurate in hour by hour counts.

Net avoidance may still be a problem. Tom Schroeder will come over for a couple of days from Homer.

5. Wood River - There will be no combination of smolt and tower crews. Gear will be installed in slack water. May 19 is tentative starting date. No calibration or fyke nets. Sampling by beach seine at Mosquito Pt. This is the deepest water sonar yet. Fluctuating water level and velocity and the bottom type may prove to be problems. All migration takes place in the upper part of the water column. There is no chance of in-season daily outmigration without side scanner information. A logistics support man will be stationed in Dillingham and then transfer to King Salmon in June. Paul will run the program in 1975, research and management in 1976, and Jeff will probably take over in 1977.

#### D. Test Fishing

1. Offshore - Bid on Pt. Moller charter is out and opened effective 2/21/75. We discussed the possibility of using purse seine gear but will need to know more about operations in rough weather, etc. Pt. Moller is set up to take fish, supply gas and oil, etc. The new gill net gear is ready to go. Randall to do operational plans.
2. Outside - May have to go out on bid. New contracts call for \$300/trip on a 24-hour trip, \$150/trip on a 12-hour trip, and a straight \$1.50/fish. A 24-hour trip will be when vessel goes out on one tide, fishes through next tide, and comes back in on the flood of following tide. A 12-hour trip will be when vessel goes out and back on same tide or fishes until next high tide on next tide. Egegik may be a problem as we have numerous letters from interested fishermen. We will try to continue with the same people. East side will be run by Rich and west side by Mike.
3. Inside - Buoy placement on the east side will be handled by Rich. We will get the full price of fish minus 15% delivery charge. Company will provide boat, nets, maintenance, etc. May try A.P.A. or NEFCO at Egegik. The inside test will eventually be run by Brand X, but Rich this year. The side scanner may be experimented with on Egegik inside.

#### E. Beluga Predation Control

Will get four long battery boxes, but hereafter order only short batteries. Naknek will be operated out of King Salmon office. Egegik will need contract for about four weeks. Kvichak will need at least one box built and will operate from both sides. Contracts will call for \$300 flat rate with the contractor providing his own generating system. May purchase a rubber raft for next year. Need to purchase splicing material for cables.



F. Becharof/Ugashik Inventory

\$220,000 available in July 1974 for carrying capacity study on Becharof, Ugashik, and Igushik. Quite a bit accomplished last year despite late start, troubles, etc. Commend Ken on a job well done.

Accomplishments last summer and fall included: One round of plankton studies on all lakes, Igushik tow netting completed, stream surveys on Becharof and Ugashik completed, aerial surveys of same completed, some tow netting on Becharof and Ugashik, some physical work completed on B/U, and a lot of field facilities work. M/V Iliaska, when operational, helped immensely. Louie Barton provided much help. Need \$6,000 for spring operation - fry distribution. Two whalers and three 70's will be transferred to char program. Will drop Igushik study and probably fly around unless we get enough supplemental funds and requested FB II is funded for continuing studies.

G. Surveys

1. Subsistence - Jeff and R. B. will make rounds in the spring. Mike requests input on subsistence limits and he will take care of news releases. Need a revision of subsistence quotas set in 1969. Suggest allowing 20 kings, 50 sockeye, 50 chum, 50 coho, and 100 pinks. This to apply to Naknek, Egegik, and Ugashik Rivers.
2. Spawning ground surveys - West side will be continued by Mike. Becharof/Ugashik by R. B. Research may do some ground surveys on selected streams. Nushagak operation will consist of red surveys on Wood and Snake and kings in the Nushagak/Mulchatna. Togiak will consist of red surveys on the river, lakes and tributaries, and king and chum surveys on the entire system.

H. IBM Fish Ticket

1. 1974 Catch Run:

First PEL has close correlation to ADF&G estimates.

Final IBM run will probably be completed by mid to late March.

Chum percent on fish tickets applies to all, including those tickets where species are already separated. We may have to code tickets by cannery and apply chum percent only to selected canneries.

In 1975 we will not send any tickets in until notified. Mike is in charge of total IBM process with R. B. providing day to day editing of BEL and PEL.

Supposedly all 1975 tickets to be punched in Anchorage. Ruth Harrington is the Systems Control Clerk. Timing may be slowed up by voting, pay checks, etc.

VIII. TEMPORARY HIRING

- A. Randall to handle hiring for Kvichak smolt (8), offshore (2), outside (2), and inside (4) test fishing. Will have to watch Line 100 to stay within fund allocations. R. B. and Jeff will handle remainder and coordinate with research programs.  
Overtime: Rosier will again authorize a maximum of 60 hours (pay period with 1 1/2 base pay for everthing over 7 1/2 hours day). Pay 1 1/2 for holidays.  
Housing: Females possibly put up in bunkhouses, NMFS "white house," or small com. fish. trailer.  
N-Resident Hire: U. of A. students pursuing wildlife curriculum will receive approval.

IX. F.Y. BUDGETS

- A. Pre-audit provided for all staff members. Possibly some problems in some line items but overall looks good. Big question will be cost of Port Moller and success in getting maintenance contracts for K.S. complex.  
Any surplus Line 300 money could possibly be used for Fri Iliamma studies or fly - around lake inventory.
- B. F.Y. 77 Request should include request for funding to cover use of Public Safety goods. Not charged for it this year but will have to pay in 1977.  
Also to submit a request for additional maintenance man exclusively for complex, and possibly snow plow for complex.  
Payment for flying: No longer to use SA05 for charter. Now put all flights on TR. All point to point flights and fare charges coded to Line 200. Split charters must be coded as fare basis.
- C. Vehicle Costes:  
Annual costs for rental on nine vehicles from Highways is \$8,760 or \$760/month. Consider possiblity of turning in some vehicles during winter or cut down on total vehicles. King Salmon could get by with four and Dillingham would require three.

X. FIELD CAMP AND HEADQUARTERS STATUS

- A. Field Camp Upgrading - Skrade and Bill to conduct annual tour of camps and take Tuck along. Wood River priority for accommodating smolt crew. 12-volt systems in all camps.
- B. Equipment Storage - work on expanding storage for camp equipment. Possibly convert recreation room of bunkhouse into warm storage.
- C. Field Camp Status - BLM has changed land use permit application format so that we will have to make reapplication. Don Bill to do for all camps. All except Igiugig are on non-state land.
- D. Ingiugig Complex - We now have lease for shcool complex. Will try to outfit school to house tower crew. Randall and Tuck will draw up a long range plan for development of the school site as a field

facility. Ken Middleton to look into lease costs and insurance on facility.

- E. Fire Fighting System for AKN complex - Tuck outlined a proposed looping system complete with hydrants to allow for fighting fires as well as conserving water and preventing pipe freeze-ups.
- F. King Salmon Complex - Randall to contact prospective contractors to do maintenance work on complex.  
Plans for expanding or lengthening dock to make it more useful at low tide. Possibly anchor farther out in the river.  
Sewage treatment plant best answer to problems on complex drain field.

#### XI. REPORT ASSIGNMENTS, STATUS OF

- A. 1974 Annual Mgt. Report - Final draft probably ready by June 1.
- B. Nushagak-Togiak Spawning Report - almost written. To be typed this summer.
- C. Combined Smolt Report - Copies out for editing now. Snake Lake smolt not included in this year's report.
- D. 1972-73 C & E Leaflet - 1972 being published now. Text of 1973 report due in few weeks.
- E. Daily C & E - Rosier is requesting regular reports during Emergency Order Period. Mike will draw up a simplified form for transmittal of this information by temporary office manager. Deadline for reporting will be 10 a.m. to Penny in Anchorage and 11 a.m. report to Juneau. Juneau will then compile a C & E for NMFS. Rosier plans to include a comparative fresh-frozen-cured production to case pack report in weekly production report.

#### XII. SPECIAL TOPICS

- A. Communications - Get in radio request ASAP. All camp radios will have to be replaced by 1977. Telephone service to AKN and DLG improving now with two new trunk lines.
- B. Operational Plans - Don Bill to compile this year. Make more detailed this year since it may go into statewide package.
- C. Field Camp Review - Needs to be updated. Probably this fall for 1976 season.
- D. 1975 Forecast - Present preliminary forecast will probably be the final. Eleven different forecasts were compiled with majority of differences in totals related to numbers of 2-ocean age fish. Even the largest forecast that is statistically reasonable leaves the Kvichak River one million short of goal. 2-ocean estimate increased from four million in original forecast to 6.8 million for Kvichak due primarily to more weight given to return per smolt from smolt index estimates. Used linear E/R relationship on Kvichak.

E. Assessment of variable optimum escapement goals for Wood River system - Nelson presented information related to relative 2 and 3-ocean age composition of Wood River escapements and their spawning distribution. When age composition is equal between 2 and 3-ocean ages spawning is well distributed throughout the system and utilizes both beaches and interconnecting rivers. Historically river spawners have composed 33% of the runs are comprised mainly of 3.06 fish whereas beach spawners are about 49% of the run on the average. Theoretical optimum escapement would then be:

High 2 ocean: 1.2 - 1.5 million

High 3 ocean: .4 - .6 million

Interm. 2 & 3 ocean: .8 - 1.0 million

The optimum escapement would then depend on forecast of 2 and 3 ocean age composition. Spawning distribution in past few years was as follows:

<u>Year</u>	<u>Beach Spawners</u>	<u>River Spawners</u>
1971	57%	32%
1972	45%	38%
1973	24%	65%
1974	heavy, probably 60% excessive escapement	

Percentage of creek spawners remains fairly constant. Don Rogers says our forecasting the distribution of spawners. We should confront Rogers and request backup data on his claims.

F. Overall 1975 Management Strategy.

Kvichak and Ugashik, will probably be closed but other districts will be fairly normal.

XIII. NEW PROGRAM IDEAS

A. Work for better communications between area biologist and research project leader.

XIV. STAFF DUTY ASSIGNMENTS

A. Most assignments already made during earlier past of meeting.

B. Additional Assignments:

1. Ken parker and research temporary to coordinate collection and pressing of seales in AKN.

2. Scale Reading - Jeff and Mike read all of west side after season.  
 Randall to read all Egegik catch and escapement and Ugachik escapement.  
 Mike - Nushagak District catch and escapement.  
 Parker - Kvichak escapement  
 Bill - Naknek catch and escapement  
 Paulus - Kvichek catch  
 Krasnowski - Port Moller  
 In-season readings should include only first ten samples on a sheet or ten random samples on sheet. This in-season reading to be used on preliminary C & E.

3. Scale proofs:
  - West side - Nelson
  - East side - Krasnowski

- C. Japanese High Seas catches - Bob Paulus
- D. South Unimak catches - Nelson to coordinate with Davenport.
- E. Herry Fishery - Nelson
  - Forms and Requirements - Nelson and Skradè handle form charges, new forms, and orders for existing forms.

XV. INTER-AGENCY COORDINATING NEEDS

- A. Will have Pennoyer set up inter-agency meeting in Anchorage in April.

XVI. CRITIQUE

- A. Ken Middleton suggested that future meetings return to A & B team approach. Much of this meetings discussion centered around pros and cons of positioning various staff members in most strategic location. New demands from increased inter-agency relations, habitat requirements, etc. changing whole staffing picture and responsibilities.

TABLE 1. Summary of Staff Duty Assignments Agreed upon at Staff Meeting in AKN, February 18-21:

Program or Responsibility	Person(s)		
	East Side	West Side	Baywide
Catch Sampling	Brand X	J. Skrade	
Esc. Enu./sampling	Bill	Skrade	
Smolting: Kvichak	Brand X (Randall)		
Naknek	Bill		
Ugashik	Skrade		
Wood	Krasnowski		
Test fishing: Offshore	Randall		
Outside	Randall	Nelson	
Inside	Brand X (Randall)		
Beluga Predation Cont.	Brand X (R. B.)	(Nelson)	Skrade
Becharof/Ug Inventory			Parker
Subsistence Surveys	Bill	Skrade	
Spawning Gr. Surveys	Bill	Nelson	
IBM Fish tick. system			Nelson
Temporary Hiring	Bill	Skrade	
Budget Preparation			Nelson
Program Up-Grading: HQ	Tuck	Nelson	
FC	Bill	Skrade	
1975 Operational Plans			Bill
<u>Miscellaneous:</u>			
Scale reading and proofing			Staff
Jap High Seas monitor			Paulus
S. Peninsula fishery monitor			Nelson
Herring fishery			Nelson
Forms/Requirements			Nelson
Field Camp Land Status			R. B.

Figure 1. PROPOSED LINE OF AUTHORITY - BRISTOL BAY

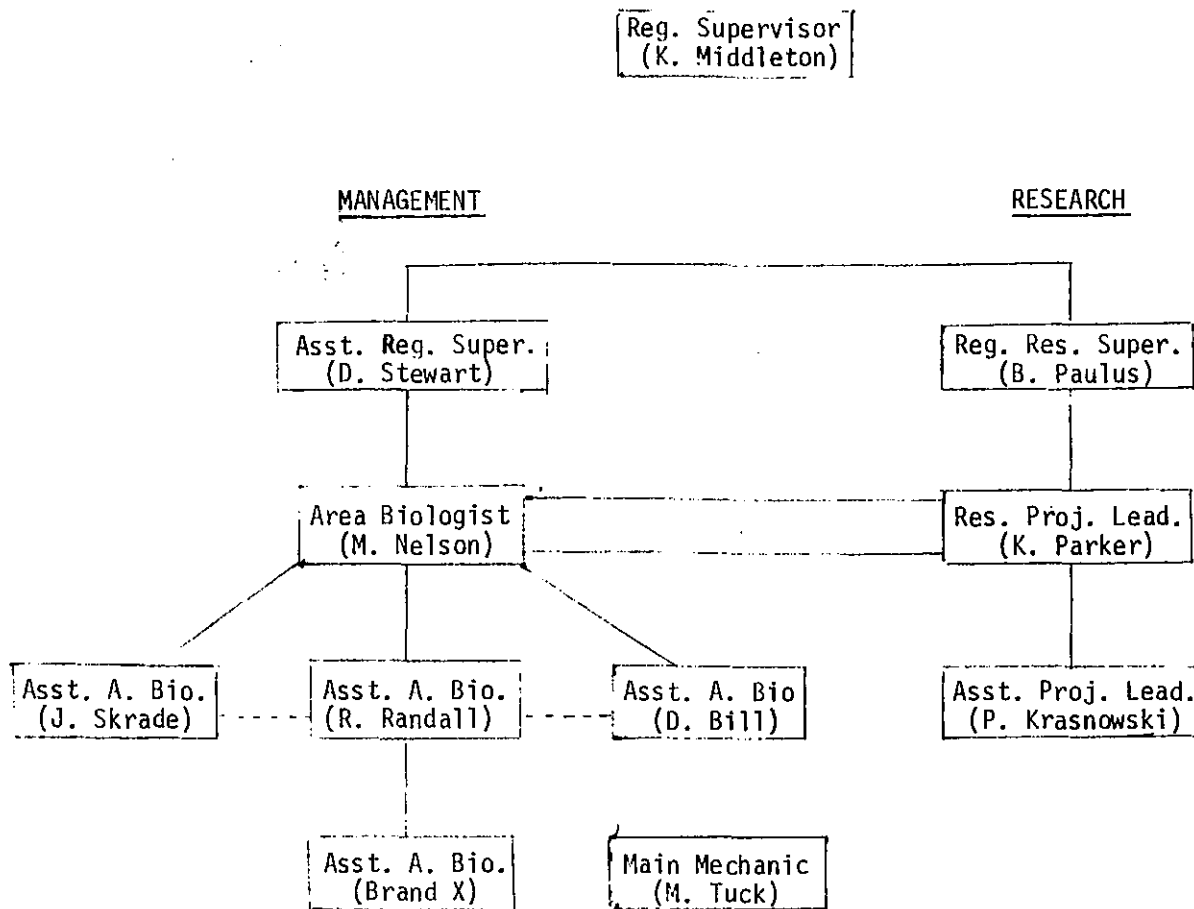


Table I. MAJOR MGT. DUTIES/RESPONSIBILITIES - BRISTOL BAY

Description of Major Duties and Responsibilities	Dillingham		King Salmon		Anchorage	
	Nelson	Skrade	Bill	Tuck	Randall	Brand X
1. In-season mgt. of Bay Fishery (E. O.'s etc.)	x					
2. Asst. In-season mgt. of Eg-Ug. districts					x	
3. <u>Test fishing programs:</u>						
Offshore (Budget, op. plans, (hiring) supervision					x	
Outside (Budget, op. plans, (hiring) supervision	x				x	
Inside (Budget, op. plans, (hiring) supervision						x
4. Buoy/Marker Program (Budget, placement/removed)						x
5. Cannery Catch Report Monitoring/Analysis	x				x	
6. Beluga Predation Control Program						x
7. <u>Smolt Programs:</u>						
Kvichak River (Budget, op. plans, (hiring) supervision						x
Naknek River (Budget, op. plans, (hiring) supervision			x			
Uqashik River (Budget, op. plans, (hiring) supervision		x				
8. Subsistence fishery program		x	x			
9. Herring Fishery Surveillance	x					
10. <u>Aerial Survey Program:</u>						
Management Surveys	x				x	x
Spawning Ground	x		x			
11. Catch Sampling Program (supervisor)		x				x
12. Escapement En./Samp. (Budget, op. plans, superv. maintenance and supply)		x	x			
13. Office Personnel (supervision of)	x				x	
14. Hiring of all personnel (* interviews in Anchorage)		x	x			*x
15. Repair/Maintenance Related Subjects				x		
16. IBM Fish Ticket Process	x					
17. Habitat Related Activities	x				x	
18. Budget Preparation (x Main responsibility)	x	x	x	x	x	x
19. Administrative Bull-Shit	x	x	x	x	x	x
20. Equipment Inventory	x		x		x	



BOAT  
~~Outboard Motor Inventory~~

Date: 7/26/1977

No.	Make	Shaft	Year	Condition	Remarks (S/N)	Assignment
1	11' Boston	14"	1974	Good		1974
2	14' Evinrude	14"	1974	Good		1974
3	14' Evinrude	14"	1974	Good		1974
4	14' Evinrude	14"	1974	Good		1974
5	14' Evinrude	14"	1974	Good		1974
6	14' Evinrude	14"	1974	Good		1974
7	14' Evinrude	14"	1974	Good		1974
8	14' Evinrude	14"	1974	Good		1974
9	14' Evinrude	14"	1974	Good		1974
10	14' Evinrude	14"	1974	Good		1974
11	14' Evinrude	14"	1974	Good		1974
12	14' Evinrude	14"	1974	Good		1974
13	14' Evinrude	14"	1974	Good		1974
14	14' Evinrude	14"	1974	Good		1974
15	14' Evinrude	14"	1974	Good		1974
16	14' Evinrude	14"	1974	Good		1974
17	14' Evinrude	14"	1974	Good		1974
18	14' Evinrude	14"	1974	Good		1974
19	14' Evinrude	14"	1974	Good		1974
20	14' Evinrude	14"	1974	Good		1974
21	14' Evinrude	14"	1974	Good		1974
22	14' Evinrude	14"	1974	Good		1974
23	14' Evinrude	14"	1974	Good		1974
24	14' Evinrude	14"	1974	Good		1974
25	14' Evinrude	14"	1974	Good		1974
26	14' Evinrude	14"	1974	Good		1974
27	14' Evinrude	14"	1974	Good		1974
28	14' Evinrude	14"	1974	Good		1974
29	14' Evinrude	14"	1974	Good		1974
30	14' Evinrude	14"	1974	Good		1974

CONTINUED

cc: 1/1/1977

