

APPENDIX B
(Volume 4 of 4)

Project Maps

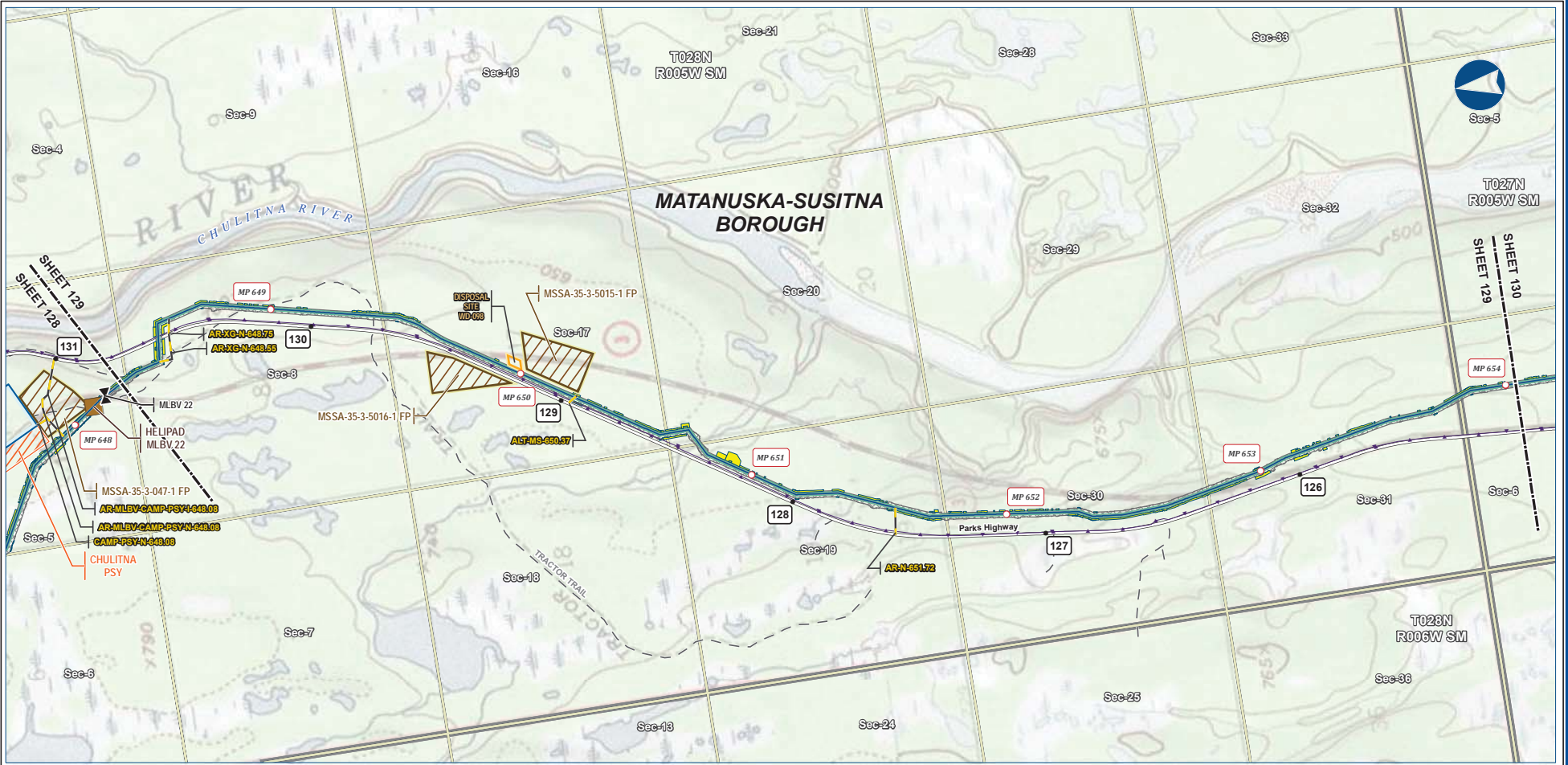
Mainline Facilities MP 648–806 and Liquefaction Facilities

APPENDIX B Volume 4: Project Maps – Mainline Facilities MP 648–806 and Liquefaction Facilities

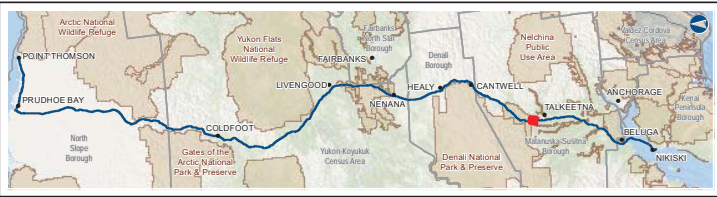
Table of Contents

Mainline Facilities (cont'd).....	B-136
Liquefaction Facilities	B-164

Mainline Facilities



B-136



Legend		EXISTING FEATURES	
Permanent ROW	Mainline Pipeline	Existing Roads	Off Road Trails
Construction ROW	ATWS	Buried Cable	Section
Access Road - Gravel	Off ROW Camp	Pipe Storage Yard (PSY)	Township
Mainline Blockvalve	Disposal Site	Material Site Study Area (MSSA)	
Helipad			

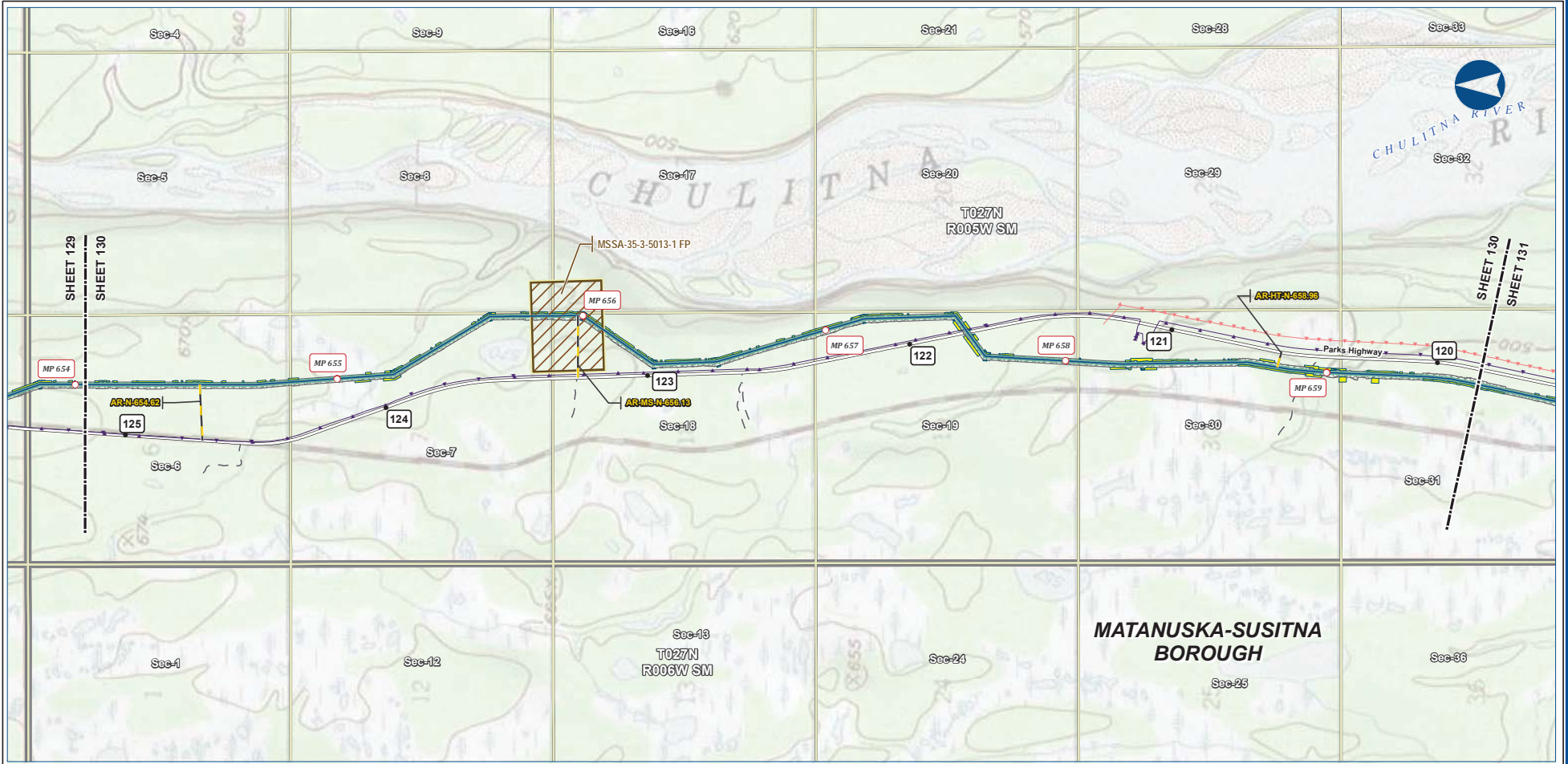
ALASKA LNG PROJECT			
Preliminary Facility Locations			
Mainline Rev C2 Route			
BOROUGH:	MATANUSKA-SUSITNA	DRAWN BY:	AGDC
STATE:	ALASKA	CHECKED BY:	
REV. NO.:	REVISION	DATE	
A	ISSUED FOR REVIEW	2017-03-10	
PRELIMINARY			
1:24,000			
DATE:	2017-03-10	PROJECTION:	NAD83 NSRS2007 ALASKAZONE4 FTUS 54392

DISCLAIMER

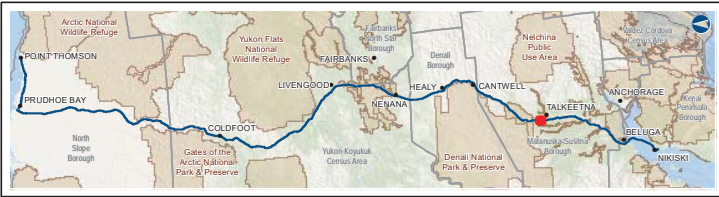
The information contained herein is for informational or planning purposes only. It does not nor should it be deemed to be an offer, request or proposals for rights or occupation of any kind. The Alaska LNG Project Participants and their respective officers, employees and agents, make no warranty, implied or otherwise, nor accept any liability, as to the accuracy or completeness of the information contained in these documents, drawings or electronic files. Do not remove or delete this note from document, drawing or electronic file.

PRELIMINARY FACILITY LOCATIONS - MAINLINE REV C2 ROUTE

ALASKA LNG



B-137



Legend

Mainline Pipeline	Permanent ROW	Existing Roads
Access Road - Gravel	Construction ROW	Off Road Trails
	ATWS	Buried Cable
	Material Site Study Area (MSSA)	Overhead Powerline
		Section
		Township

ALASKA LNG PROJECT
Preliminary Facility Locations
Mainline Rev C2 Route

BOROUGH:	MATANUSKA-SUSITNA	DRAWN BY:	AGDC
STATE:	ALASKA	CHECKED BY:	
REV. NO.:	REVISION	DATE	
A	ISSUED FOR REVIEW	2017-03-10	
PRELIMINARY			
1:24,000			
DATE:	2017-03-10	PROJECTION:	NAD83 NSRS2007 ALASKAZONE4 FTUS 54392

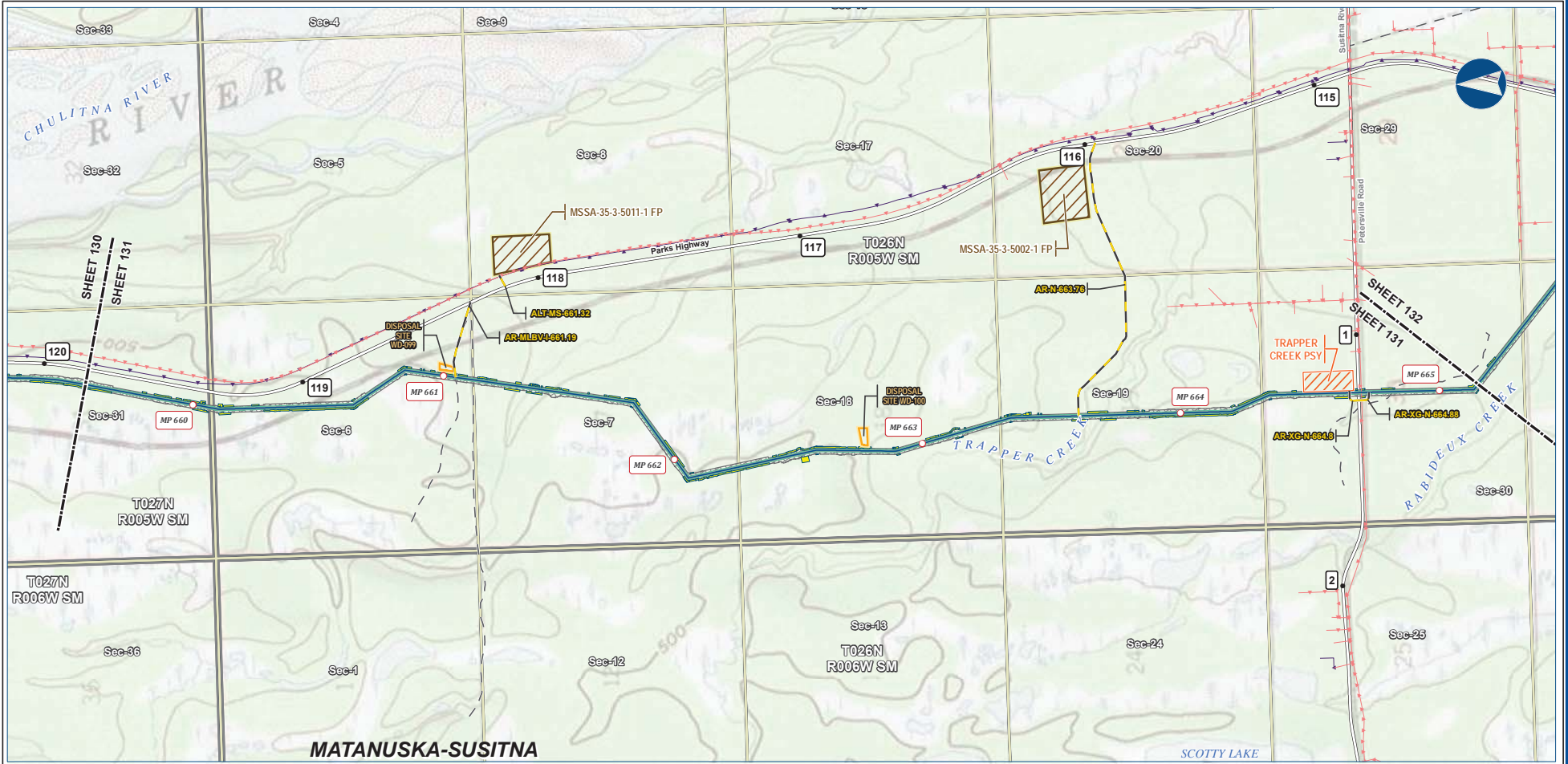
DISCLAIMER

The information contained herein is for informational or planning purposes only. It does not nor should it be deemed to be an offer, request or proposals for rights or occupation of any kind. The Alaska LNG Project Participants and their respective officers, employees and agents, make no warranty, implied or otherwise, nor accept any liability, as to the accuracy or completeness of the information contained in these documents, drawings or electronic files. Do not remove or delete this note from document, drawing or electronic file.

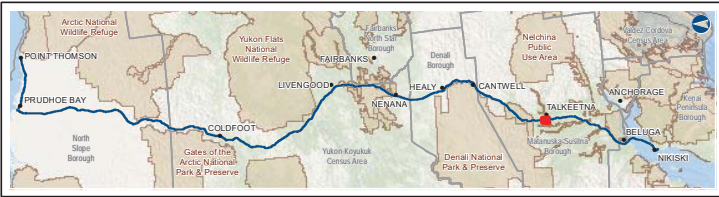
Alaska LNG Project

PRELIMINARY FACILITY LOCATIONS - MAINLINE REV C2 ROUTE

ALASKA LNG



B-138



Legend

Mainline Pipeline	Permanent ROW	Construction ROW	Existing Roads
Access Road - Gravel	ATWS	Pipe Storage Yard (PSY)	Off Road Trails
Disposal Site	Disposal Site (MSSA)	Buried Cable	Overhead Powerline
		Section	Township

ALASKA LNG PROJECT
Preliminary Facility Locations
Mainline Rev C2 Route

BOROUGH:	MATANUSKA-SUSITNA	DRAWN BY:	AGDC
STATE:	ALASKA	CHECKED BY:	
REV. NO.:	REVISION	DATE	
A	ISSUED FOR REVIEW	2017-03-10	
PRELIMINARY			
1:24,000			
DATE:	2017-03-10	PROJECTION:	NAD83 NRSR2007 ALASKAZONE4 FTUS 54392

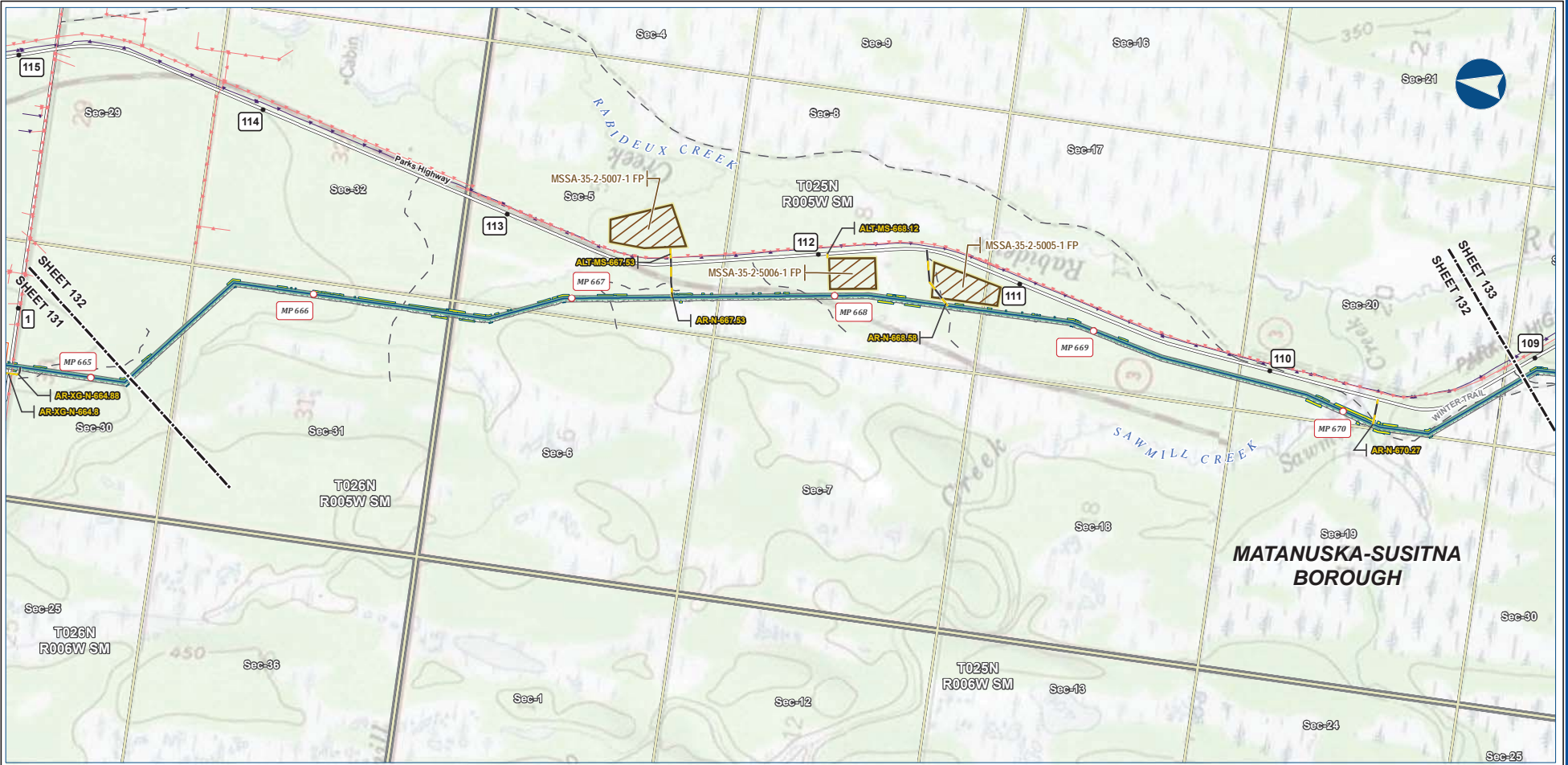
DISCLAIMER

The information contained herein is for informational or planning purposes only. It does not nor should it be deemed to be an offer, request or proposals for rights or occupation of any kind. The Alaska LNG Project Participants and their respective officers, employees and agents, make no warranty, implied or otherwise, nor accept any liability, as to the accuracy or completeness of the information contained in these documents, drawings or electronic files. Do not remove or delete this note from document, drawing or electronic file.

Alaska LNG Project

PRELIMINARY FACILITY LOCATIONS - MAINLINE REV C2 ROUTE

ALASKA LNG



B-139



Legend		EXISTING FEATURES	
	Mainline Pipeline		Existing Roads
	Construction ROW		Off Road Trails
	Access Road - Gravel		Buried Cable
	Permanent ROW		Overhead Powerline
	Construction ROW		Section
	ATWS		Township
	Pipe Storage Yard (PSY)		
	Material Site Study Area (MSSA)		

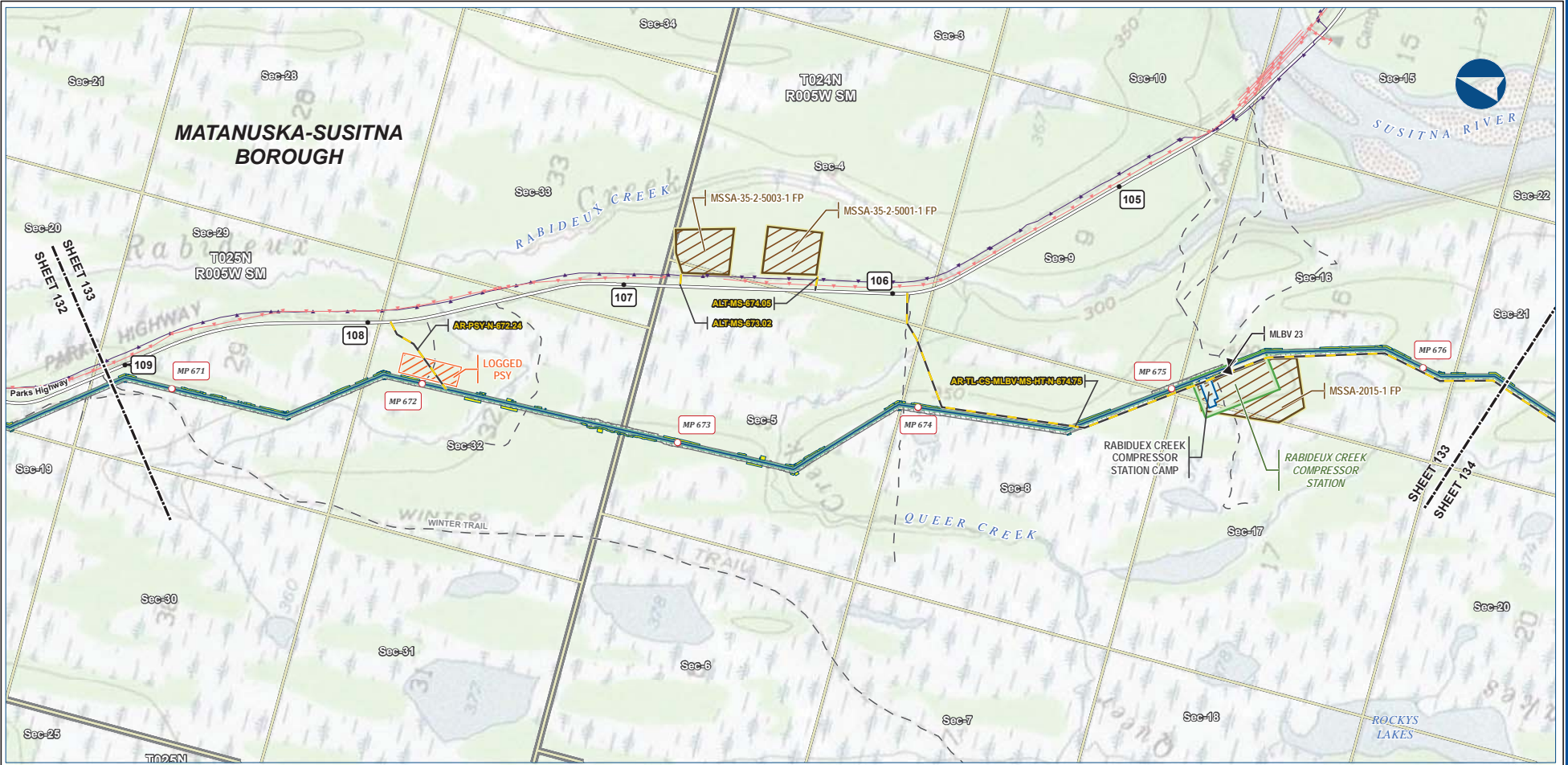
ALASKA LNG PROJECT			
Preliminary Facility Locations			
Mainline Rev C2 Route			
BOROUGH:	MATANUSKA-SUSITNA	DRAWN BY:	AGDC
STATE:	ALASKA	CHECKED BY:	
REV. NO.:	REVISION	DATE	
A	ISSUED FOR REVIEW	2017-03-10	
PRELIMINARY			
1:24,000			
0 1/4 1/2 3/4 1 MILE			
DATE:	2017-03-10	PROJECTION:	NAD83 NSRS2007 ALASKAZONE4 FTUS 54392

DISCLAIMER

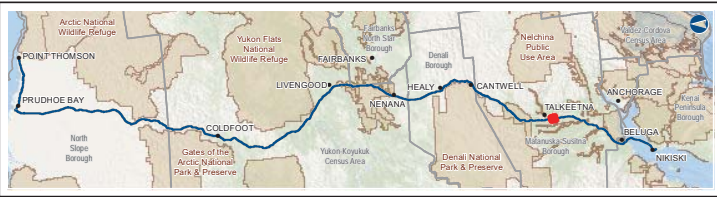
The information contained herein is for informational or planning purposes only. It does not nor should it be deemed to be an offer, request or proposals for rights or occupation of any kind. The Alaska LNG Project Participants and their respective officers, employees and agents, make no warranty, implied or otherwise, nor accept any liability, as to the accuracy or completeness of the information contained in these documents, drawings or electronic files. Do not remove or delete this note from document, drawing or electronic file.

Alaska LNG Project

PRELIMINARY FACILITY LOCATIONS - MAINLINE REV C2 ROUTE



B-140

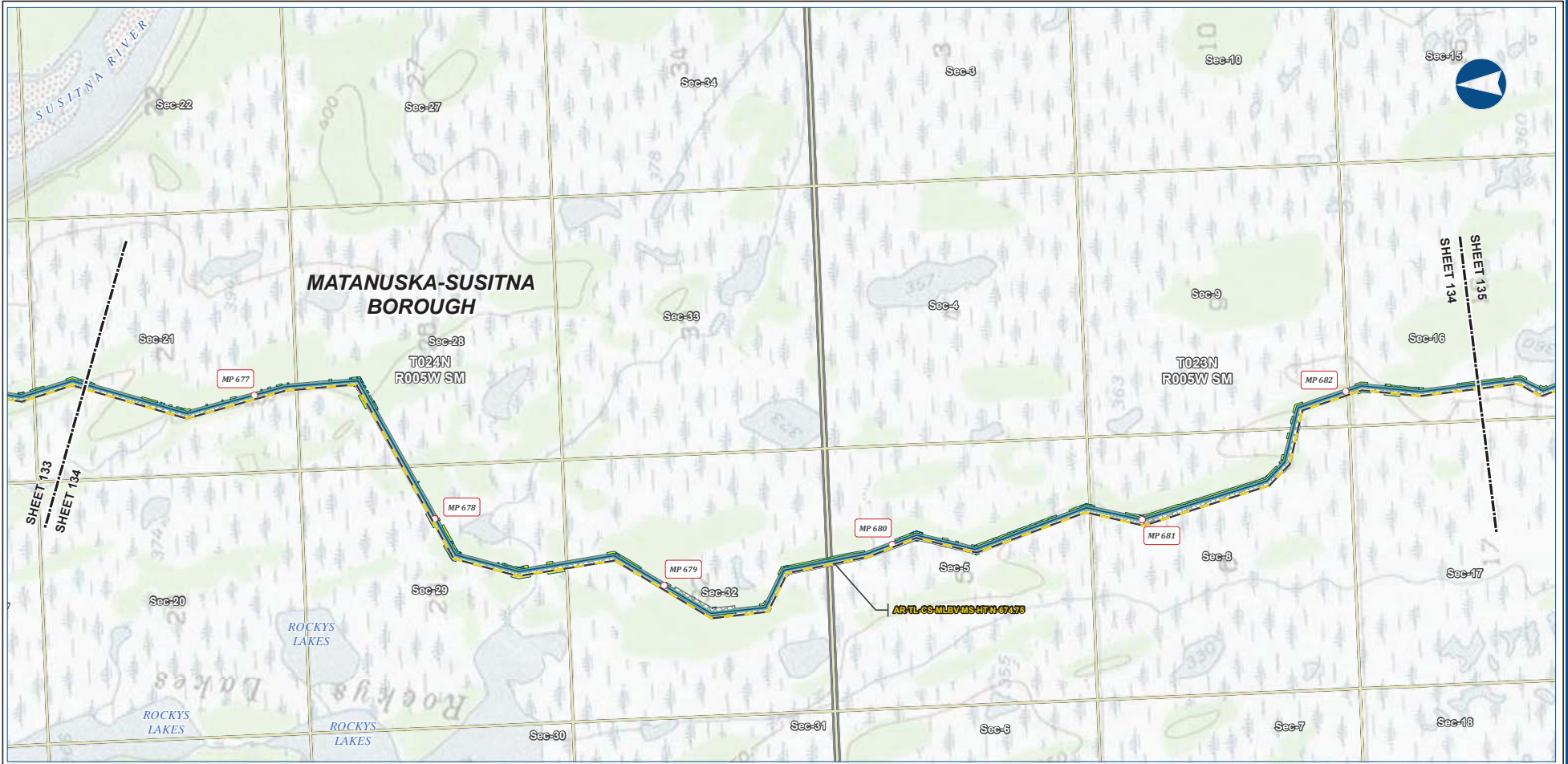


Legend		EXISTING FEATURES	
Mainline Pipeline	Permanent ROW	Existing Roads	Buried Cable
Access Road - Gravel	Construction ROW	Off Road Trails	Overhead Powerline
Mainline Blockvale	ATWS	Section	Township
	Compressor Station		
	Camp		
	Pipe Storage Yard (PSY)		
	Material Site Study Area (MSSA)		

ALASKA LNG PROJECT			
Preliminary Facility Locations			
Mainline Rev C2 Route			
BOROUGH:	MATANUSKA-SUSITNA	DRAWN BY:	AGDC
STATE:	ALASKA	CHECKED BY:	
REV. NO.:	REVISION	DATE	
A	ISSUED FOR REVIEW	2017-03-10	
PRELIMINARY			
1:24,000			
DATE:	2017-03-10	PRODUCTION:	NAD83 NSRS2007 ALASKAZONE4 FTUS 54392

DISCLAIMER

The information contained herein is for informational or planning purposes only. It does not nor should it be deemed to be an offer, request or proposals for rights or occupation of any kind. The Alaska LNG Project Participants and their respective officers, employees and agents, make no warranty, implied or otherwise, nor accept any liability, as to the accuracy or completeness of the information contained in these documents, drawings or electronic files. Do not remove or delete this note from document, drawing or electronic file.



B-141



Legend

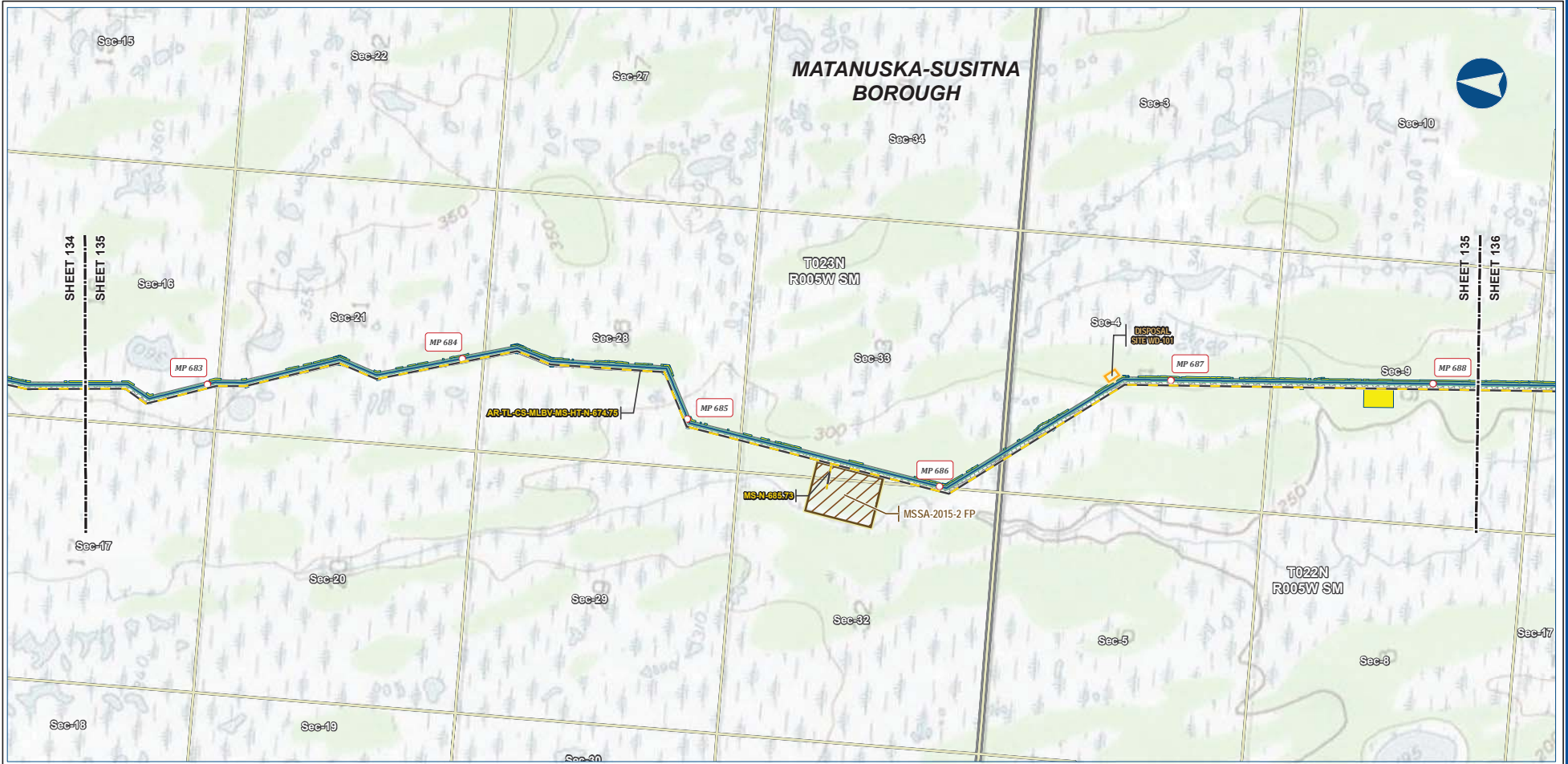
Mainline Pipeline	Permanent ROW	Existing Roads
Access Road - Gravel	Construction ROW	Section
	ATWS	Township

ALASKA LNG PROJECT
Preliminary Facility Locations
Mainline Rev C2 Route

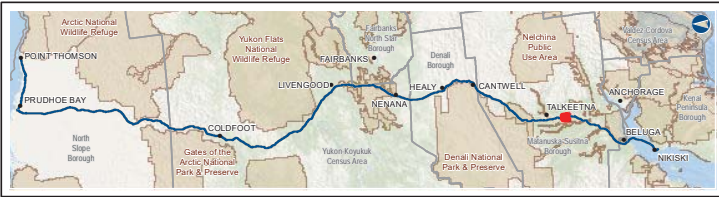
BOROUGH:	MATANUSKA-SUSITNA	DRAWN BY:	AGDC
STATE:	ALASKA	CHECKED BY:	
REV. NO.:	A	REVISION	ISSUED FOR REVIEW
		DATE	2017-03-10
PRELIMINARY			
1:24,000			
DATE:	2017-03-10	PROJECTION:	NAD83 NSRS2007 ALASKAZONE4 FTUS 54392

DISCLAIMER

The information contained herein is for informational or planning purposes only. It does not nor should it be deemed to be an offer, request or proposals for rights or occupation of any kind. The Alaska LNG Project Participants and their respective officers, employees and agents, make no warranty, implied or otherwise, nor accept any liability, as to the accuracy or completeness of the information contained in these documents, drawings or electronic files. Do not remove or delete this note from document, drawing or electronic file.



B-142



Legend

PIPELINE	Permanent ROW	Existing Roads
Mainline Pipeline	Construction ROW	Section
Access Road - Gravel	ATWS	Township
	Disposal Site	
	Material Site Study Area (MSSA)	

ALASKA LNG PROJECT
Preliminary Facility Locations
Mainline Rev C2 Route

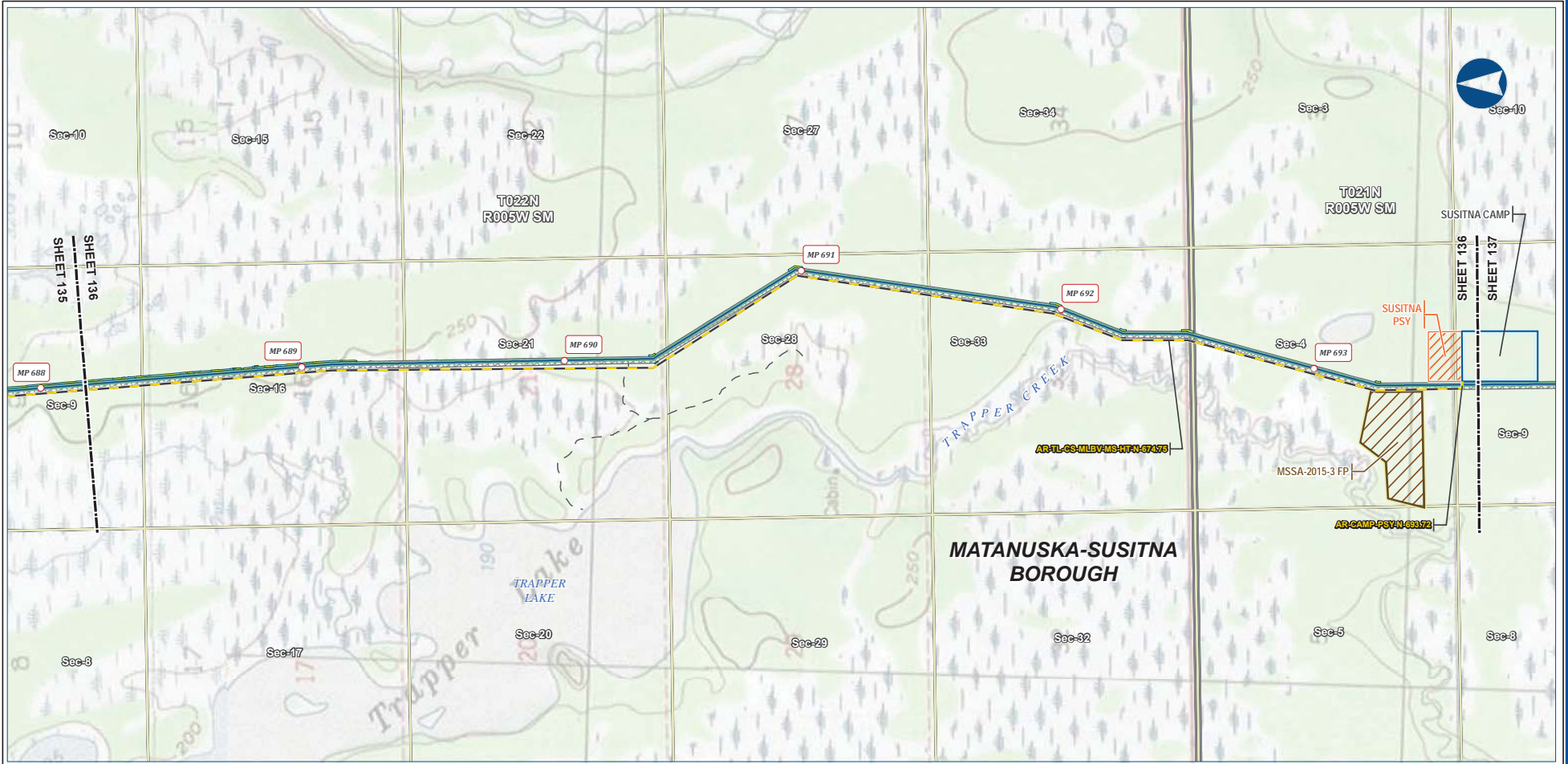
BOROUGH:	MATANUSKA-SUSITNA	DRAWN BY:	AGDC
STATE:	ALASKA	CHECKED BY:	
REV. NO.:	REVISION	DATE	
A	ISSUED FOR REVIEW	2017-03-10	
PRELIMINARY			
1:24,000			
DATE:	2017-03-10	PROJECTION:	NAD83 NRSR2007 ALASKAZONE4 FTUS 54392

DISCLAIMER

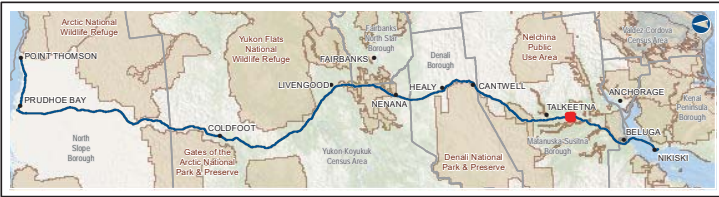
The information contained herein is for informational or planning purposes only. It does not nor should it be deemed to be an offer, request or proposals for rights or occupation of any kind. The Alaska LNG Project Participants and their respective officers, employees and agents, make no warranty, implied or otherwise, nor accept any liability, as to the accuracy or completeness of the information contained in these documents, drawings or electronic files. Do not remove or delete this note from document, drawing or electronic file.

PRELIMINARY FACILITY LOCATIONS - MAINLINE REV C2 ROUTE

ALASKA LNG



B-143



Legend		EXISTING FEATURES	
Mainline Pipeline	Permanent ROW	Existing Roads	Off Road Trails
Access Road - Gravel	Construction ROW	Off Road Camp	Township
Off ROW Camp	ATWS	Pipe Storage Yard (PSY)	
Material Site Study Area (MSSA)			

ALASKA LNG PROJECT Preliminary Facility Locations Mainline Rev C2 Route			
BOROUGH:	MATANUSKA-SUSITNA	DRAWN BY:	AGDC
STATE:	ALASKA	CHECKED BY:	
REV. NO.:	REVISION	DATE	
A	ISSUED FOR REVIEW	2017-03-10	
PRELIMINARY			
1:24,000			
DATE:	2017-03-10	PROJECTION:	NAD83 NSRS2007 ALASKAZONE4 FTUS 54392

DISCLAIMER

The information contained herein is for informational or planning purposes only. It does not nor should it be deemed to be an offer, request or proposals for rights or occupation of any kind. The Alaska LNG Project Participants and their respective officers, employees and agents, make no warranty, implied or otherwise, nor accept any liability, as to the accuracy or completeness of the information contained in these documents, drawings or electronic files. Do not remove or delete this note from document, drawing or electronic file.

Alaska LNG Project



B-144

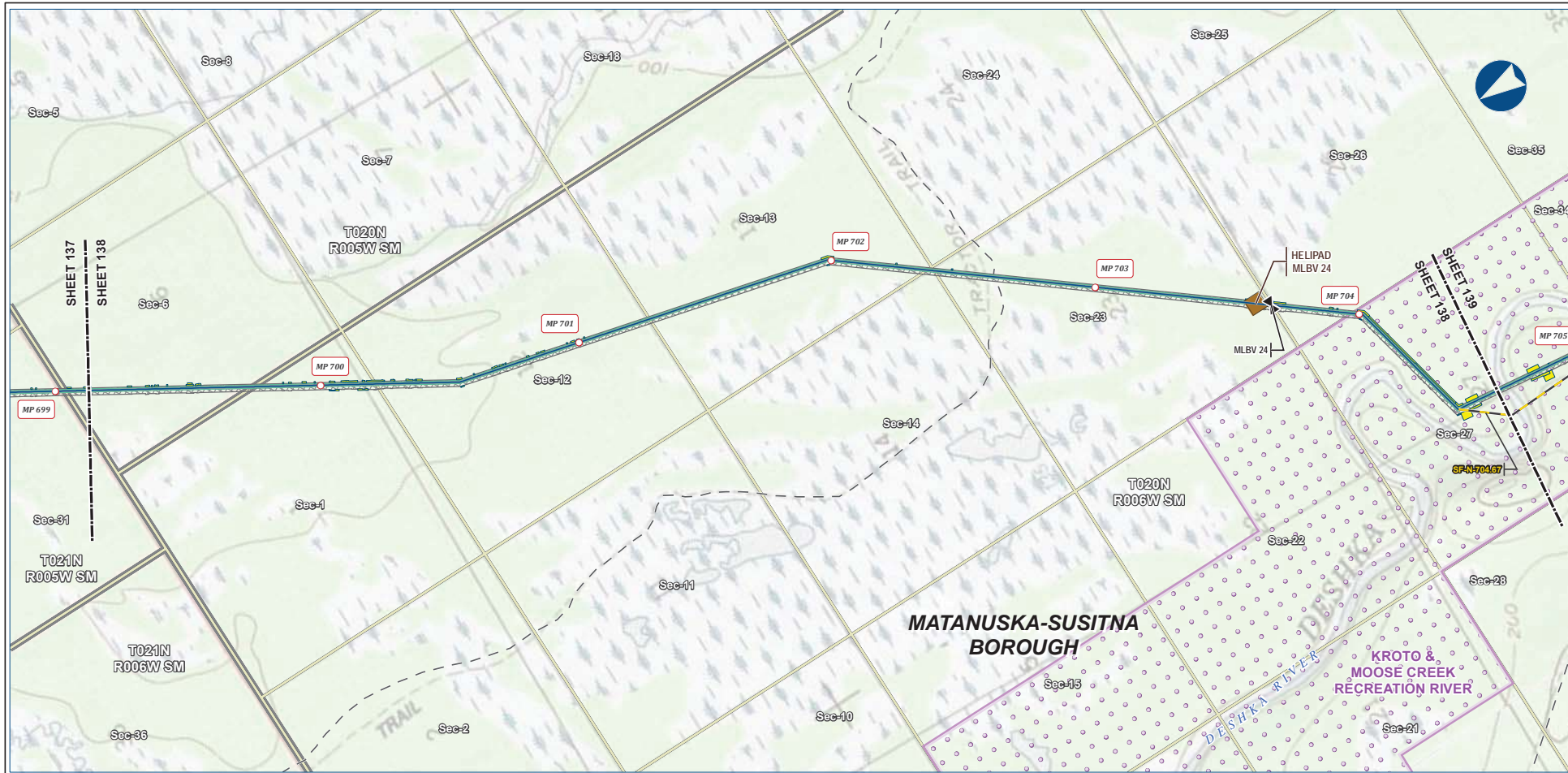


Legend		EXISTING FEATURES	
Mainline Pipeline	Permanent ROW	Existing Roads	Off Road Trails
Access Road - Gravel	Construction ROW	Section	Township
Off ROW Camp	ATWS		
Pipe Storage Yard (PSY)	Material Site Study Area (MSSA)		

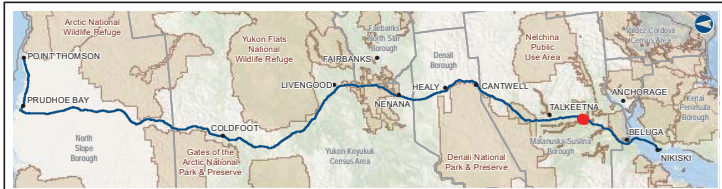
ALASKA LNG PROJECT Preliminary Facility Locations Mainline Rev C2 Route			
BOROUGH:	MATANUSKA-SUSITNA	DRAWN BY:	AGDC
STATE:	ALASKA	CHECKED BY:	
REV. NO.:	REVISION	DATE	
A	ISSUED FOR REVIEW	2017-03-10	
PRELIMINARY			
1:24,000			
DATE: 2017-03-10	PROJECTION: NAD83 NSRS2007 ALASKAZONE4 FTUS 54392	DWG: RR1_APPENDIX_A1_MAINLINE_TOPO_REV_C2_CL	SHEET: 137

DISCLAIMER

The information contained herein is for informational or planning purposes only. It does not nor should it be deemed to be an offer, request or proposals for rights or occupation of any kind. The Alaska LNG Project Participants and their respective officers, employees and agents, make no warranty, implied or otherwise, nor accept any liability, as to the accuracy or completeness of the information contained in these documents, drawings or electronic files. Do not remove or delete this note from document, drawing or electronic file.



B-145



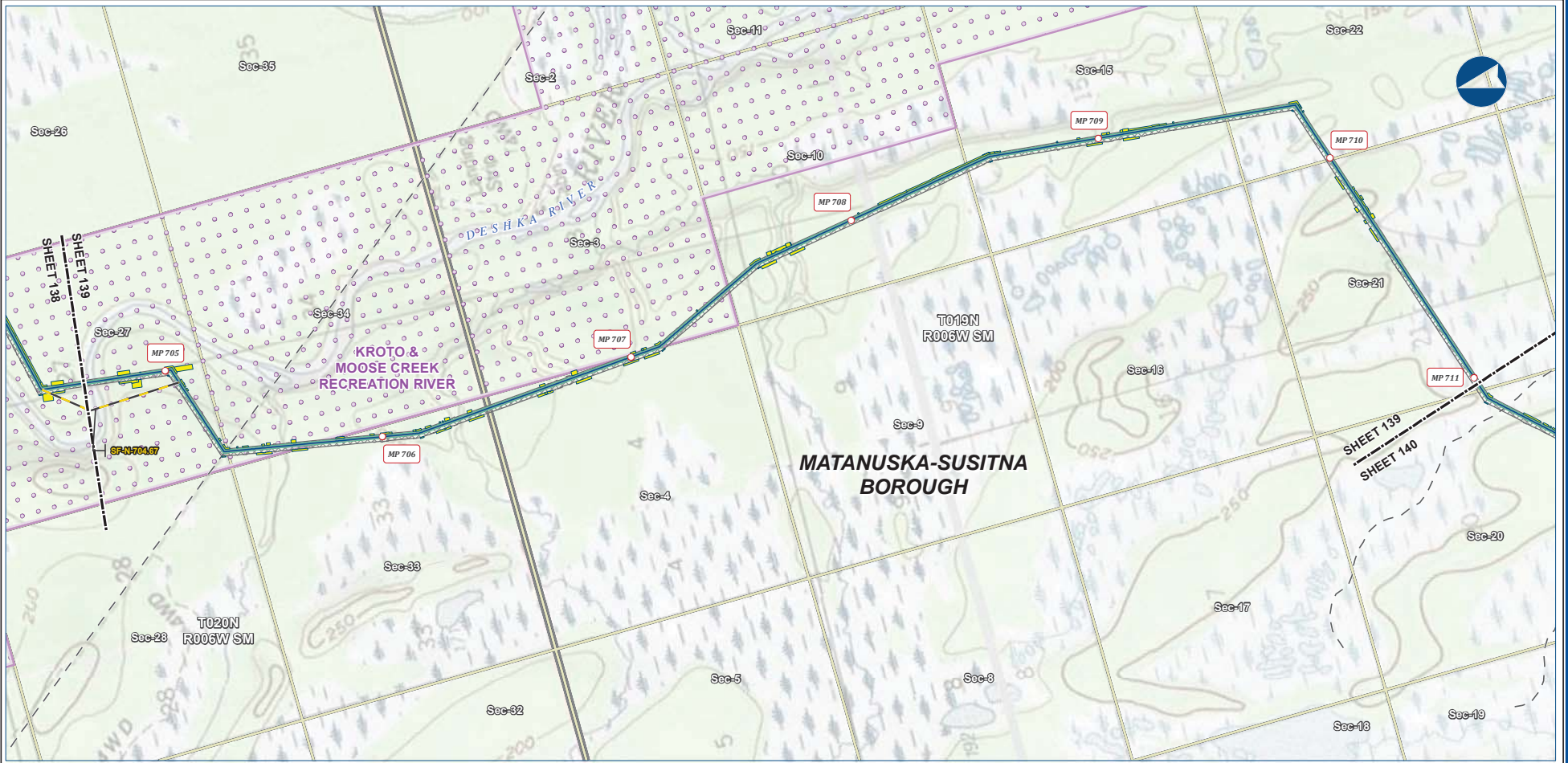
Legend	
Pipeline	Permanent ROW
Mainline Pipeline	Construction ROW
Access Road - Gravel	ATWS
Mainline Blockvalve	Conservation Lands
Helipad	Section
	Township
EXISTING FEATURES	
Existing Roads	Off Road Trails
Conservation Lands	

ALASKA LNG PROJECT			
Preliminary Facility Locations			
Mainline Rev C2 Route			
BOROUGH:	MATANUSKA-SUSITNA	DRAWN BY:	AGDC
STATE:	ALASKA	CHECKED BY:	
REV. NO.:	REVISION	DATE	
A	ISSUED FOR REVIEW	2017-03-10	
PRELIMINARY			
1:24,000			
DATE:	2017-03-10	PROJECTION:	NAD83 NRSR2007 ALASKAZONE4 FTUS S4392

DISCLAIMER

The information contained herein is for informational or planning purposes only. It does not nor should it be deemed to be an offer, request or proposals for rights or occupation of any kind. The Alaska LNG Project Participants and their respective officers, employees and agents, make no warranty, implied or otherwise, nor accept any liability, as to the accuracy or completeness of the information contained in these documents, drawings or electronic files. Do not remove or delete this note from document, drawing or electronic file.

PRELIMINARY FACILITY LOCATIONS - MAINLINE REV C2 ROUTE



B-146



Alaska LNG Project

Legend

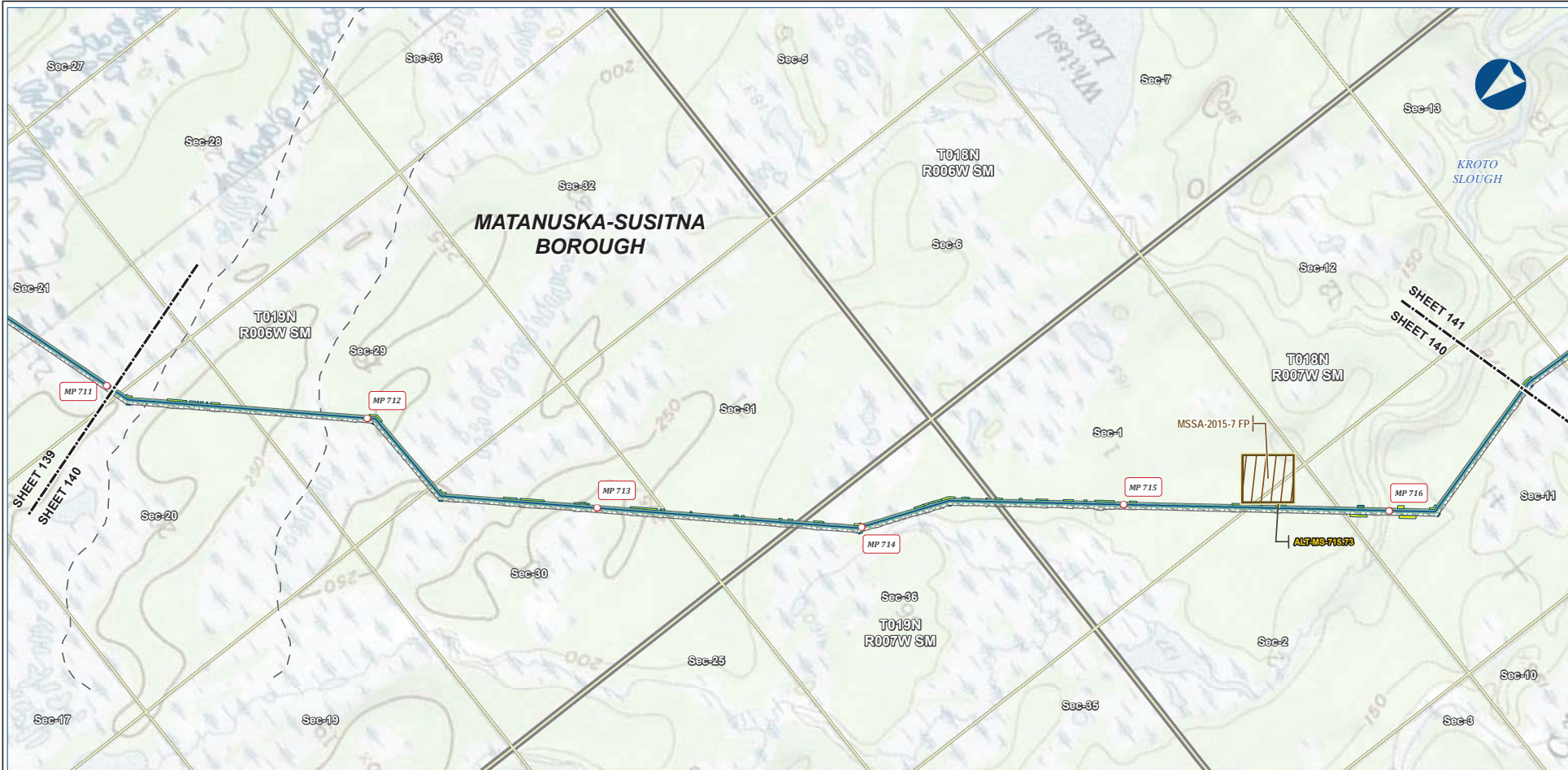
Mainline Pipeline	Permanent ROW	Existing Roads
Access Road - Gravel	Construction ROW	Off Road Trails
	ATWS	Conservation Lands
		Section
		Township

ALASKA LNG PROJECT
Preliminary Facility Locations
Mainline Rev C2 Route

BOROUGH:	MATANUSKA-SUSITNA	DRAWN BY:	AGDC
STATE:	ALASKA	CHECKED BY:	
REV. NO.:	REVISION	DATE	
A	ISSUED FOR REVIEW	2017-03-10	
PRELIMINARY			
1:24,000			
DATE:	2017-03-10	PROJECTION:	NAD83 NRSR2007 ALASKAZONE4 FTUS 54392

DISCLAIMER

The information contained herein is for informational or planning purposes only. It does not nor should it be deemed to be an offer, request or proposals for rights or occupation of any kind. The Alaska LNG Project Participants and their respective officers, employees and agents, make no warranty, implied or otherwise, nor accept any liability, as to the accuracy or completeness of the information contained in these documents, drawings or electronic files. Do not remove or delete this note from document, drawing or electronic file.



B-147



Legend

Mainline Pipeline	Permanent ROW	Existing Roads
Access Road - Gravel	Construction ROW	Off Road Trails
ATWS	Material Site Study Area (MSSA)	Section
		Township

ALASKA LNG PROJECT
Preliminary Facility Locations
Mainline Rev C2 Route

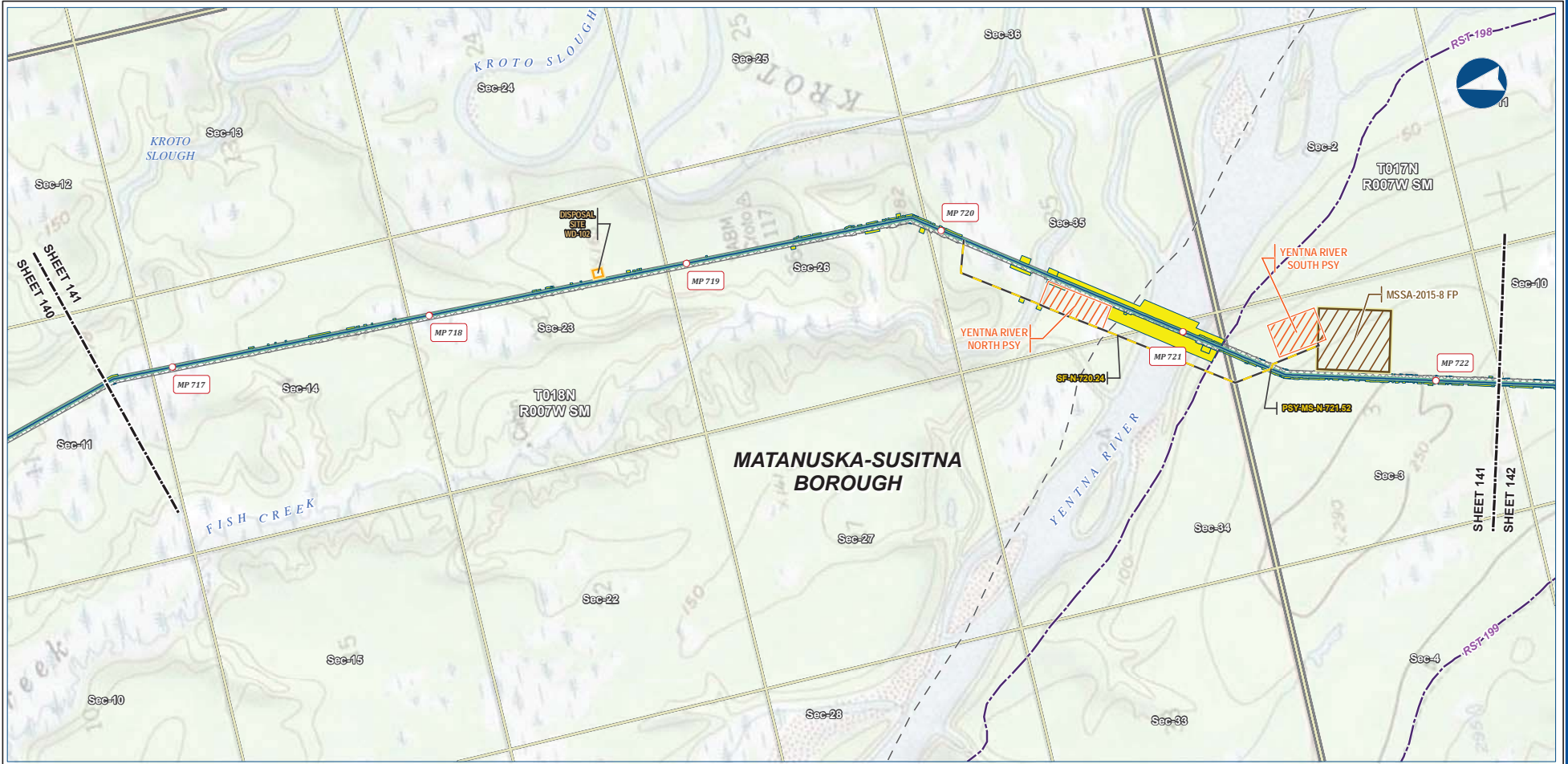
BOROUGH:	MATANUSKA-SUSITNA	DRAWN BY:	AGDC
STATE:	ALASKA	CHECKED BY:	
REV. NO.:	A	REVISION	ISSUED FOR REVIEW
		DATE	2017-03-10
PRELIMINARY			
1:24,000			
DATE:	2017-03-10	PROJECTION:	NAD83 NRSR2007 ALASKAZONE4 FTUS 54392

DISCLAIMER

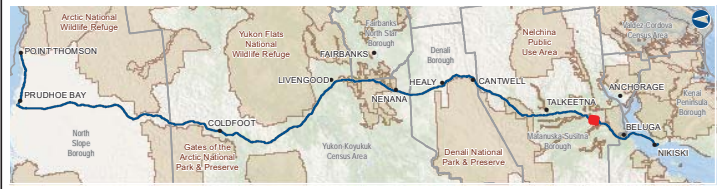
The information contained herein is for informational or planning purposes only. It does not nor should it be deemed to be an offer, request or proposals for rights or occupation of any kind. The Alaska LNG Project Participants and their respective officers, employees and agents, make no warranty, implied or otherwise, nor accept any liability, as to the accuracy or completeness of the information contained in these documents, drawings or electronic files. Do not remove or delete this note from document, drawing or electronic file.

PRELIMINARY FACILITY LOCATIONS - MAINLINE REV C2 ROUTE

ALASKA LNG



B-148



Legend		EXISTING FEATURES	
Mainline Pipeline	Permanent ROW	Existing Roads	Revised Statute 2477 Trail
Access Road - Gravel	Construction ROW	Off Road Trails	Section
Pipe Storage Yard (PSY)	ATWS	Township	
Disposal Site	Disposal Site		
Material Site Study Area (MSSA)			

ALASKA LNG PROJECT Preliminary Facility Locations Mainline Rev C2 Route			
BOROUGH:	MATANUSKA-SUSITNA	DRAWN BY:	AGDC
STATE:	ALASKA	CHECKED BY:	
REV. NO.:	REVISION	DATE	
A	ISSUED FOR REVIEW	2017-03-10	
PRELIMINARY			
1:24,000			
DATE:	2017-03-10	PROJECTION:	NAD83 NSRS2007 ALASKAZONE4 FTUS 54392

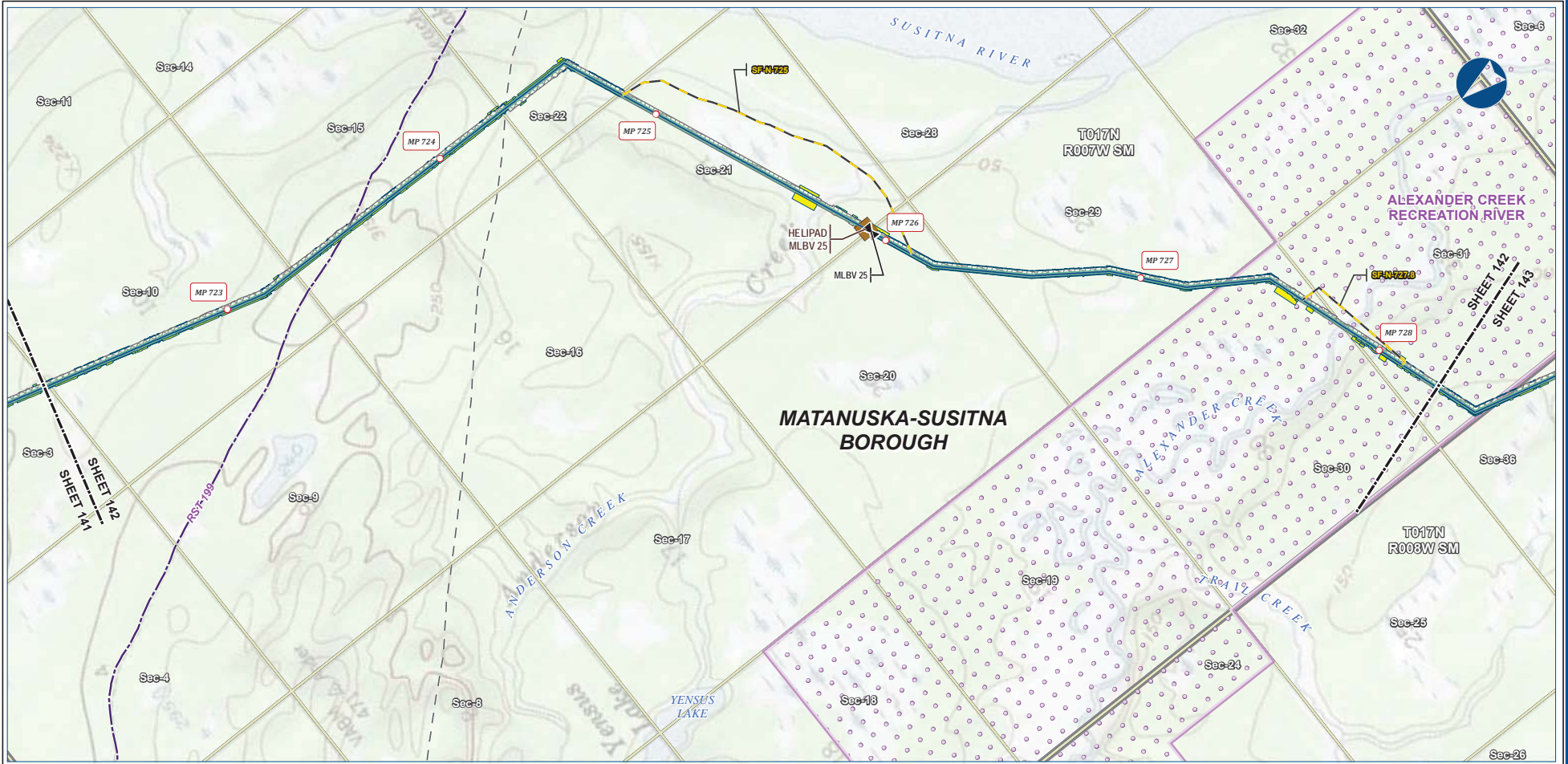
DISCLAIMER

The information contained herein is for informational or planning purposes only. It does not nor should it be deemed to be an offer, request or proposals for rights or occupation of any kind. The Alaska LNG Project Participants and their respective officers, employees and agents, make no warranty, implied or otherwise, nor accept any liability, as to the accuracy or completeness of the information contained in these documents, drawings or electronic files. Do not remove or delete this note from document, drawing or electronic file.

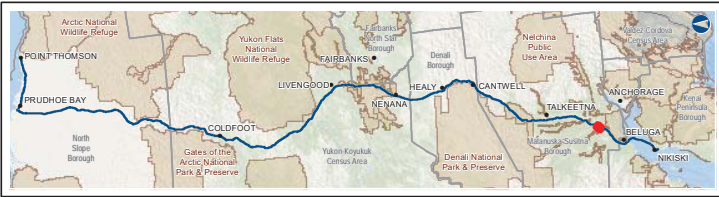
Alaska LNG Project

PRELIMINARY FACILITY LOCATIONS - MAINLINE REV C2 ROUTE

ALASKA LNG



B-149



PIPELINE		EXISTING FEATURES	
	Mainline Pipeline		Permanent ROW
	Access Road - Gravel		Construction ROW
	Mainline Blockvalve		ATWS
	Helipad		Revised Statute 2477 Trail
			Off Road Trails
			Conservation Lands
			Section
			Township

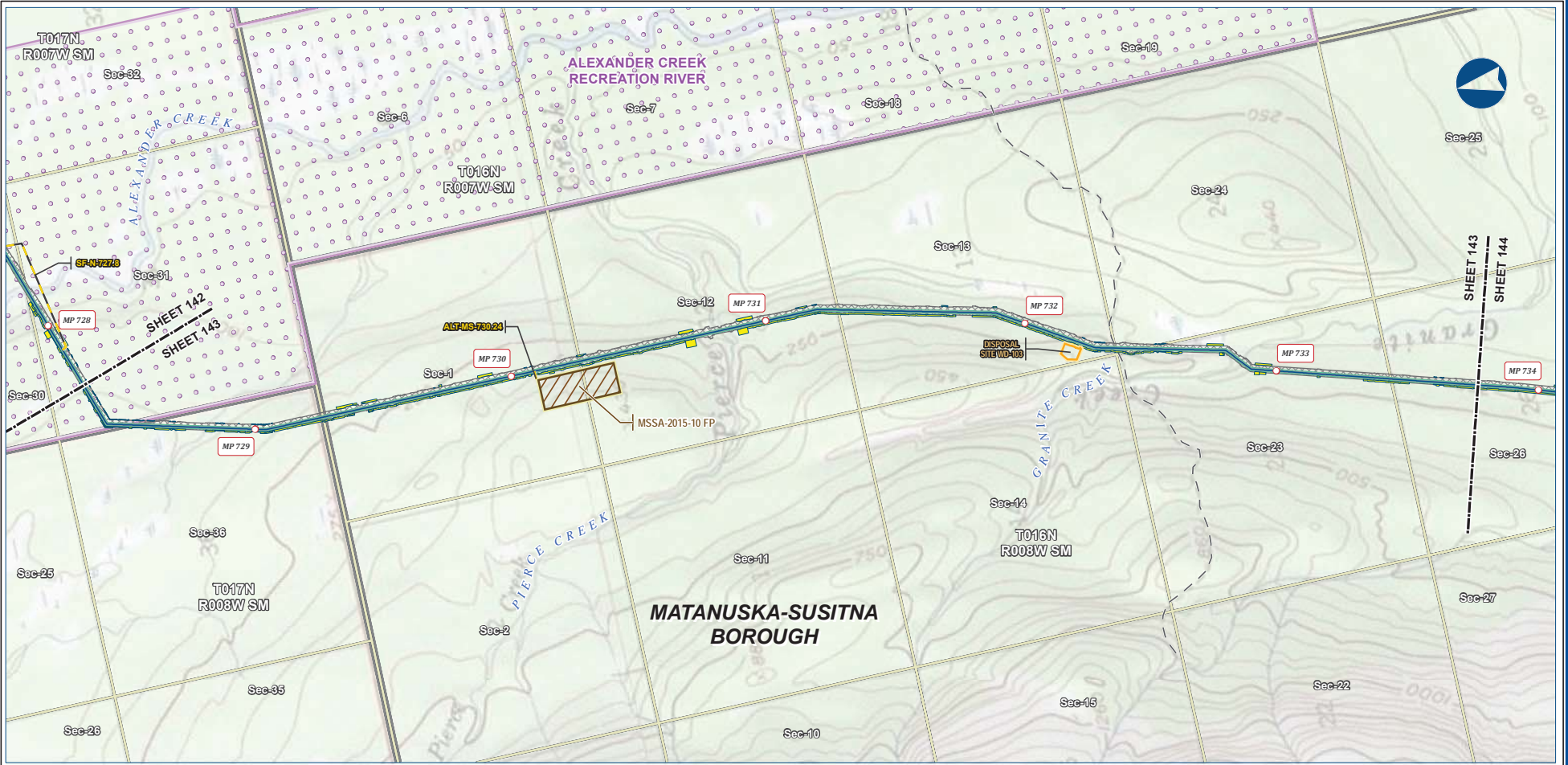
ALASKA LNG PROJECT Preliminary Facility Locations Mainline Rev C2 Route			
BOROUGH:	MATANUSKA-SUSITNA	DRAWN BY:	AGDC
STATE:	ALASKA	CHECKED BY:	
REV. NO.:	REVISION	DATE	
A	ISSUED FOR REVIEW	2017-03-10	
PRELIMINARY			
1:24,000			
DATE:	2017-03-10	PROJECTION:	NAD83 NRSR2007 ALASKAZONE4 FTUS 54392

DISCLAIMER

The information contained herein is for informational or planning purposes only. It does not nor should it be deemed to be an offer, request or proposals for rights or occupation of any kind. The Alaska LNG Project Participants and their respective officers, employees and agents, make no warranty, implied or otherwise, nor accept any liability, as to the accuracy or completeness of the information contained in these documents, drawings or electronic files. Do not remove or delete this note from document, drawing or electronic file.

Alaska LNG Project

PRELIMINARY FACILITY LOCATIONS - MAINLINE REV C2 ROUTE



B-150



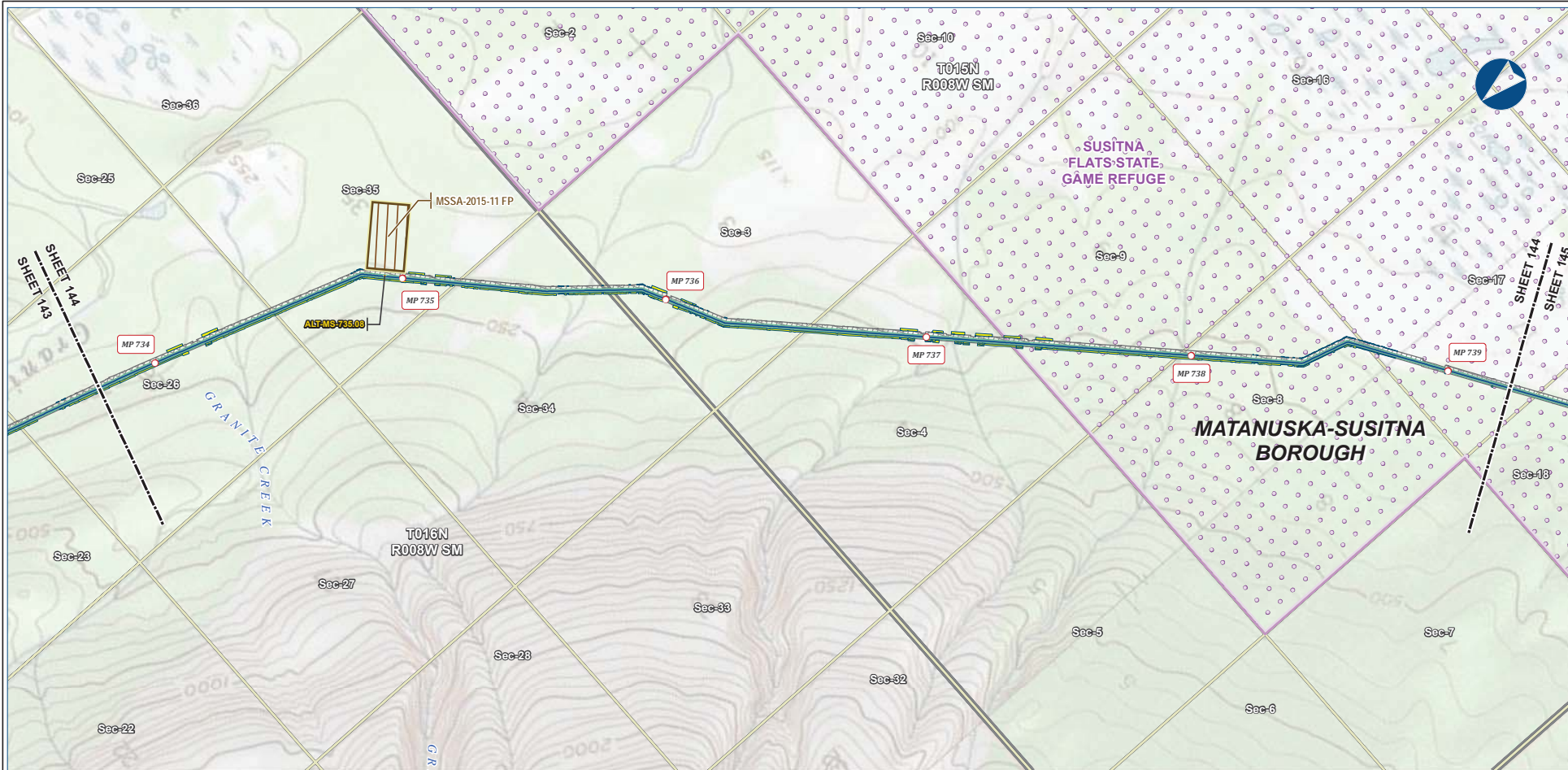
Legend		EXISTING FEATURES	
Mainline Pipeline	Permanent ROW	Existing Roads	Conservation Lands
Access Road - Gravel	Construction ROW	Off Road Trails	Section
Disposal Site	ATWS	Material Site Study Area (MSSA)	Township

ALASKA LNG PROJECT Preliminary Facility Locations Mainline Rev C2 Route			
BOROUGH:	MATANUSKA-SUSITNA	DRAWN BY:	AGDC
STATE:	ALASKA	CHECKED BY:	
REV. NO.:	REVISION	DATE	
A	ISSUED FOR REVIEW	2017-03-10	
PRELIMINARY			
1:24,000			
DATE:	2017-03-10	PROJECTION:	NAD83 NSRS2007 ALASKAZONE4 FTUS 54392

DISCLAIMER
The information contained herein is for informational or planning purposes only. It does not nor should it be deemed to be an offer, request or proposals for rights or occupation of any kind. The Alaska LNG Project Participants and their respective officers, employees and agents, make no warranty, implied or otherwise, nor accept any liability, as to the accuracy or completeness of the information contained in these documents, drawings or electronic files. Do not remove or delete this note from document, drawing or electronic file.

PRELIMINARY FACILITY LOCATIONS - MAINLINE REV C2 ROUTE

ALASKA LNG



B-151



Legend

Mainline Pipeline	Permanent ROW	Existing Roads
Access Road - Gravel	Construction ROW	Conservation Lands
	ATWS	Section
	Material Site Study Area (MSSA)	Township

ALASKA LNG PROJECT
Preliminary Facility Locations
Mainline Rev C2 Route

BOROUGH:	MATANUSKA-SUSITNA	DRAWN BY:	AGDC
STATE:	ALASKA	CHECKED BY:	
REV. NO.:	REVISION	DATE	
A	ISSUED FOR REVIEW	2017-03-10	
PRELIMINARY			
1:24,000			
DATE:	2017-03-10	PROJECTION:	NAD83 NSRS2007 ALASKAZONE4 FTUS 54392

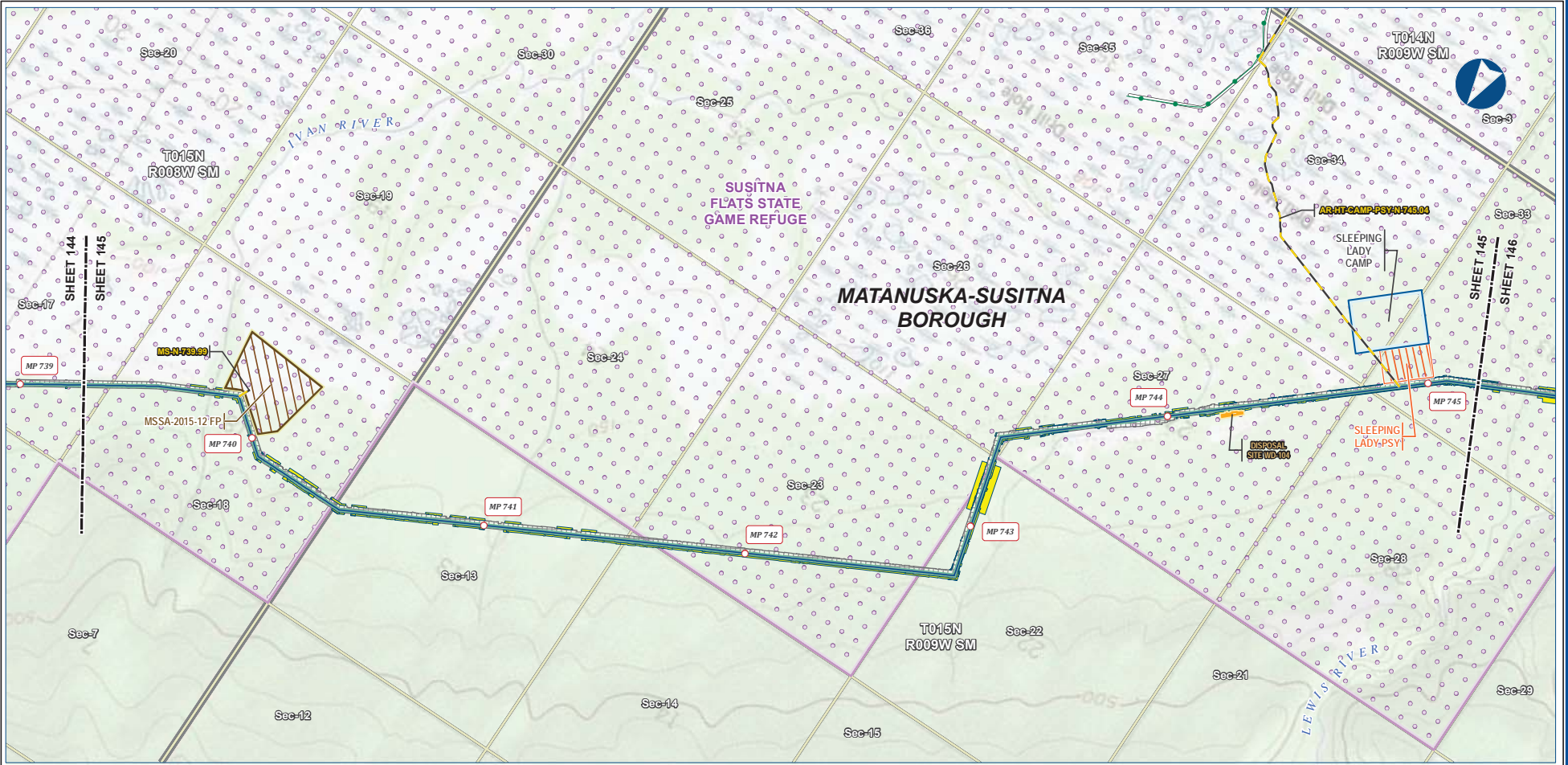
DISCLAIMER

The information contained herein is for informational or planning purposes only. It does not nor should it be deemed to be an offer, request or proposals for rights or occupation of any kind. The Alaska LNG Project Participants and their respective officers, employees and agents, make no warranty, implied or otherwise, nor accept any liability, as to the accuracy or completeness of the information contained in these documents, drawings or electronic files. Do not remove or delete this note from document, drawing or electronic file.

Alaska LNG Project

PRELIMINARY FACILITY LOCATIONS - MAINLINE REV C2 ROUTE

ALASKA LNG



B-152



Legend		EXISTING FEATURES	
Permanent ROW	Mainline Pipeline	Existing Roads	Existing Pipeline
Construction ROW	ATWS	Conservation Lands	Section
Off ROW Camp	Pipe Storage Yard (PSY)	Township	
Disposal Site	Material Site Study Area (MSSA)		

ALASKA LNG PROJECT			
Preliminary Facility Locations			
Mainline Rev C2 Route			
BOROUGH:	MATANUSKA-SUSITNA	DRAWN BY:	AGDC
STATE:	ALASKA	CHECKED BY:	
REV. NO.:	REVISION	DATE	
A	ISSUED FOR REVIEW	2017-03-10	
PRELIMINARY			
1:24,000			
0 1/4 1/2 3/4 1 Mile			
DATE:	2017-03-10	PROJECTION:	NAD83 NSRS2007 ALASKAZONE4 FTUS S4392

DISCLAIMER

The information contained herein is for informational or planning purposes only. It does not nor should it be deemed to be an offer, request or proposals for rights or occupation of any kind. The Alaska LNG Project Participants and their respective officers, employees and agents, make no warranty, implied or otherwise, nor accept any liability, as to the accuracy or completeness of the information contained in these documents, drawings or electronic files. Do not remove or delete this note from document, drawing or electronic file.

Alaska LNG Project

PRELIMINARY FACILITY LOCATIONS - MAINLINE REV C2 ROUTE

ALASKA LNG



B-153



Legend		EXISTING FEATURES	
Mainline Pipeline	Permanent ROW	Existing Roads	Existing Pipeline
Access Road - Gravel	Construction ROW	Conservation Lands	Section
Mainline Blockvalve	ATWS	Camp	Township
	Compressor Station	Oil ROW Camp	
	Pipe Storage Yard (PSY)	Disposal Site	
	Disposal Site	Material Site Study Area (MSSA)	

ALASKA LNG PROJECT			
Preliminary Facility Locations			
Mainline Rev C2 Route			
BOROUGH:	MATANUSKA-SUSITNA	DRAWN BY:	AGDC
STATE:	ALASKA	CHECKED BY:	
REV. NO.:	REVISION	DATE	
A	ISSUED FOR REVIEW	2017-03-10	
PRELIMINARY			
1:24,000			
DATE: 2017-03-10	PROJECTION: NAD83 NSRS2007 ALASKAZONE4 FTUS 54392	DWG: RR-1_APPENDIX_A1_MAINLINE_TOPO_REV_C2_CL	SHEET: 146

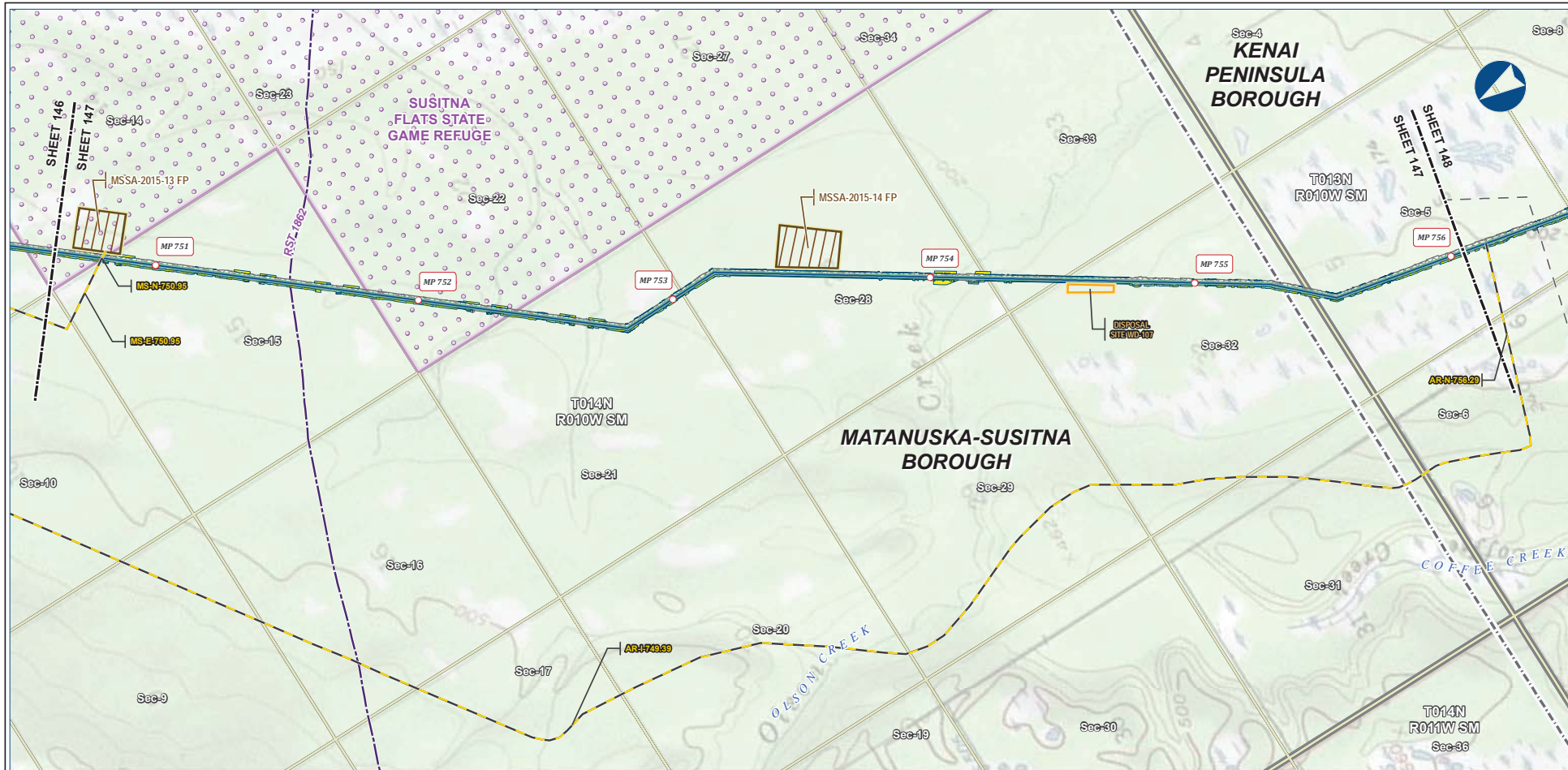
DISCLAIMER

The information contained herein is for informational or planning purposes only. It does not nor should it be deemed to be an offer, request or proposals for rights or occupation of any kind. The Alaska LNG Project Participants and their respective officers, employees and agents, make no warranty, implied or otherwise, nor accept any liability, as to the accuracy or completeness of the information contained in these documents, drawings or electronic files. Do not remove or delete this note from document, drawing or electronic file.

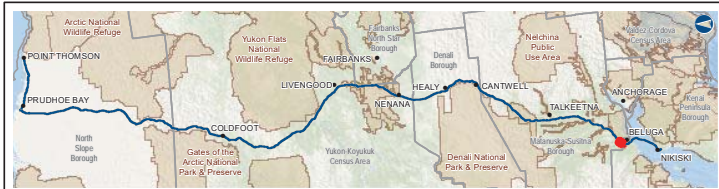
Alaska LNG Project

PRELIMINARY FACILITY LOCATIONS - MAINLINE REV C2 ROUTE

ALASKA LNG



B-154



Legend		EXISTING FEATURES	
	Mainline Pipeline		Existing Roads
	Construction ROW		Revised Statute 2477 Trail
	Access Road - Gravel		Off Road Trails
	ATWS		Borough / Consus Area
	Disposal Site		Conservation Lands
	Material Site Study Area (MSSA)		Section
			Township

ALASKA LNG PROJECT Preliminary Facility Locations Mainline Rev C2 Route			
BOROUGH:	MATANUSKA-SUSITNA	DRAWN BY:	AGDC
STATE:	ALASKA	CHECKED BY:	
REV. NO.:	REVISION	DATE	
A	ISSUED FOR REVIEW	2017-03-10	
PRELIMINARY			
1:24,000			
DATE:	2017-03-10	PROJECTION:	NAD83 NRSR2007 ALASKAZONE4 FTUS 54392

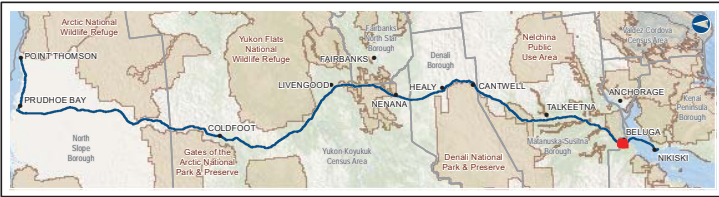
DISCLAIMER

The information contained herein is for informational or planning purposes only. It does not nor should it be deemed to be an offer, request or proposals for rights or occupation of any kind. The Alaska LNG Project Participants and their respective officers, employees and agents, make no warranty, implied or otherwise, nor accept any liability, as to the accuracy or completeness of the information contained in these documents, drawings or electronic files. Do not remove or delete this note from document, drawing or electronic file.

Alaska LNG Project



B-155

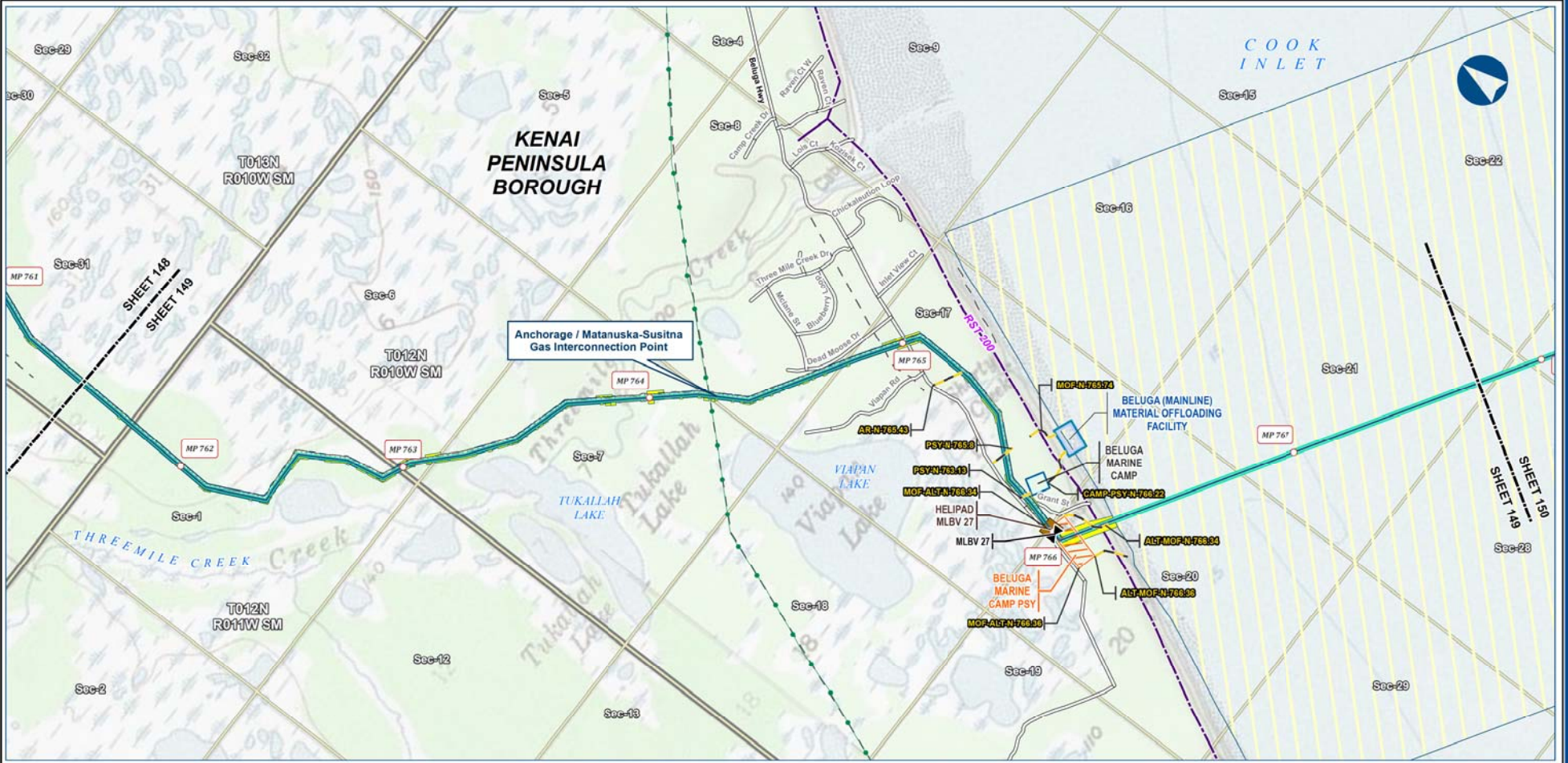


Legend		EXISTING FEATURES	
Pipeline	Permanent ROW	Existing Roads	Section
Mainline Pipeline	Construction ROW	Off Road Trails	Township
Access Road - Gravel	ATWS	Material Site Study Area (MSSA)	
Disposal Site			
Material Site Study Area (MSSA)			

ALASKA LNG PROJECT			
Preliminary Facility Locations			
Mainline Rev C2 Route			
BOROUGH:	KENAI PENINSULA	DRAWN BY:	AGDC
STATE:	ALASKA	CHECKED BY:	
REV. NO.:	REVISION	DATE	
A	ISSUED FOR REVIEW	2017-03-10	
PRELIMINARY			
1:24,000			
DATE:	2017-03-10	PROJECTION:	NAD83 NRSR2007 ALASKAZONE4 FTUS 54392

DISCLAIMER

The information contained herein is for informational or planning purposes only. It does not nor should it be deemed to be an offer, request or proposals for rights or occupation of any kind. The Alaska LNG Project Participants and their respective officers, employees and agents, make no warranty, implied or otherwise, nor accept any liability, as to the accuracy or completeness of the information contained in these documents, drawings or electronic files. Do not remove or delete this note from document, drawing or electronic file.



Legend		EXISTING FEATURES	
Permanent ROW	Alaska LNG Rev C2 Route	Existing Roads	Revised Statute 2477 Trail
Access Road - Gravel	Construction ROW	Off Road Trails	Existing Pipeline
Manline Blockvalve	ATWS	Section	Township
Lay Barge Anchor Spread Area	Oil ROW Camp		
Oil ROW Camp	Pipe Storage Yard (PSY)		
Helipad	Material Offloading Facility (MOF)		

ALASKA LNG PROJECT Preliminary Facility Locations Mainline Rev C2 Route			
BOROUGH:	KENAI PENINSULA	DRAWN BY:	AGDC
STATE:	ALASKA	CHECKED BY:	
REV. NO.:	REVISION	DATE	
B	BELUGA (MAINLINE) MOF	2019-07-09	
PRELIMINARY			
1:24,000			
DATE:	2019-07-09	PROJECTION:	NAD83 NRSR2007 ALASKAZONE4 FTUS 54392

DISCLAIMER

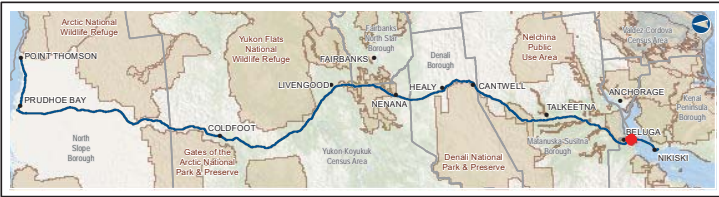
The information contained herein is for informational or planning purposes only. It does not nor should it be deemed to be an offer, request or proposals for rights or occupation of any kind. The Alaska LNG Project Participants and their respective officers, employees and agents, make no warranty, implied or otherwise, nor accept any liability, as to the accuracy or completeness of the information contained in these documents, drawings or electronic files. Do not remove or delete this note from document, drawing or electronic file.

PRELIMINARY FACILITY LOCATIONS - MAINLINE REV C2 ROUTE

ALASKA LNG



B-157



Legend

Mainline Pipeline	Permanent ROW	Existing Roads
Construction ROW	ATWS	Section
Lay Barge Anchor Spread Area	Township	

ALASKA LNG PROJECT
Preliminary Facility Locations
Mainline Rev C2 Route

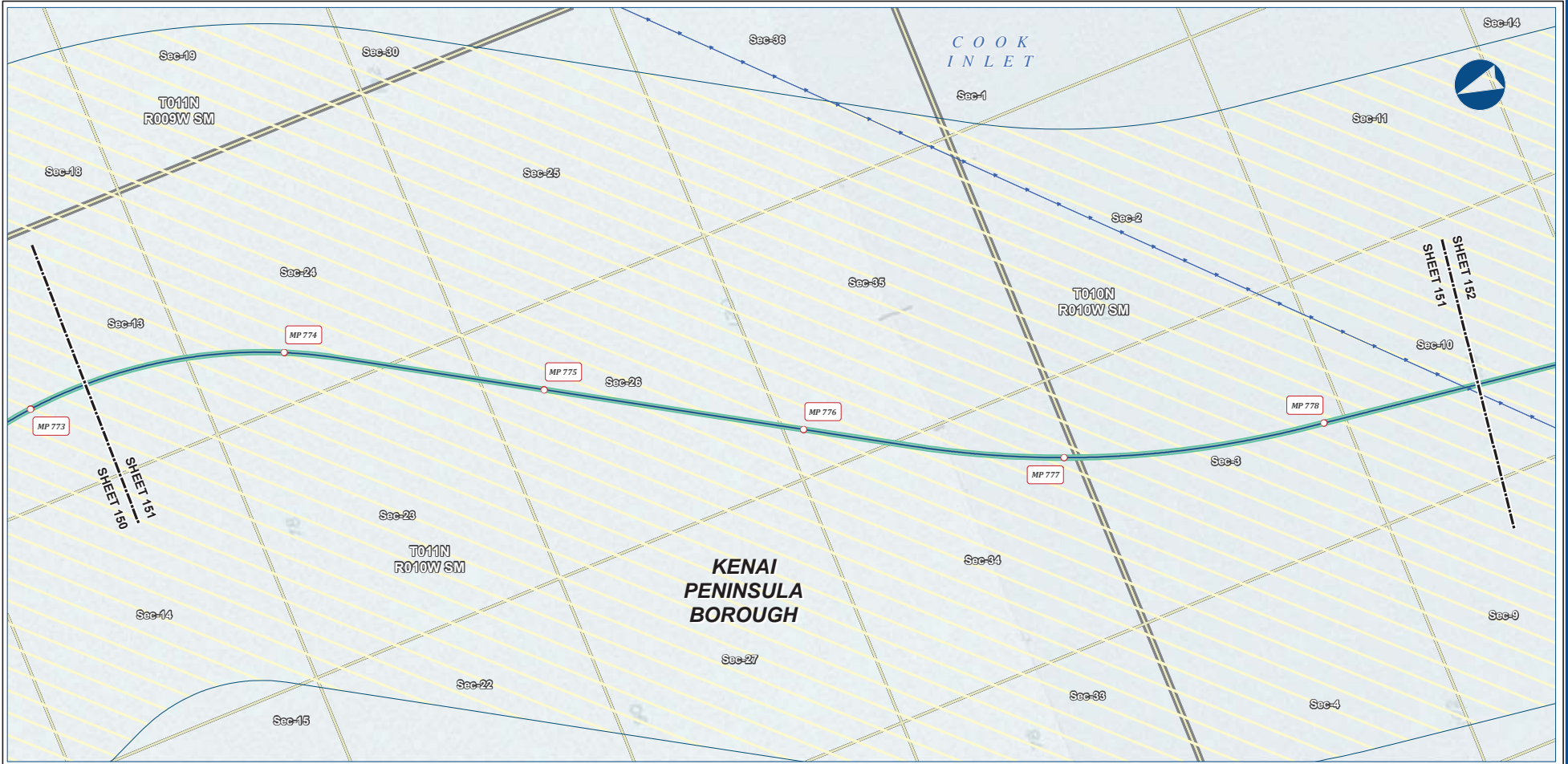
BOROUGH:	KENAI PENINSULA	DRAWN BY:	AGDC
STATE:	ALASKA	CHECKED BY:	
REV. NO.:	A	REVISION	ISSUED FOR REVIEW
		DATE	2017-03-10
PRELIMINARY			
1:24,000			
0 5 10 Miles			
DATE:	2017-03-10	PROJECTION:	NAD83 NSRS2007 ALASKAZONE4 FTUS 54392

DISCLAIMER

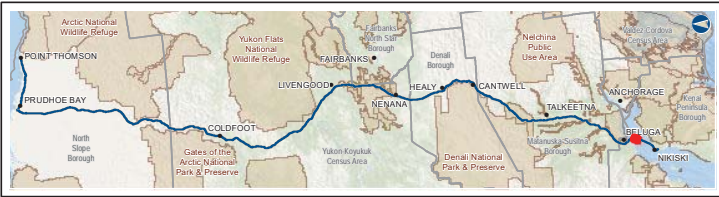
The information contained herein is for informational or planning purposes only. It does not nor should it be deemed to be an offer, request or proposals for rights or occupation of any kind. The Alaska LNG Project Participants and their respective officers, employees and agents, make no warranty, implied or otherwise, nor accept any liability, as to the accuracy or completeness of the information contained in these documents, drawings or electronic files. Do not remove or delete this note from document, drawing or electronic file.

DWG: RR_1_APPENDIX_A1_MAINLINE_TOPO_REV_C2_CL SHEET: 150

Alaska LNG Project



B-158



Legend

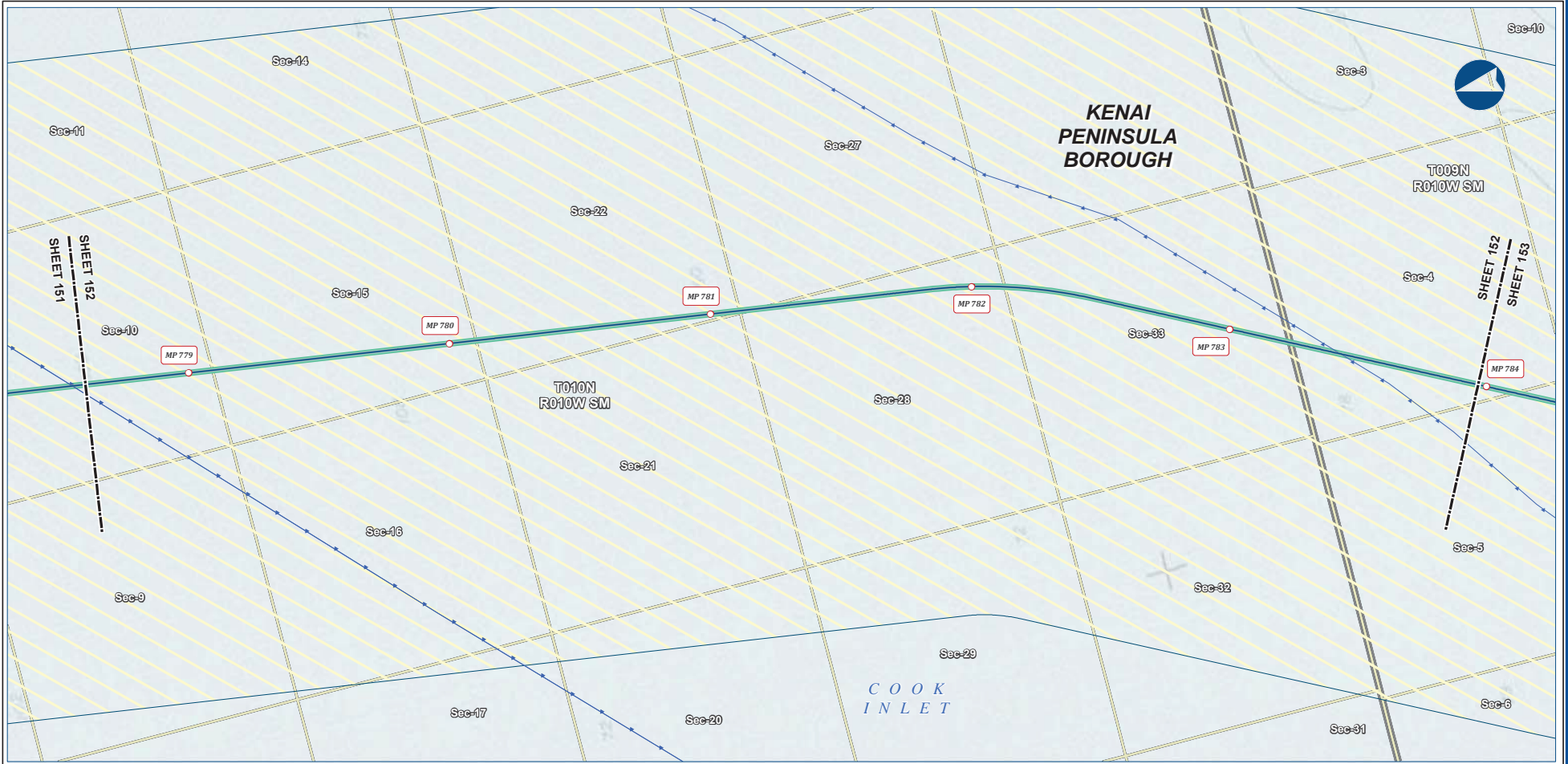
Permanent ROW	Construction ROW	Existing Roads
ATWS	Submarine Cable	Section
Lay Barge Anchor Spread Area	Township	

ALASKA LNG PROJECT
Preliminary Facility Locations
Mainline Rev C2 Route

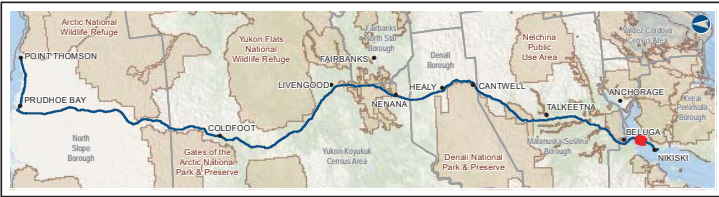
BOROUGH:	KENAI PENINSULA	DRAWN BY:	AGDC
STATE:	ALASKA	CHECKED BY:	
REV. NO.:	REVISION	DATE	
A	ISSUED FOR REVIEW	2017-03-10	
PRELIMINARY			
1:24,000			
DATE:	2017-03-10	PROJECTION:	NAD83 NSRS2007 ALASKAZONE4 FTUS 54392

DISCLAIMER

The information contained herein is for informational or planning purposes only. It does not nor should it be deemed to be an offer, request or proposals for rights or occupation of any kind. The Alaska LNG Project Participants and their respective officers, employees and agents, make no warranty, implied or otherwise, nor accept any liability, as to the accuracy or completeness of the information contained in these documents, drawings or electronic files. Do not remove or delete this note from document, drawing or electronic file.



B-159



Legend

Mainline Pipeline	Permanent ROW	Existing Roads
Construction ROW	ATWS	Submarine Cable
Lay Barge Anchor Spread Area		Section
		Township

EXISTING FEATURES

- Existing Roads
- Submarine Cable
- Section
- Township

ALASKA LNG PROJECT
Preliminary Facility Locations
Mainline Rev C2 Route

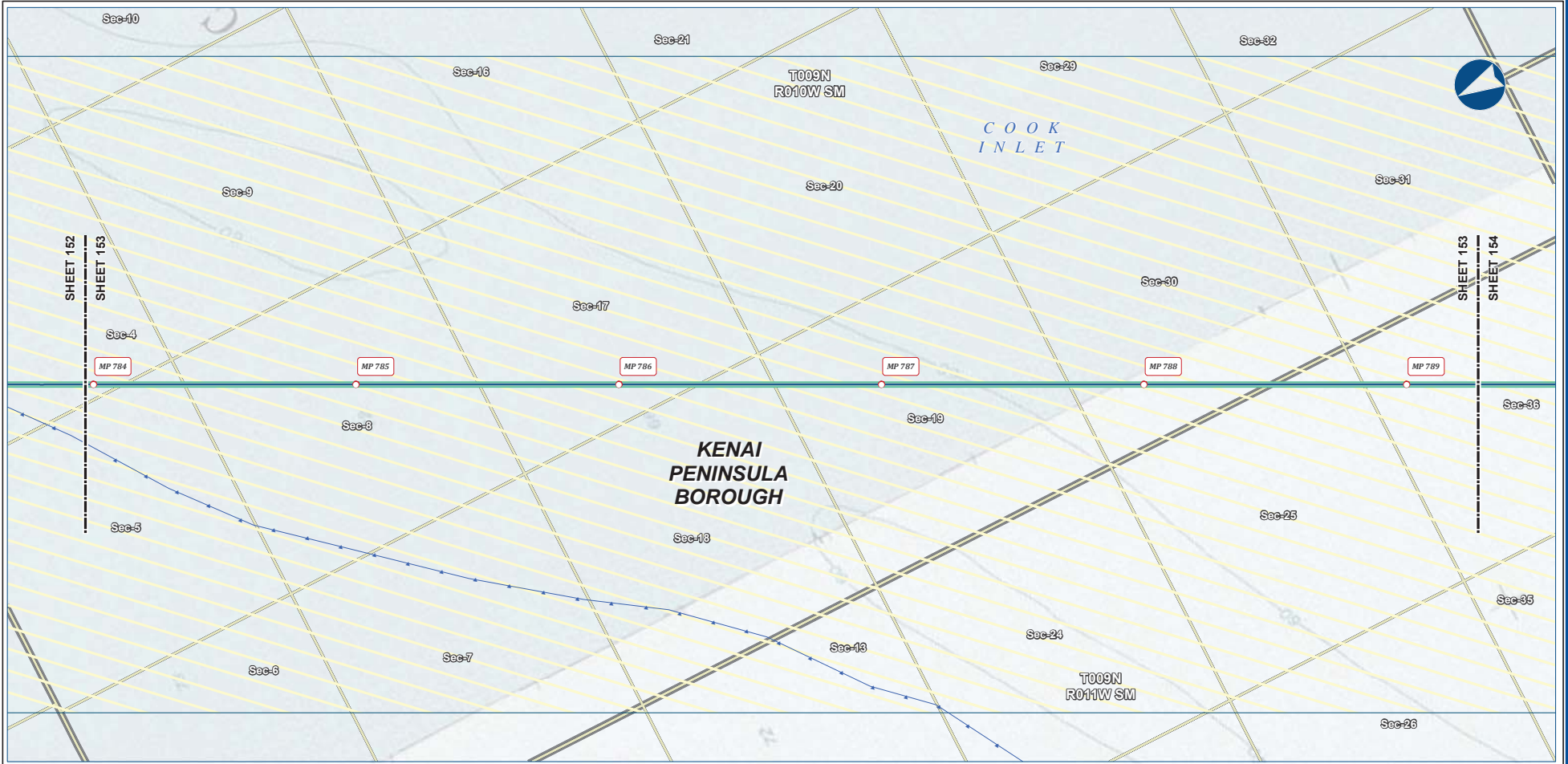
BOROUGH: KENAI PENINSULA	DRAWN BY: AGDC
STATE: ALASKA	CHECKED BY:
REV. NO.:	REVISION DATE
A	ISSUED FOR REVIEW 2017-03-10
PRELIMINARY	
1:24,000 0 5 10 Miles	
DATE: 2017-03-10	PROJECTION: NAD83 NSRS2007 ALASKAZONE4 FTUS S4392

DISCLAIMER

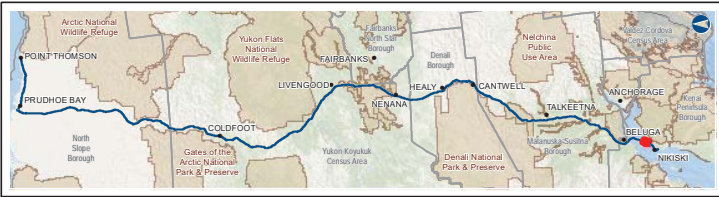
The information contained herein is for informational or planning purposes only. It does not nor should it be deemed to be an offer, request or proposals for rights or occupation of any kind. The Alaska LNG Project Participants and their respective officers, employees and agents, make no warranty, implied or otherwise, nor accept any liability, as to the accuracy or completeness of the information contained in these documents, drawings or electronic files. Do not remove or delete this note from document, drawing or electronic file.

PRELIMINARY FACILITY LOCATIONS - MAINLINE REV C2 ROUTE

ALASKA LNG



B-160



Legend

Mainline Pipeline	Permanent ROW	Existing Roads
Construction ROW	Submarine Cable	Section
ATWS	Lay Barge Anchor Spread Area	Township

ALASKA LNG PROJECT
Preliminary Facility Locations
Mainline Rev C2 Route

BOROUGH:	KENAI PENINSULA	DRAWN BY:	AGDC
STATE:	ALASKA	CHECKED BY:	
REV. NO.:	REVISION	DATE	
A	ISSUED FOR REVIEW	2017-03-10	
PRELIMINARY			
1:24,000			
DATE:	2017-03-10	PROJECTION:	NAD83 NSRS2007 ALASKAZONE4 FTUS 54392

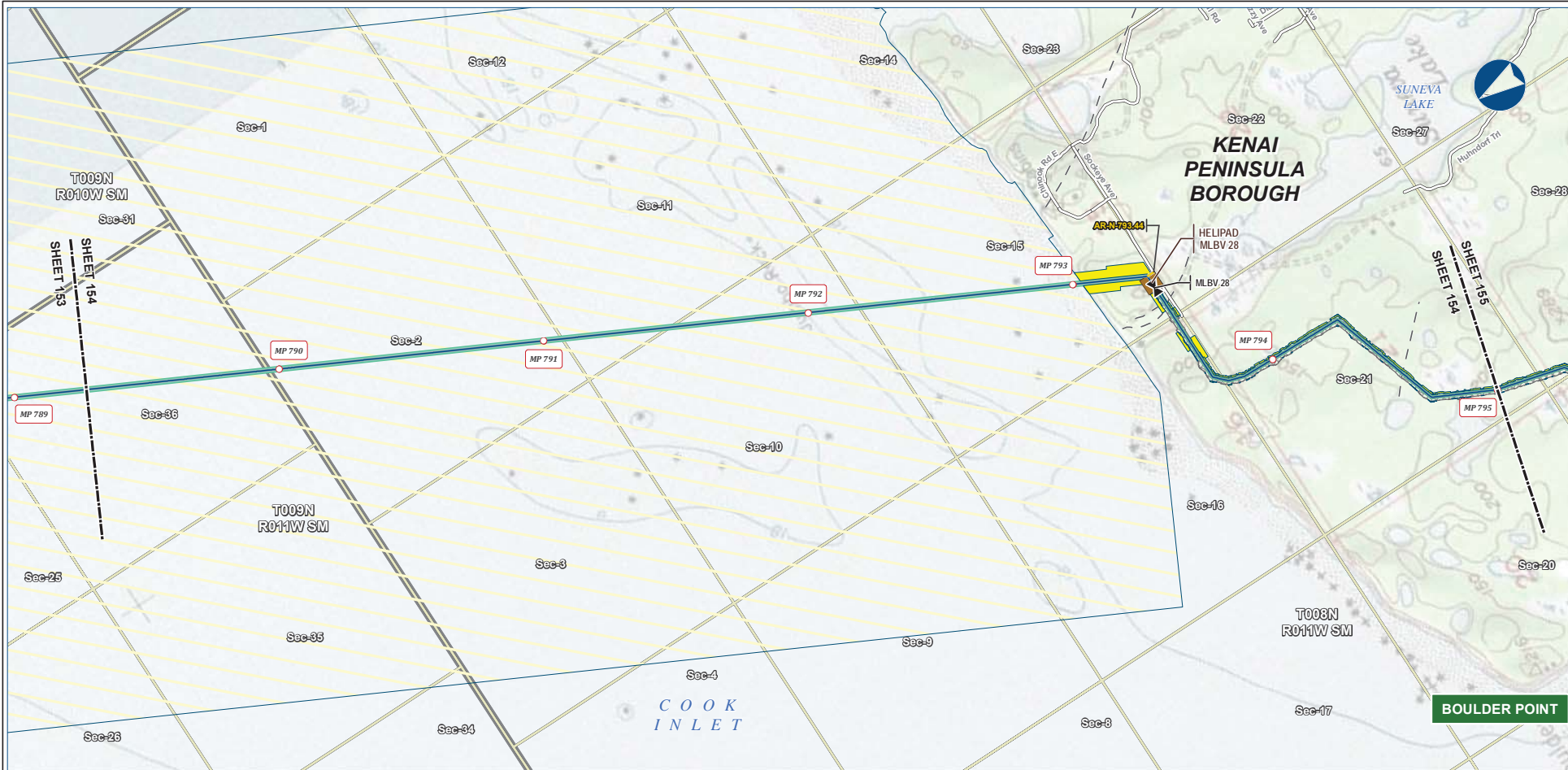
DISCLAIMER

The information contained herein is for informational or planning purposes only. It does not nor should it be deemed to be an offer, request or proposals for rights or occupation of any kind. The Alaska LNG Project Participants and their respective officers, employees and agents, make no warranty, implied or otherwise, nor accept any liability, as to the accuracy or completeness of the information contained in these documents, drawings or electronic files. Do not remove or delete this note from document, drawing or electronic file.

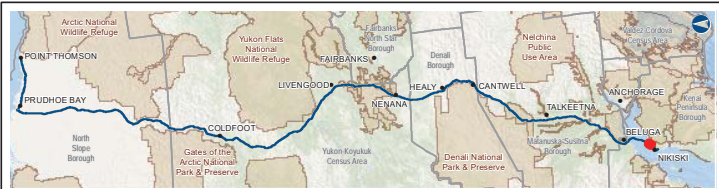
Alaska LNG Project

PRELIMINARY FACILITY LOCATIONS - MAINLINE REV C2 ROUTE

ALASKA LNG



B-161



Legend		
PIPELINE	Permanent ROW	EXISTING FEATURES
Mainline Pipeline	Construction ROW	Existing Roads
Access Road - Gravel	ATWS	Off Road Trails
Mainline Blockvale	Lay Barge Anchor Spread Area	Section
Helipad		Township

ALASKA LNG PROJECT			
Preliminary Facility Locations			
Mainline Rev C2 Route			
BOROUGH:	KENAI PENINSULA	DRAWN BY:	AGDC
STATE:	ALASKA	CHECKED BY:	
REV. NO.:	REVISION	DATE	
A	ISSUED FOR REVIEW	2017-03-10	
PRELIMINARY			
1:24,000			
DATE:	2017-03-10	PROJECTION:	NAD83 NSRS2007 ALASKAZONE4 FTUS 54392

DISCLAIMER

The information contained herein is for informational or planning purposes only. It does not nor should it be deemed to be an offer, request or proposals for rights or occupation of any kind. The Alaska LNG Project Participants and their respective officers, employees and agents, make no warranty, implied or otherwise, nor accept any liability, as to the accuracy or completeness of the information contained in these documents, drawings or electronic files. Do not remove or delete this note from document, drawing or electronic file.

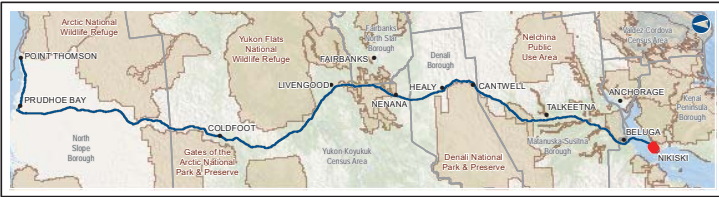
Alaska LNG Project

PRELIMINARY FACILITY LOCATIONS - MAINLINE REV C2 ROUTE

ALASKA LNG



B-162



Legend		EXISTING FEATURES	
Permanent ROW	Mainline Pipeline	Existing Roads	Existing Pipeline
Construction ROW	ATWS	Off Road Trails	Overhead Powerline
Helipad		Submarine Cable	Alaska DOT Place Names
		Section	Township

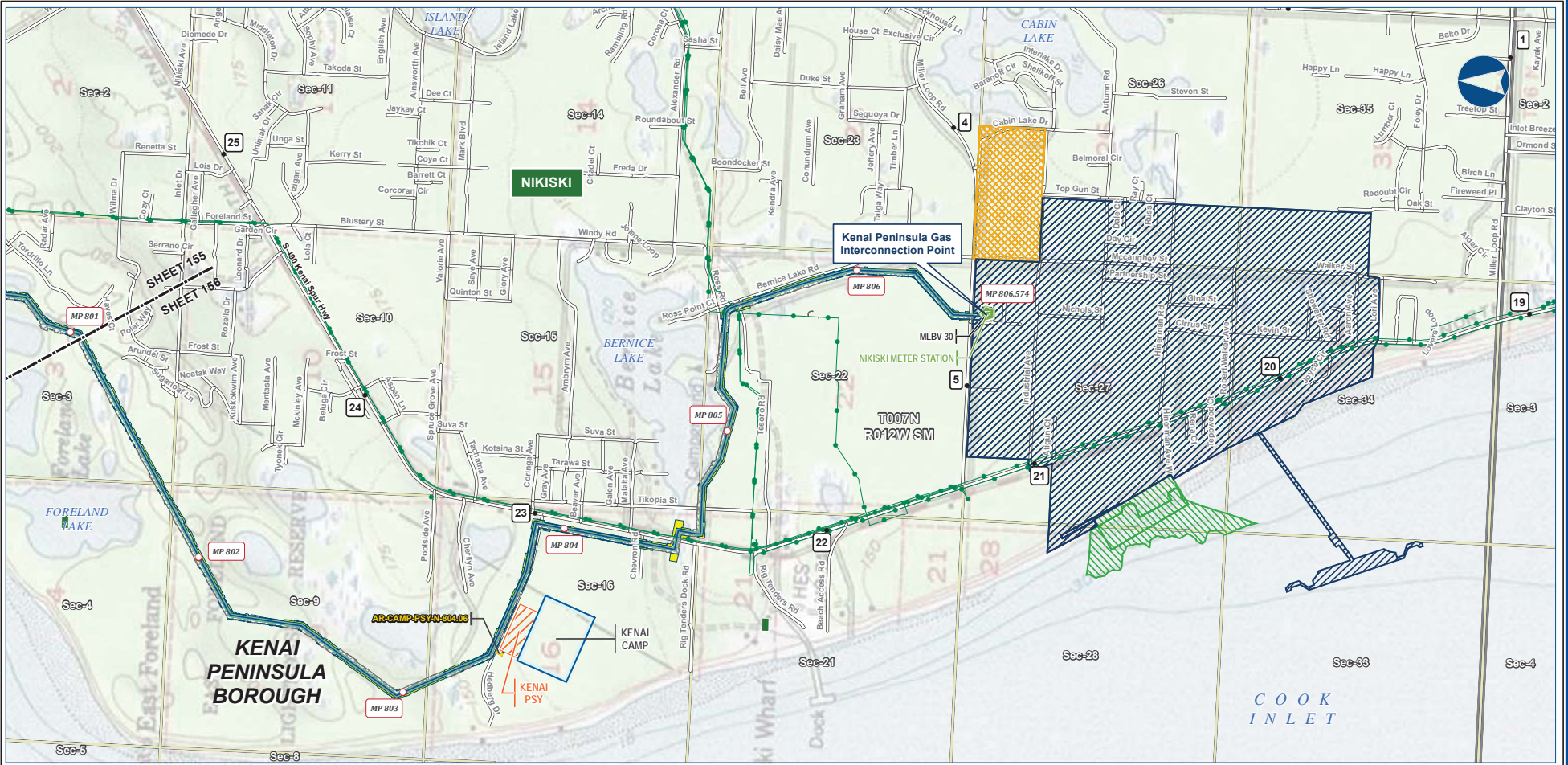
ALASKA LNG PROJECT Preliminary Facility Locations Mainline Rev C2 Route			
BOROUGH:	KENAI PENINSULA	DRAWN BY:	AGDC
STATE:	ALASKA	CHECKED BY:	
REV. NO.:	REVISION	DATE	
A	ISSUED FOR REVIEW	2017-03-10	
PRELIMINARY			
1:24,000			
DATE:	2017-03-10	PROJECTION:	NAD83 NSRS2007 ALASKAZONE4 FTUS S4392

DISCLAIMER

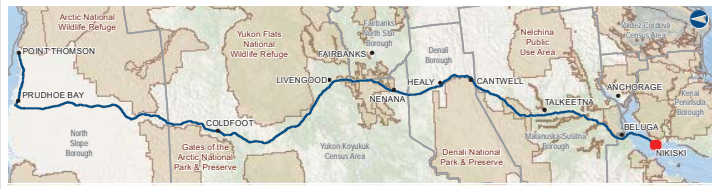
The information contained herein is for informational or planning purposes only. It does not nor should it be deemed to be an offer, request or proposals for rights or occupation of any kind. The Alaska LNG Project Participants and their respective officers, employees and agents, make no warranty, implied or otherwise, nor accept any liability, as to the accuracy or completeness of the information contained in these documents, drawings or electronic files. Do not remove or delete this note from document, drawing or electronic file.

Alaska LNG Project

PRELIMINARY FACILITY LOCATIONS - MAINLINE REV C2 ROUTE



B-163



Alaska LNG Project

Legend

LNG Liquefaction Facility

- Permanent (Green outline)
- Construction (Blue outline)
- Temporary Construction Camp (Orange outline)

PIPELINE

- Mainline Pipeline (Blue line)
- Access Road - Gravel (Yellow line)
- Meter Station (Green circle)
- Mainline Blockvalve (Black triangle)

EXISTING FEATURES

- Existing Roads (Grey line)
- Construction ROW (Blue hatched area)
- ATWS (Yellow hatched area)
- Off Road Trails (Dashed line)
- Existing Pipeline (Green line)
- Alaska DOT Place Names (Green rectangle)
- Section (Yellow rectangle)
- Township (Grey rectangle)

ALASKA LNG PROJECT
Preliminary Facility Locations
Mainline Rev C2 Route

BOROUGH:	KENAI PENINSULA	DRAWN BY:	AGDC
STATE:	ALASKA	CHECKED BY:	
REV. NO.:	REVISION	DATE	
A	ISSUED FOR REVIEW	2017-03-24	
PRELIMINARY			
1:24,000			
DATE:	2017-03-24	PRODUCTION:	NAD83 NSRS2007 ALASKAZONE4 FTUS 54392

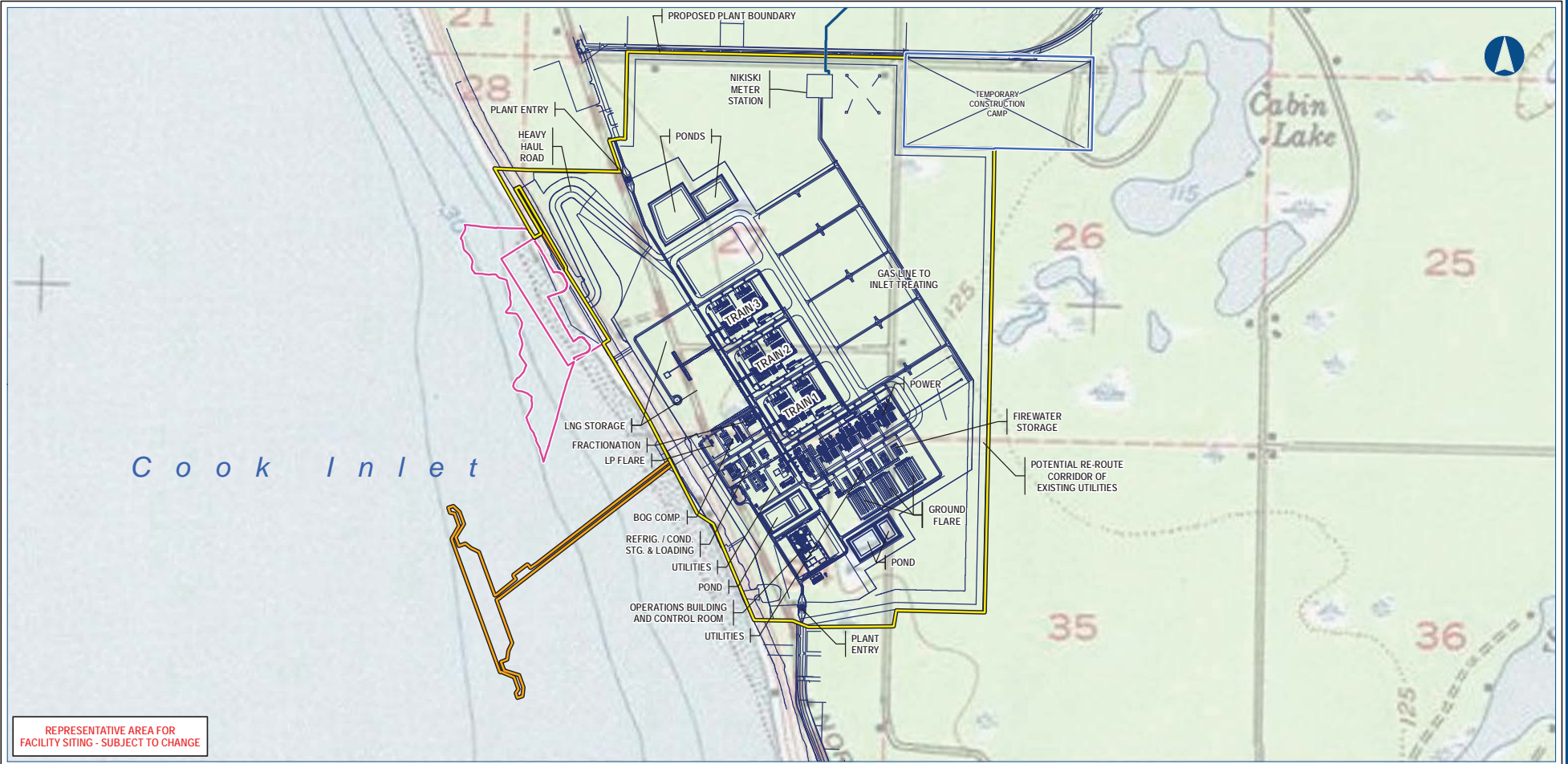
DISCLAIMER

The information contained herein is for informational or planning purposes only. It does not nor should it be deemed to be an offer, request or proposals for rights or occupation of any kind. The Alaska LNG Project Participants and their respective officers, employees and agents, make no warranty, implied or otherwise, nor accept any liability, as to the accuracy or completeness of the information contained in these documents, drawings or electronic files. Do not remove or delete this note from document, drawing or electronic file.

DWG: RR-1 APPENDIX_A1_MAINLINE_TOPO_REV_C2_CL SHEET: 156

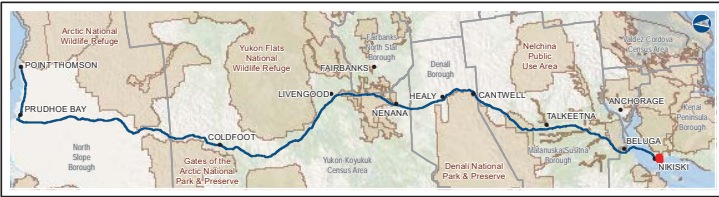
Liquefaction Facilities

PROPOSED ABOVEGROUND FACILITY - LIQUEFACTION FACILITY - FIGURE B1-2



REPRESENTATIVE AREA FOR FACILITY SITING - SUBJECT TO CHANGE

B-164



Alaska LNG Project

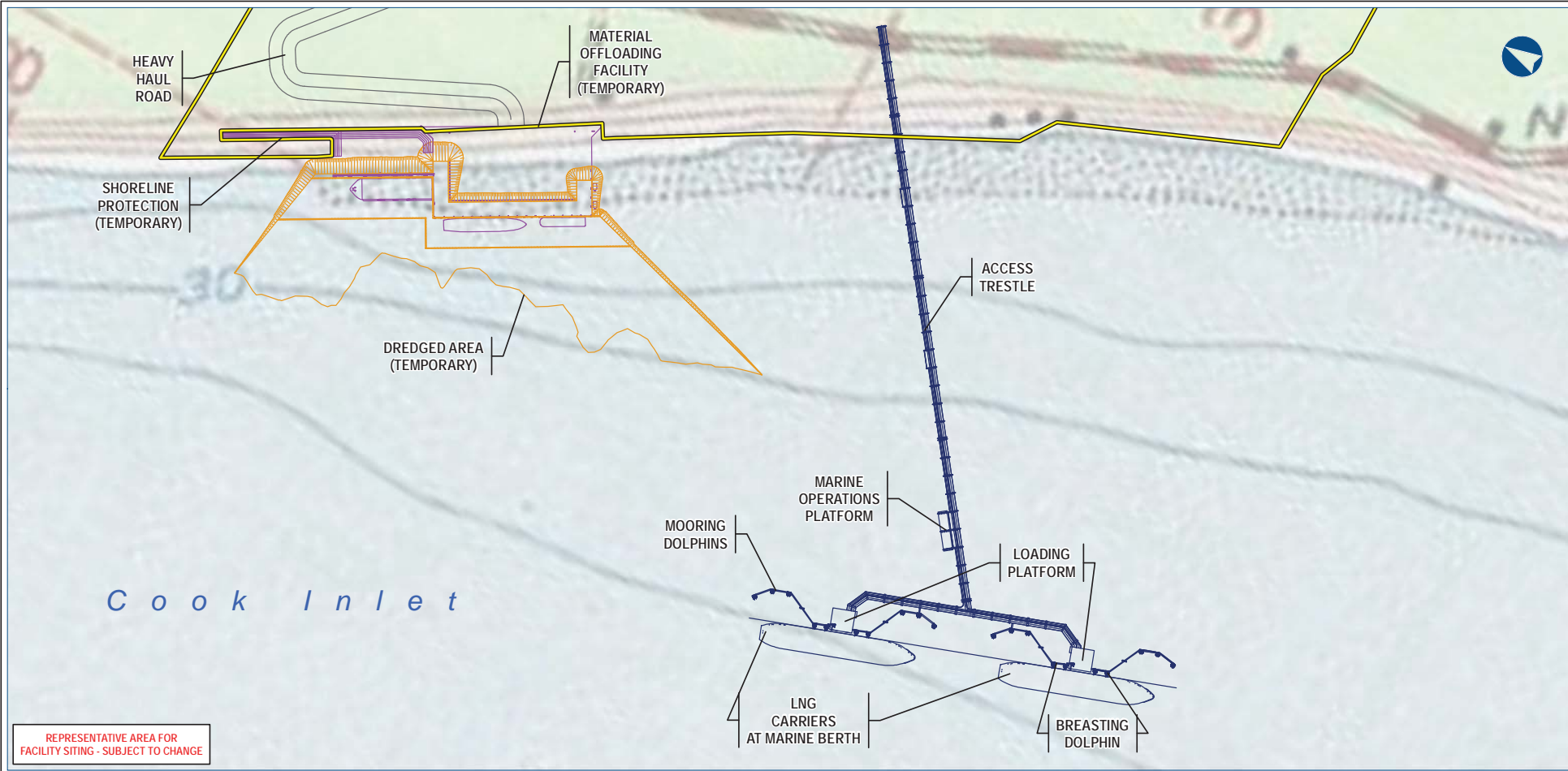
- Legend**
- Mainline Pipeline
 - LNG Plant Generalized Plot Plan Features
 - ▭ LNG Plant Operations Area
 - ▭ LNG Plant Construction Camp
 - ▭ Marine Terminal Footprint Operations Area
 - ▭ Temporary MOF and MOF Dredging Area

ALASKA LNG PROJECT Proposed Aboveground Facility - Liquefaction Facility			
BOROUGH:	KENAI PENINSULA	DRAWN BY:	AGDC
STATE:	ALASKA	CHECKED BY:	
REV. NO.:	REVISION	DATE	
A	ISSUED FOR REVIEW	2017-03-09	
PRELIMINARY			
1:17,000 0 1,000 2,000 Feet			
DATE:	2017-03-09	PROJECTION:	NAD83 NSRS2007 ALASKAZONE4 FTUS 54392

DISCLAIMER

The information contained herein is for informational or planning purposes only. It does not nor should it be deemed to be an offer, request or proposals for rights or occupation of any kind. The Alaska LNG Project Participants and their respective officers, employees and agents, make no warranty, implied or otherwise, nor accept any liability, as to the accuracy or completeness of the information contained in these documents, drawings or electronic files. Do not remove or delete this note from document, drawing or electronic file.

PROPOSED FACILITY - MARINE TERMINAL - FIGURE B1-3



REPRESENTATIVE AREA FOR FACILITY SITING - SUBJECT TO CHANGE

B-165



Legend

- LNG Plant Operations Area
- Material Offloading Facility
- Material Offloading Facility Dredging Area
- Product Loading Facility

ALASKA LNG PROJECT
Proposed Facility - Marine Terminal

BOROUGH:	KENAI PENINSULA	DRAWN BY:	AGDC
STATE:	ALASKA	CHECKED BY:	
REV. NO.:	REVISION	DATE	
A	ISSUED FOR REVIEW	2017-03-09	
PRELIMINARY			
1:8,000			
DATE:	2017-03-09	PROJECTION:	NAD83 NSRS2007 ALASKAZONE4 FTUS 54392

DISCLAIMER

The information contained herein is for informational or planning purposes only. It does not nor should it be deemed to be an offer, request or proposals for rights or occupation of any kind. The Alaska LNG Project Participants and their respective officers, employees and agents, make no warranty, implied or otherwise, nor accept any liability, as to the accuracy or completeness of the information contained in these documents, drawings or electronic files. Do not remove or delete this note from document, drawing or electronic file.