

**APPENDIX B**  
*(Volume 2 of 4)*

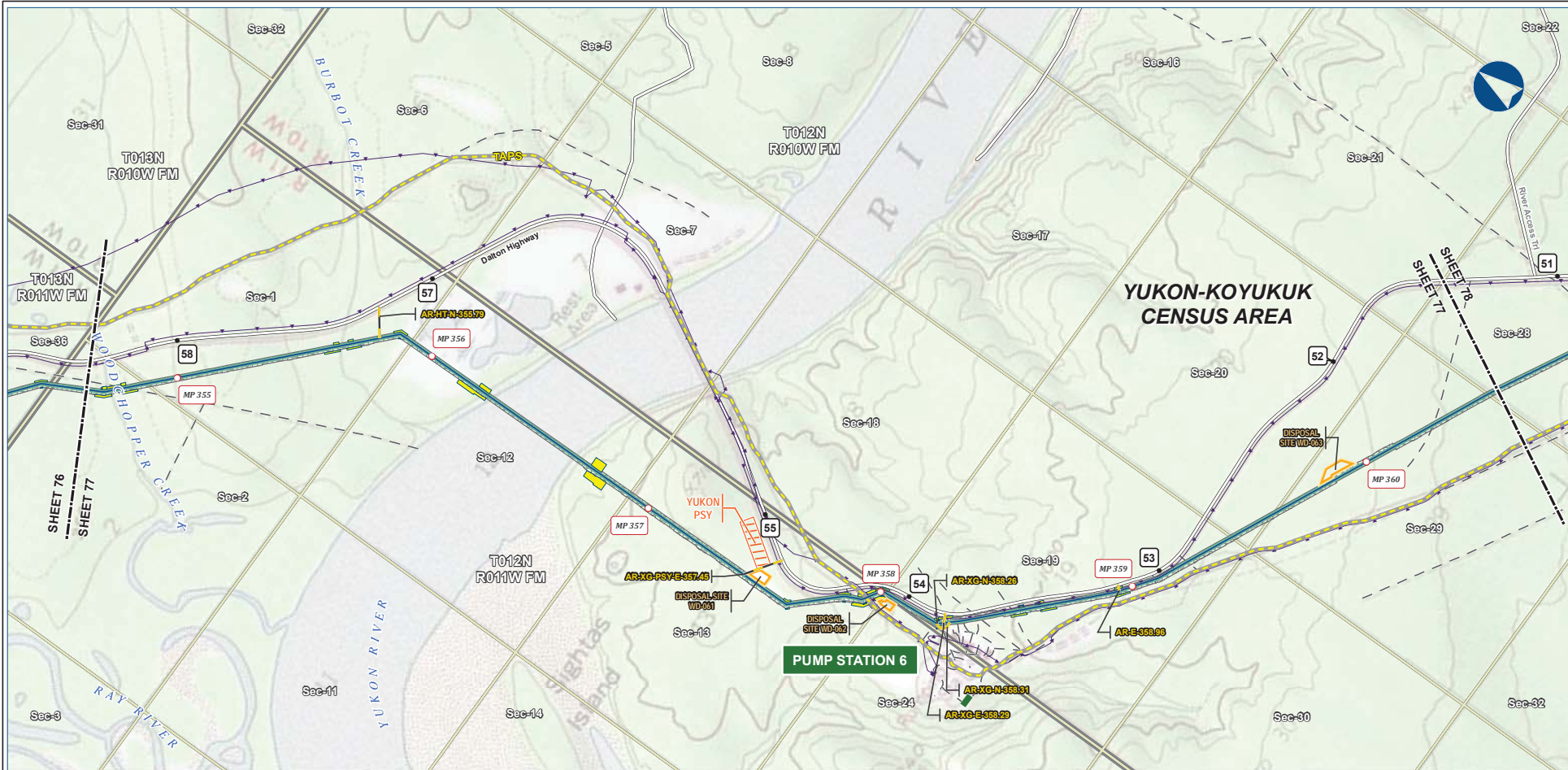
**Project Maps**

**Mainline Facilities MP 355–545**

**APPENDIX B Volume 2: Project Maps – Mainline Facilities MP 355–545**

**Table of Contents**

Mainline Facilities (cont'd)..... B-84



B-84

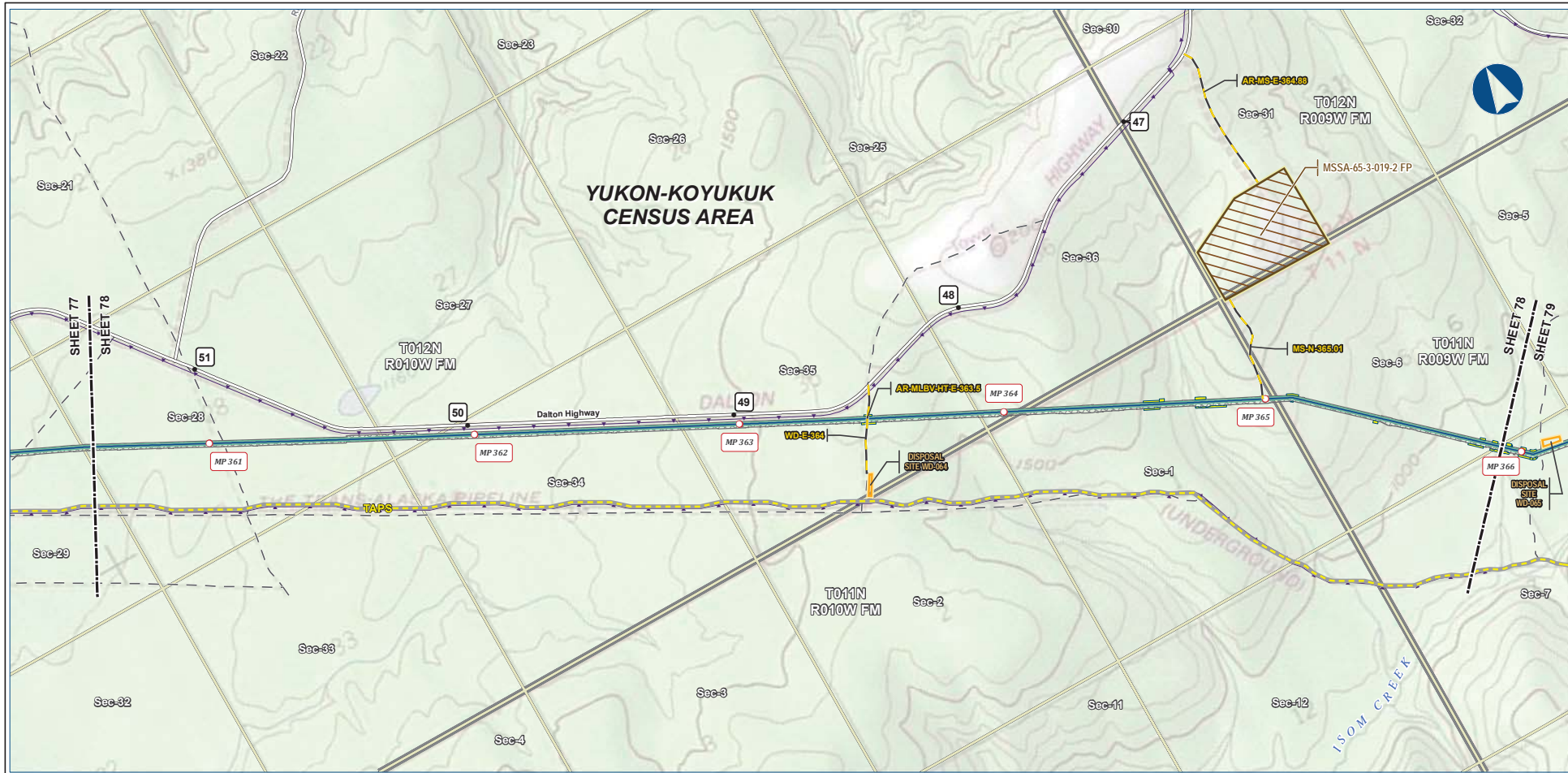


Legend		EXISTING FEATURES	
Mainline Pipeline	Permanent ROW	Existing Roads	TAPS
Access Road - Gravel	Construction ROW	Off Road Trails	Buried Cable
Pipe Storage Yard (PSY)	ATWS	Alaska DOT Place Names	Section
Disposal Site	Disposal Site	Township	

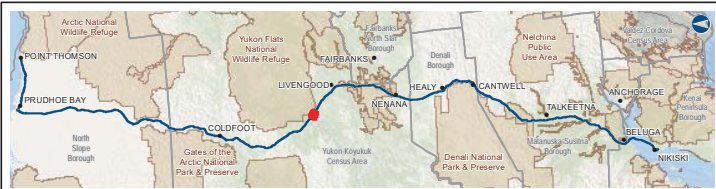
ALASKA LNG PROJECT Preliminary Facility Locations Mainline Rev C2 Route			
CENSUS AREA:	YUKON-KOYUKUK	DRAWN BY:	AGDC
STATE:	ALASKA	CHECKED BY:	
REV. NO.:	REVISION	DATE	
A	ISSUED FOR REVIEW	2017-03-10	
<b>PRELIMINARY</b>			
1:24,000			
DATE:	2017-03-10	PROJECTION:	NAD83 NRSR2007 ALASKAZONE4 FTUS 54392

**DISCLAIMER**

The information contained herein is for informational or planning purposes only. It does not nor should it be deemed to be an offer, request or proposals for rights or occupation of any kind. The Alaska LNG Project Participants and their respective officers, employees and agents, make no warranty, implied or otherwise, nor accept any liability, as to the accuracy or completeness of the information contained in these documents, drawings or electronic files. Do not remove or delete this note from document, drawing or electronic file.



B-85



Legend		EXISTING FEATURES	
Mainline Pipeline	Permanent ROW	Existing Roads	Off Road Trails
Access Road - Gravel	Construction ROW	TAPS	Buried Cable
Disposal Site	ATWS	Section	Township
Material Site Study Area (MSSA)			

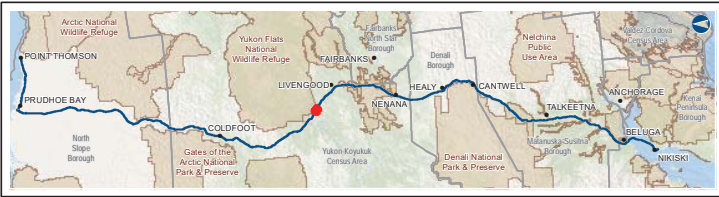
ALASKA LNG PROJECT			
Preliminary Facility Locations			
Mainline Rev C2 Route			
CENSUS AREA:	YUKON-KOYUKUK	DRAWN BY:	AGDC
STATE:	ALASKA	CHECKED BY:	
REV. NO.:	REVISION	DATE	
A	ISSUED FOR REVIEW	2017-03-10	
<b>PRELIMINARY</b>			
1:24,000			
DATE:	2017-03-10	PROJECTION:	NAD83 NRSR2007 ALASKAZONE4 FTUS S4392

**DISCLAIMER**

The information contained herein is for informational or planning purposes only. It does not nor should it be deemed to be an offer, request or proposals for rights or occupation of any kind. The Alaska LNG Project Participants and their respective officers, employees and agents, make no warranty, implied or otherwise, nor accept any liability, as to the accuracy or completeness of the information contained in these documents, drawings or electronic files. Do not remove or delete this note from document, drawing or electronic file.



B-86



Legend		EXISTING FEATURES	
Permanent ROW	Mainline Pipeline	Existing Roads	Off Road Trails
Construction ROW	ATWS	TAPS	Buried Cable
Pipe Storage Yard (PSY)	Disposal Site	Section	Township
Material Site Study Area (MSSA)			

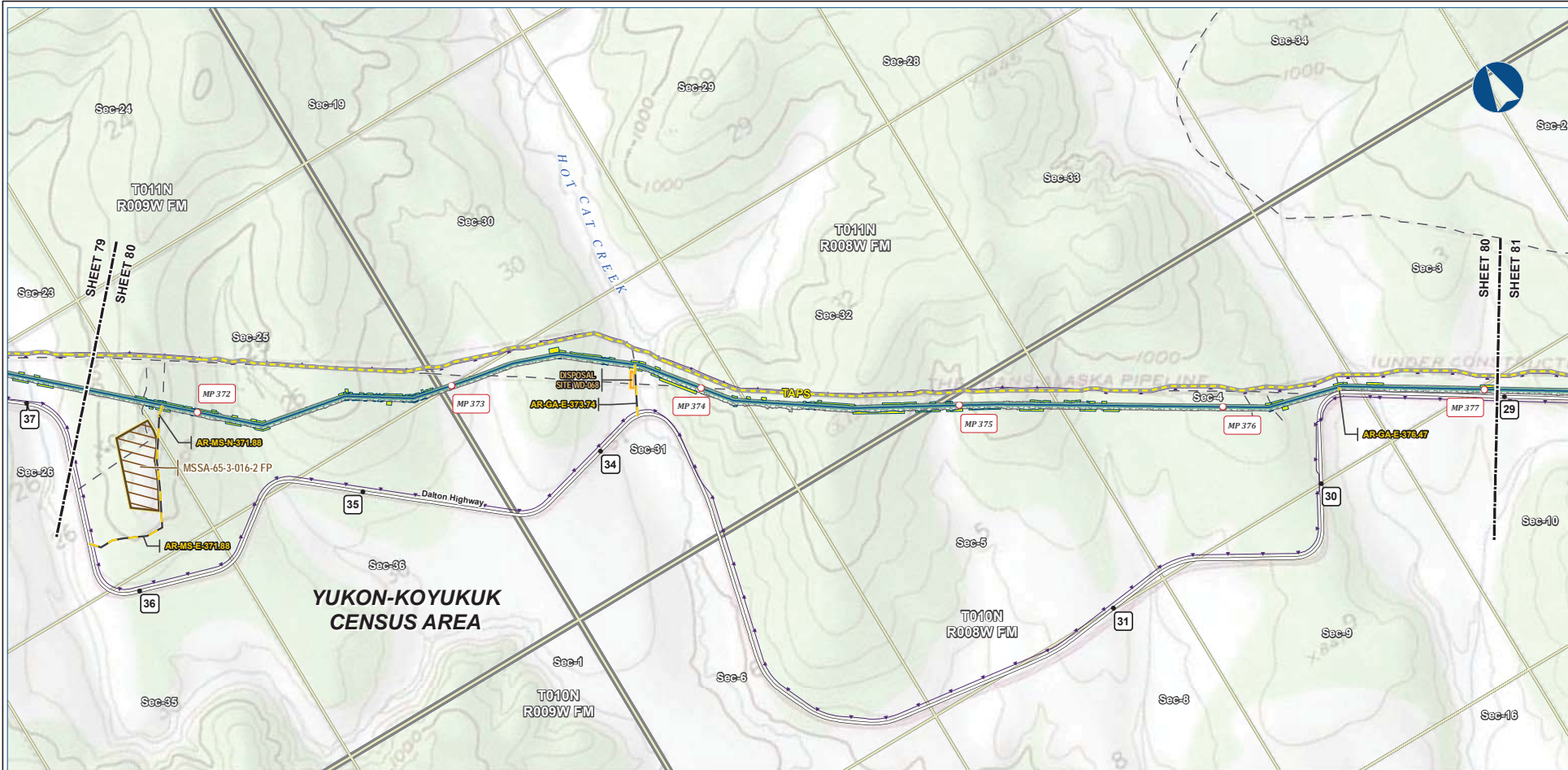
ALASKA LNG PROJECT Preliminary Facility Locations Mainline Rev C2 Route			
CENSUS AREA:	YUKON-KOYUKUK	DRAWN BY:	AGDC
STATE:	ALASKA	CHECKED BY:	
REV. NO.:	REVISION	DATE	
A	ISSUED FOR REVIEW	2017-03-10	
<b>PRELIMINARY</b>			
1:24,000			
DATE:	2017-03-10	PROJECTION:	NAD83 NRSR2007 ALASKAZONE4 FTUS 54392

**DISCLAIMER**

The information contained herein is for informational or planning purposes only. It does not nor should it be deemed to be an offer, request or proposals for rights or occupation of any kind. The Alaska LNG Project Participants and their respective officers, employees and agents, make no warranty, implied or otherwise, nor accept any liability, as to the accuracy or completeness of the information contained in these documents, drawings or electronic files. Do not remove or delete this note from document, drawing or electronic file.

PRELIMINARY FACILITY LOCATIONS - MAINLINE REV C2 ROUTE

ALASKA LNG



B-87



Legend		EXISTING FEATURES	
PIPELINE	Permanent ROW	Existing Roads	Off Road Trails
Mainline Pipeline	Construction ROW	ATWS	TAPS
Access Road - Gravel	Disposal Site	Buried Cable	Section
	Material Site Study Area (MSSA)	Township	

ALASKA LNG PROJECT Preliminary Facility Locations Mainline Rev C2 Route			
CENSUS AREA: YUKON-KOYUKUK	DRAWN BY: AGDC		
STATE: ALASKA	CHECKED BY:		
REV. NO.:	REVISION	DATE	
A	ISSUED FOR REVIEW	2017-03-10	
<b>PRELIMINARY</b>			
1:24,000			
DATE: 2017-03-10	PROJECTION: NAD83 NRSR2007 ALASKAZONE4 FTUS 54392		

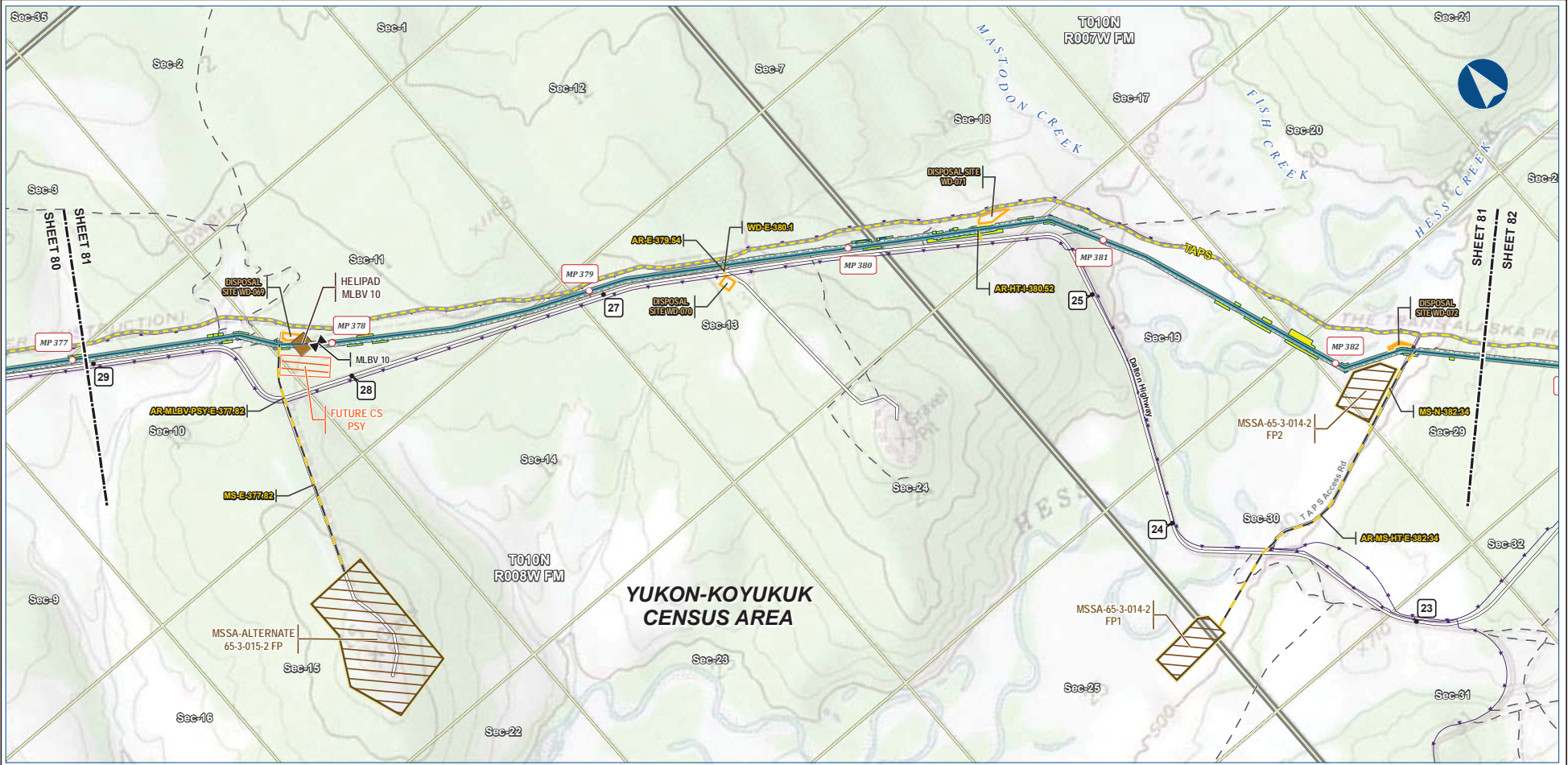
**DISCLAIMER**

The information contained herein is for informational or planning purposes only. It does not nor should it be deemed to be an offer, request or proposals for rights or occupation of any kind. The Alaska LNG Project Participants and their respective officers, employees and agents, make no warranty, implied or otherwise, nor accept any liability, as to the accuracy or completeness of the information contained in these documents, drawings or electronic files. Do not remove or delete this note from document, drawing or electronic file.

Alaska LNG Project

PRELIMINARY FACILITY LOCATIONS - MAINLINE REV C2 ROUTE

ALASKA LNG



B-88



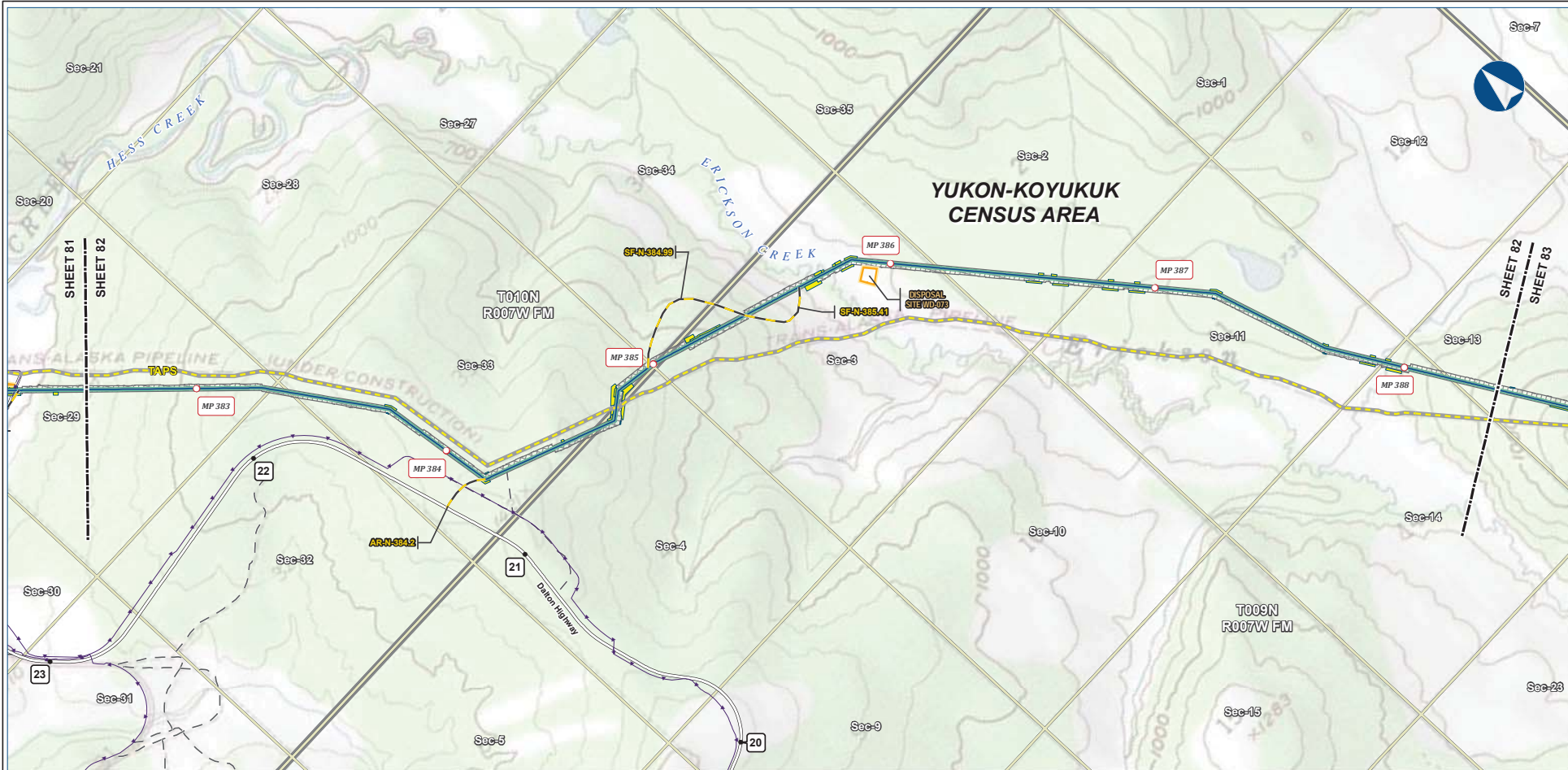
Legend		EXISTING FEATURES	
Permanent ROW	Mainline Pipeline	Existing Roads	Off Road Trails
Construction ROW	Access Road - Gravel	TAPS	Buried Cable
Mainline Blockvalve	Helipad	ATWS	Section
Pipe Storage Yard (PSY)	Disposal Site	Disposal Site	Township
Material Site Study Area (MSSA)			

ALASKA LNG PROJECT Preliminary Facility Locations Mainline Rev C2 Route			
CENSUS AREA:	YUKON-KOYUKUK	DRAWN BY:	AGDC
STATE:	ALASKA	CHECKED BY:	
REV. NO.:		REVISION	DATE
A		ISSUED FOR REVIEW	2017-03-10
<b>PRELIMINARY</b>			
1:24,000			
DATE:	2017-03-10	PROJECTION:	NAD83 NRSR2007 ALASKAZONE4 FTUS S4392

**DISCLAIMER**

The information contained herein is for informational or planning purposes only. It does not nor should it be deemed to be an offer, request or proposals for rights or occupation of any kind. The Alaska LNG Project Participants and their respective officers, employees and agents, make no warranty, implied or otherwise, nor accept any liability, as to the accuracy or completeness of the information contained in these documents, drawings or electronic files. Do not remove or delete this note from document, drawing or electronic file.

Alaska LNG Project



B-89



Legend		EXISTING FEATURES	
Mainline Pipeline	Permanent ROW	Existing Roads	Off Road Trails
Access Road - Gravel	Construction ROW	TAPS	Buried Cable
ATWS	Disposal Site	Section	Township

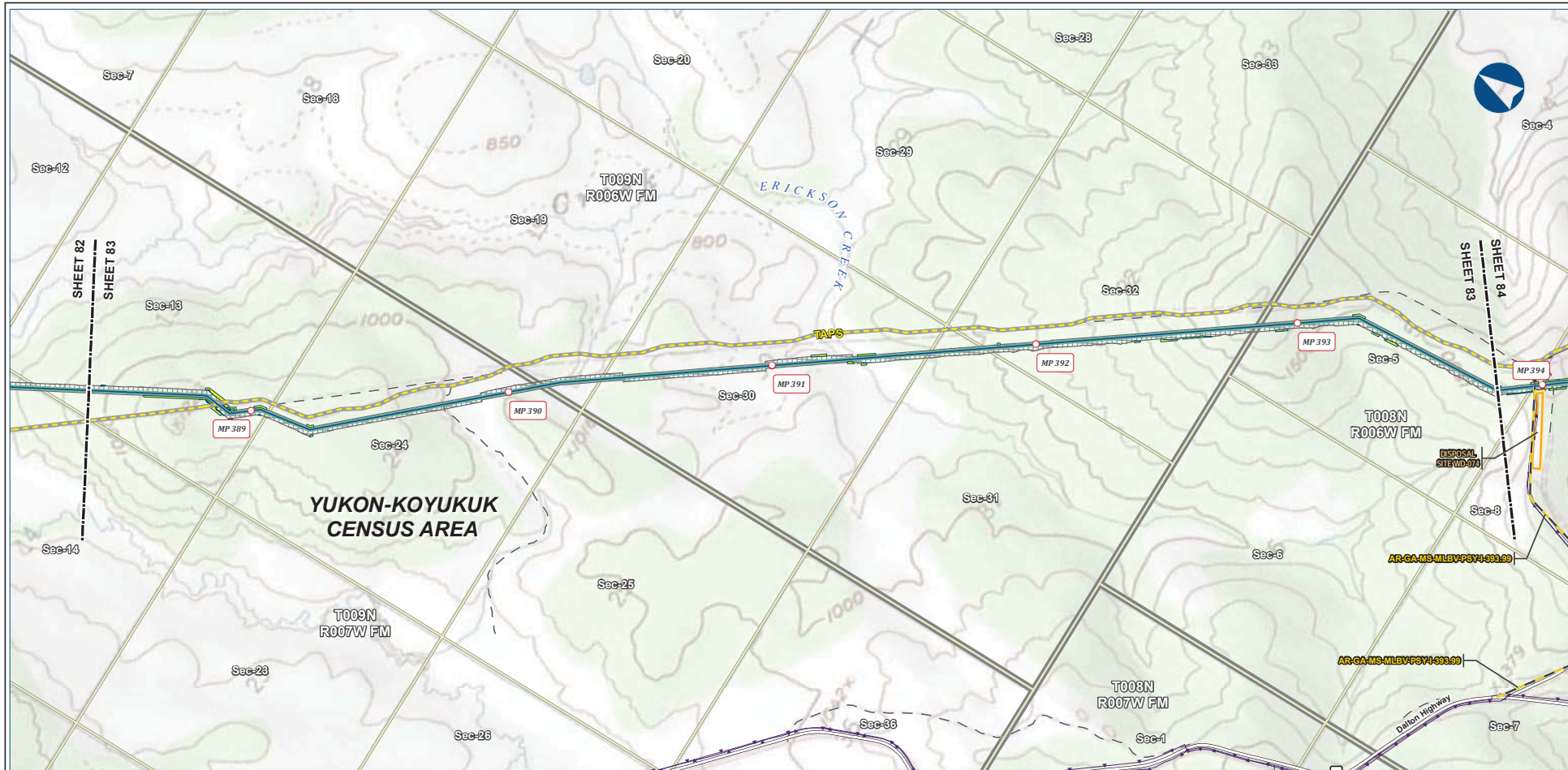
ALASKA LNG PROJECT Preliminary Facility Locations Mainline Rev C2 Route		
CENSUS AREA: YUKON-KOYUKUK	DRAWN BY: AGDC	
STATE: ALASKA	CHECKED BY:	
REV. NO.	REVISION	DATE
A	ISSUED FOR REVIEW	2017-03-10
<b>PRELIMINARY</b>		
1:24,000		
DATE: 2017-03-10	PROJECTION: NAD83 NSRS2007 ALASKAZONE4 FTUS S4392	

**DISCLAIMER**

The information contained herein is for informational or planning purposes only. It does not nor should it be deemed to be an offer, request or proposals for rights or occupation of any kind. The Alaska LNG Project Participants and their respective officers, employees and agents, make no warranty, implied or otherwise, nor accept any liability, as to the accuracy or completeness of the information contained in these documents, drawings or electronic files. Do not remove or delete this note from document, drawing or electronic file.

PRELIMINARY FACILITY LOCATIONS - MAINLINE REV C2 ROUTE

ALASKA LNG



B-90



Legend	
	Mainline Pipeline
	Access Road - Gravel
	Permanent ROW
	Construction ROW
	ATWS
	Disposal Site
	Existing Roads
	Off Road Trails
	TAPS
	Buried Cable
	Section
	Township

ALASKA LNG PROJECT Preliminary Facility Locations Mainline Rev C2 Route			
CENSUS AREA:	YUKON-KOYUKUK	DRAWN BY:	AGDC
STATE:	ALASKA	CHECKED BY:	
REV. NO.:	REVISION	DATE	
A	ISSUED FOR REVIEW	2017-03-10	
<b>PRELIMINARY</b>			
1:24,000			
DATE:	2017-03-10	PROJECTION:	NAD83 NRS2007 ALASKAZONE4 FTUS 54392

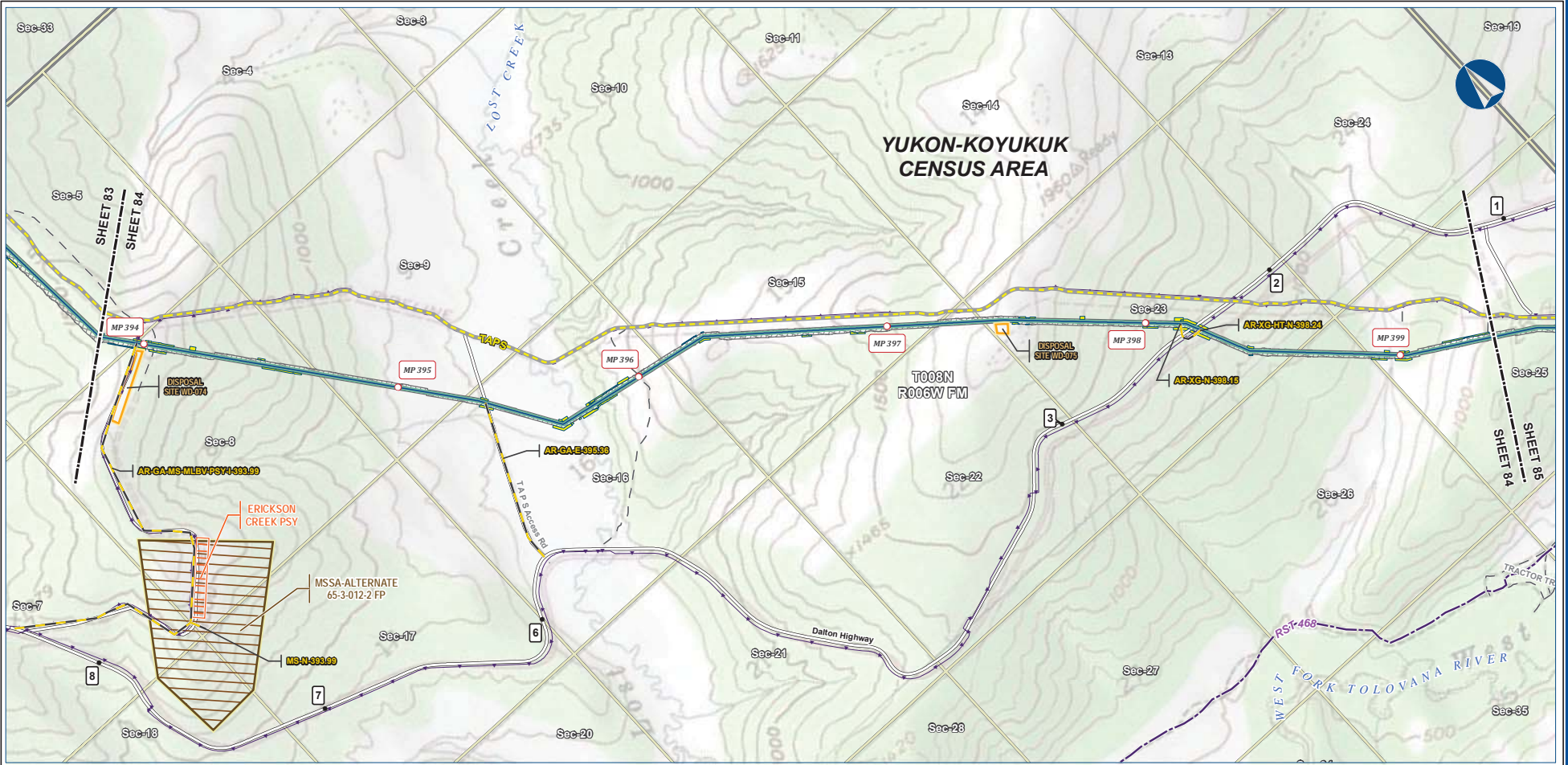
**DISCLAIMER**

The information contained herein is for informational or planning purposes only. It does not nor should it be deemed to be an offer, request or proposals for rights or occupation of any kind. The Alaska LNG Project Participants and their respective officers, employees and agents, make no warranty, implied or otherwise, nor accept any liability, as to the accuracy or completeness of the information contained in these documents, drawings or electronic files. Do not remove or delete this note from document, drawing or electronic file.

Alaska LNG Project

PRELIMINARY FACILITY LOCATIONS - MAINLINE REV C2 ROUTE

ALASKA LNG



B-91



Legend		EXISTING FEATURES	
	Mainline Pipeline		Existing Roads
	Construction ROW		Revised Statute 2477 Trail
	Access Road - Gravel		Off Road Trails
	ATWS		TAPS
	Pipe Storage Yard (PSY)		Buried Cable
	Disposal Site		Section
	Material Site Study Area (MSSA)		Township

ALASKA LNG PROJECT			
Preliminary Facility Locations			
Mainline Rev C2 Route			
CENSUS AREA:	YUKON-KOYUKUK	DRAWN BY:	AGDC
STATE:	ALASKA	CHECKED BY:	
REV. NO.:	REVISION	DATE	
A	ISSUED FOR REVIEW	2017-03-10	
<b>PRELIMINARY</b>			
1:24,000			
DATE:	2017-03-10	PROJECTION:	NAD83 NRSR2007 ALASKAZONE4 FTUS S4392

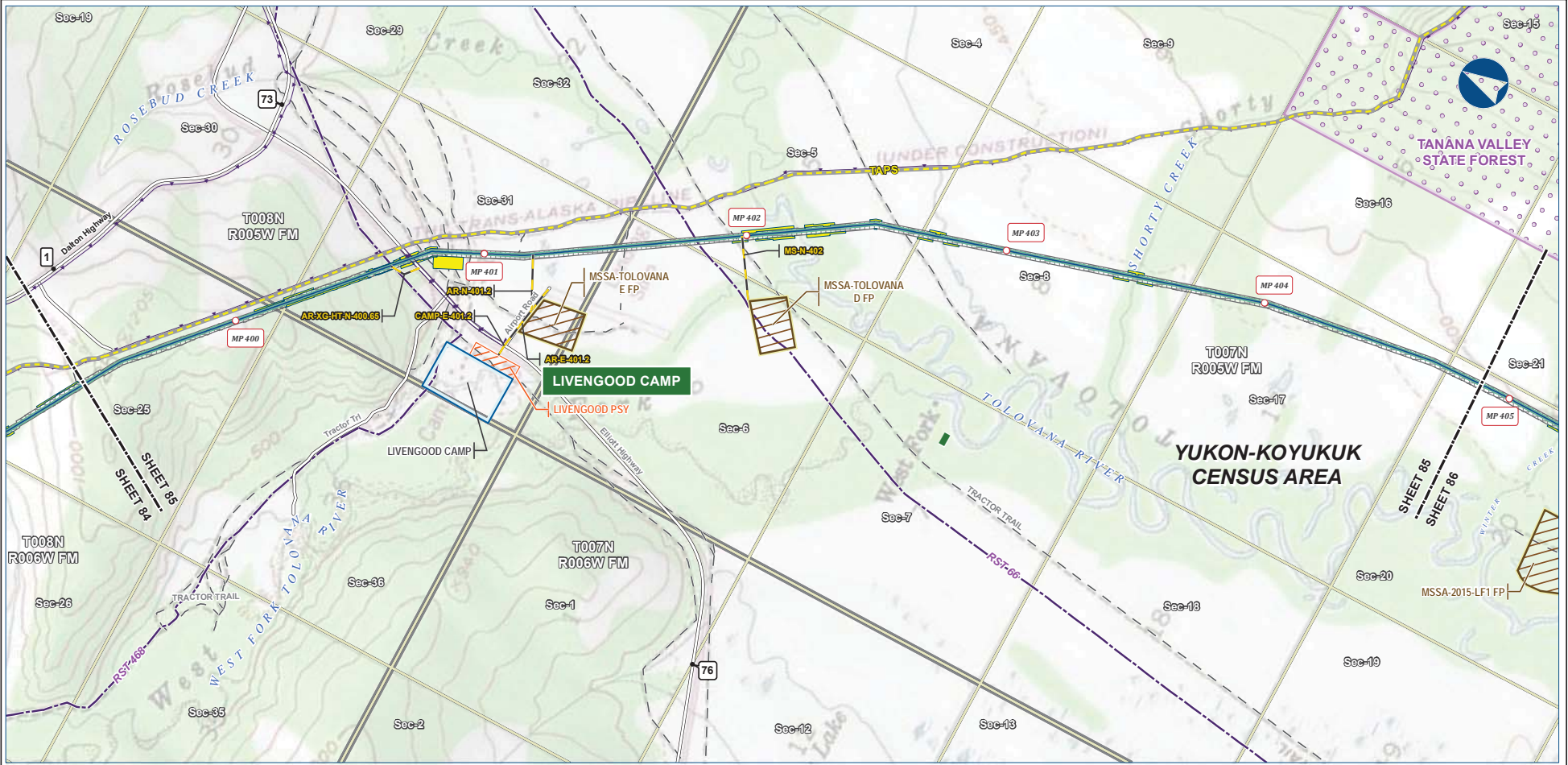
**DISCLAIMER**

The information contained herein is for informational or planning purposes only. It does not nor should it be deemed to be an offer, request or proposals for rights or occupation of any kind. The Alaska LNG Project Participants and their respective officers, employees and agents, make no warranty, implied or otherwise, nor accept any liability, as to the accuracy or completeness of the information contained in these documents, drawings or electronic files. Do not remove or delete this note from document, drawing or electronic file.

Alaska LNG Project

PRELIMINARY FACILITY LOCATIONS - MAINLINE REV C2 ROUTE

ALASKA LNG



B-92



Alaska LNG Project

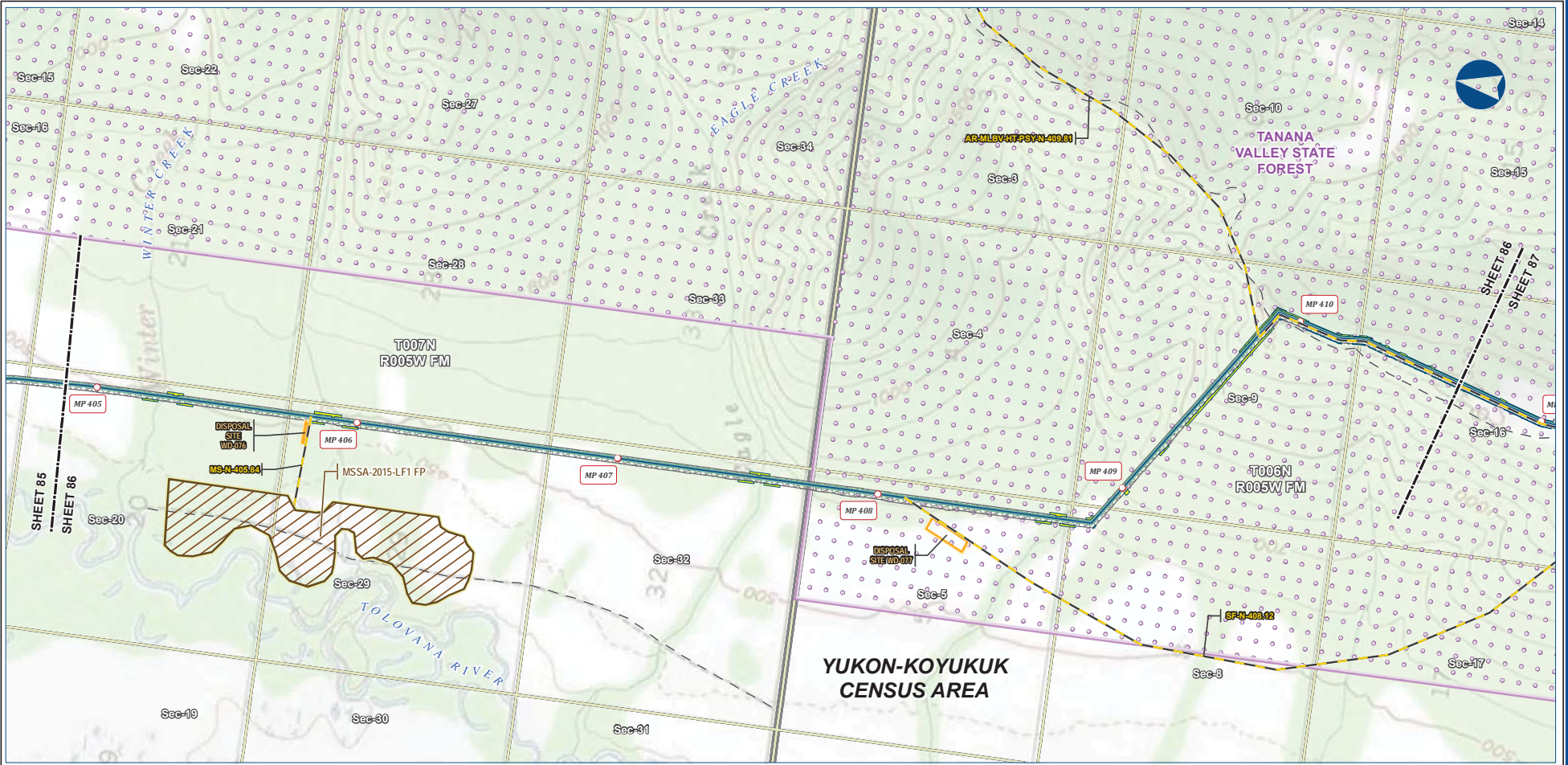
PIPELINE		EXISTING FEATURES	
	Mainline Pipeline		Existing Roads
	Construction ROW		Revised Statute 2477 Trail
	Access Road - Gravel		Off Road Trails
	Permanent ROW		TAPS
	ATWS		Buried Cable
	Off ROW Camp		Conservation Lands
	Pipe Storage Yard (PSY)		Alaska DOT Place Names
	Material Site Study Area (MSSA)		Section
			Township

ALASKA LNG PROJECT Preliminary Facility Locations Mainline Rev C2 Route			
CENSUS AREA:	YUKON-KOYUKUK	DRAWN BY:	AGDC
STATE:	ALASKA	CHECKED BY:	
REV. NO.:	REVISION	DATE	
A	ISSUED FOR REVIEW	2017-03-10	
<b>PRELIMINARY</b>			
1:24,000			
DATE:	2017-03-10	PROJECTION:	NAD83 NRSR2007 ALASKAZONE4 FTUS 54392

**DISCLAIMER**

The information contained herein is for informational or planning purposes only. It does not nor should it be deemed to be an offer, request or proposals for rights or occupation of any kind. The Alaska LNG Project Participants and their respective officers, employees and agents, make no warranty, implied or otherwise, nor accept any liability, as to the accuracy or completeness of the information contained in these documents, drawings or electronic files. Do not remove or delete this note from document, drawing or electronic file.

PRELIMINARY FACILITY LOCATIONS - MAINLINE REV C2 ROUTE



B-93



Legend		EXISTING FEATURES	
Mainline Pipeline	Permanent ROW	Existing Roads	Conservation Lands
Access Road - Gravel	ATWS	Off Road Trails	Section
Disposal Site	Material Site Study Area (MSSA)	Section	Township
Construction ROW		Section	

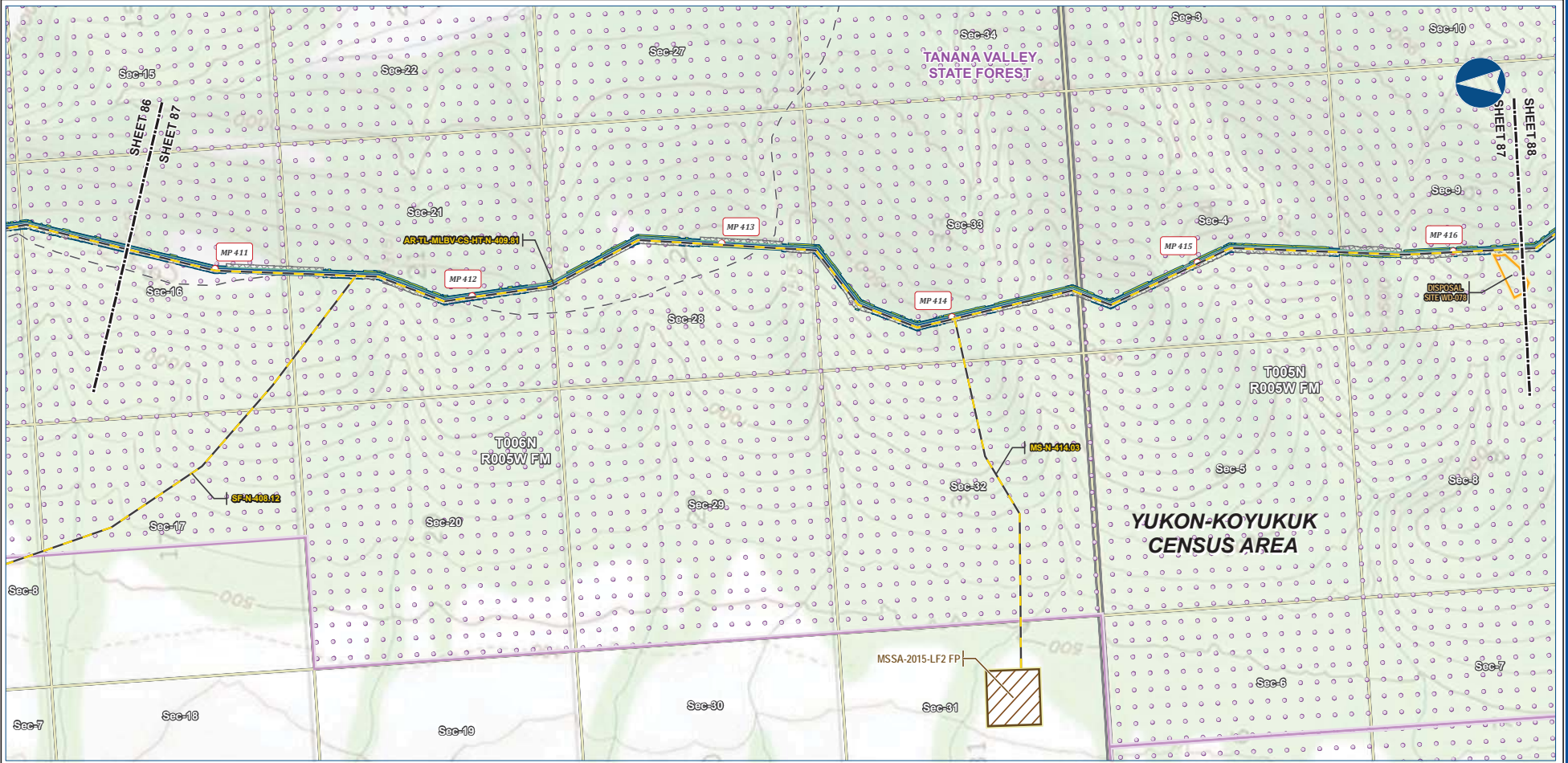
ALASKA LNG PROJECT Preliminary Facility Locations Mainline Rev C2 Route			
CENSUS AREA: YUKON-KOYUKUK	DRAWN BY: AGDC	STATE: ALASKA	CHECKED BY:
REV. NO.: A	REVISION: ISSUED FOR REVIEW	DATE: 2017-03-10	
<b>PRELIMINARY</b>			
1:24,000			
DATE: 2017-03-10	PROJECTION: NAD83 NRSR2007 ALASKAZONE4 FTUS S4392	DWG: RR1_APPENDIX_A1_MAINLINE_TOPO_REV_C2_CL	SHEET: 86

**DISCLAIMER**

The information contained herein is for informational or planning purposes only. It does not nor should it be deemed to be an offer, request or proposals for rights or occupation of any kind. The Alaska LNG Project Participants and their respective officers, employees and agents, make no warranty, implied or otherwise, nor accept any liability, as to the accuracy or completeness of the information contained in these documents, drawings or electronic files. Do not remove or delete this note from document, drawing or electronic file.

PRELIMINARY FACILITY LOCATIONS - MAINLINE REV C2 ROUTE

ALASKA LNG



B-94



**Legend**

<b>PIPELINE</b>	Permanent ROW	Existing Features
Mainline Pipeline	Construction ROW	Existing Roads
Access Road - Gravel	ATWS	Off Road Trails
Disposal Site	Material Site Study Area (MSSA)	Conservation Lands
		Section
		Township

**ALASKA LNG PROJECT**  
Preliminary Facility Locations  
Mainline Rev C2 Route

CENSUS AREA: YUKON-KOYUK	DRAWN BY: AGDC
STATE: ALASKA	CHECKED BY:
REV. NO.:	REVISION
A	ISSUED FOR REVIEW
	DATE
	2017-03-10
<b>PRELIMINARY</b>	
1:24,000	
0 1/4 1/2 3/4 1 Mile	
DATE: 2017-03-10	PROJECTION: NAD83 NRSR2007 ALASKAZONE4 FTUS S4392

**DISCLAIMER**

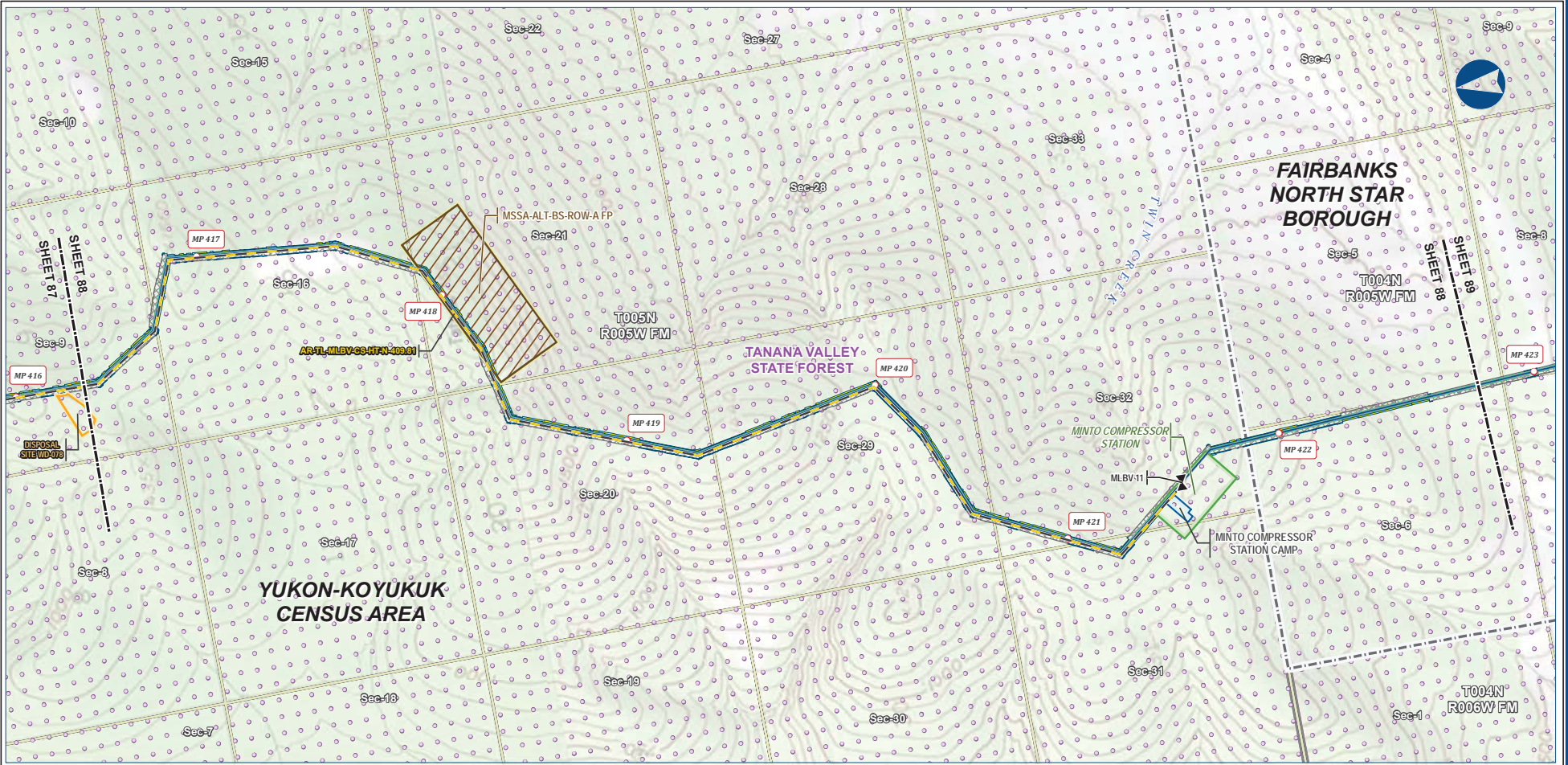
The information contained herein is for informational or planning purposes only. It does not nor should it be deemed to be an offer, request or proposals for rights or occupation of any kind. The Alaska LNG Project Participants and their respective officers, employees and agents, make no warranty, implied or otherwise, nor accept any liability, as to the accuracy or completeness of the information contained in these documents, drawings or electronic files. Do not remove or delete this note from document, drawing or electronic file.

DWG: RR\_1\_APPENDIX\_A1\_MAINLINE\_TOPO\_REV\_C2\_CL SHEET: 87

Alaska LNG Project

PRELIMINARY FACILITY LOCATIONS - MAINLINE REV C2 ROUTE

ALASKA LNG



B-95



Legend		EXISTING FEATURES	
Permanent ROW	Mainline Pipeline	Existing Roads	Borough / Census Area
Construction ROW	Access Road - Gravel	Conservation Lands	Section
ATWS	Compressor Station	Camp	Township
Disposal Site	Material Site Study Area (MSSA)		

ALASKA LNG PROJECT Preliminary Facility Locations Mainline Rev C2 Route			
CENSUS AREA:	YUKON-KOYUKUK	DRAWN BY:	AGDC
STATE:	ALASKA	CHECKED BY:	
REV. NO.:	REVISION	DATE	
A	ISSUED FOR REVIEW	2017-03-10	
<b>PRELIMINARY</b>			
1:24,000			
DATE:	2017-03-10	PROJECTION:	NAD83 NSRS2007 ALASKAZONE4 FTUS S4392

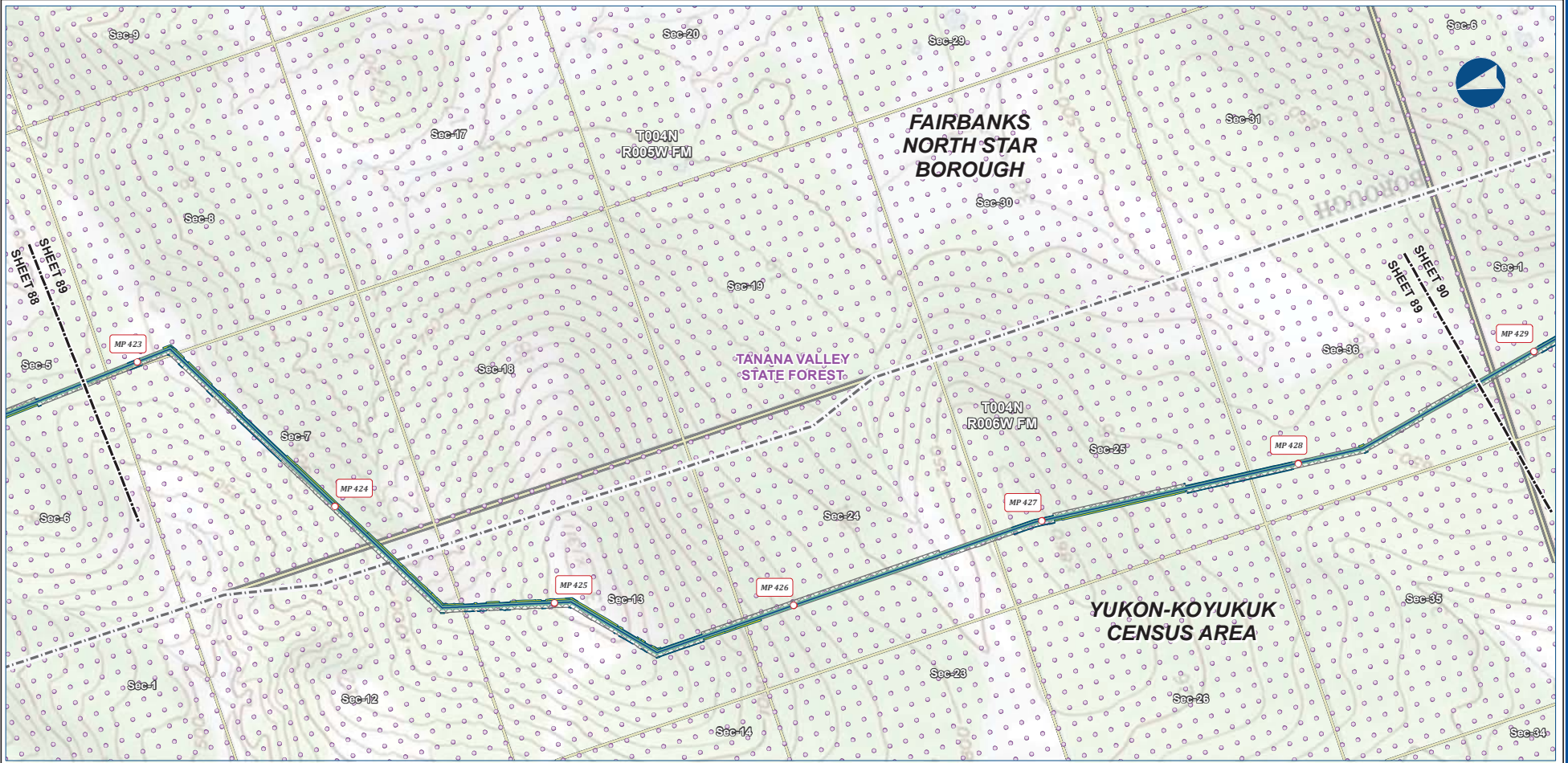
**DISCLAIMER**

The information contained herein is for informational or planning purposes only. It does not nor should it be deemed to be an offer, request or proposals for rights or occupation of any kind. The Alaska LNG Project Participants and their respective officers, employees and agents, make no warranty, implied or otherwise, nor accept any liability, as to the accuracy or completeness of the information contained in these documents, drawings or electronic files. Do not remove or delete this note from document, drawing or electronic file.

Alaska LNG Project

PRELIMINARY FACILITY LOCATIONS - MAINLINE REV C2 ROUTE

ALASKA LNG



B-96



Alaska LNG Project

**Legend**

Mainline Pipeline	Permanent ROW	Existing Roads
Construction ROW	ATWS	Borough / Census Area
		Conservation Lands
		Section
		Township

**ALASKA LNG PROJECT**  
Preliminary Facility Locations  
Mainline Rev C2 Route

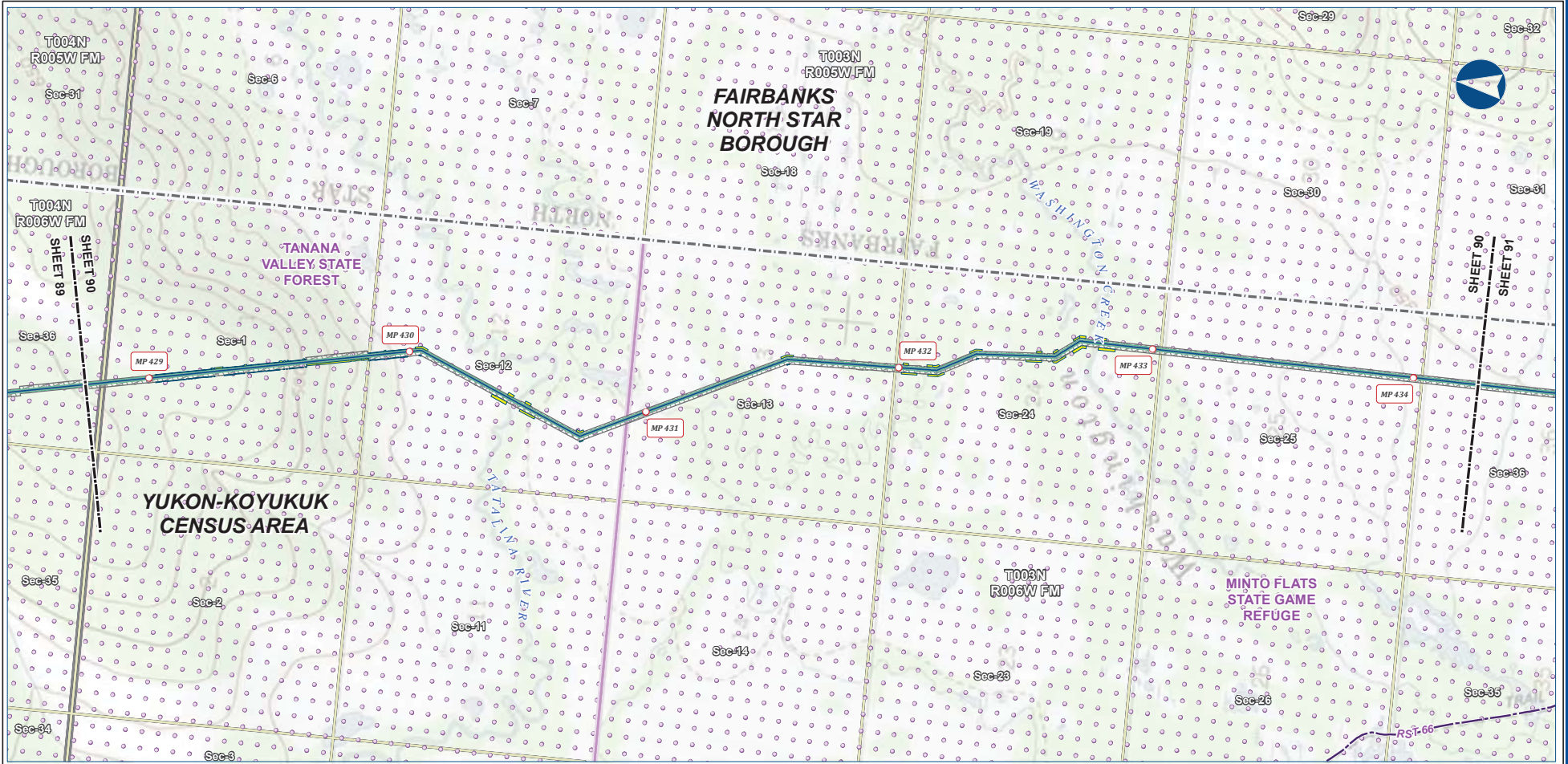
CENSUS AREA: YUKON-KOYUKUK	DRAWN BY: AGDC	
STATE: ALASKA	CHECKED BY:	
REV. NO.:	REVISION	DATE
A	ISSUED FOR REVIEW	2017-03-10
<b>PRELIMINARY</b>		
1:24,000		
0 1/4 1/2 3/4 1 1 1/4 1 1/2 Miles		
DATE: 2017-03-10	PROJECTION: NAD83 NSRS2007 ALASKAZONE4 FTUS 54392	DWG: RR-1_APPENDIX_A1_MAINLINE_TOPO_REV_C2_CL

**DISCLAIMER**

The information contained herein is for informational or planning purposes only. It does not nor should it be deemed to be an offer, request or proposals for rights or occupation of any kind. The Alaska LNG Project Participants and their respective officers, employees and agents, make no warranty, implied or otherwise, nor accept any liability, as to the accuracy or completeness of the information contained in these documents, drawings or electronic files. Do not remove or delete this note from document, drawing or electronic file.

PRELIMINARY FACILITY LOCATIONS - MAINLINE REV C2 ROUTE

ALASKA LNG



B-97



**Legend**

**PIPELINE**

- Mainline Pipeline

**EXISTING FEATURES**

- Permanent ROW
- Construction ROW
- ATWS
- Existing Roads
- Revised Statute 2477 Trail
- Borough / Census Area
- Conservation Lands
- Section
- Township

**ALASKA LNG PROJECT**  
Preliminary Facility Locations  
Mainline Rev C2 Route

CENSUS AREA: YUKON-KOYUKUK	DRAWN BY: AGDC	
STATE: ALASKA	CHECKED BY:	
REV. NO.:	REVISION	DATE
A	ISSUED FOR REVIEW	2017-03-10
<b>PRELIMINARY</b>		
1:24,000		
0 5 10 Miles		
DATE: 2017-03-10	PROJECTION: NAD83 NSRS2007 ALASKAZONE4 FTUS S4392	DWG: RR_1_APPENDIX_A1_MAINLINE_TOPO_REV_C2_CL

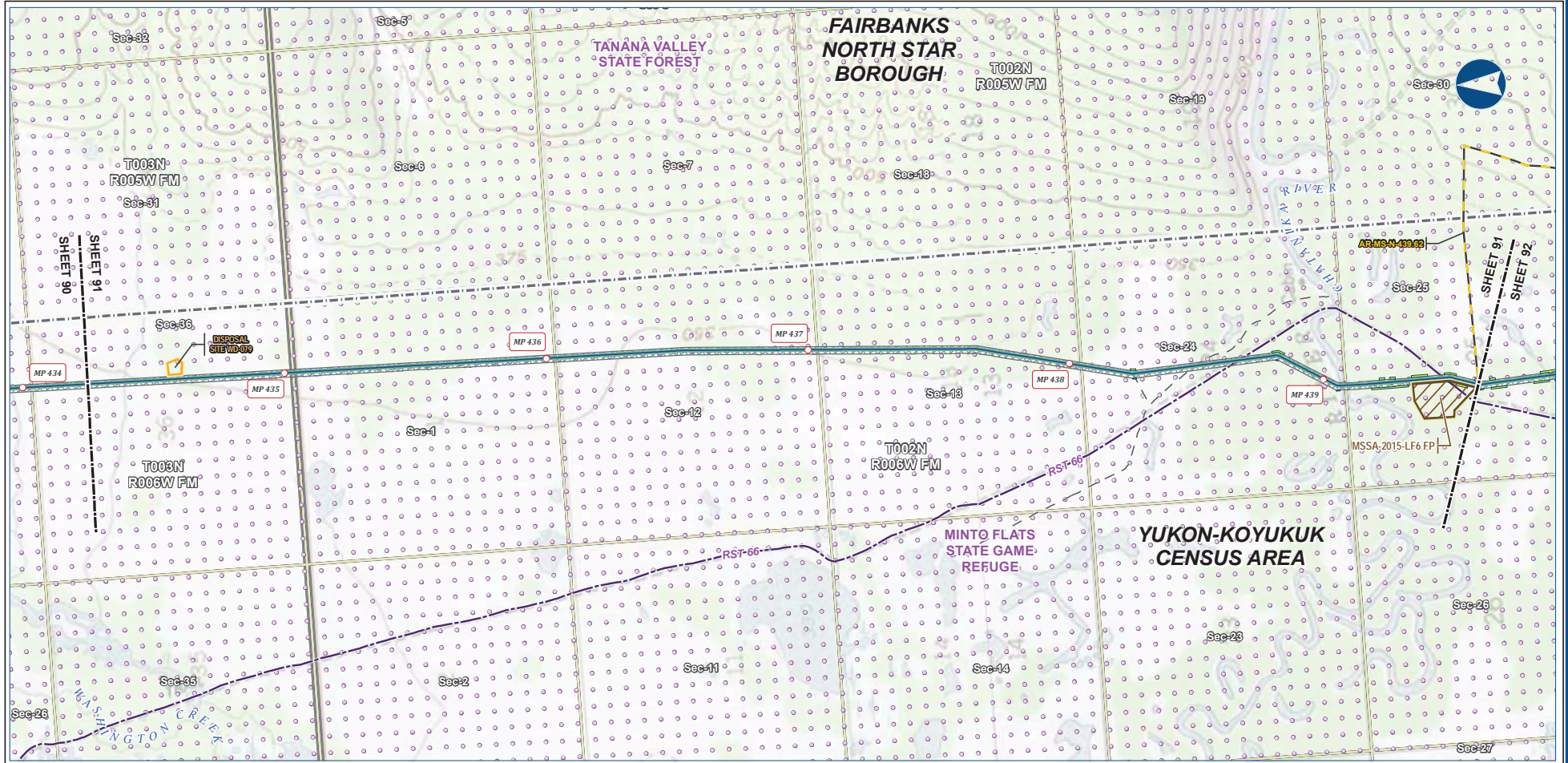
**DISCLAIMER**

The information contained herein is for informational or planning purposes only. It does not nor should it be deemed to be an offer, request or proposals for rights or occupation of any kind. The Alaska LNG Project Participants and their respective officers, employees and agents, make no warranty, implied or otherwise, nor accept any liability, as to the accuracy or completeness of the information contained in these documents, drawings or electronic files. Do not remove or delete this note from document, drawing or electronic file.

Alaska LNG Project

PRELIMINARY FACILITY LOCATIONS - MAINLINE REV C2 ROUTE

ALASKA LNG



B-98



**Legend**

Mainline Pipeline	Permanent ROW	Existing Roads
Access Road - Gravel	Construction ROW	Revised Statute 2477 Trail
	ATWS	Off Road Trails
	Disposal Site	Borough / Census Area
	Material Site Study Area (MSSA)	Conservation Lands
		Section
		Township

**ALASKA LNG PROJECT**  
Preliminary Facility Locations  
Mainline Rev C2 Route

CENSUS AREA: YUKON-KOYUKUK	DRAWN BY: AGDC	
STATE: ALASKA	CHECKED BY:	
REV. NO.:	REVISION	DATE
A	ISSUED FOR REVIEW	2017-03-10
<b>PRELIMINARY</b>		
1:24,000		
DATE: 2017-03-10    PROJECTION: NAD83 NSRS2007 ALASKAZONE4 FTUS 54392		

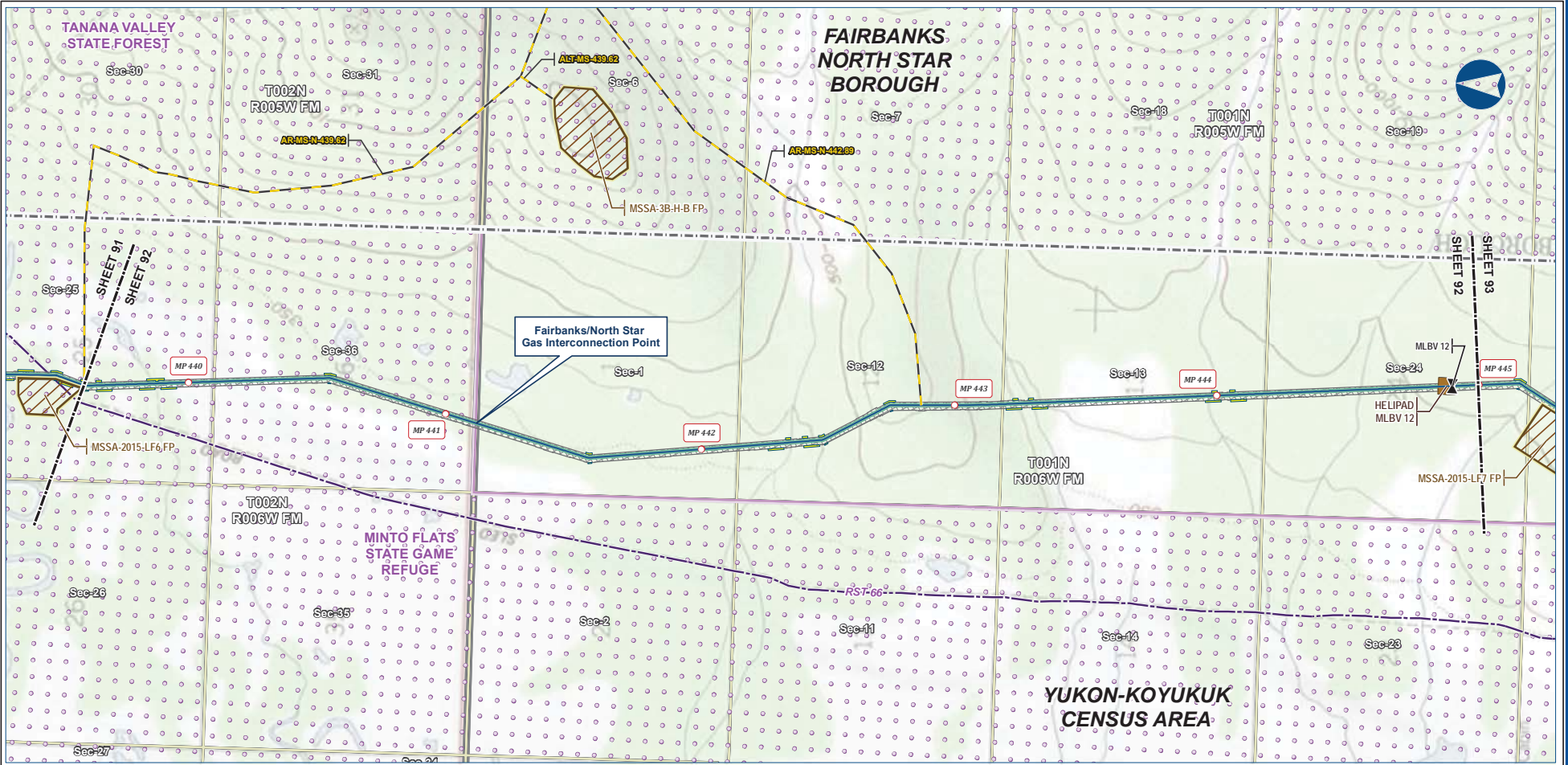
**DISCLAIMER**

The information contained herein is for informational or planning purposes only. It does not nor should it be deemed to be an offer, request or proposals for rights or occupation of any kind. The Alaska LNG Project Participants and their respective officers, employees and agents, make no warranty, implied or otherwise, nor accept any liability, as to the accuracy or completeness of the information contained in these documents, drawings or electronic files. Do not remove or delete this note from document, drawing or electronic file.

Alaska LNG Project

PRELIMINARY FACILITY LOCATIONS - MAINLINE REV C2 ROUTE

ALASKA LNG



B-99



**Legend**

Mainline Pipeline	Permanent ROW	Existing Roads
Access Road - Gravel	Construction ROW	Revised Statute 2477 Trail
Mainline Blockvalve	ATWS	Borough / Census Area
Helipad	Material Site Study Area (MSSA)	Conservation Lands
		Section
		Township

**ALASKA LNG PROJECT**  
Preliminary Facility Locations  
Mainline Rev C2 Route

CENSUS AREA: YUKON-KOYUKUK	DRAWN BY: AGDC
STATE: ALASKA	CHECKED BY:
REV. NO.: A	ISSUED FOR REVIEW
REVISION	DATE
	2017-03-10
<b>PRELIMINARY</b>	
1:24,000	
DATE: 2017-03-10	PROJECTION: NAD83 NSRS2007 ALASKAZONE4 FTUS 54392

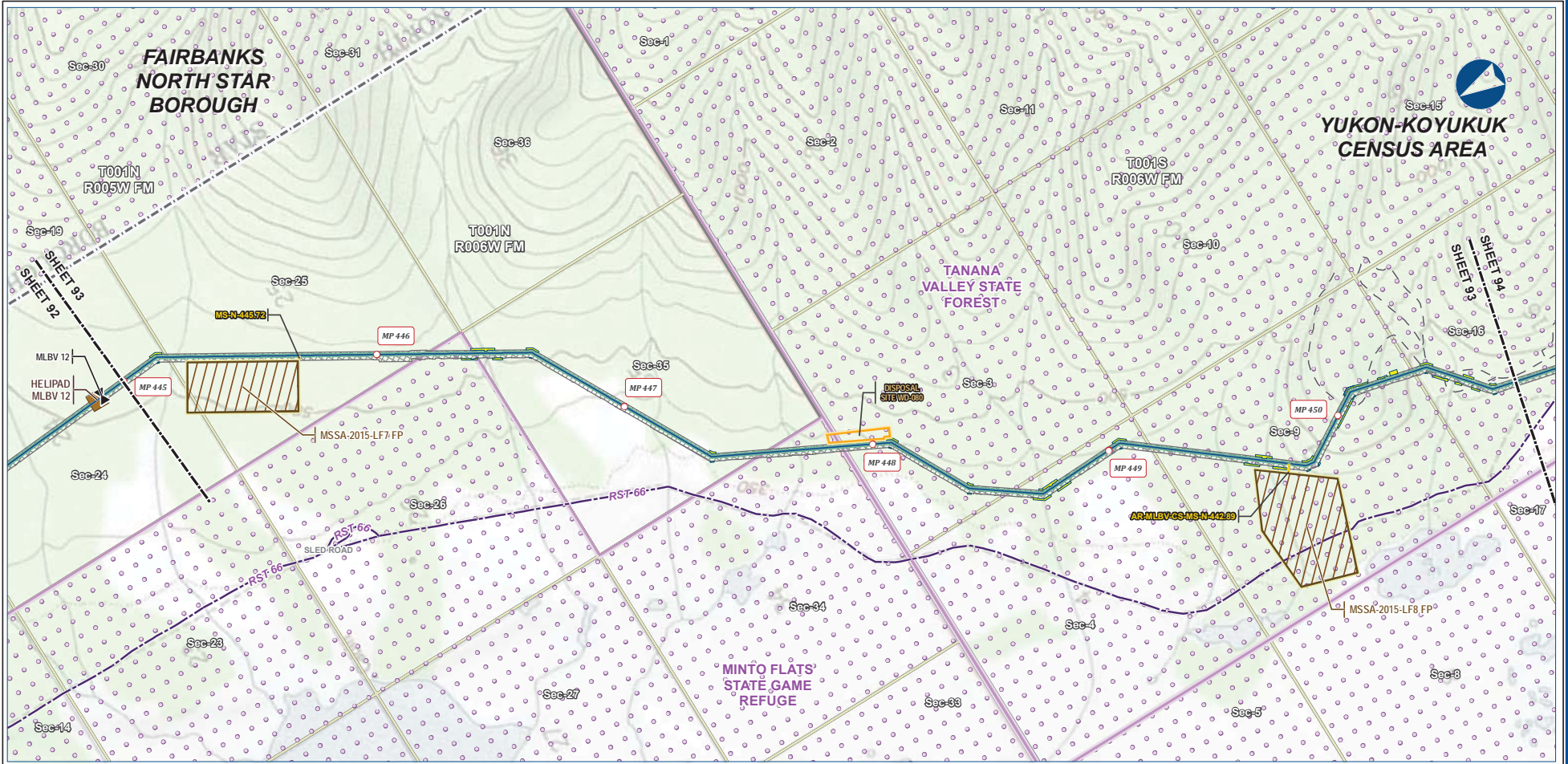
**DISCLAIMER**

The information contained herein is for informational or planning purposes only. It does not nor should it be deemed to be an offer, request or proposals for rights or occupation of any kind. The Alaska LNG Project Participants and their respective officers, employees and agents, make no warranty, implied or otherwise, nor accept any liability, as to the accuracy or completeness of the information contained in these documents, drawings or electronic files. Do not remove or delete this note from document, drawing or electronic file.

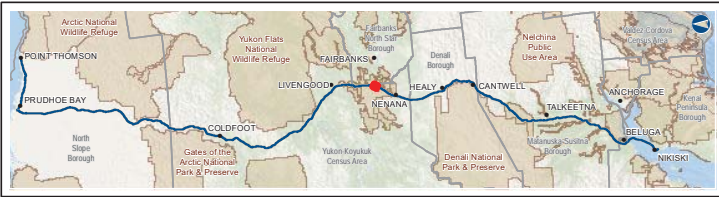
Alaska LNG Project

PRELIMINARY FACILITY LOCATIONS - MAINLINE REV C2 ROUTE

ALASKA LNG



B-100



PIPELINE		EXISTING FEATURES	
	Mainline Pipeline		Existing Roads
	Access Road - Gravel		Revised Statute 2477 Trail
	Mainline Blockvalve		Off Road Trails
	Helipad		Borough / Census Area
	Permanent ROW		Conservation Lands
	Construction ROW		Section
	ATWS		Township
	Disposal Site		
	Material Site Study Area (MSSA)		

ALASKA LNG PROJECT Preliminary Facility Locations Mainline Rev C2 Route			
CENSUS AREA: YUKON-KOYUKUK	DRAWN BY: AGDC	STATE: ALASKA	CHECKED BY:
REV. NO.	REVISION	DATE	
A	ISSUED FOR REVIEW	2017-03-10	
<b>PRELIMINARY</b>			
1:24,000			
DATE: 2017-03-10    PROJECT: NAD83 NSRS2007 ALASKAZONE4 FTUS 54392			

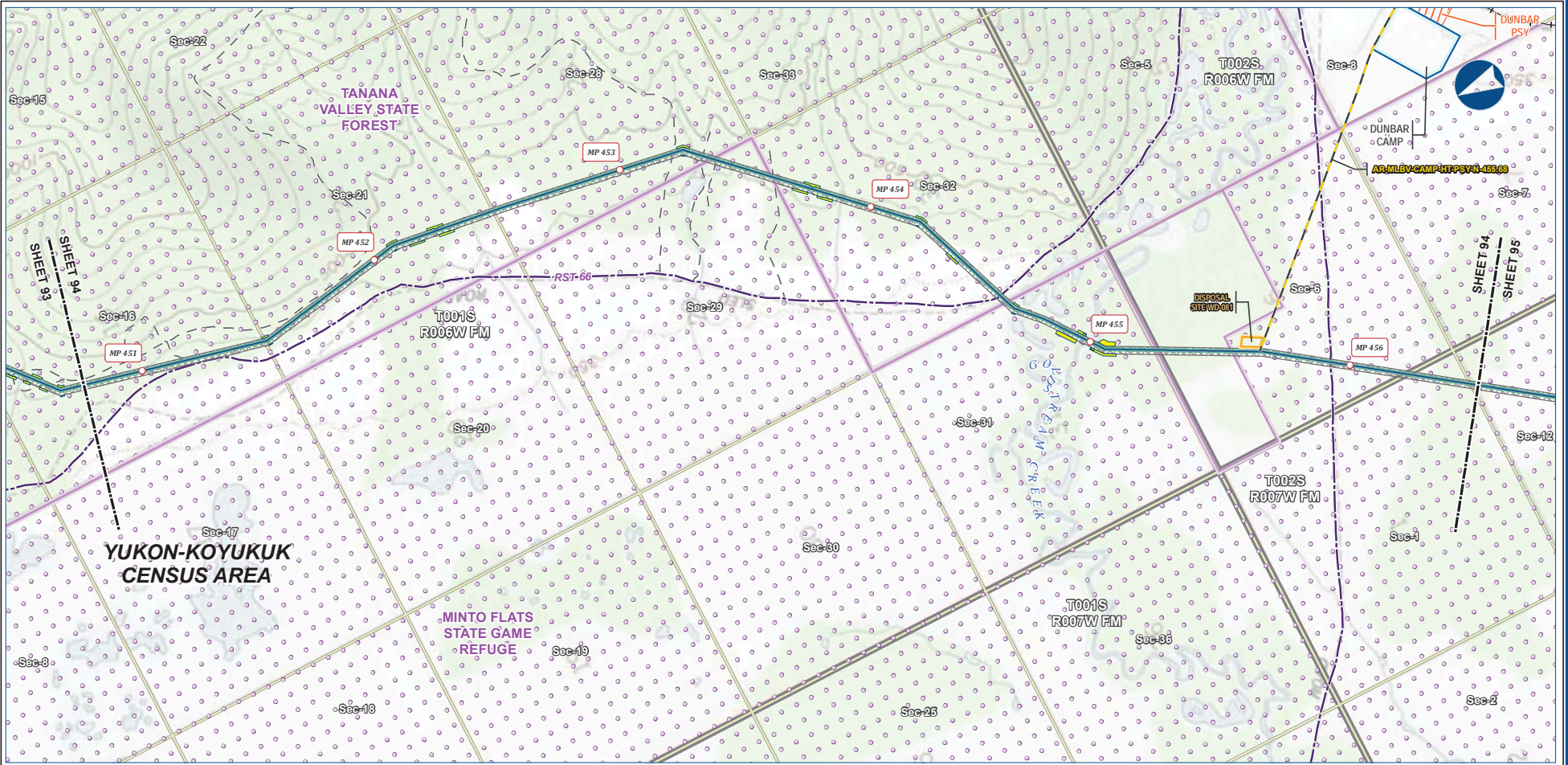
**DISCLAIMER**

The information contained herein is for informational or planning purposes only. It does not nor should it be deemed to be an offer, request or proposals for rights or occupation of any kind. The Alaska LNG Project Participants and their respective officers, employees and agents, make no warranty, implied or otherwise, nor accept any liability, as to the accuracy or completeness of the information contained in these documents, drawings or electronic files. Do not remove or delete this note from document, drawing or electronic file.

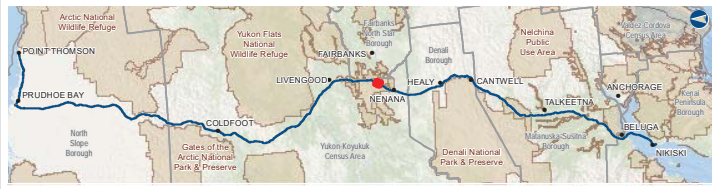
Alaska LNG Project

PRELIMINARY FACILITY LOCATIONS - MAINLINE REV C2 ROUTE

ALASKA LNG



B-101



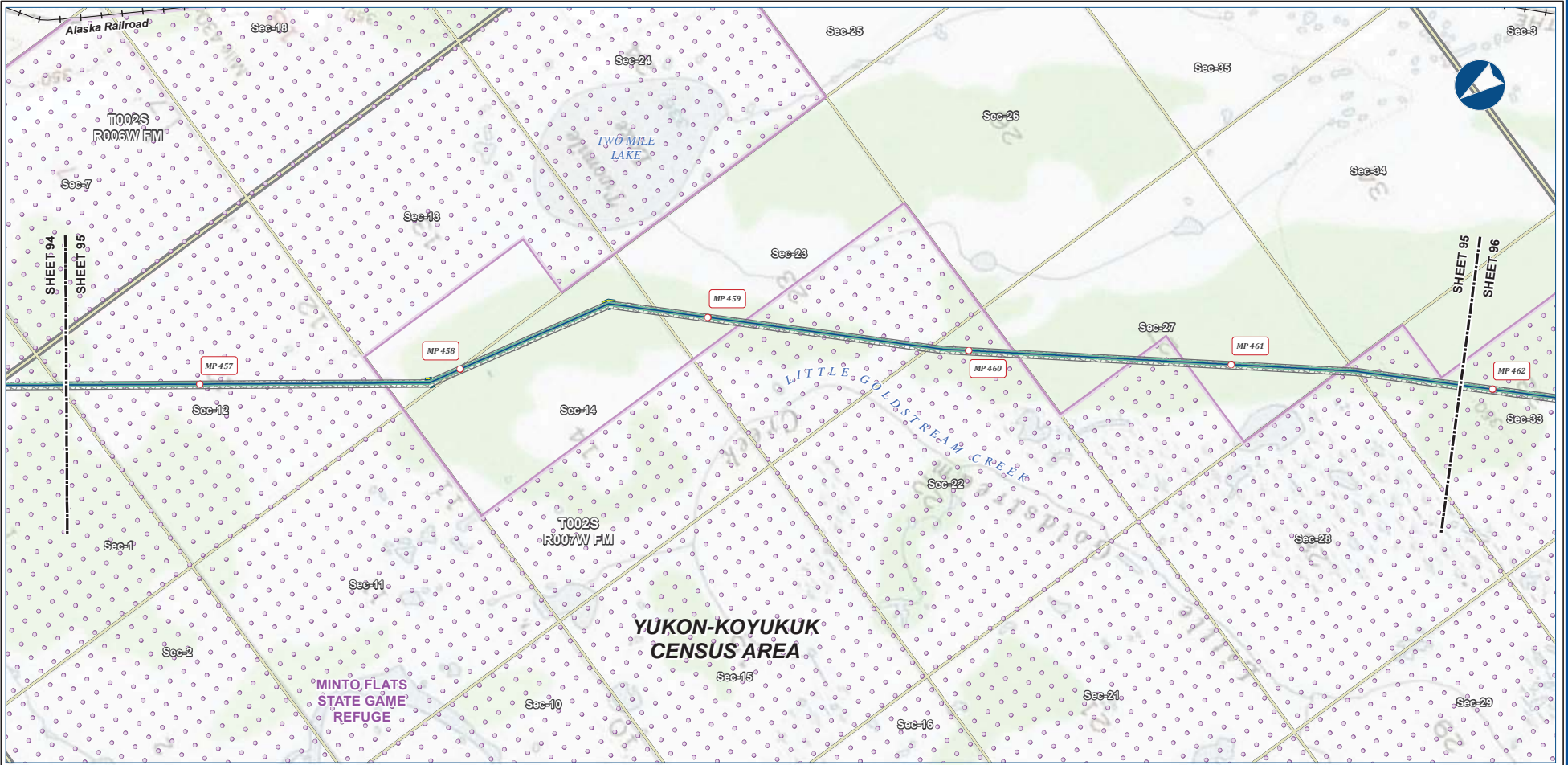
Legend		EXISTING FEATURES	
Mainline Pipeline	Permanent ROW	Existing Roads	Railroad
Access Road - Gravel	Construction ROW	Revised Statute 2477 Trail	Off Road Trails
	ATWS	Conservation Lands	Section
	Off ROW Camp	Pipe Storage Yard (PSY)	Township
	Disposal Site		

ALASKA LNG PROJECT Preliminary Facility Locations Mainline Rev C2 Route			
CENSUS AREA: YUKON-KOYUKUK	DRAWN BY: AGDC	STATE: ALASKA	CHECKED BY:
REV. NO.: A	REVISION: ISSUED FOR REVIEW	DATE: 2017-03-10	
<b>PRELIMINARY</b>			
1:24,000			
DATE: 2017-03-10	PROJECTION: NAD83 NSRS2007 ALASKAZONE4 FTUS S4392	DWG: RR-1_APPENDIX_A1_MAINLINE_TOPO_REV_C2_CL	SHEET: 94

**DISCLAIMER**

The information contained herein is for informational or planning purposes only. It does not nor should it be deemed to be an offer, request or proposals for rights or occupation of any kind. The Alaska LNG Project Participants and their respective officers, employees and agents, make no warranty, implied or otherwise, nor accept any liability, as to the accuracy or completeness of the information contained in these documents, drawings or electronic files. Do not remove or delete this note from document, drawing or electronic file.

Alaska LNG Project



B-102



**Legend**

Mainline Pipeline	Permanent ROW	Existing Roads
Construction ROW	ATWS	Railroad
		Conservation Lands
		Section
		Township

**ALASKA LNG PROJECT**  
 Preliminary Facility Locations  
 Mainline Rev C2 Route

CENSUS AREA: YUKON-KOYUKUK	DRAWN BY: AGDC
STATE: ALASKA	CHECKED BY:
REV. NO.: A	REVISION: ISSUED FOR REVIEW
	DATE: 2017-03-10
<b>PRELIMINARY</b>	
1:24,000	
0 1/4 1/2 3/4 1 Mile	
DATE: 2017-03-10	PROJECTION: NAD83 NSRS2007 ALASKAZONE4 FTUS 54392

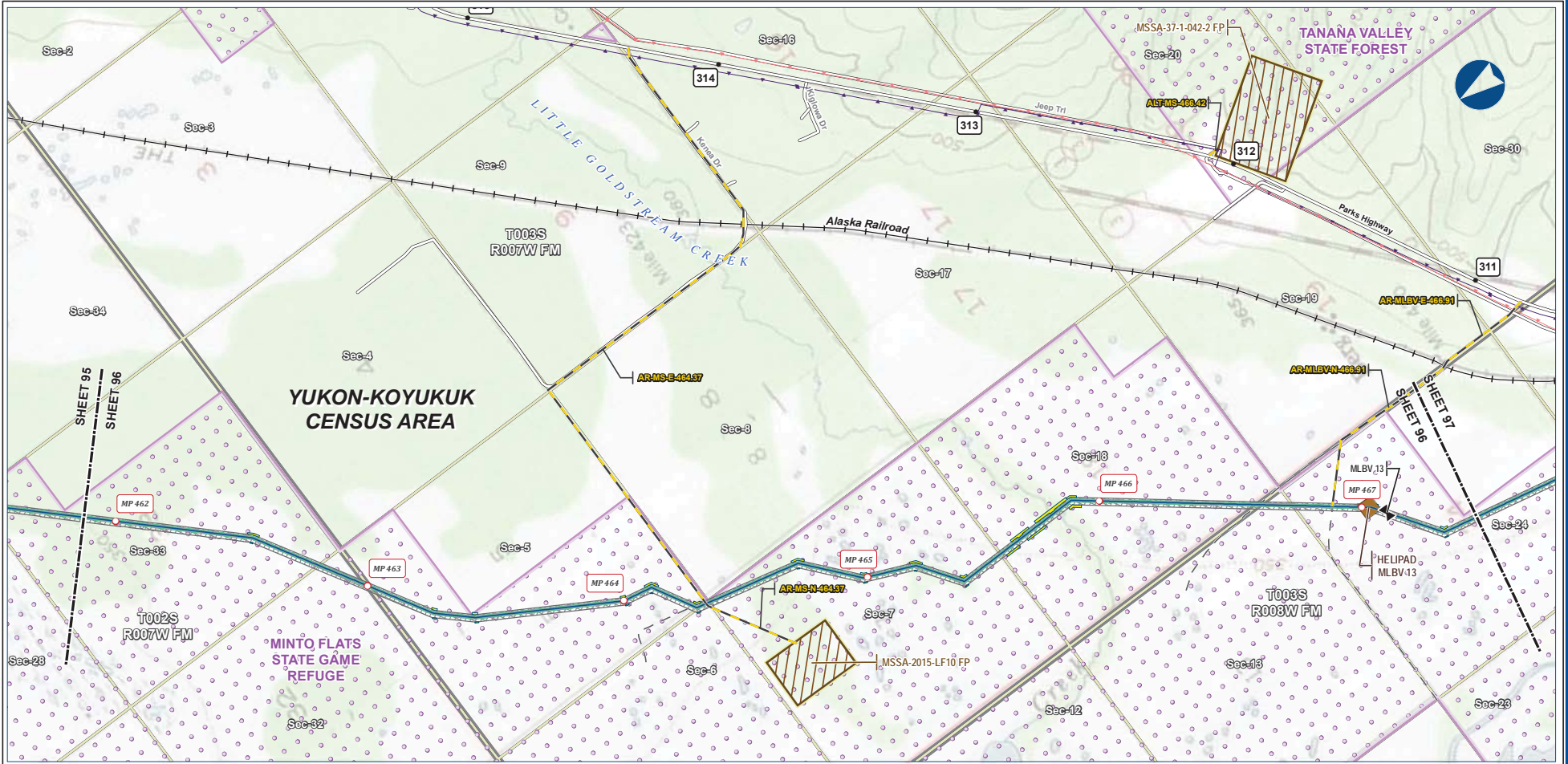
**DISCLAIMER**

The information contained herein is for informational or planning purposes only. It does not nor should it be deemed to be an offer, request or proposals for rights or occupation of any kind. The Alaska LNG Project Participants and their respective officers, employees and agents, make no warranty, implied or otherwise, nor accept any liability, as to the accuracy or completeness of the information contained in these documents, drawings or electronic files. Do not remove or delete this note from document, drawing or electronic file.

DWG: RR-1\_APPENDIX\_A1\_MAINLINE\_TOPO\_REV\_C2\_CL SHEET: 95

PRELIMINARY FACILITY LOCATIONS - MAINLINE REV C2 ROUTE

ALASKA LNG



B-103



PIPELINE		EXISTING FEATURES	
	Mainline Pipeline		Existing Roads
	Access Road - Gravel		Railroad
	Mainline Blockvalve		Off Road Trails
	Helipad		Buried Cable
	Permanent ROW		Overhead Powerline
	Construction ROW		Conservation Lands
	ATWS		Section
	Material Site Study Area (MSSA)		Township

ALASKA LNG PROJECT Preliminary Facility Locations Mainline Rev C2 Route			
CENSUS AREA:	YUKON-KOYUKUK	DRAWN BY:	AGDC
STATE:	ALASKA	CHECKED BY:	
REV. NO.:	REVISION	DATE	
A	ISSUED FOR REVIEW	2017-03-10	
<b>PRELIMINARY</b>			
1:24,000			
DATE:	2017-03-10	PROJECTION:	NAD83 NRSR2007 ALASKAZONE4 FTUS 54392

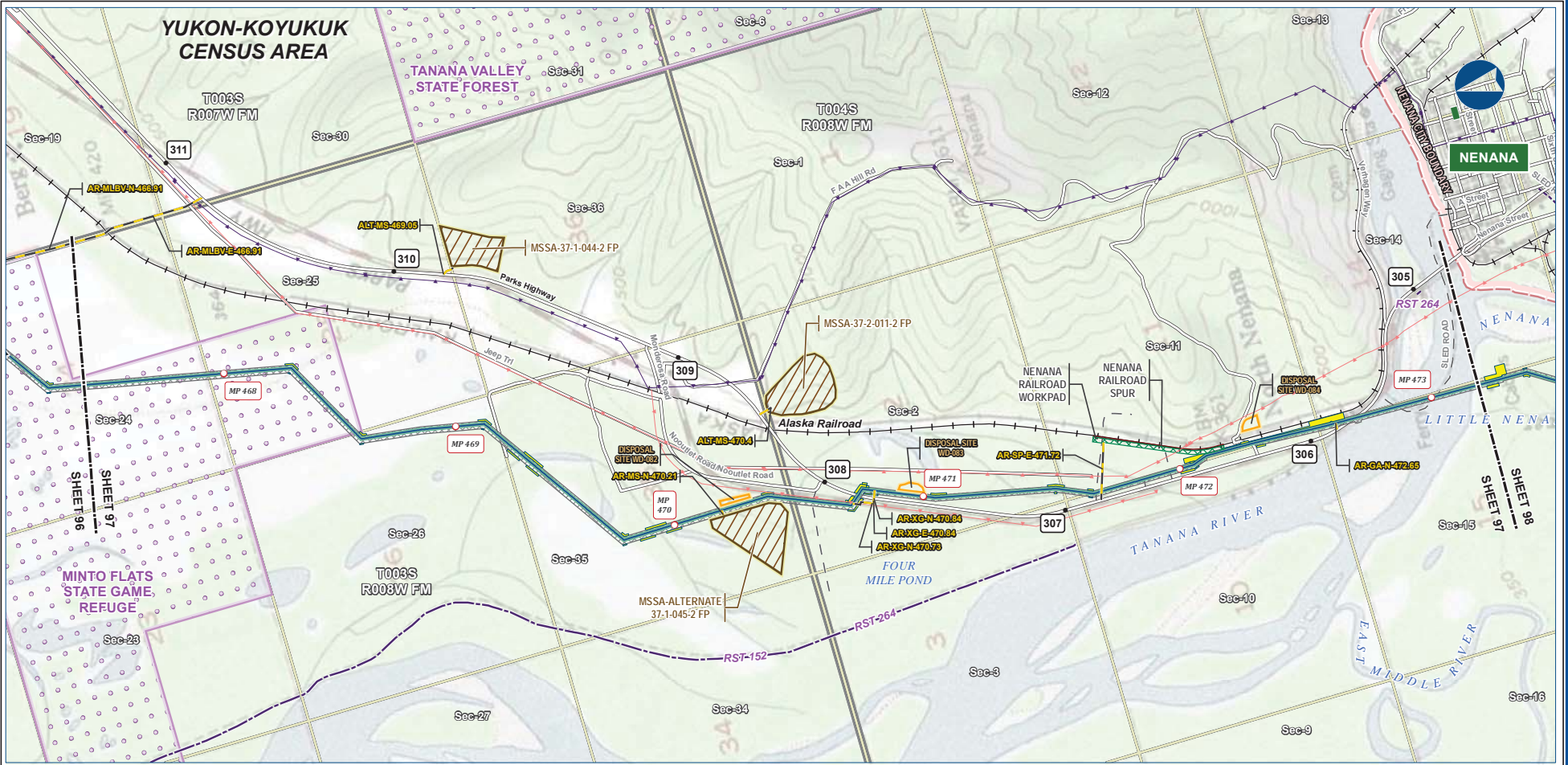
**DISCLAIMER**

The information contained herein is for informational or planning purposes only. It does not nor should it be deemed to be an offer, request or proposals for rights or occupation of any kind. The Alaska LNG Project Participants and their respective officers, employees and agents, make no warranty, implied or otherwise, nor accept any liability, as to the accuracy or completeness of the information contained in these documents, drawings or electronic files. Do not remove or delete this note from document, drawing or electronic file.

Alaska LNG Project

PRELIMINARY FACILITY LOCATIONS - MAINLINE REV C2 ROUTE

ALASKA LNG



B-104



PIPELINE		EXISTING FEATURES	
	Mainline Pipeline		Existing Roads
	Construction ROW		Railroad
	Access Road - Gravel		Revised Statute 2477 Trail
	Mainline Blockvalve		Off Road Trails
	Permanent ROW		Buried Cable
	ATWS		Overhead Powerline
	Railroad Workpad		Incorporated City Boundary
	Railroad Spur		Conservation Lands
	Disposal Site		Alaska DOT Place Names
	Material Site Study Area (MSSA)		Section
			Township

ALASKA LNG PROJECT Preliminary Facility Locations Mainline Rev C2 Route			
CENSUS AREA:	YUKON-KOYUKUK	DRAWN BY:	AGDC
STATE:	ALASKA	CHECKED BY:	
REV. NO.:	REVISION	DATE	
A	ISSUED FOR REVIEW	2017-03-10	
<b>PRELIMINARY</b>			
1:24,000			
DATE:	2017-03-10	PROJECTION:	NAD83 NSRS2007 ALASKAZONE4 FTUS 54392

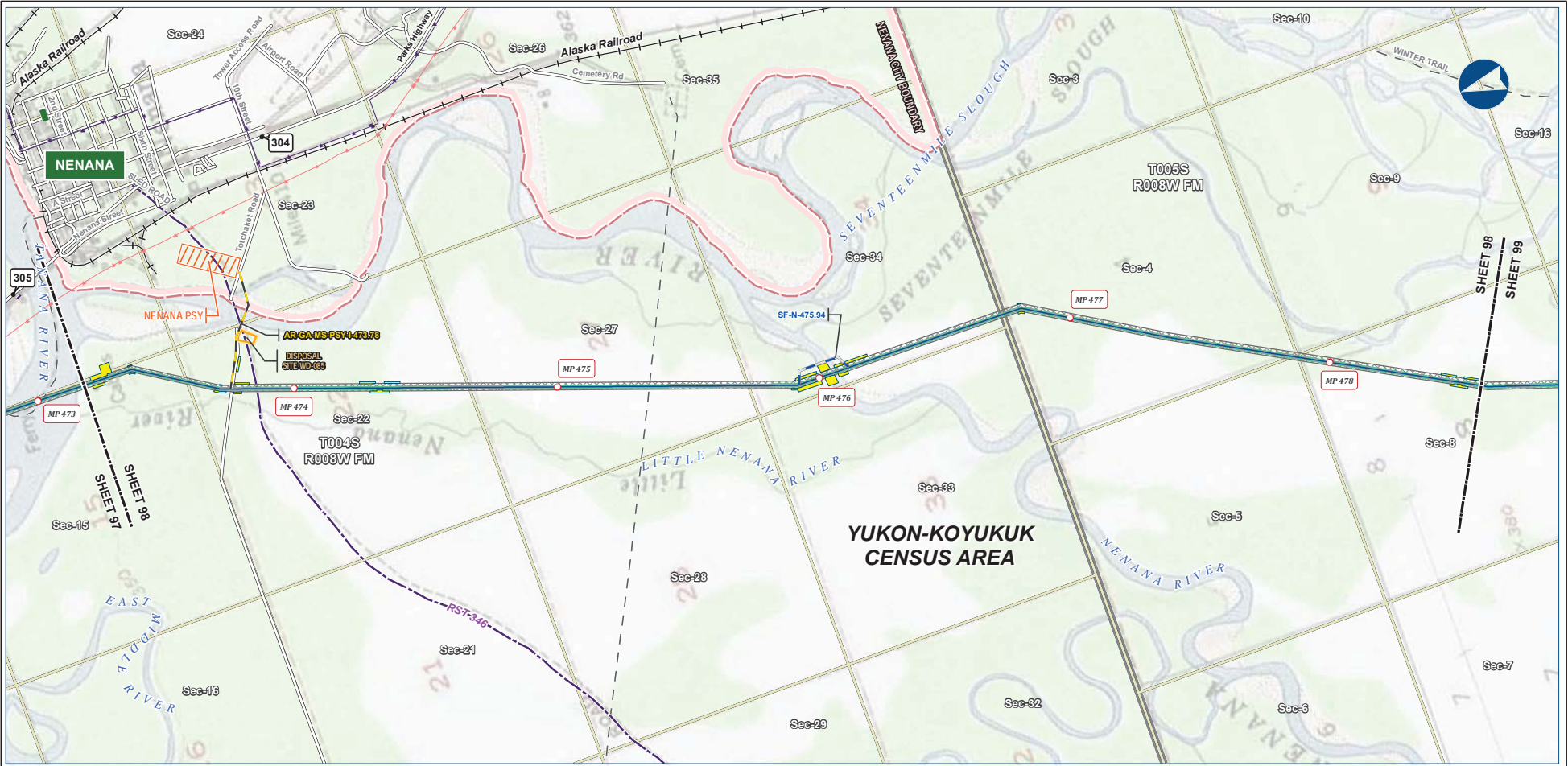
**DISCLAIMER**

The information contained herein is for informational or planning purposes only. It does not nor should it be deemed to be an offer, request or proposals for rights or occupation of any kind. The Alaska LNG Project Participants and their respective officers, employees and agents, make no warranty, implied or otherwise, nor accept any liability, as to the accuracy or completeness of the information contained in these documents, drawings or electronic files. Do not remove or delete this note from document, drawing or electronic file.

Alaska LNG Project

PRELIMINARY FACILITY LOCATIONS - MAINLINE REV C2 ROUTE

ALASKA LNG



B-105



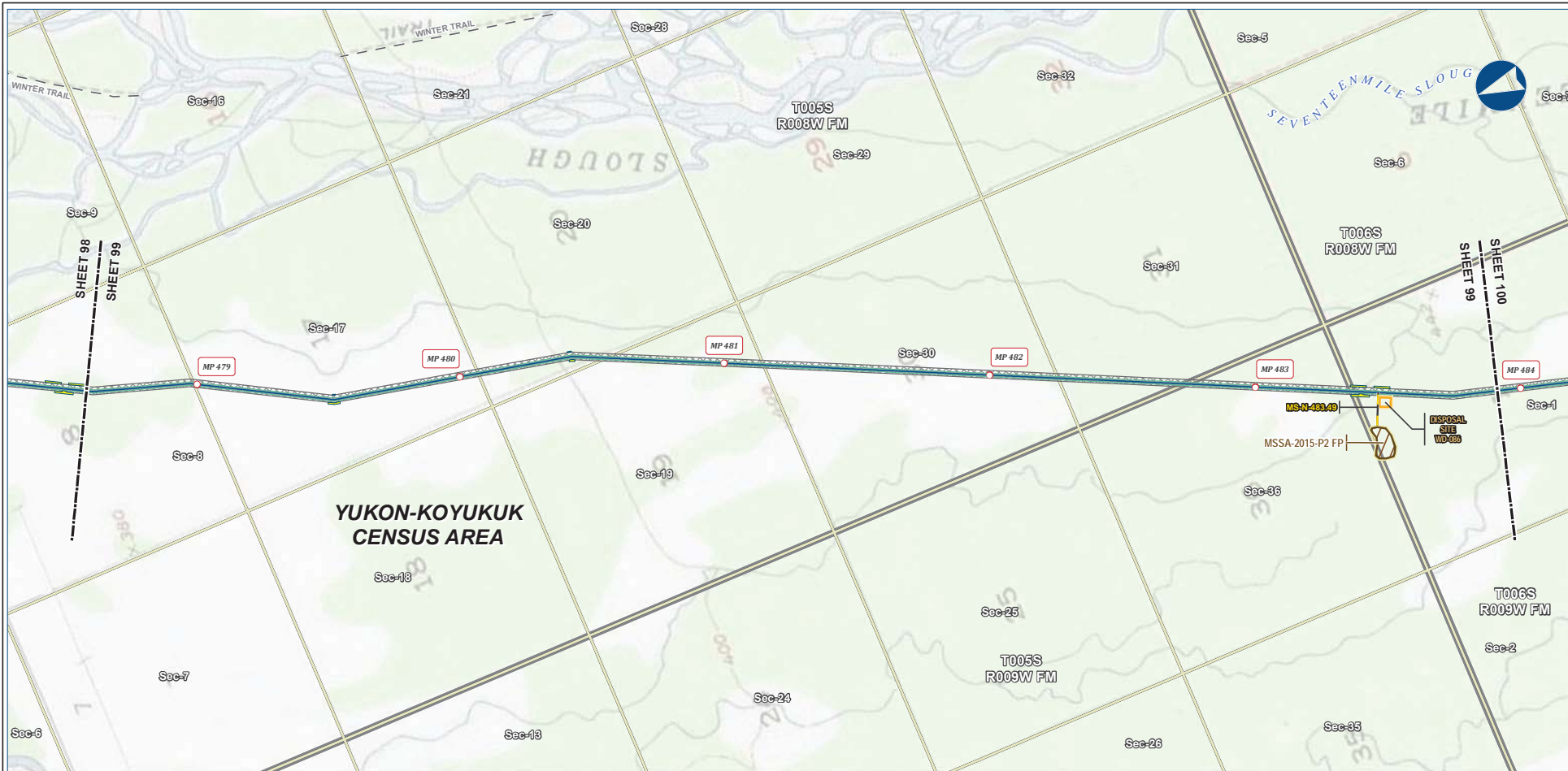
Legend		EXISTING FEATURES	
	Mainline Pipeline		Existing Roads
	Construction ROW		Railroad
	Access Road - Gravel		Revised Statute 2477 Trail
	Access Road - Ice		Off Road Trails
	Pipe Storage Yard (PSY)		Buried Cable
	Disposal Site		Overhead Powerline
			Incorporated City Boundary
			Alaska DOT Place Names
			Section
			Township

ALASKA LNG PROJECT Preliminary Facility Locations Mainline Rev C2 Route			
CENSUS AREA:	YUKON-KOYUKUK	DRAWN BY:	AGDC
STATE:	ALASKA	CHECKED BY:	
REV. NO.:	REVISION	DATE	
A	ISSUED FOR REVIEW	2017-03-10	
<b>PRELIMINARY</b>			
1:24,000			
DATE:	2017-03-10	PROJECTION:	NAD83 NSRS2007 ALASKAZONE4 FTUS 54392

**DISCLAIMER**

The information contained herein is for informational or planning purposes only. It does not nor should it be deemed to be an offer, request or proposals for rights or occupation of any kind. The Alaska LNG Project Participants and their respective officers, employees and agents, make no warranty, implied or otherwise, nor accept any liability, as to the accuracy or completeness of the information contained in these documents, drawings or electronic files. Do not remove or delete this note from document, drawing or electronic file.

Alaska LNG Project



B-106



**Legend**

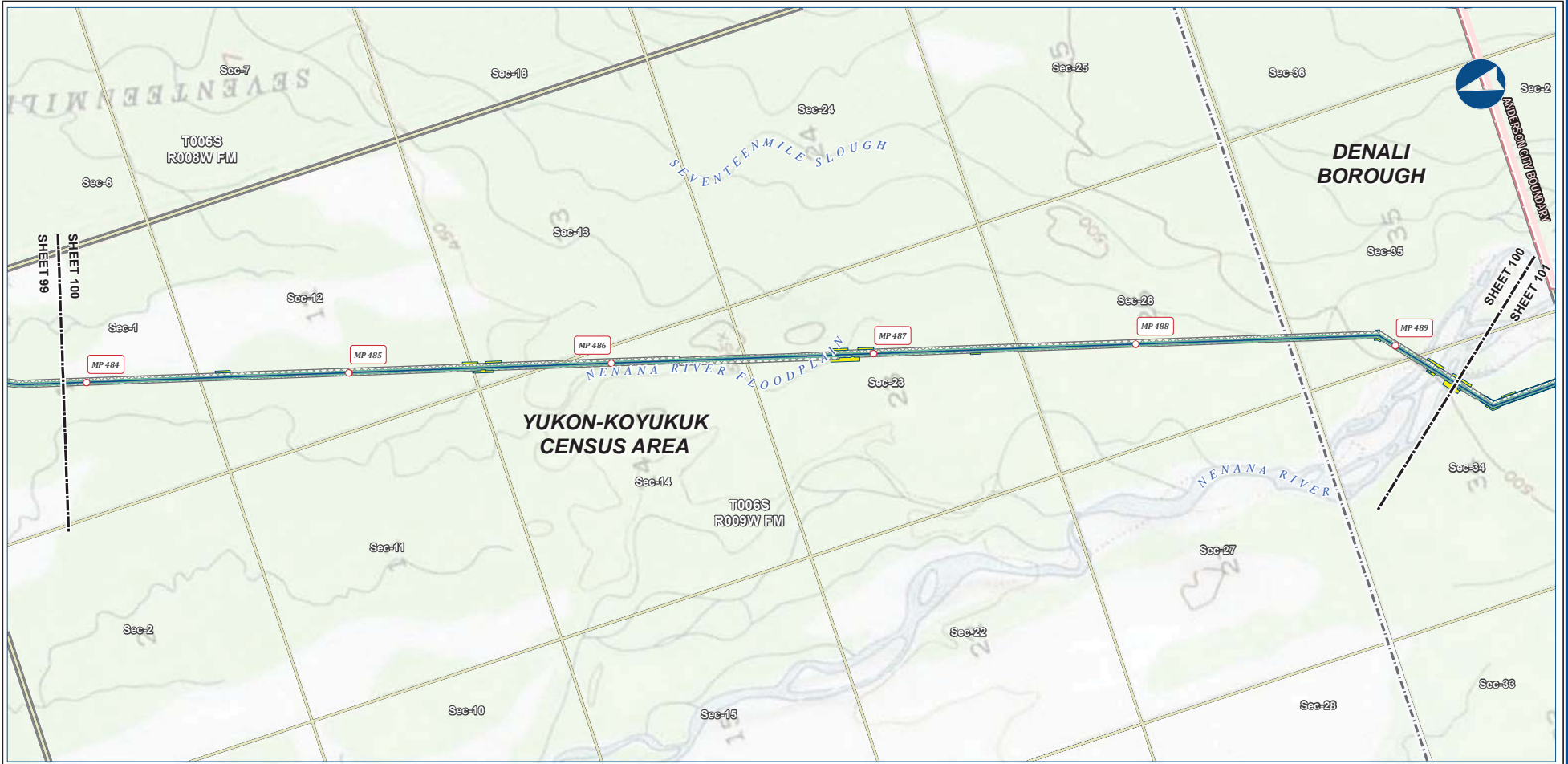
Mainline Pipeline	Permanent ROW	Existing Roads
Access Road - Gravel	Construction ROW	Off Road Trails
	ATWS	Section
	Disposal Site	Township
	Material Site Study Area (MSSA)	

**ALASKA LNG PROJECT**  
Preliminary Facility Locations  
Mainline Rev C2 Route

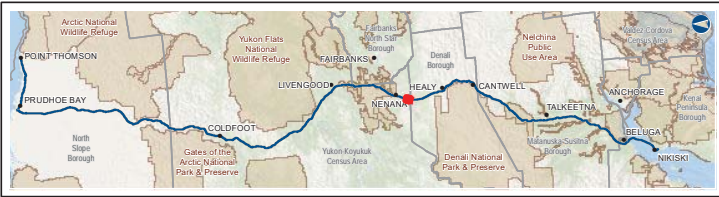
CENSUS AREA: YUKON-KOYUKUK	DRAWN BY: AGDC
STATE: ALASKA	CHECKED BY:
REV. NO.: A	ISSUED FOR REVIEW
REVISION	DATE
	2017-03-10
<b>PRELIMINARY</b>	
1:24,000	
0 10 20 Miles	
DATE: 2017-03-10	PROJECTION: NAD83 NSRS2007 ALASKAZONE4 FTUS 54392

**DISCLAIMER**

The information contained herein is for informational or planning purposes only. It does not nor should it be deemed to be an offer, request or proposals for rights or occupation of any kind. The Alaska LNG Project Participants and their respective officers, employees and agents, make no warranty, implied or otherwise, nor accept any liability, as to the accuracy or completeness of the information contained in these documents, drawings or electronic files. Do not remove or delete this note from document, drawing or electronic file.



B-107



Legend		EXISTING FEATURES	
Mainline Pipeline	Permanent ROW	Existing Roads	Borough / Census Area
Construction ROW	ATWS	Off Road Trails	Incorporated City Boundary
		Section	Township

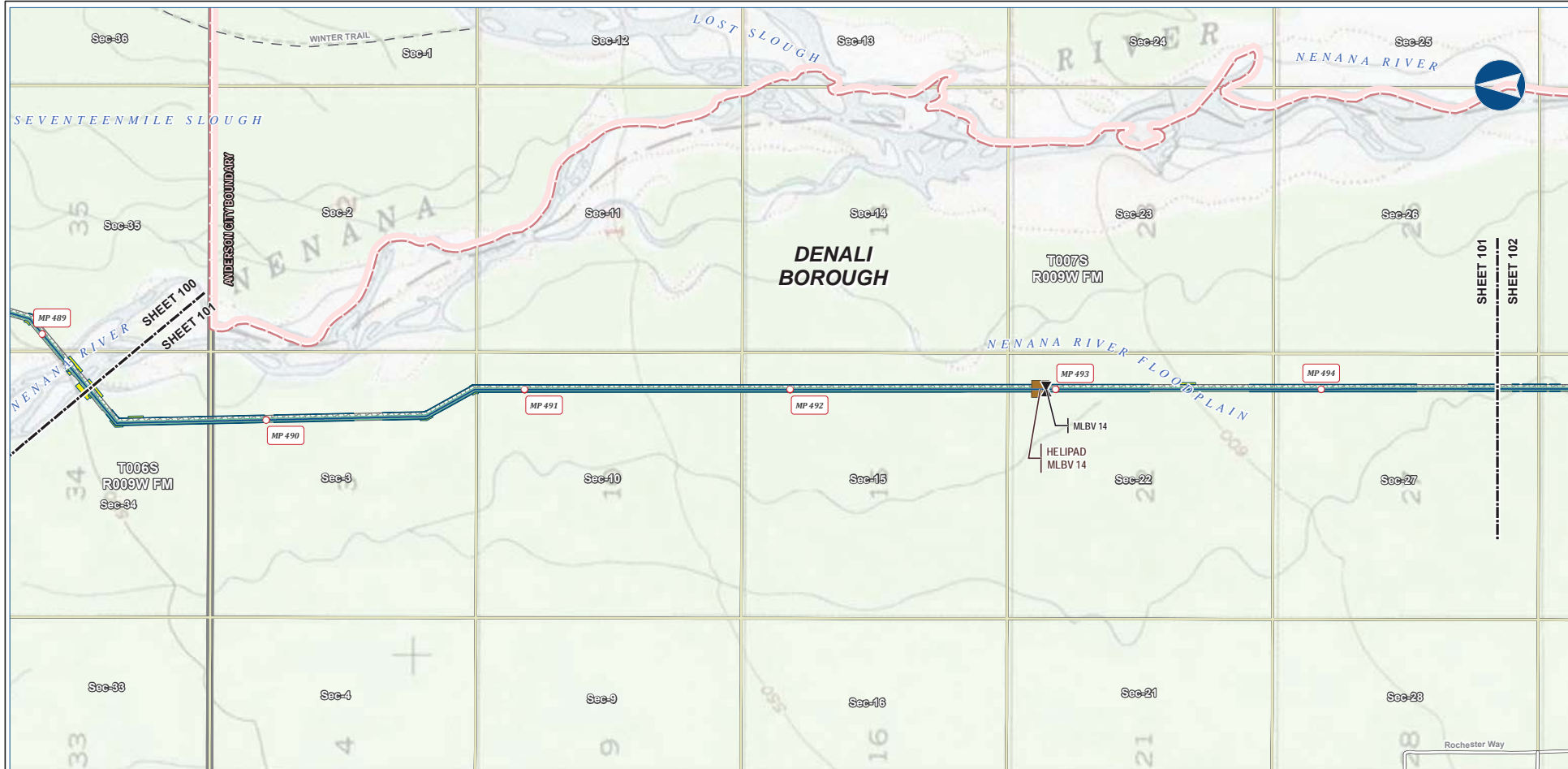
ALASKA LNG PROJECT Preliminary Facility Locations Mainline Rev C2 Route			
CENSUS AREA:	YUKON-KOYUKUK	DRAWN BY:	AGDC
STATE:	ALASKA	CHECKED BY:	
REV. NO.:	A	REVISION	ISSUED FOR REVIEW
		DATE	2017-03-10
<b>PRELIMINARY</b>			
1:24,000			
DATE:	2017-03-10	PROJECTION:	NAD83 NRSR2007 ALASKAZONE4 FTUS S4392

**DISCLAIMER**

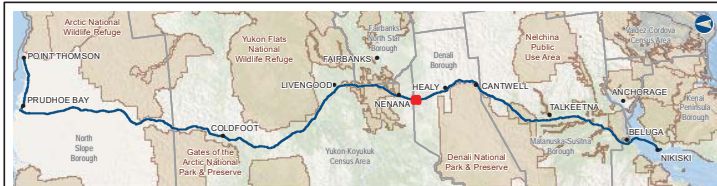
The information contained herein is for informational or planning purposes only. It does not nor should it be deemed to be an offer, request or proposals for rights or occupation of any kind. The Alaska LNG Project Participants and their respective officers, employees and agents, make no warranty, implied or otherwise, nor accept any liability, as to the accuracy or completeness of the information contained in these documents, drawings or electronic files. Do not remove or delete this note from document, drawing or electronic file.

PRELIMINARY FACILITY LOCATIONS - MAINLINE REV C2 ROUTE

ALASKA LNG



B-108



**Legend**

Mainline Pipeline	Permanent ROW	Existing Roads
Mainline Blockvalve	Construction ROW	Off Road Trails
Helipad	ATWS	Incorporated City Boundary
		Section
		Township

**ALASKA LNG PROJECT**  
Preliminary Facility Locations  
Mainline Rev C2 Route

BOROUGH:	DENALI	DRAWN BY:	AGDC
STATE:	ALASKA	CHECKED BY:	
REV. NO.:	A	REVISION	ISSUED FOR REVIEW
		DATE	2017-03-10
<b>PRELIMINARY</b>			
1:24,000			
DATE:	2017-03-10	PROJECTION:	NAD83 NSRS2007 ALASKAZONE4 FTUS 54392

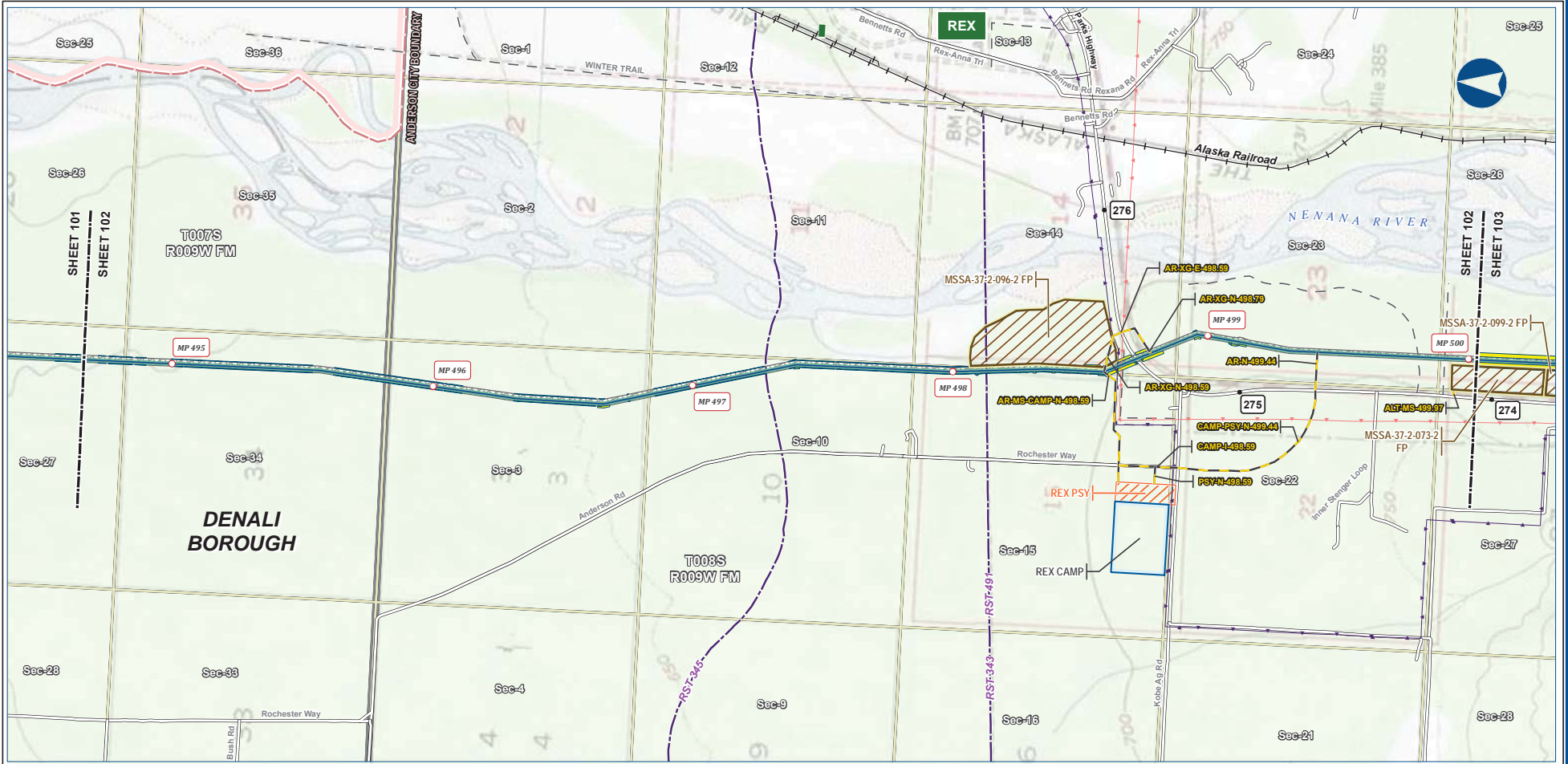
**DISCLAIMER**

The information contained herein is for informational or planning purposes only. It does not nor should it be deemed to be an offer, request or proposals for rights or occupation of any kind. The Alaska LNG Project Participants and their respective officers, employees and agents, make no warranty, implied or otherwise, nor accept any liability, as to the accuracy or completeness of the information contained in these documents, drawings or electronic files. Do not remove or delete this note from document, drawing or electronic file.

Alaska LNG Project

PRELIMINARY FACILITY LOCATIONS - MAINLINE REV C2 ROUTE

ALASKA LNG



B-109



Legend		EXISTING FEATURES	
Permanent ROW	Mainline Pipeline	Existing Roads	Railroad
Construction ROW	ATWS	Revised Statute 2477 Trail	Off Road Trails
Off ROW Camp	Pipe Storage Yard (PSY)	Buried Cable	Overhead Powerline
Material Site Study Area (MSSA)		Incorporated City Boundary	Alaska DOT Place Names
		Section	Township

ALASKA LNG PROJECT			
Preliminary Facility Locations			
Mainline Rev C2 Route			
BOROUGH:	DENALI	DRAWN BY:	AGDC
STATE:	ALASKA	CHECKED BY:	
REV. NO.:	REVISION	DATE	
A	ISSUED FOR REVIEW	2017-03-10	
<b>PRELIMINARY</b>			
1:24,000			
DATE:	2017-03-10	PROJECTION:	NAD83 NSRS2007 ALASKAZONE4 FTUS 54392

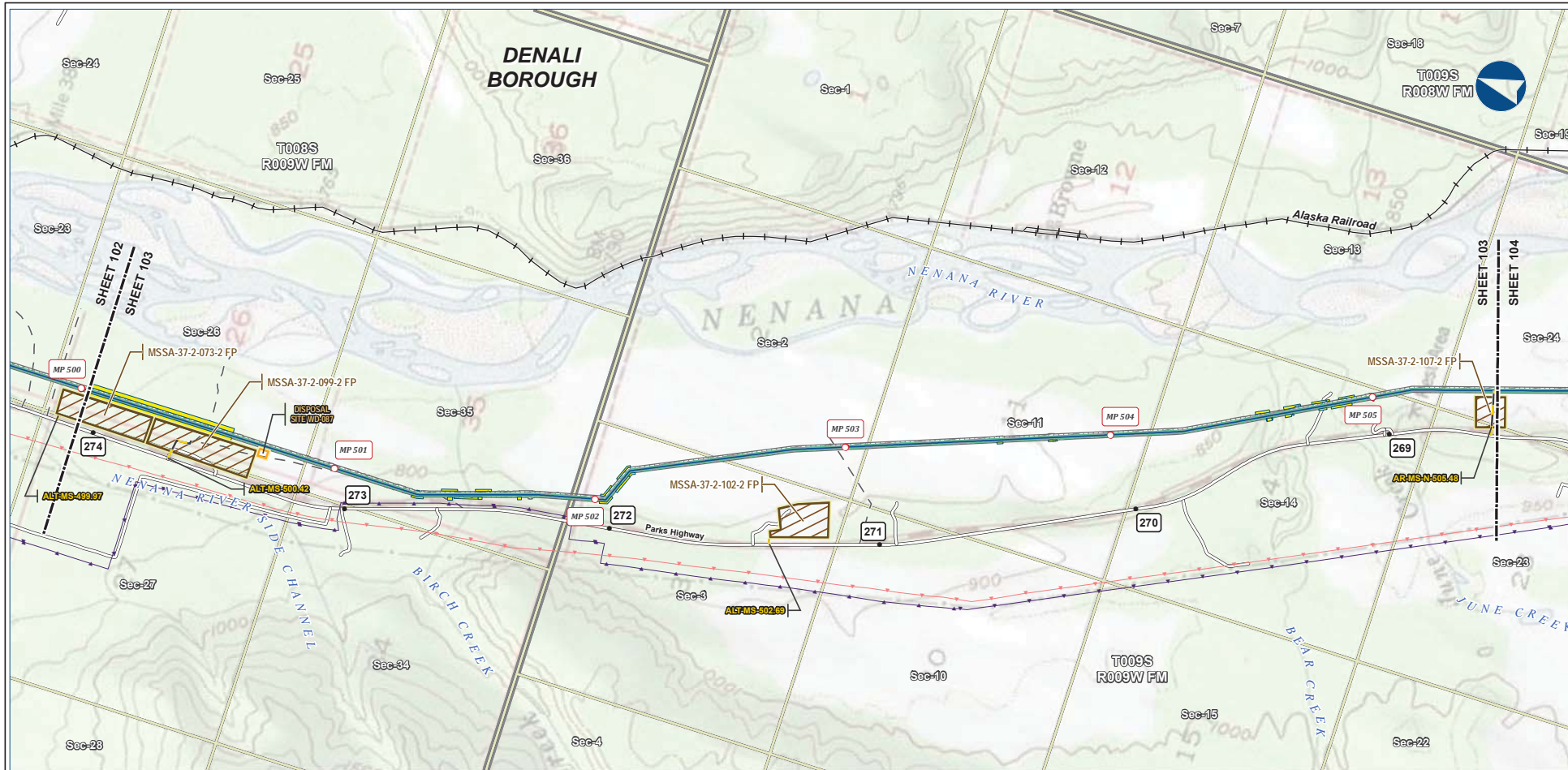
**DISCLAIMER**

The information contained herein is for informational or planning purposes only. It does not nor should it be deemed to be an offer, request or proposals for rights or occupation of any kind. The Alaska LNG Project Participants and their respective officers, employees and agents, make no warranty, implied or otherwise, nor accept any liability, as to the accuracy or completeness of the information contained in these documents, drawings or electronic files. Do not remove or delete this note from document, drawing or electronic file.

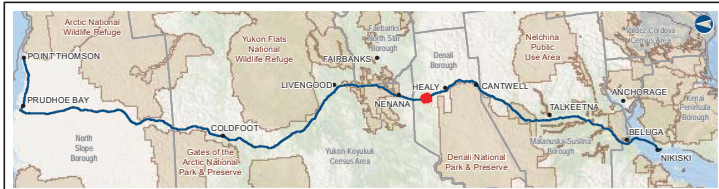
Alaska LNG Project

PRELIMINARY FACILITY LOCATIONS - MAINLINE REV C2 ROUTE

ALASKA LNG



B-110



**Legend**

Mainline Pipeline	Permanent ROW	Existing Roads
Access Road - Gravel	Construction ROW	Railroad
	ATWS	Off Road Trails
	Disposal Site	Buried Cable
	Material Site Study Area (MSSA)	Overhead Powerline
		Section
		Township

**ALASKA LNG PROJECT**  
Preliminary Facility Locations  
Mainline Rev C2 Route

BOROUGH:	DENALI	DRAWN BY:	AGDC
STATE:	ALASKA	CHECKED BY:	
REV. NO.:	REVISION	DATE	
A	ISSUED FOR REVIEW	2017-03-10	
<b>PRELIMINARY</b>			
1:24,000			
DATE:	2017-03-10	PROJECTION:	NAD83 NSRS2007 ALASKAZONE4 FTUS 54392

**DISCLAIMER**

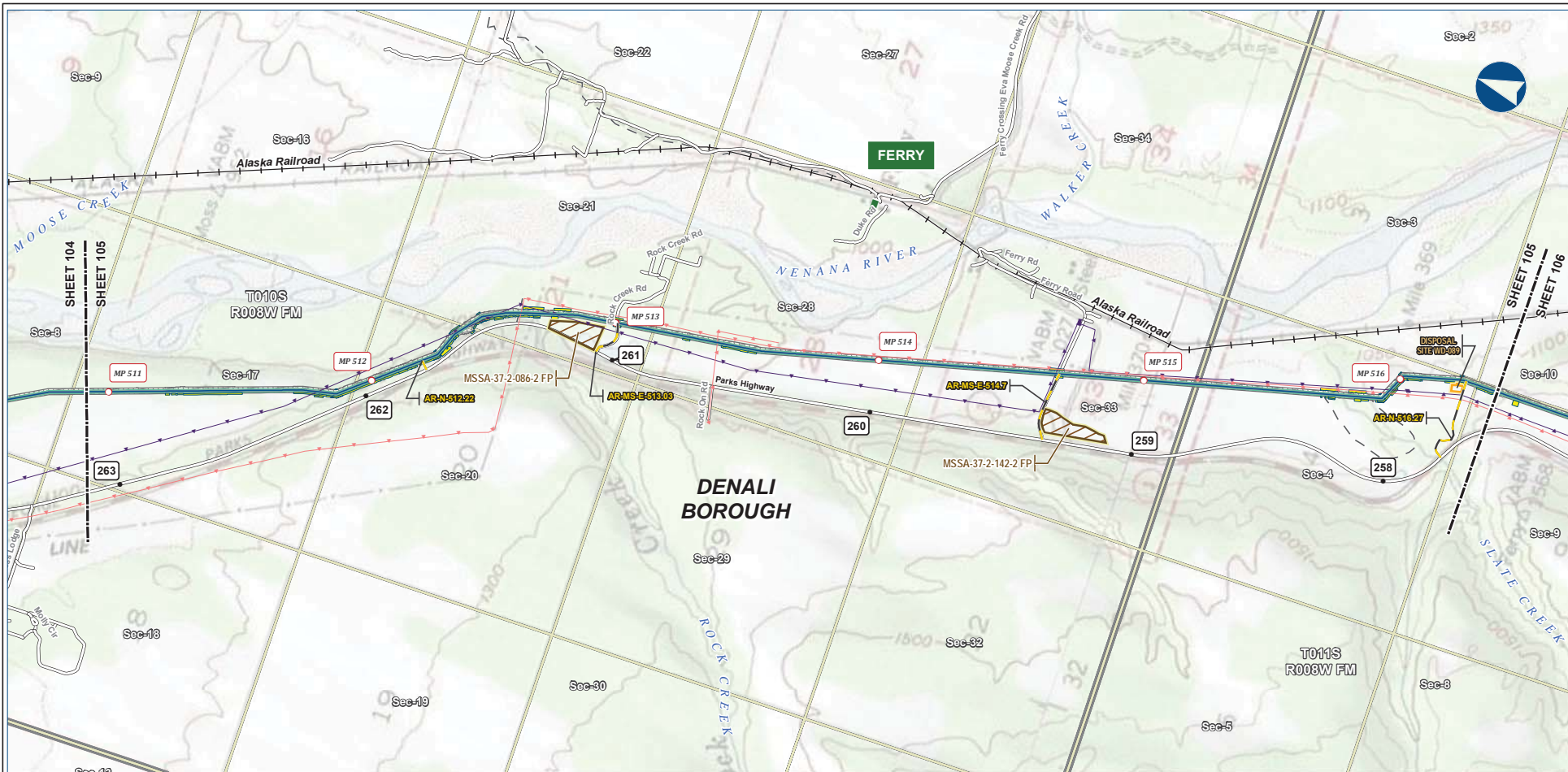
The information contained herein is for informational or planning purposes only. It does not nor should it be deemed to be an offer, request or proposals for rights or occupation of any kind. The Alaska LNG Project Participants and their respective officers, employees and agents, make no warranty, implied or otherwise, nor accept any liability, as to the accuracy or completeness of the information contained in these documents, drawings or electronic files. Do not remove or delete this note from document, drawing or electronic file.

Alaska LNG Project



PRELIMINARY FACILITY LOCATIONS - MAINLINE REV C2 ROUTE

ALASKA LNG



B-112



Legend		EXISTING FEATURES	
Mainline Pipeline	Permanent ROW	Existing Roads	Railroad
Access Road - Gravel	Construction ROW	Off Road Trails	Buried Cable
Disposal Site	ATWS	Overhead Powerline	Alaska DOT Place Names
Material Site Study Area (MSSA)	Disposal Site	Alaska DOT Place Names	Section
		Township	

ALASKA LNG PROJECT			
Preliminary Facility Locations			
Mainline Rev C2 Route			
BOROUGH:	DENALI	DRAWN BY:	AGDC
STATE:	ALASKA	CHECKED BY:	
REV. NO.:	REVISION	DATE	
A	ISSUED FOR REVIEW	2017-03-10	
<b>PRELIMINARY</b>			
1:24,000			
DATE: 2017-03-10	PROJECTION: NAD83 NSRS2007 ALASKAZONE4 FTUS 54392	DWG: RR_1_APPENDIX_A1_MAINLINE_TOPO_REV_C2_CL	SHEET: 105

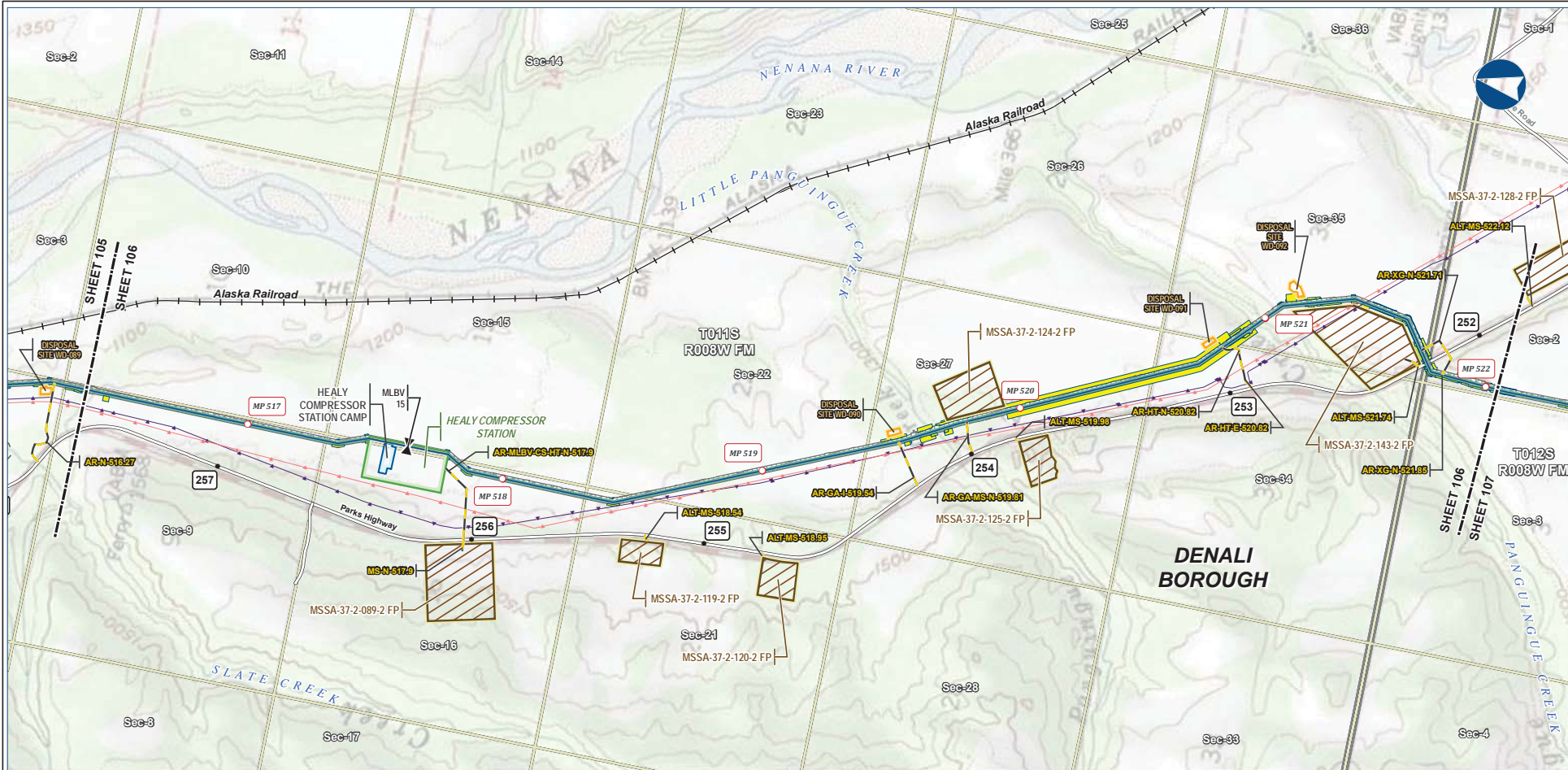
**DISCLAIMER**

The information contained herein is for informational or planning purposes only. It does not nor should it be deemed to be an offer, request or proposals for rights or occupation of any kind. The Alaska LNG Project Participants and their respective officers, employees and agents, make no warranty, implied or otherwise, nor accept any liability, as to the accuracy or completeness of the information contained in these documents, drawings or electronic files. Do not remove or delete this note from document, drawing or electronic file.

Alaska LNG Project

PRELIMINARY FACILITY LOCATIONS - MAINLINE REV C2 ROUTE

ALASKA LNG



B-113



Alaska LNG Project

Legend		EXISTING FEATURES	
Mainline Pipeline	Permanent ROW	Existing Roads	Railroad
Access Road - Gravel	Construction ROW	Off Road Trails	Buried Cable
Mainline Blockvale	ATWS	Overhead Powerline	Section
	Compressor Station	Township	
	Camp		
	Disposal Site		
	Material Site Study Area (MSSA)		

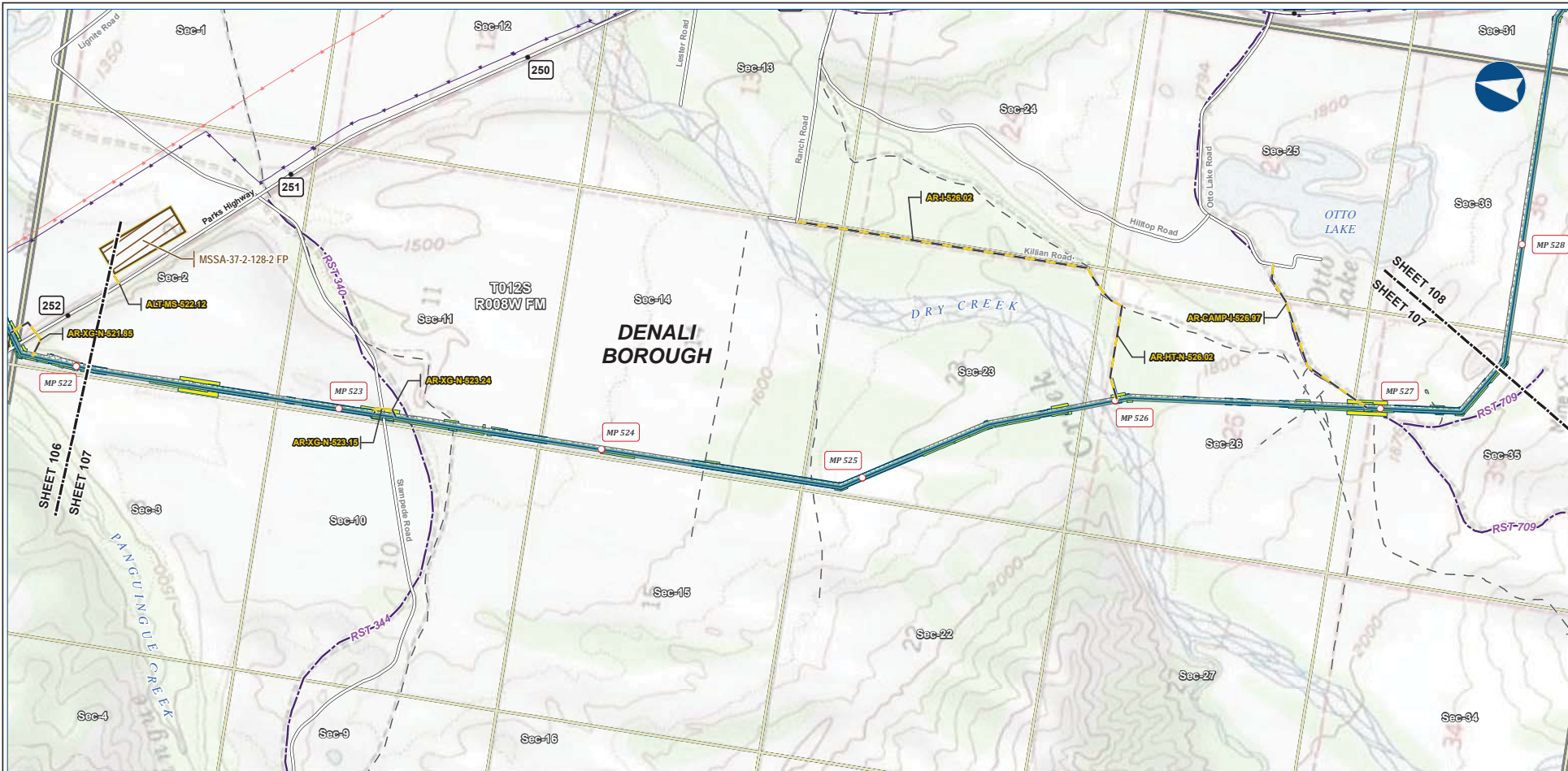
ALASKA LNG PROJECT			
Preliminary Facility Locations			
Mainline Rev C2 Route			
BOROUGH:	DENALI	DRAWN BY:	AGDC
STATE:	ALASKA	CHECKED BY:	
REV. NO.:	REVISION	DATE	
A	ISSUED FOR REVIEW	2017-03-10	
<b>PRELIMINARY</b>			
1:24,000			
DATE: 2017-03-10	PROJECTION: NAD83 NSRS2007 ALASKAZONE4 FTUS 54392	DWG: RR-1_APPENDIX_A1_MAINLINE_TOPO_REV_C2_CL	SHEET: 106

**DISCLAIMER**

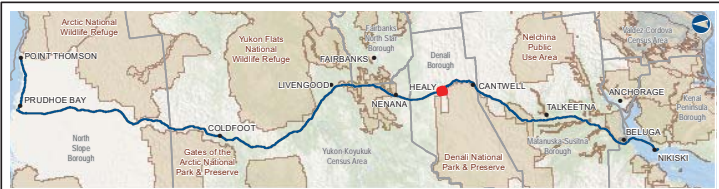
The information contained herein is for informational or planning purposes only. It does not nor should it be deemed to be an offer, request or proposals for rights or occupation of any kind. The Alaska LNG Project Participants and their respective officers, employees and agents, make no warranty, implied or otherwise, nor accept any liability, as to the accuracy or completeness of the information contained in these documents, drawings or electronic files. Do not remove or delete this note from document, drawing or electronic file.

PRELIMINARY FACILITY LOCATIONS - MAINLINE REV C2 ROUTE

ALASKA LNG



B-114



Legend		EXISTING FEATURES	
Mainline Pipeline	Permanent ROW	Existing Roads	Revised Statute 2477 Trail
Access Road - Gravel	Construction ROW	Off Road Trails	Buried Cable
Material Site Study Area (MSSA)	ATWS	Overhead Powerline	Section
		Township	

ALASKA LNG PROJECT Preliminary Facility Locations Mainline Rev C2 Route			
BOROUGH:	DENALI	DRAWN BY:	AGDC
STATE:	ALASKA	CHECKED BY:	
REV. NO.:	REVISION	DATE	
A	ISSUED FOR REVIEW	2017-03-10	
<b>PRELIMINARY</b>			
1:24,000			
DATE:	2017-03-10	PROJECTION:	NAD83 NSRS2007 ALASKAZONE4 FTUS 54392

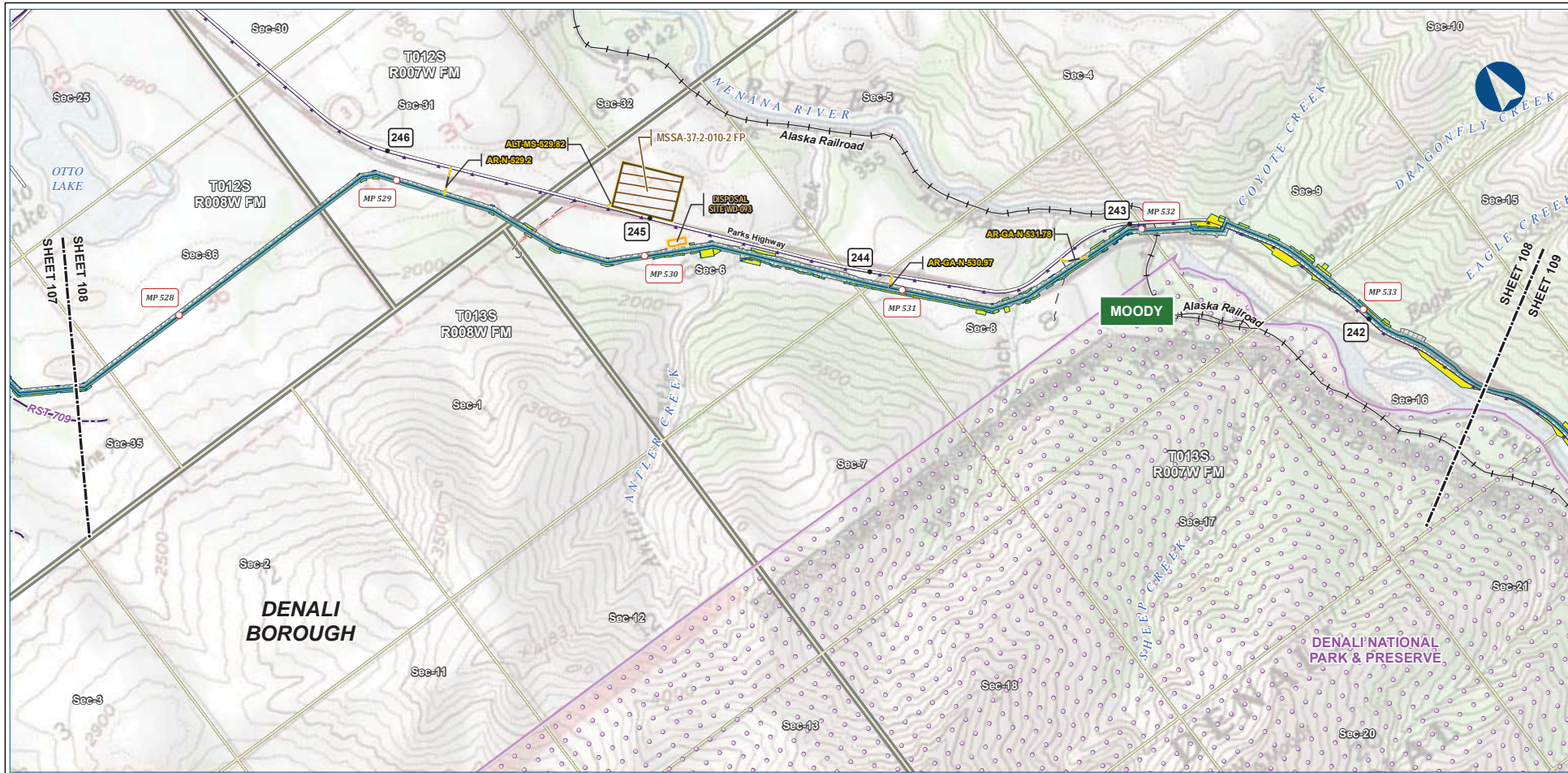
**DISCLAIMER**

The information contained herein is for informational or planning purposes only. It does not nor should it be deemed to be an offer, request or proposals for rights or occupation of any kind. The Alaska LNG Project Participants and their respective officers, employees and agents, make no warranty, implied or otherwise, nor accept any liability, as to the accuracy or completeness of the information contained in these documents, drawings or electronic files. Do not remove or delete this note from document, drawing or electronic file.

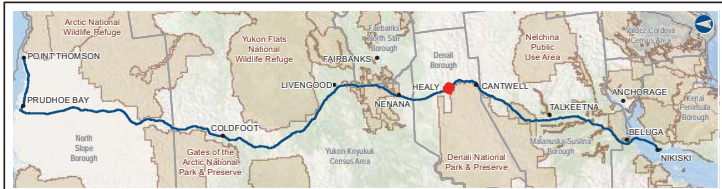
Alaska LNG Project

PRELIMINARY FACILITY LOCATIONS - MAINLINE REV C2 ROUTE

ALASKA LNG



B-115



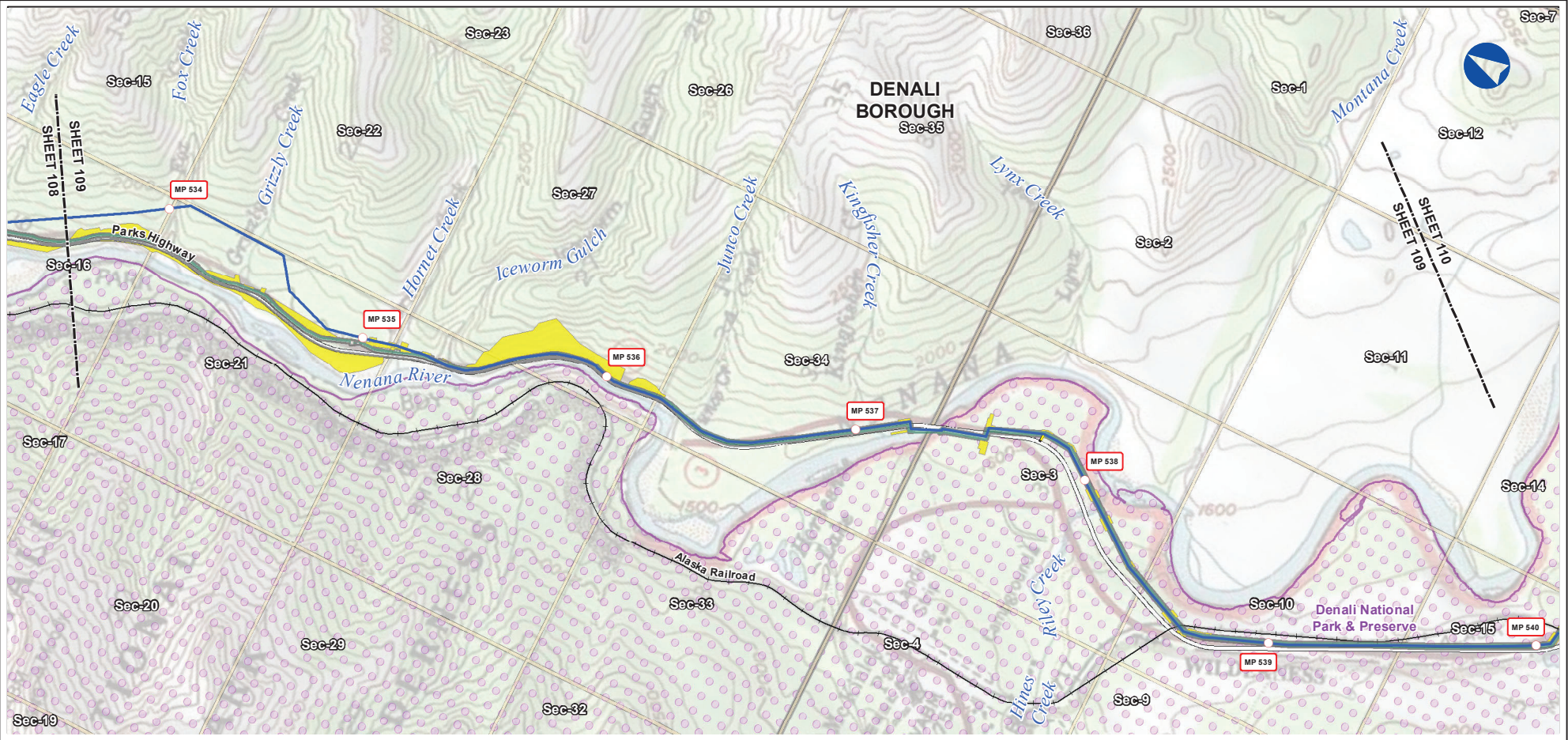
PIPELINE		EXISTING FEATURES	
	Mainline Pipeline		Existing Road
	Construction ROW		Railroad
	Access Road - Gravel		Revised Statute 2477 Trail
	Permanent ROW		Off Road Trails
	ATWS		Buried Cable
	Disposal Site		Overhead Powerline
	Material Site Study Area (MSSA)		Conservation Lands
			Alaska DOT Place Names
			Section
			Township

ALASKA LNG PROJECT			
Preliminary Facility Locations			
Mainline Rev C2 Route			
BOROUGH:	DENALI	DRAWN BY:	AGDC
STATE:	ALASKA	CHECKED BY:	
REV. NO.:	REVISION	DATE	
A	ISSUED FOR REVIEW	2017-03-10	
<b>PRELIMINARY</b>			
1:24,000			
DATE:	2017-03-10	PRODUCTION:	MAD83 NSRS2007 ALASKAZONE4 FTUS 54392

**DISCLAIMER**

The information contained herein is for informational or planning purposes only. It does not nor should it be deemed to be an offer, request or proposals for rights or occupation of any kind. The Alaska LNG Project Participants and their respective officers, employees and agents, make no warranty, implied or otherwise, nor accept any liability, as to the accuracy or completeness of the information contained in these documents, drawings or electronic files. Do not remove or delete this note from document, drawing or electronic file.

Alaska LNG Project



B-116



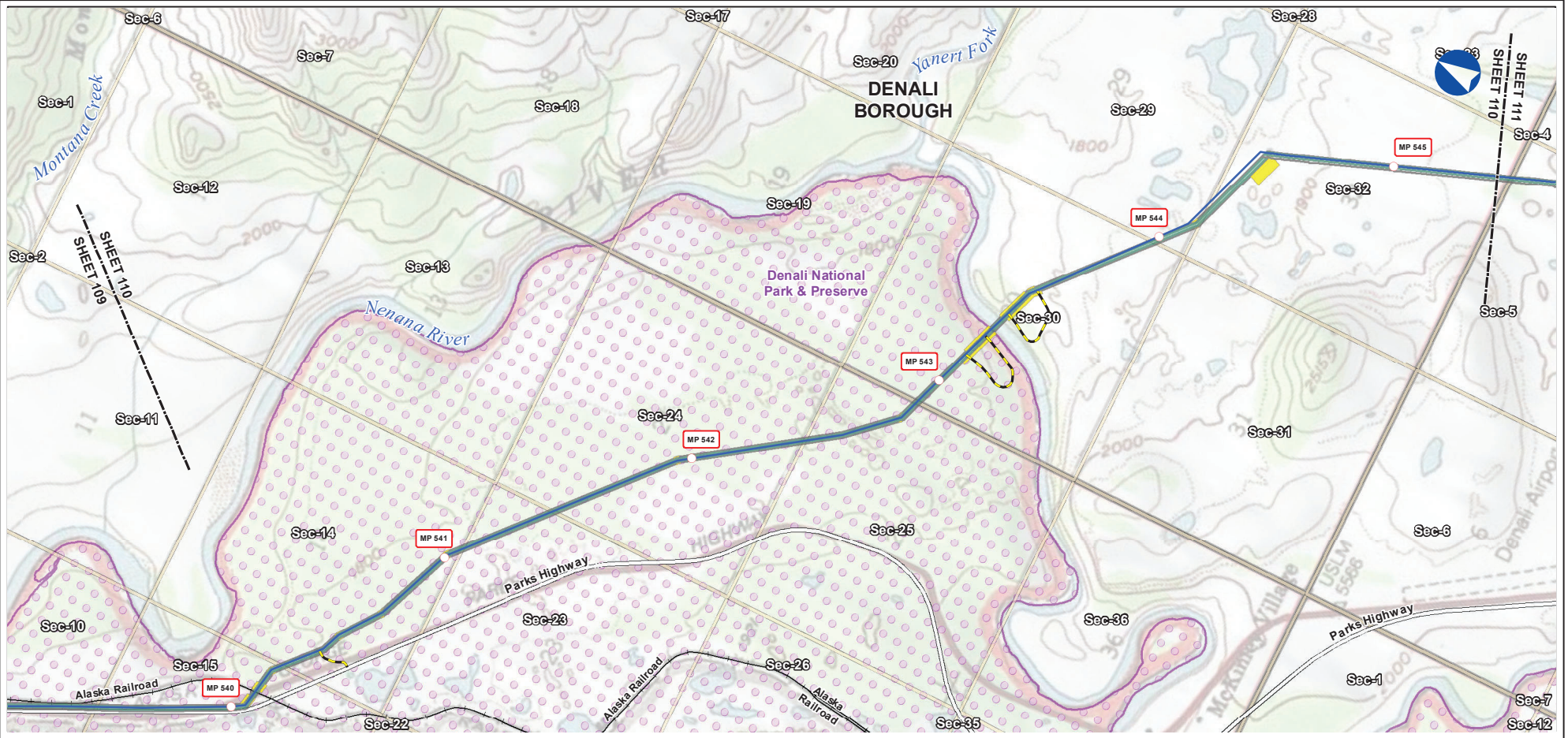
- Legend**
- PIPELINE**
- Mainline Pipeline
  - Access Road - Gravel
  - ATWS
  - Permanent ROW
  - Construction ROW
- EXISTING FEATURES**
- Railroad
  - Existing Roads
  - Conservation Lands
  - Section
  - Township

ALASKA LNG PROJECT		
Preliminary Facility Locations		
Mainline Rev C2 Route		
BOROUGH:	DENALI	DRAWN BY: ERM
STATE:	ALASKA	CHECKED BY:
REV. NO.:	REVISION	DATE
A	ISSUED FOR REVIEW	2019-25-11
<b>PRELIMINARY</b>		
1:24,000		
DATE: 2019-25-11	PROJECTION: NAD83 NSRS2007 ALASKAZONE4 FTUS 54392	

**DISCLAIMER**

The information contained herein is for informational or planning purposes only. It does not nor should it be deemed to be an offer, request or proposals for rights or occupation of any kind. The Alaska LNG Project Participants and their respective officers, employees and agents, make no warranty, implied or otherwise, nor accept any liability, as to the accuracy or completeness of the information contained in these documents, drawings or electronic files. Do not remove or delete this note from document, drawing or electronic file.

PRELIMINARY FACILITY LOCATIONS - MAINLINE REV C2 ROUTE



B-117



Alaska LNG Project

- Legend**
- PIPELINE**
- Mainline Pipeline
  - Access Road - Gravel
  - ATWS
  - Permanent ROW
  - Construction ROW
- EXISTING FEATURES**
- Railroad
  - Existing Roads
  - Section
  - Township
  - Conservation Lands

ALASKA LNG PROJECT		
Preliminary Facility Locations		
Mainline Rev C2 Route		
BOROUGH:	DENALI	DRAWN BY: ERM
STATE:	ALASKA	CHECKED BY:
REV. NO.:	REVISION	DATE
A	ISSUED FOR REVIEW	2019-25-11
<b>PRELIMINARY</b>		
1:24,000		
DATE: 2019-25-11	PROJECTION: NAD83 NSRS2007 ALASKAZONE4 FTUS 54392	

**DISCLAIMER**

The information contained herein is for informational or planning purposes only. It does not nor should it be deemed to be an offer, request or proposals for rights or occupation of any kind. The Alaska LNG Project Participants and their respective officers, employees and agents, make no warranty, implied or otherwise, nor accept any liability, as to the accuracy or completeness of the information contained in these documents, drawings or electronic files. Do not remove or delete this note from document, drawing or electronic file.

**Mainline Facilities**  
*(cont'd in appendix B volumes 3 and 4)*