

## **STEVENS VILLAGE**

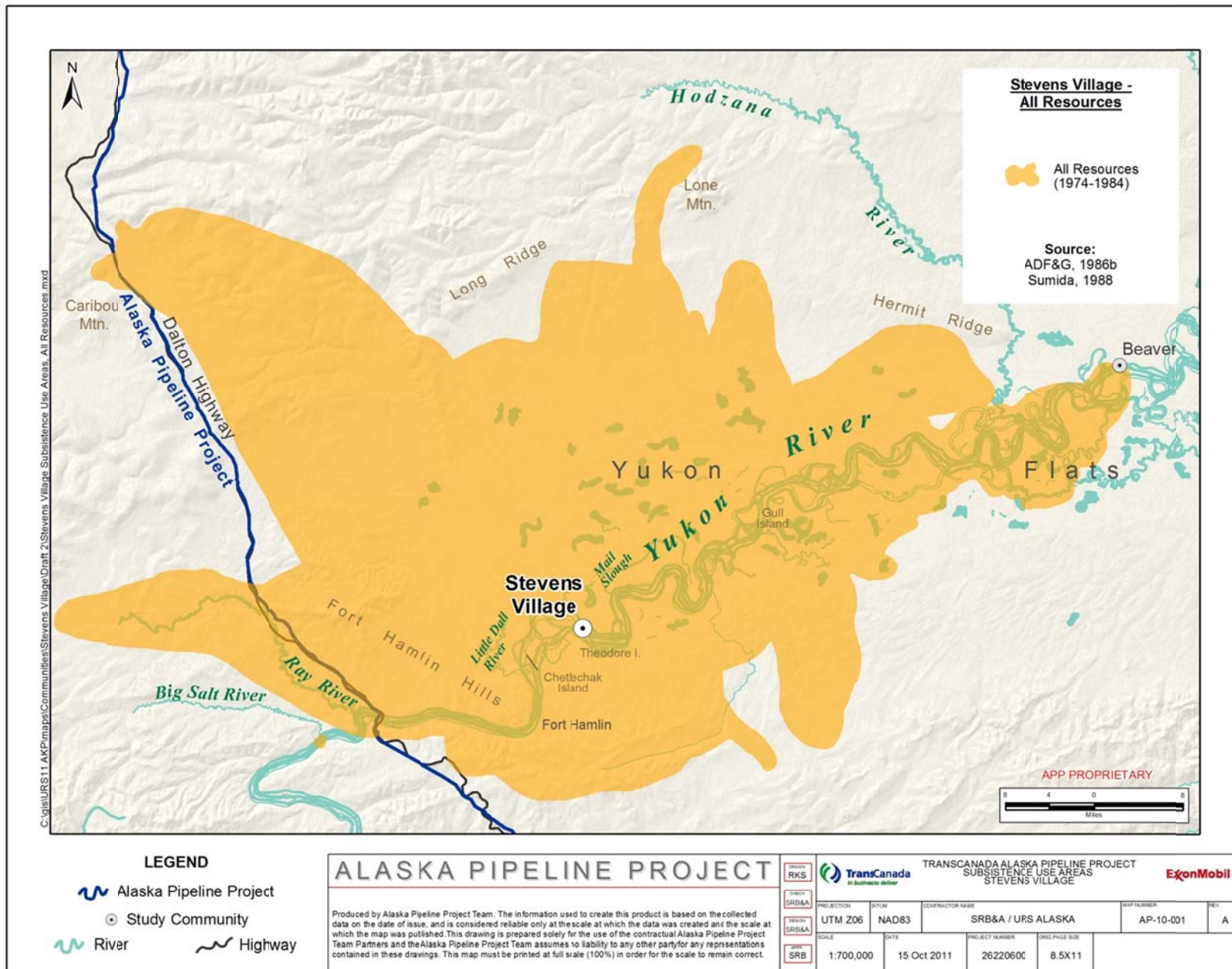


Figure E-87. Stevens Village Subsistence Use Areas, All Resources

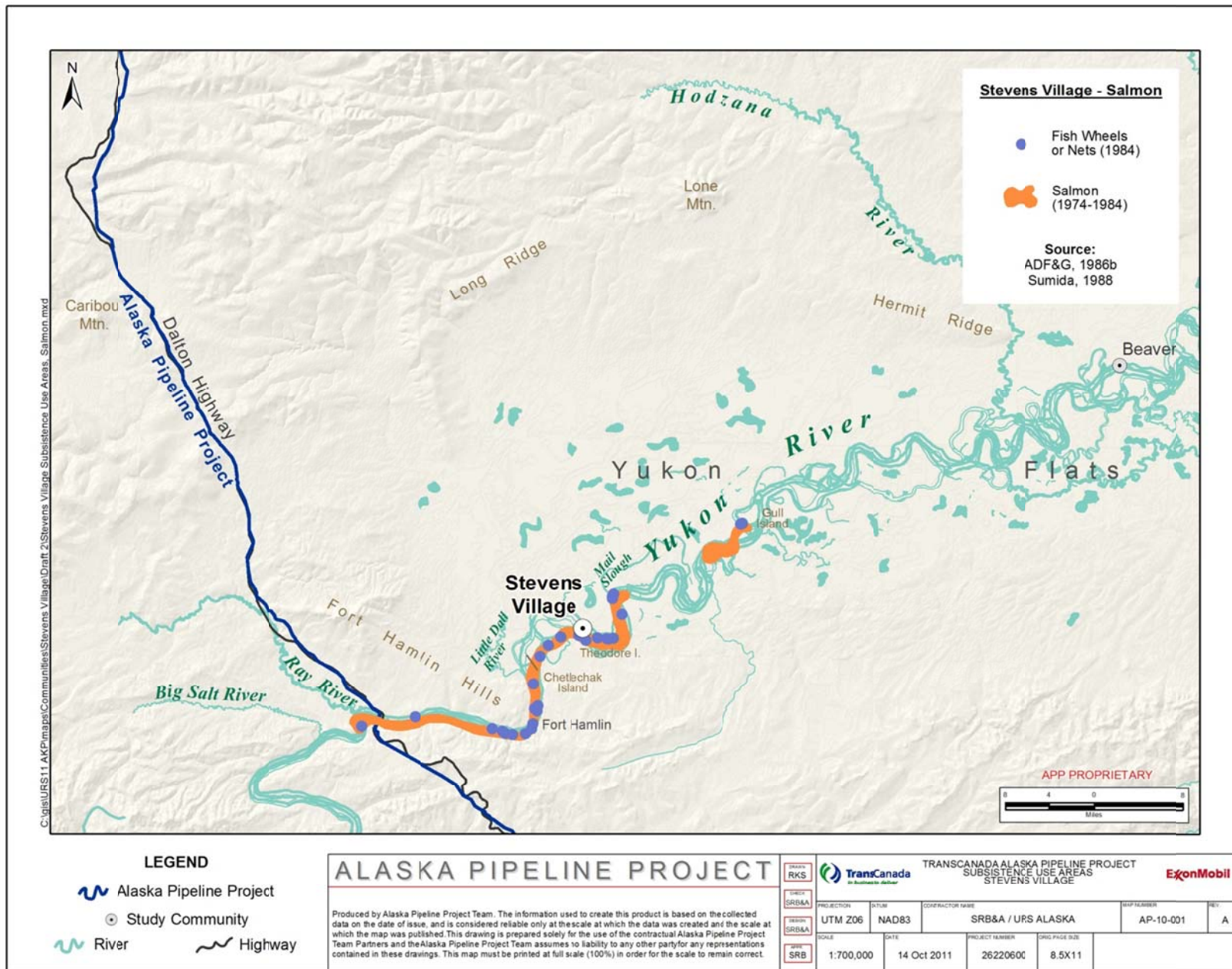


Figure E-88. Stevens Village Subsistence Use Areas, Salmon



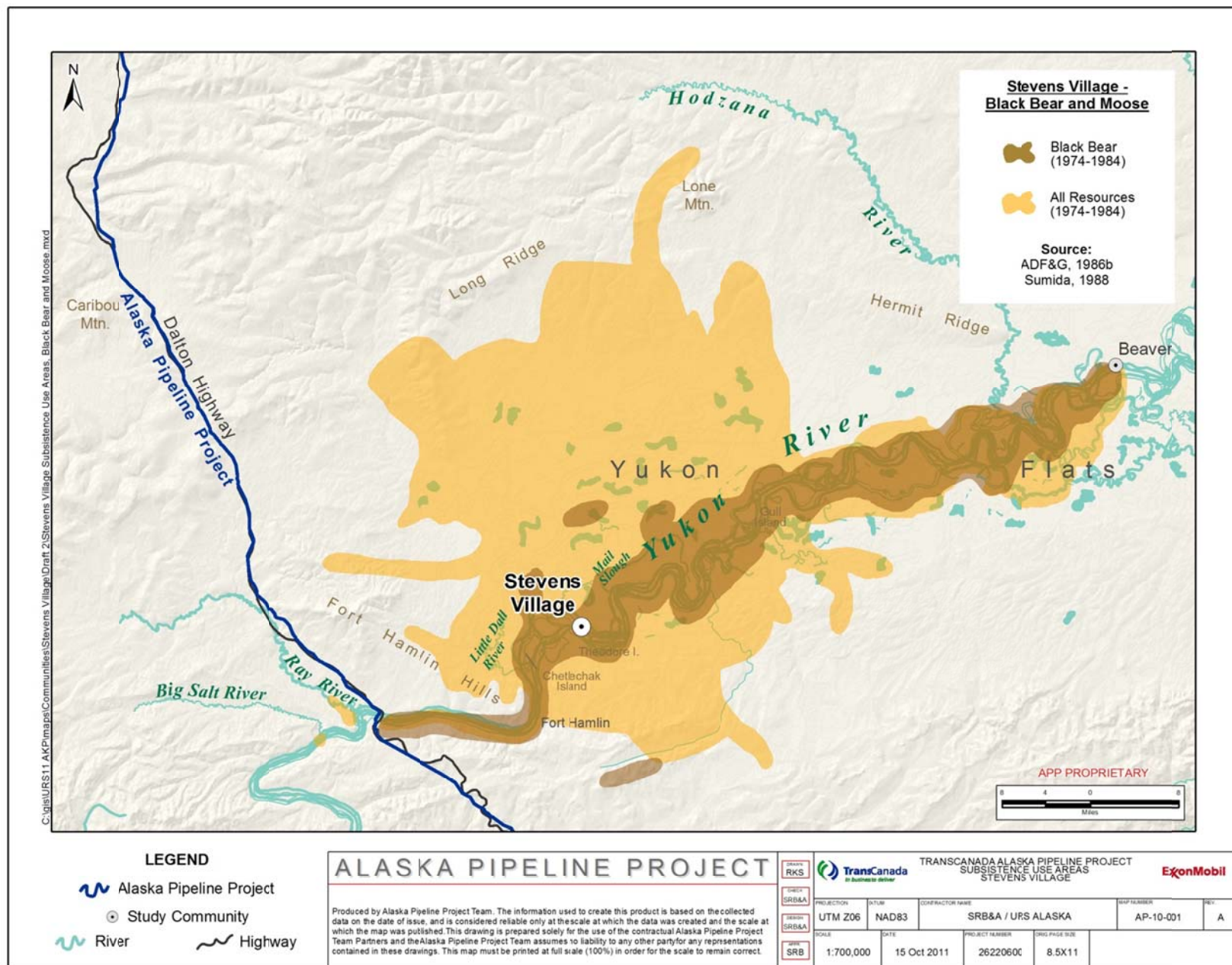


Figure E-89. Stevens Village Subsistence Use Areas, Black Bear and Moose



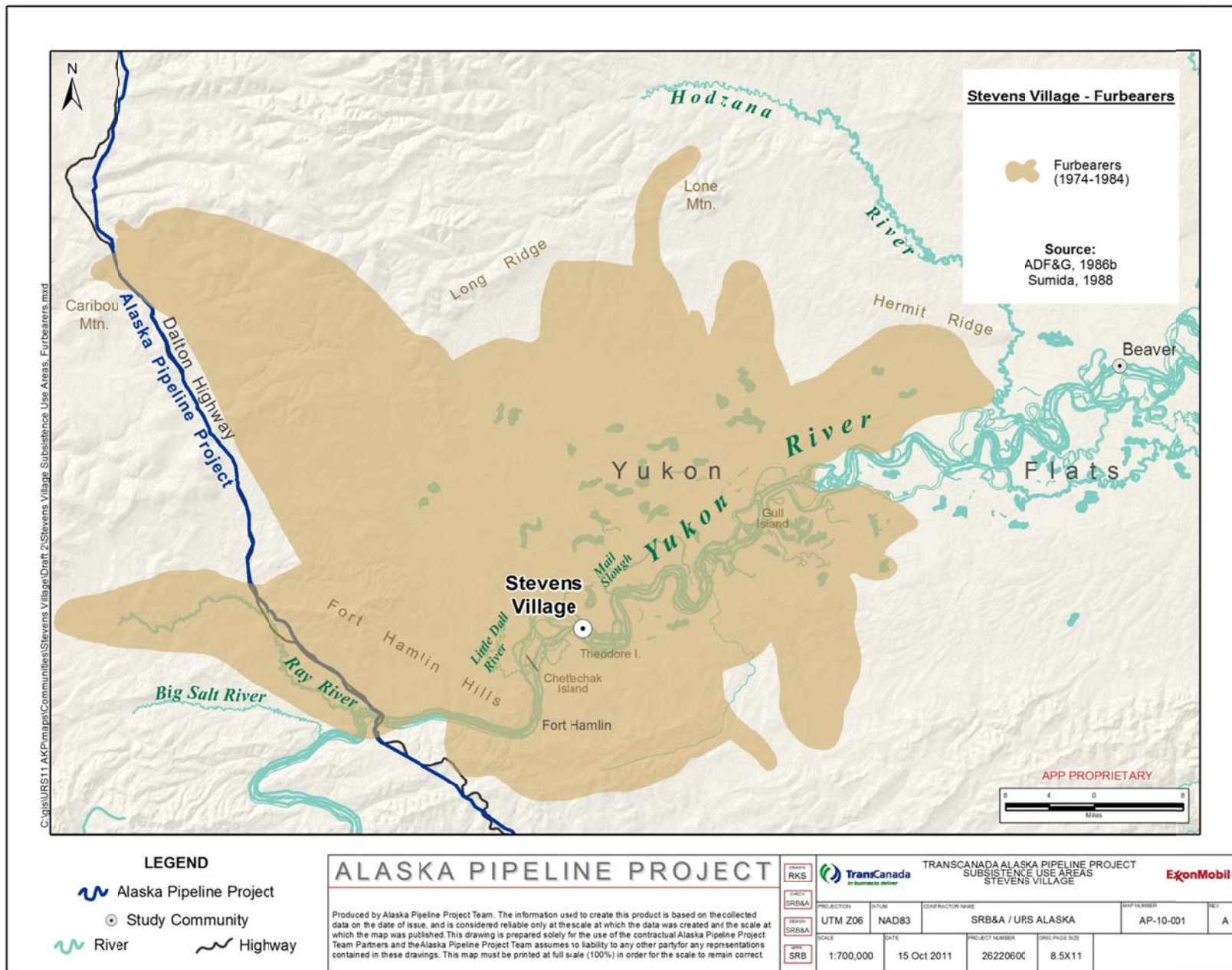
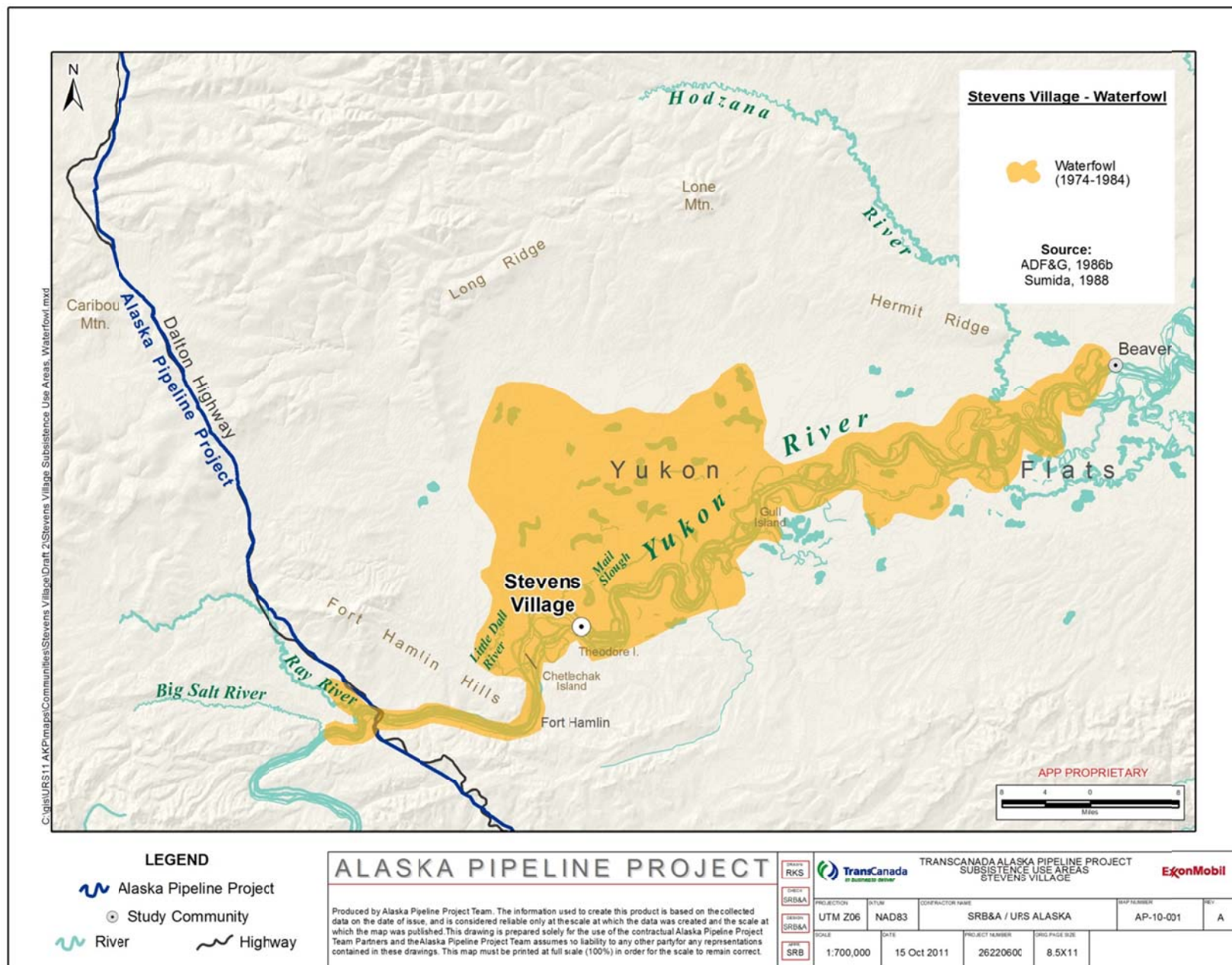


Figure E-90. Stevens Village Subsistence Use Areas, Small Land Mammals



**Figure E-91. Stevens Village Subsistence Use Areas, Migratory Birds**



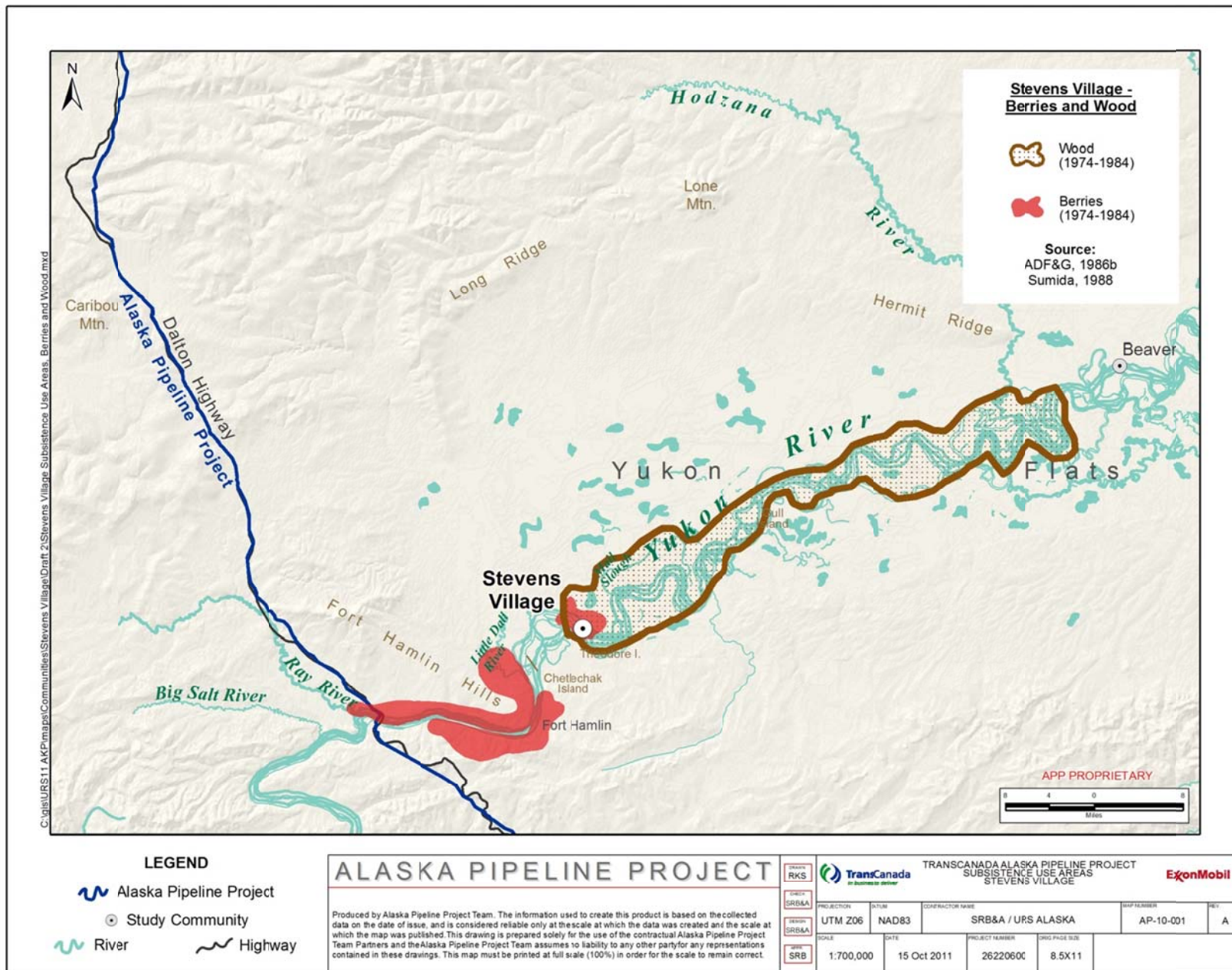


Figure E-92. Stevens Village Subsistence Use Areas, Vegetation



**WISEMAN**

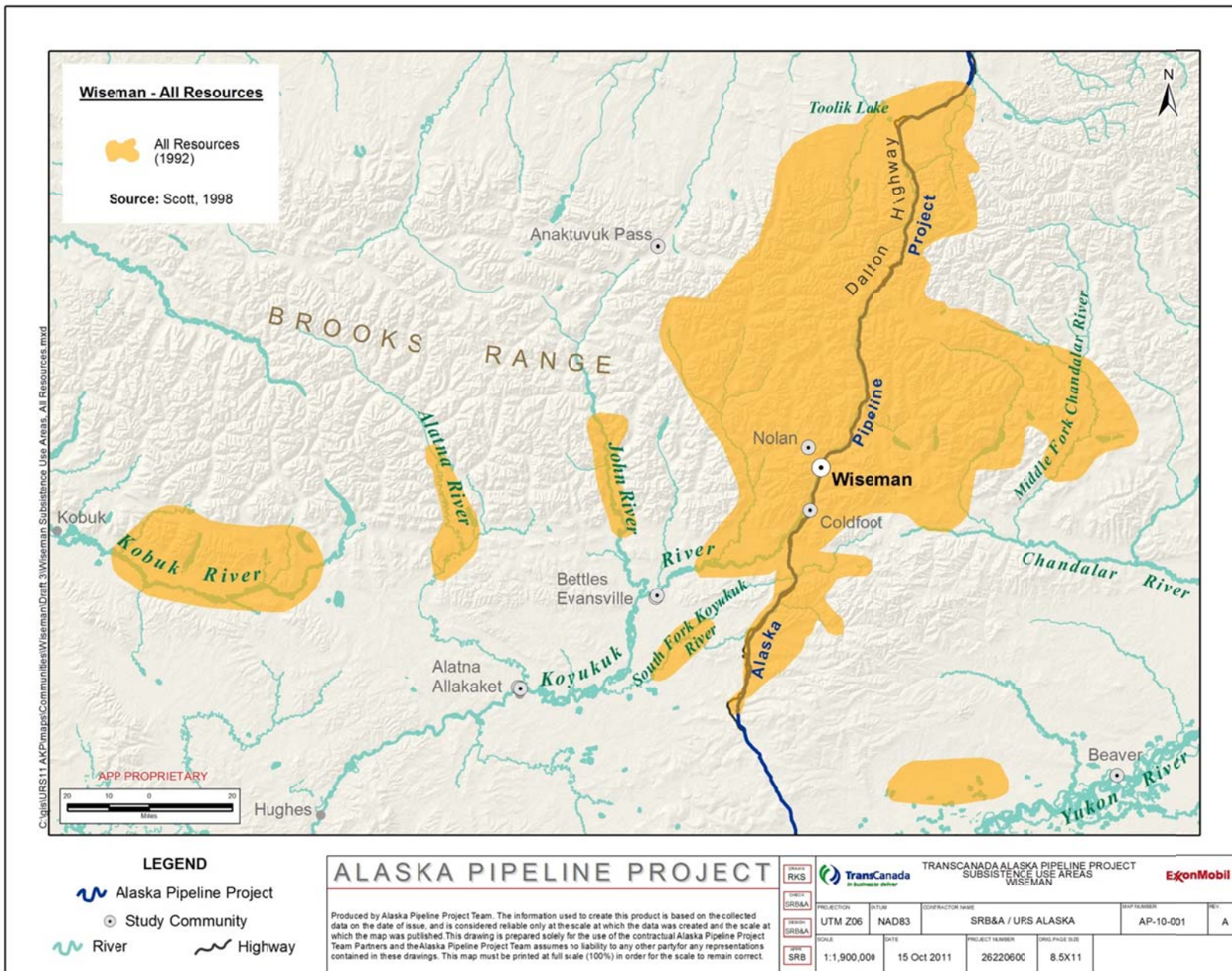


Figure E-93. Wiseman Subsistence Use Areas, All Resources

## **CHISANA**



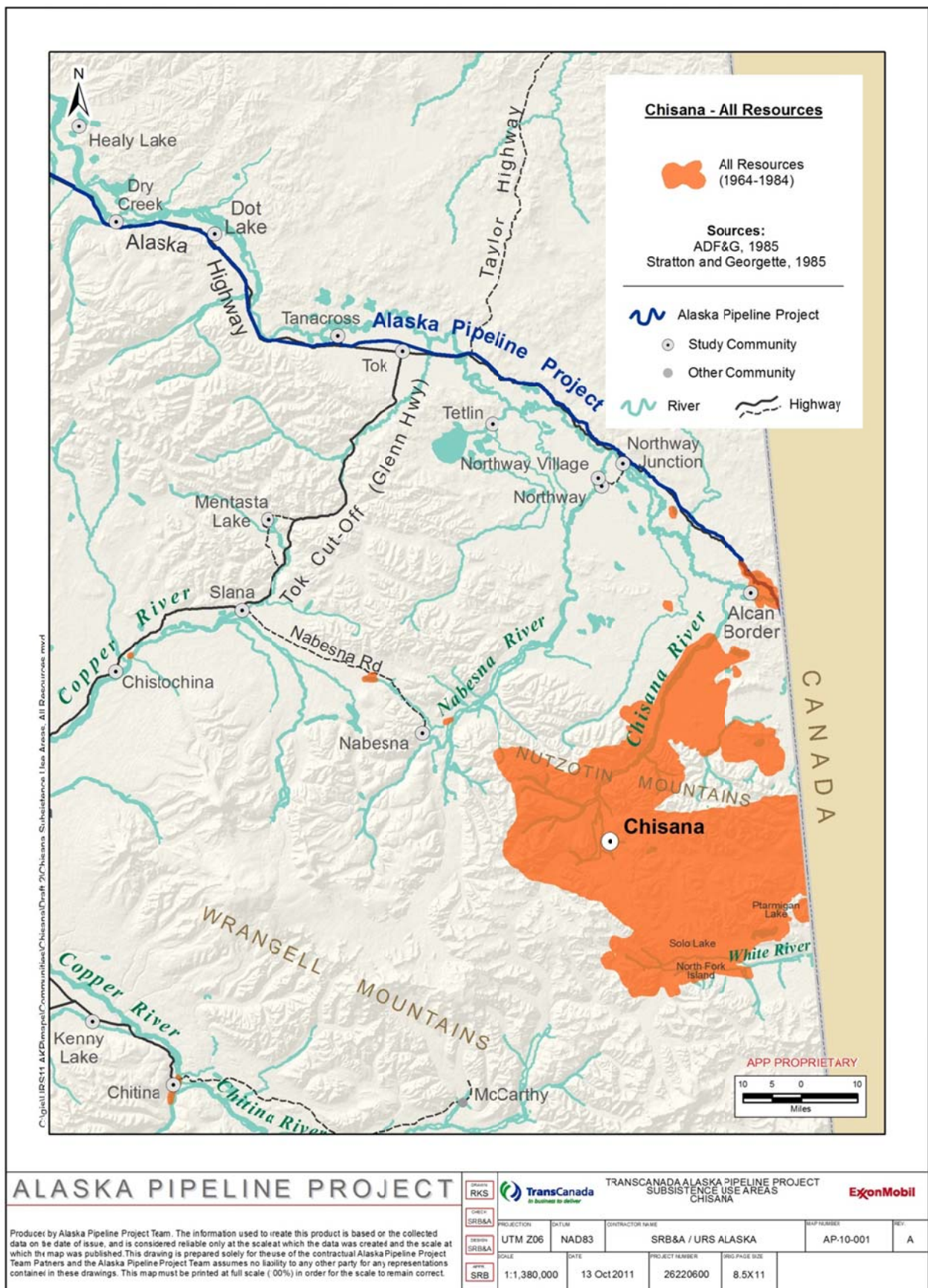


Figure E-94. Chisana Subsistence Use Areas, All Resources



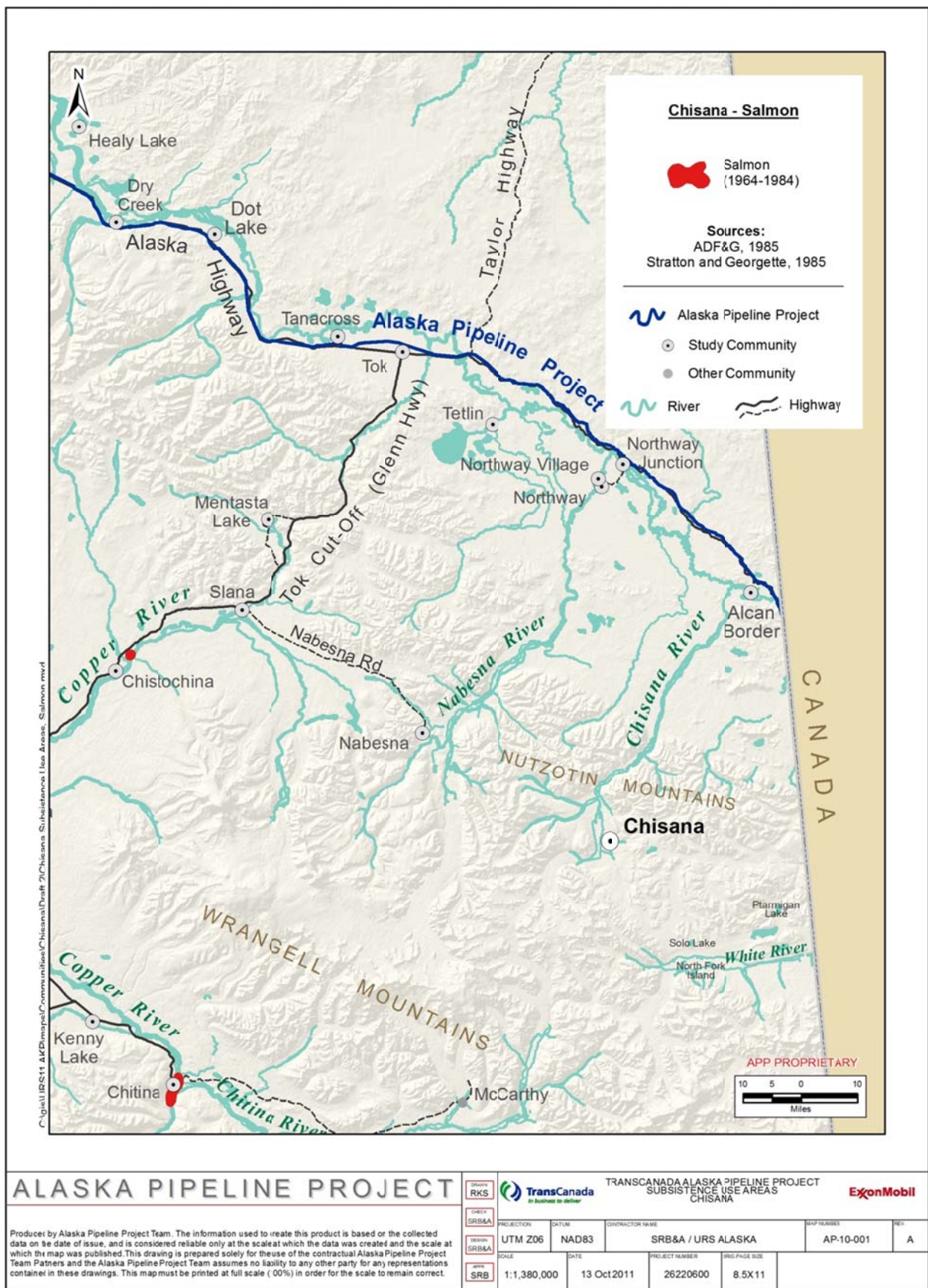
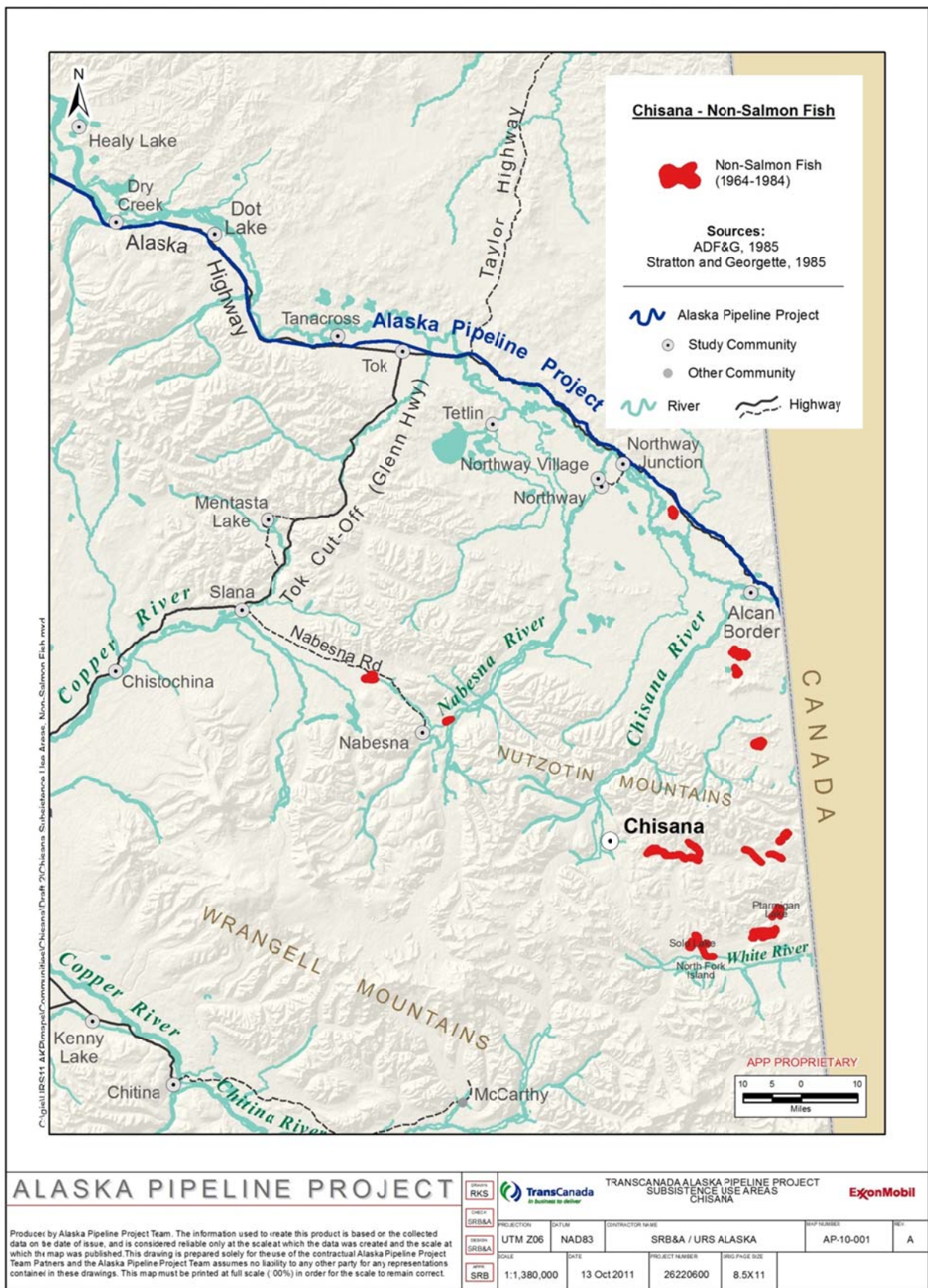


Figure E-95. Chisana Subsistence Use Areas, Salmon





**Figure E-96. Chisana Subsistence Use Areas, Non-Salmon Fish**



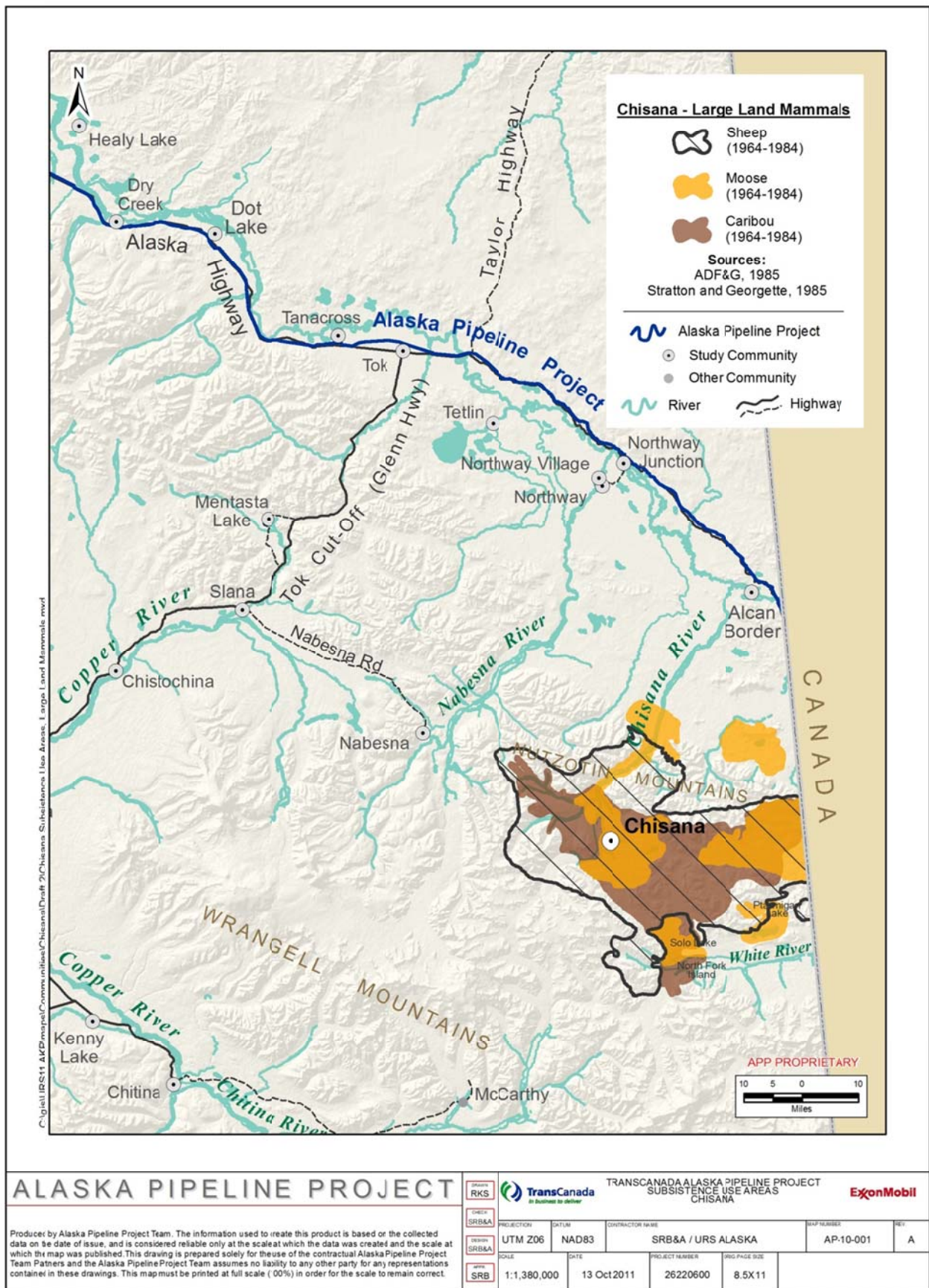


Figure E-97. Chisana Subsistence Use Areas, Large Land Mammals



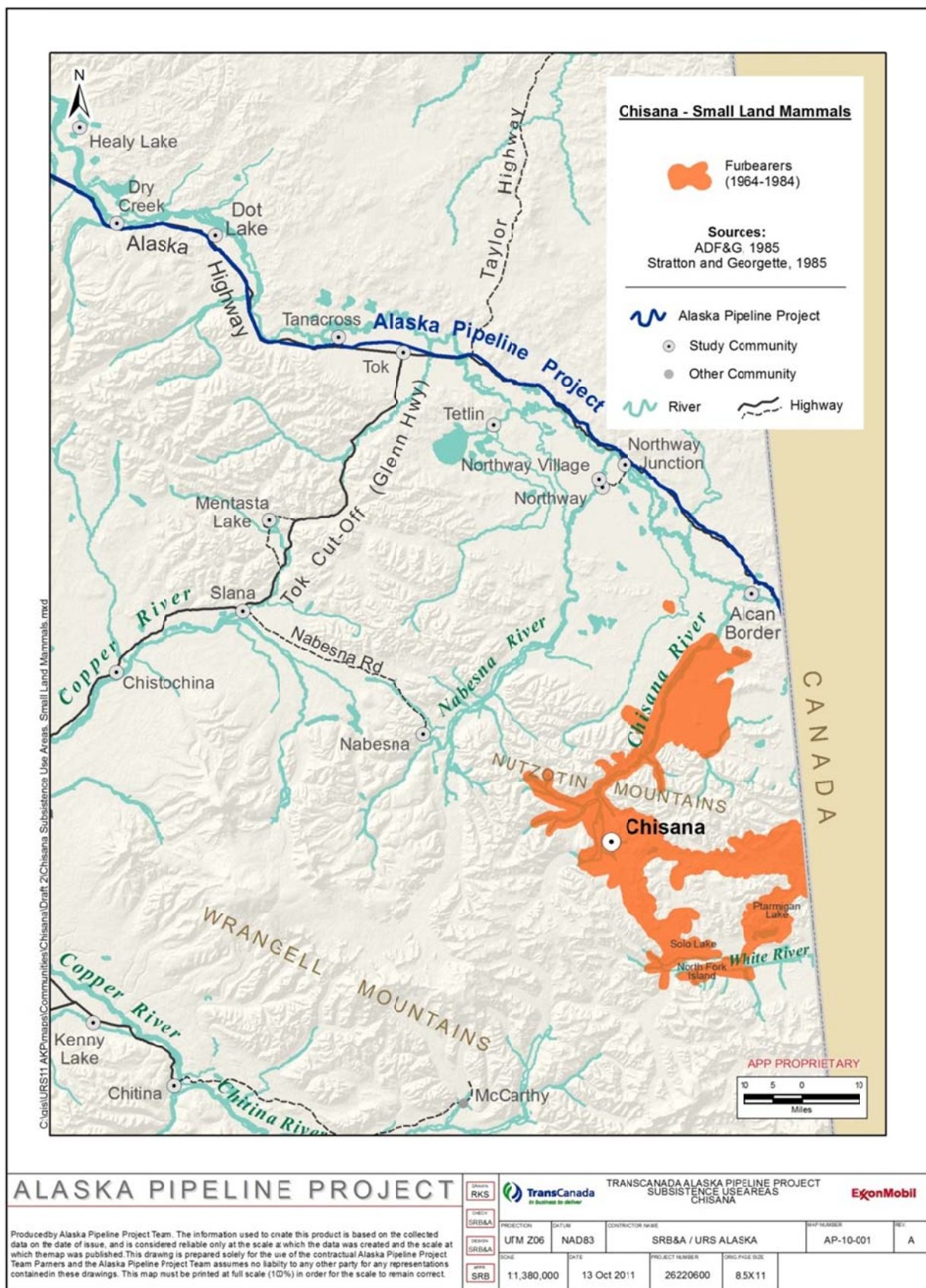


Figure E-98. Chisana Subsistence Use Areas, Small Land Mammals

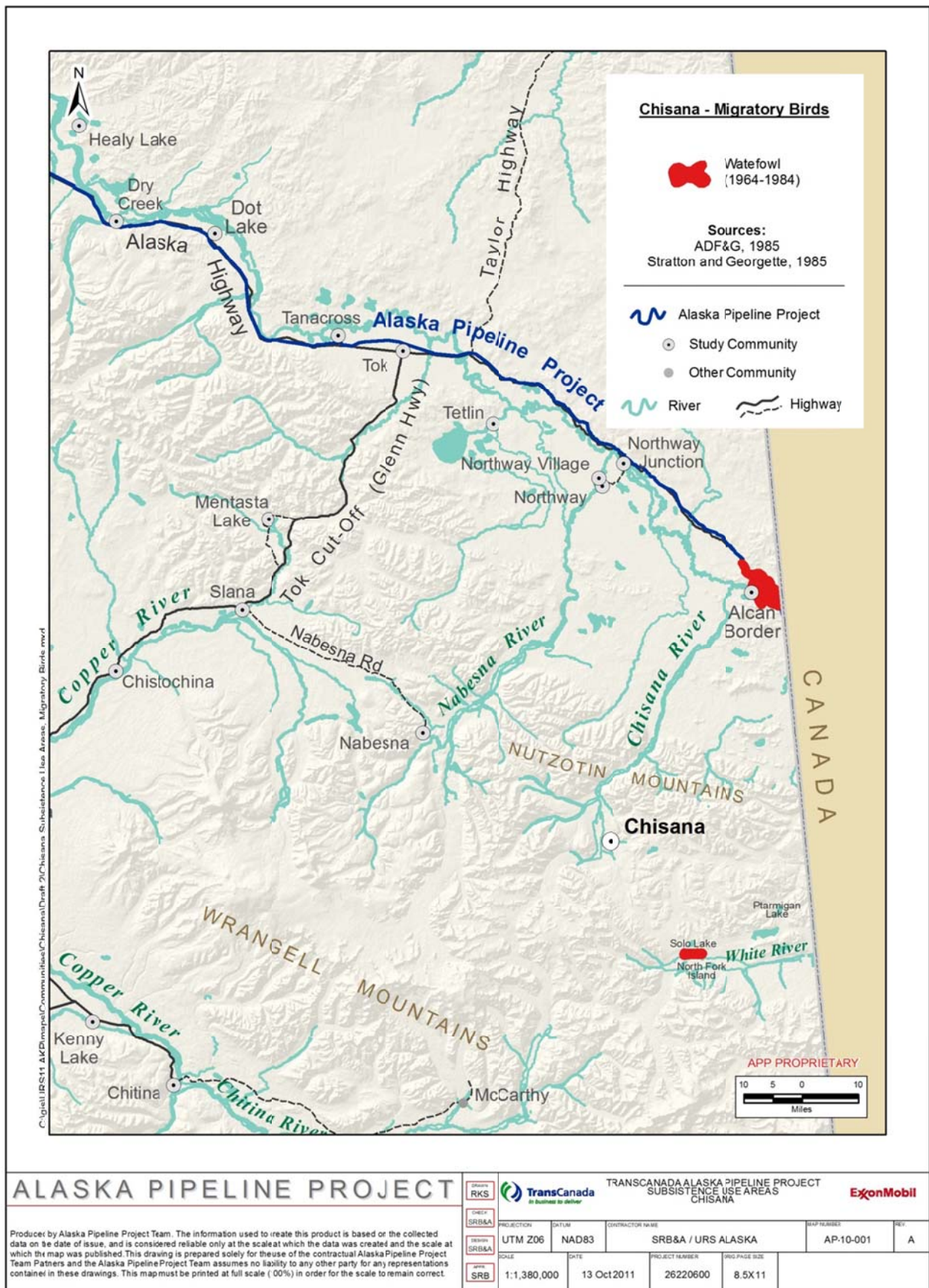


Figure E-99. Chisana Subsistence Use Areas, Migratory Birds



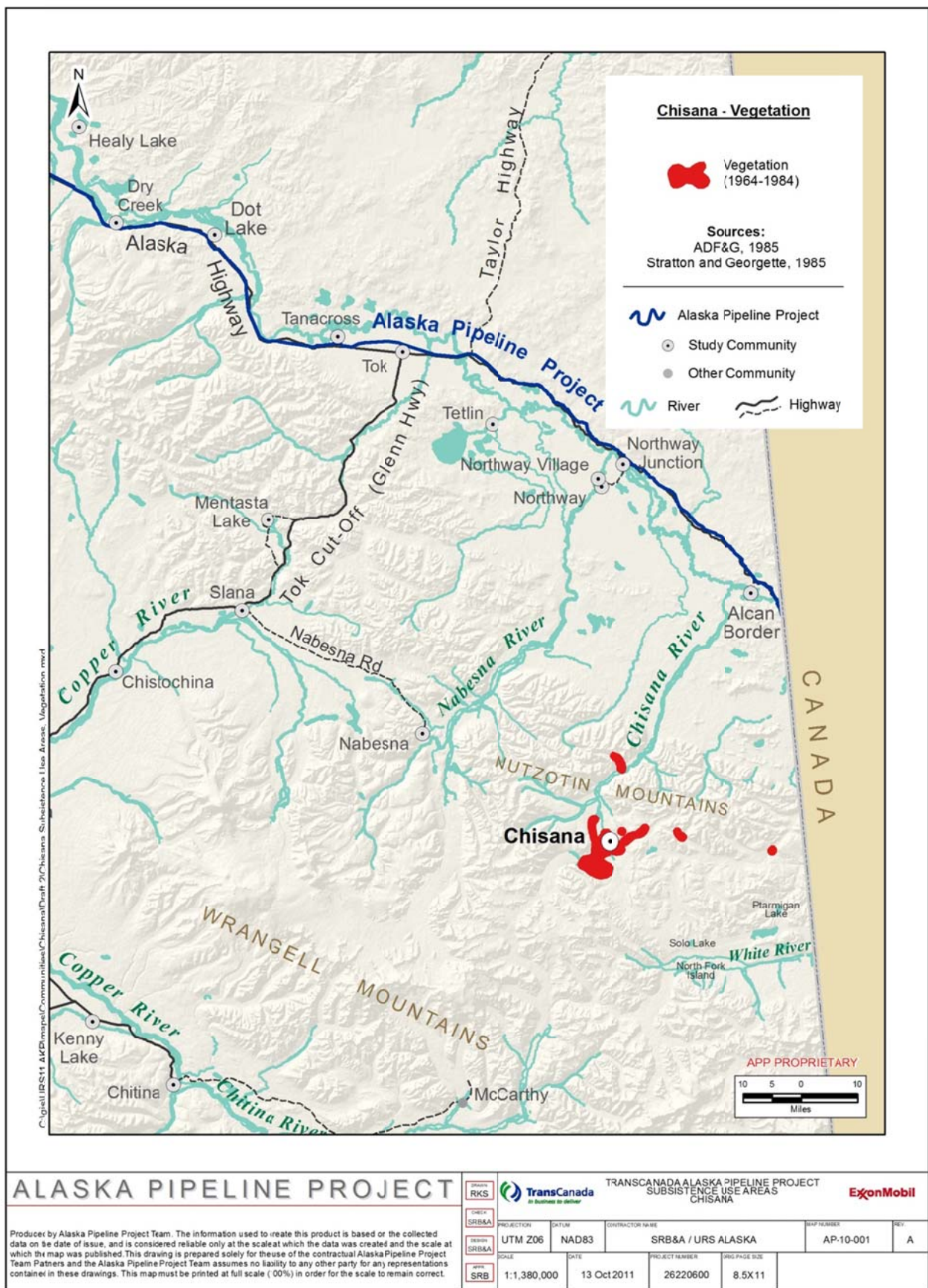


Figure E-100. Chisana Subsistence Use Areas, Vegetation

## **DOT LAKE**

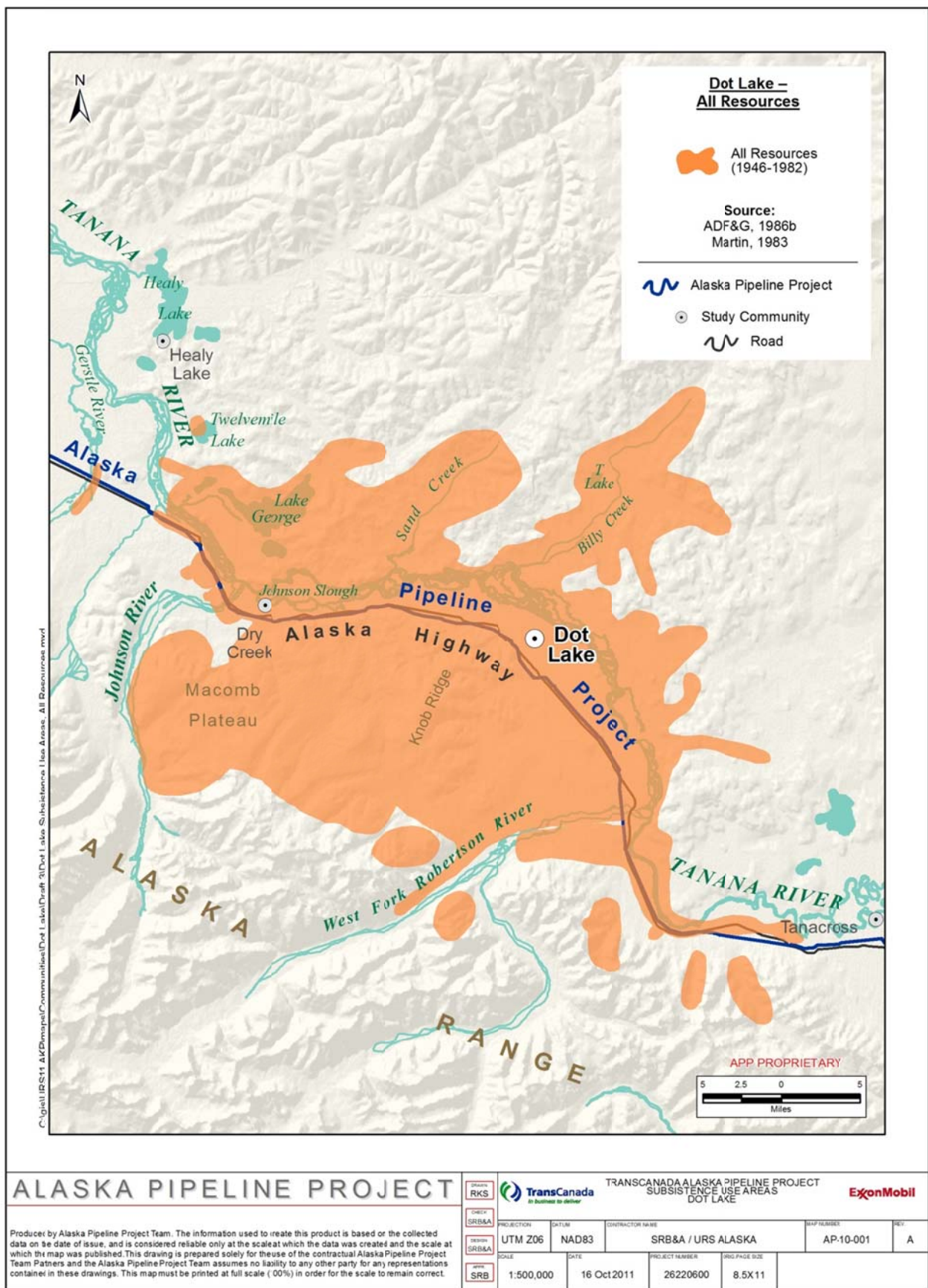


Figure E-101. Dot Lake Subsistence Use Areas, All Resources



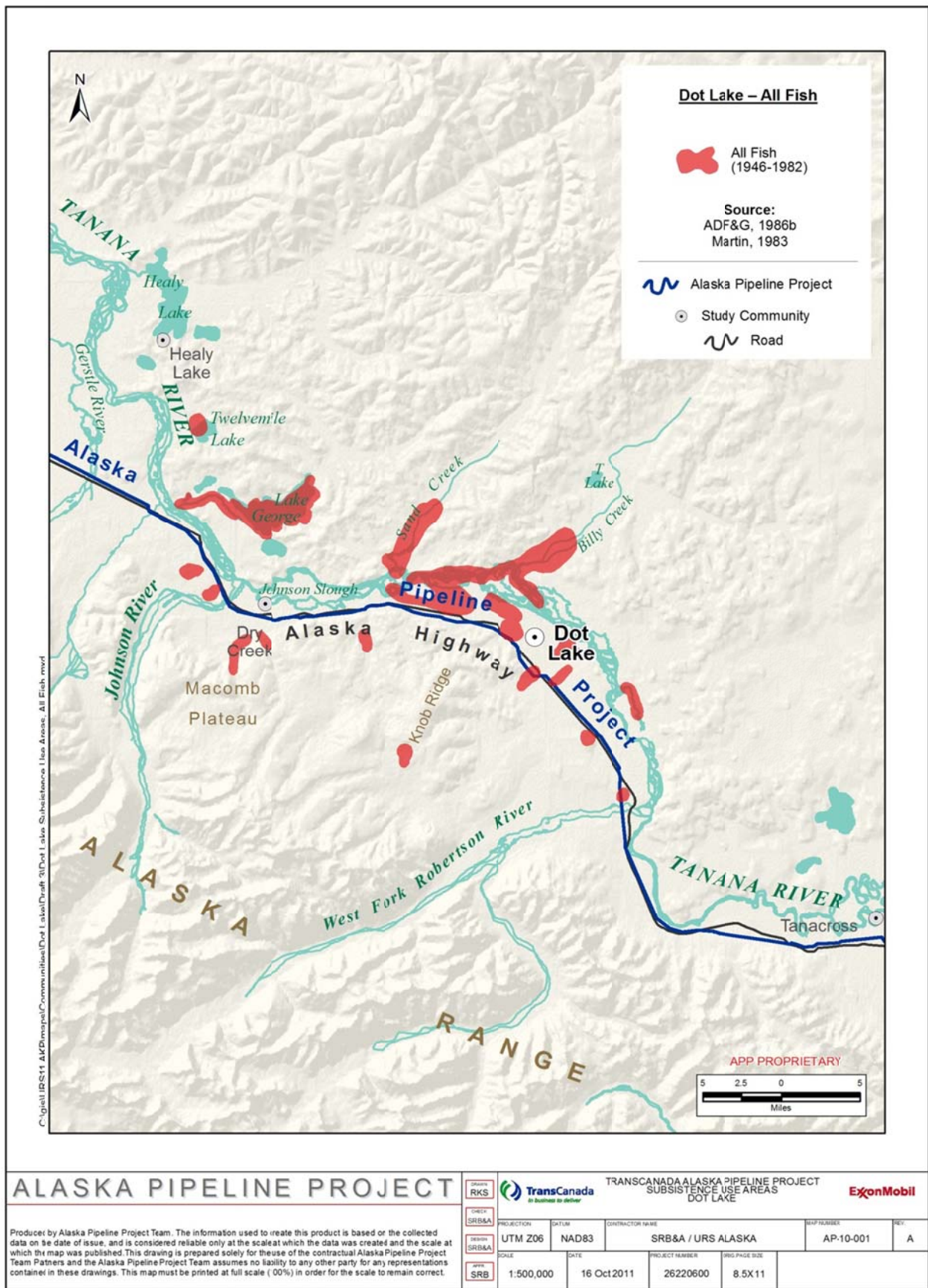


Figure E-102. Dot Lake Subsistence Use Areas, Fish



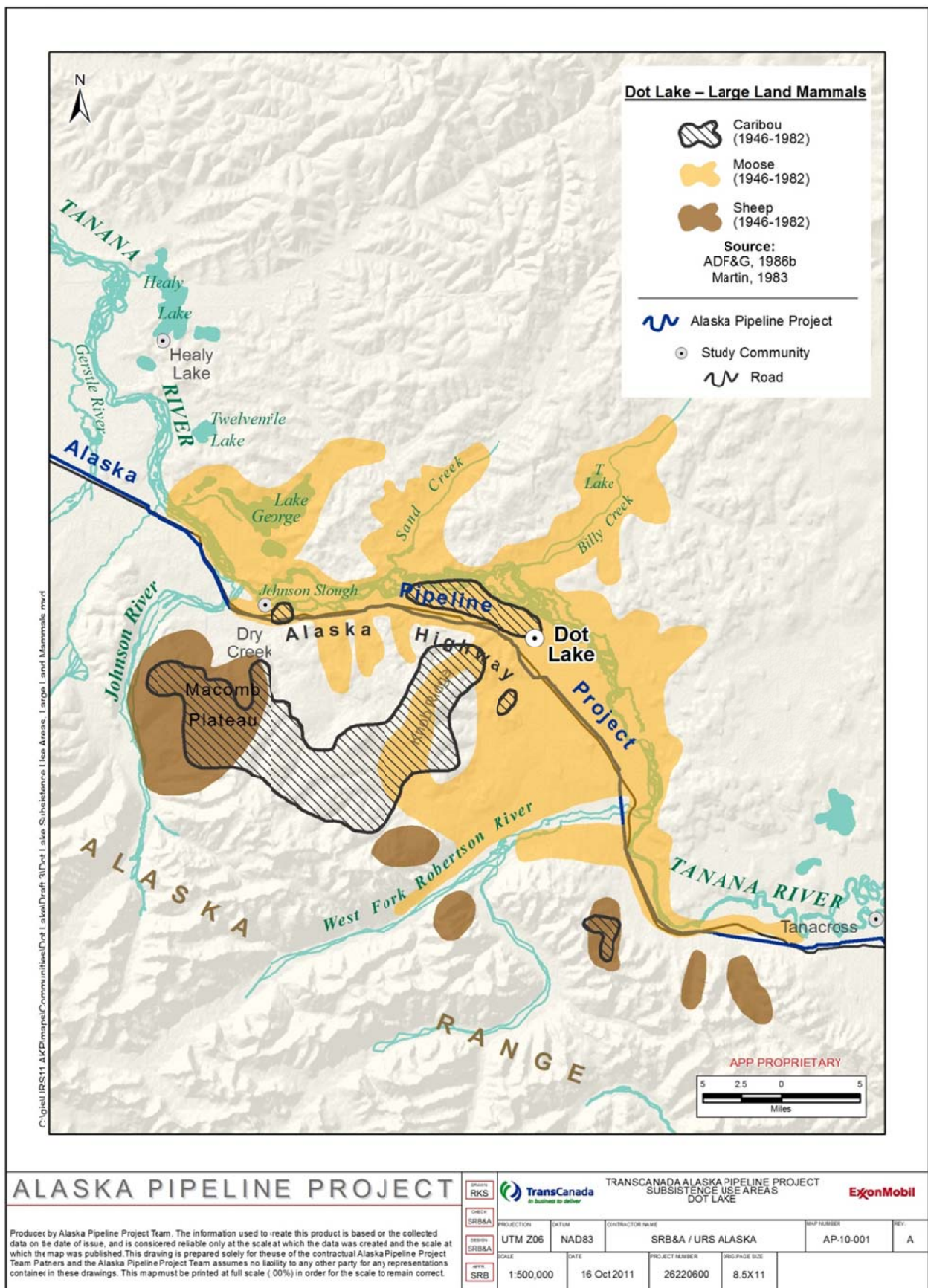


Figure E-103. Dot Lake Subsistence Use Areas, Large Land Mammals

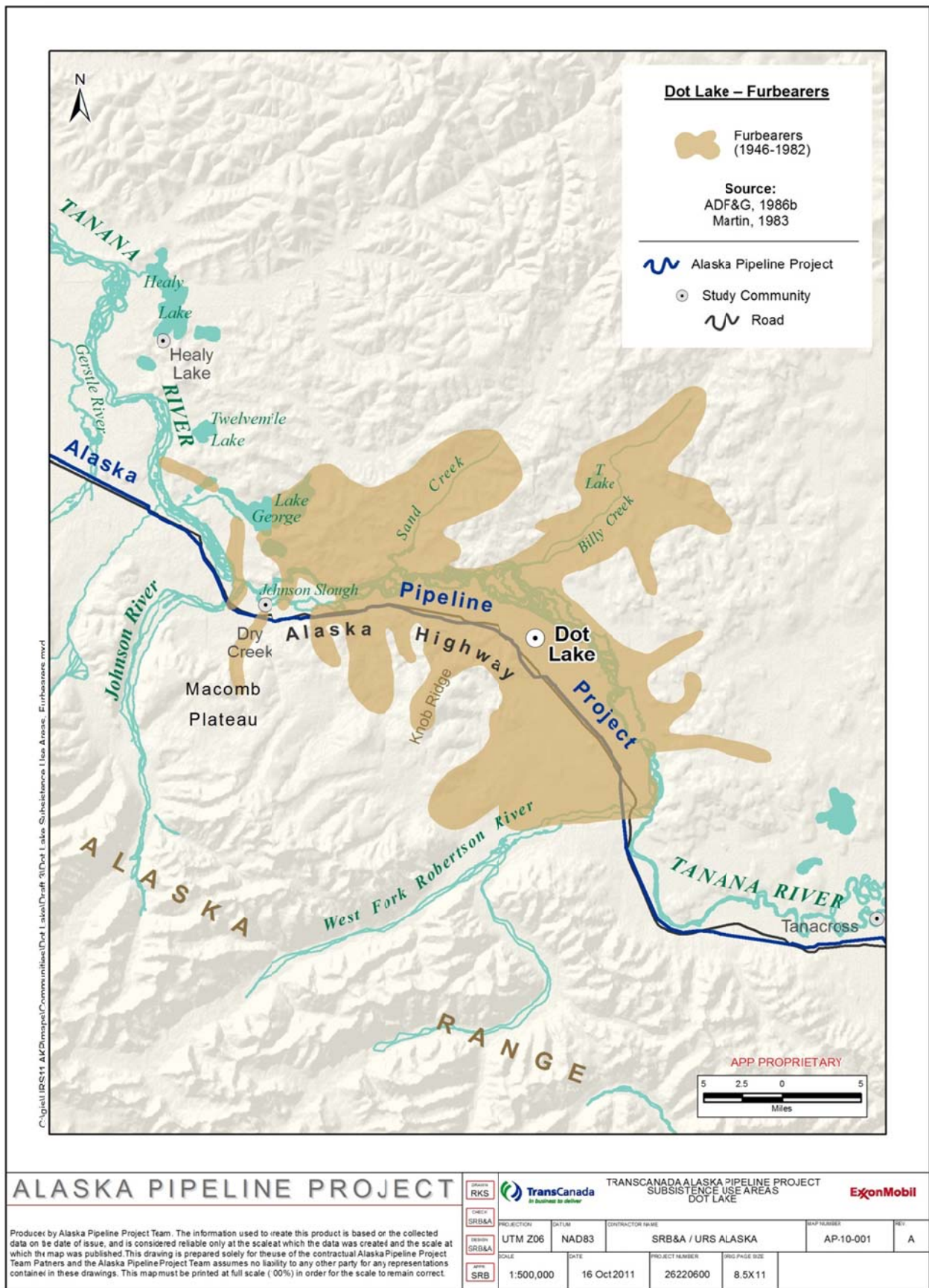


Figure E-104. Dot Lake Subsistence Use Areas, Small Land Mammals



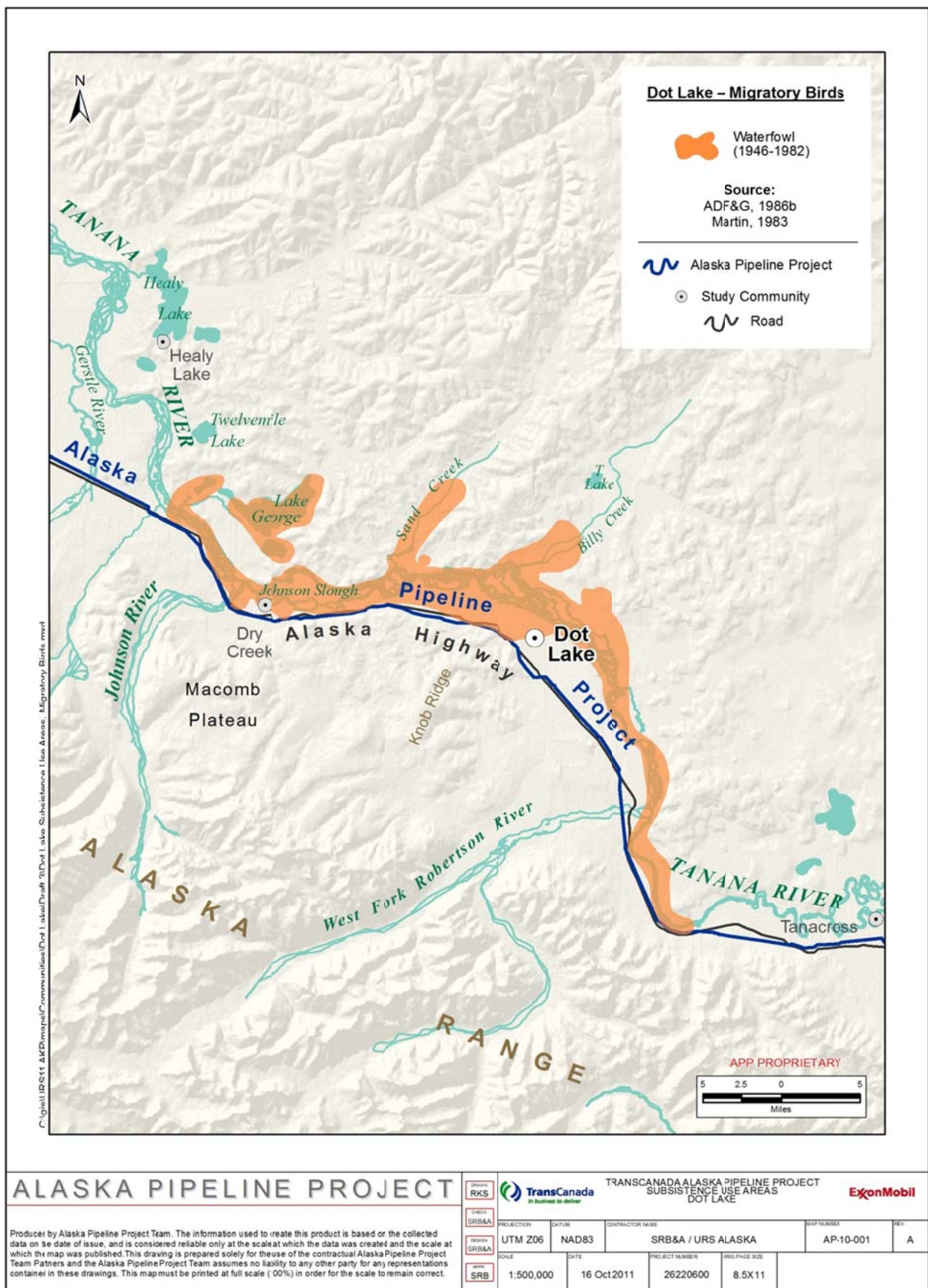


Figure E-105. Dot Lake Subsistence Use Areas, Migratory Birds

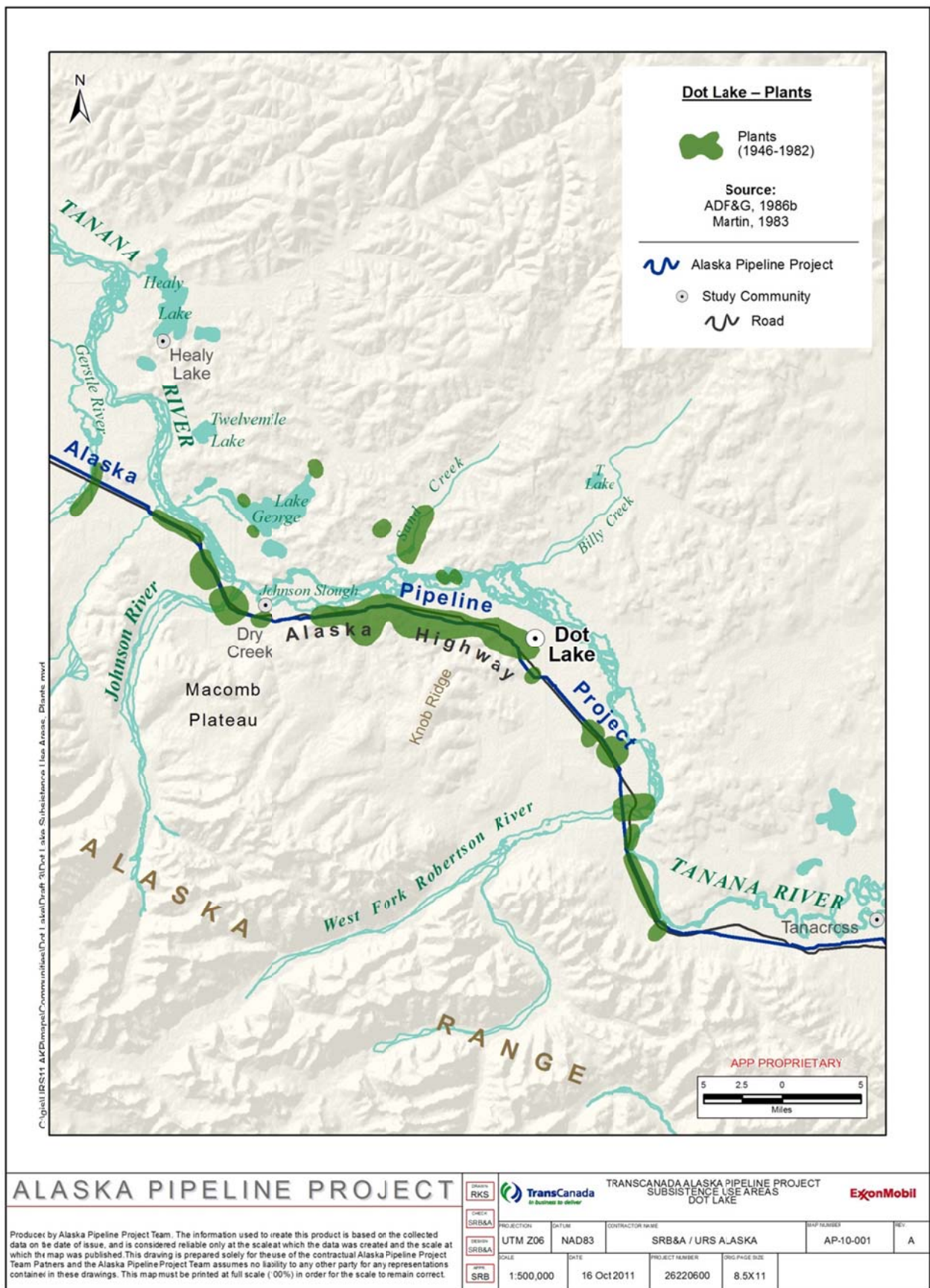


Figure E-106. Dot Lake Subsistence Use Areas, Vegetation



**HEALY**

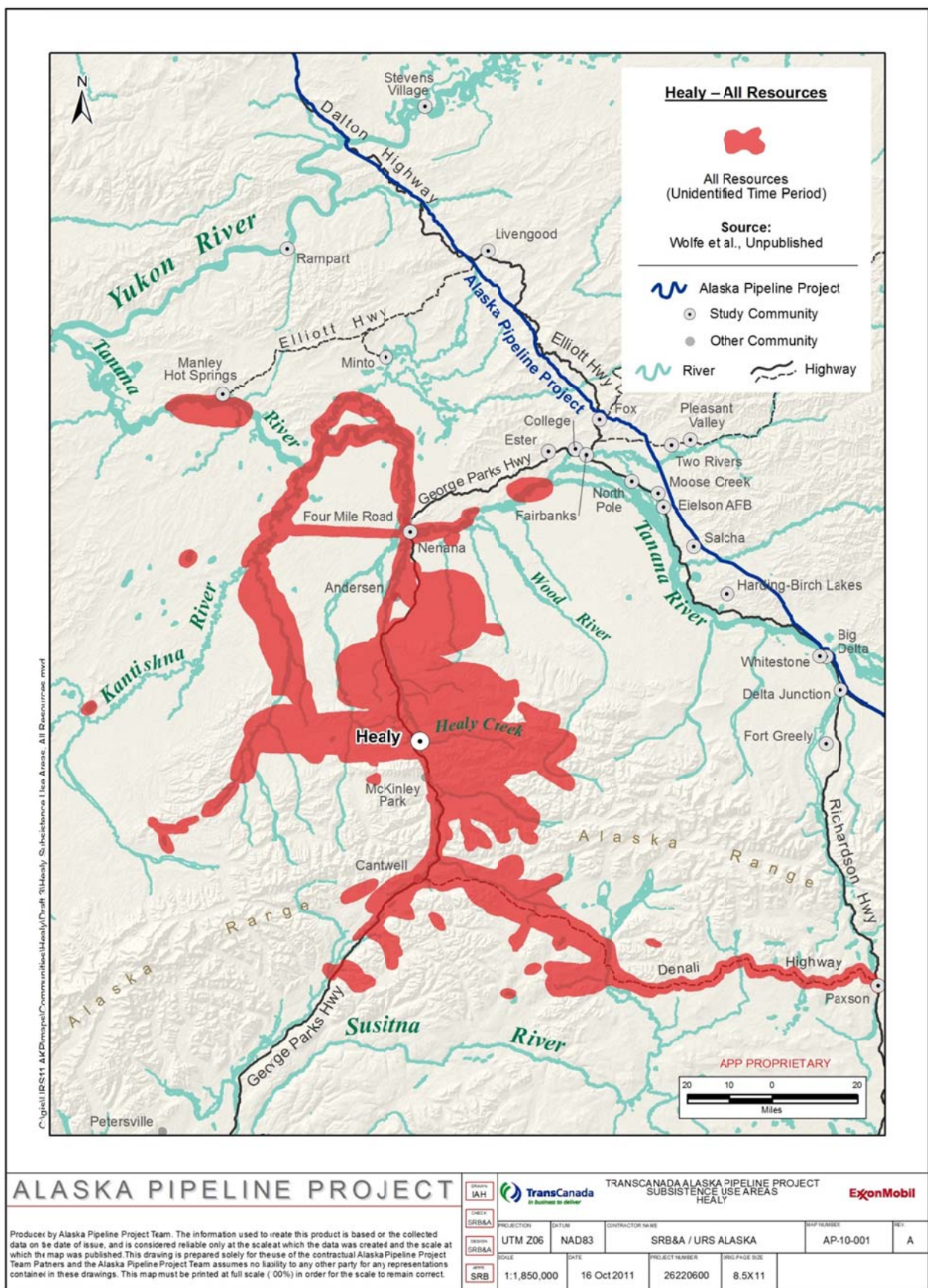


Figure E-107. Healy Subsistence Use Areas, All Resources



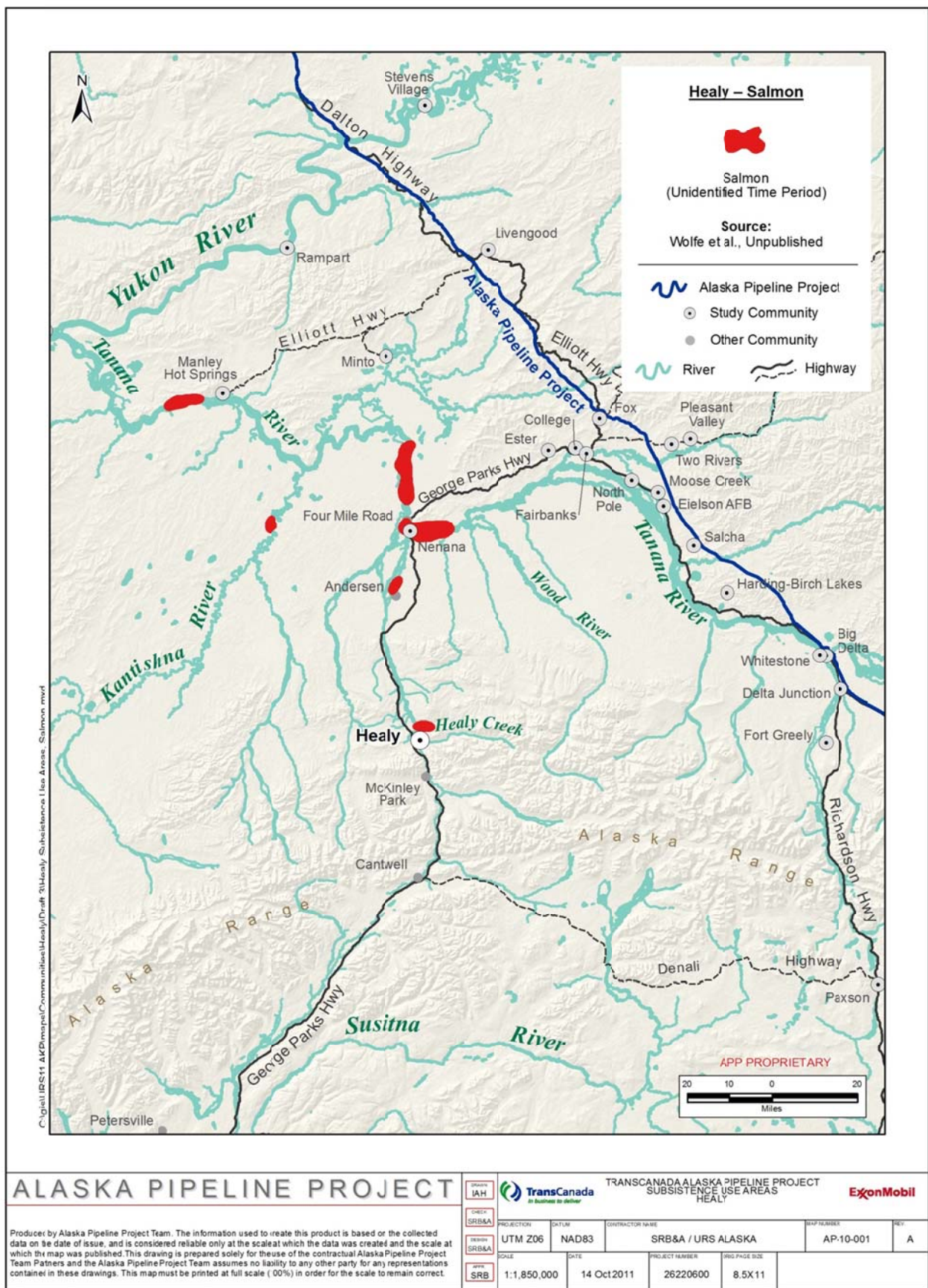


Figure E-108. Healy Subsistence Use Areas, Salmon



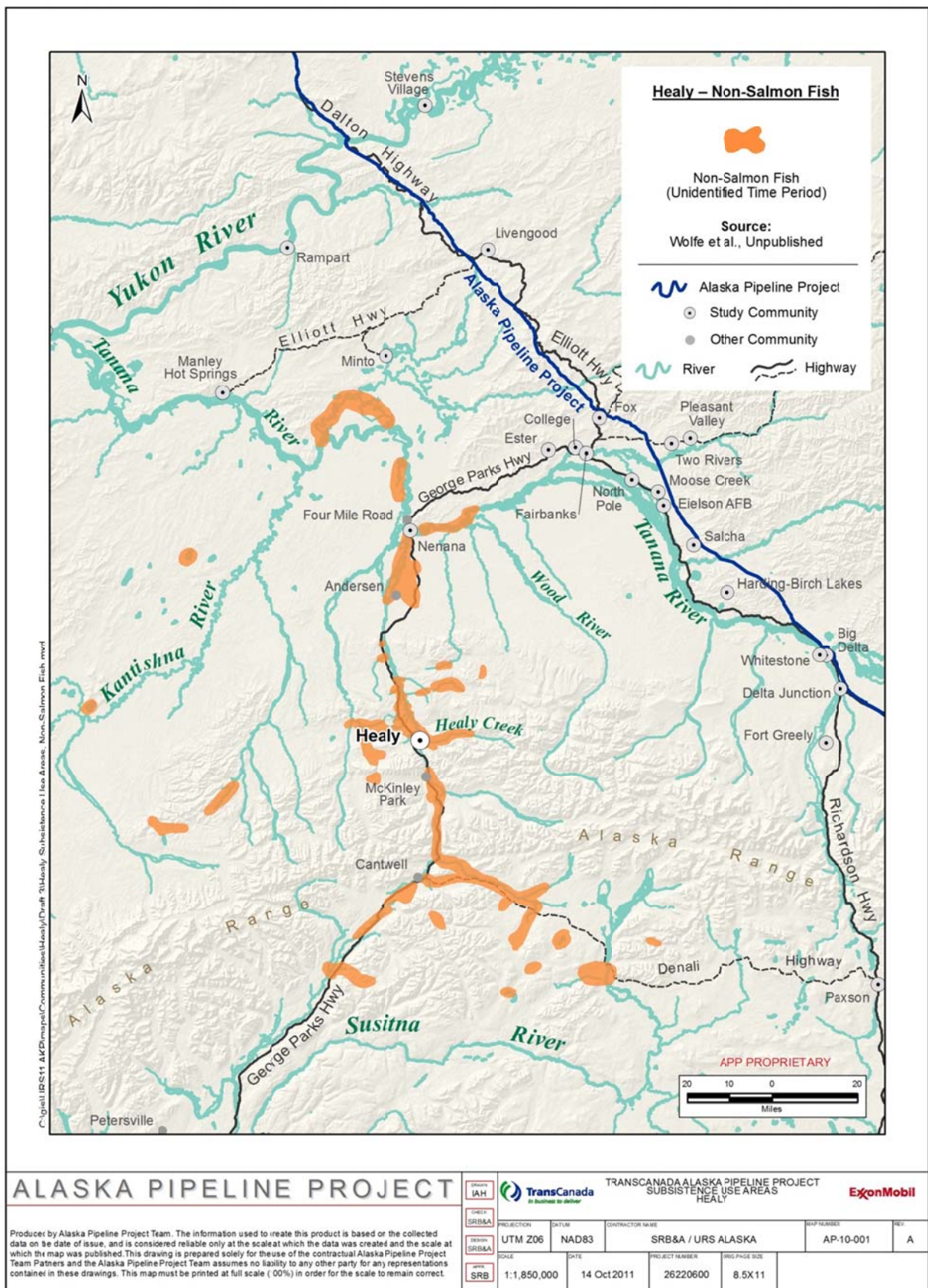


Figure E-109. Healy Subistence Use Areas, Non-Salmon Fish



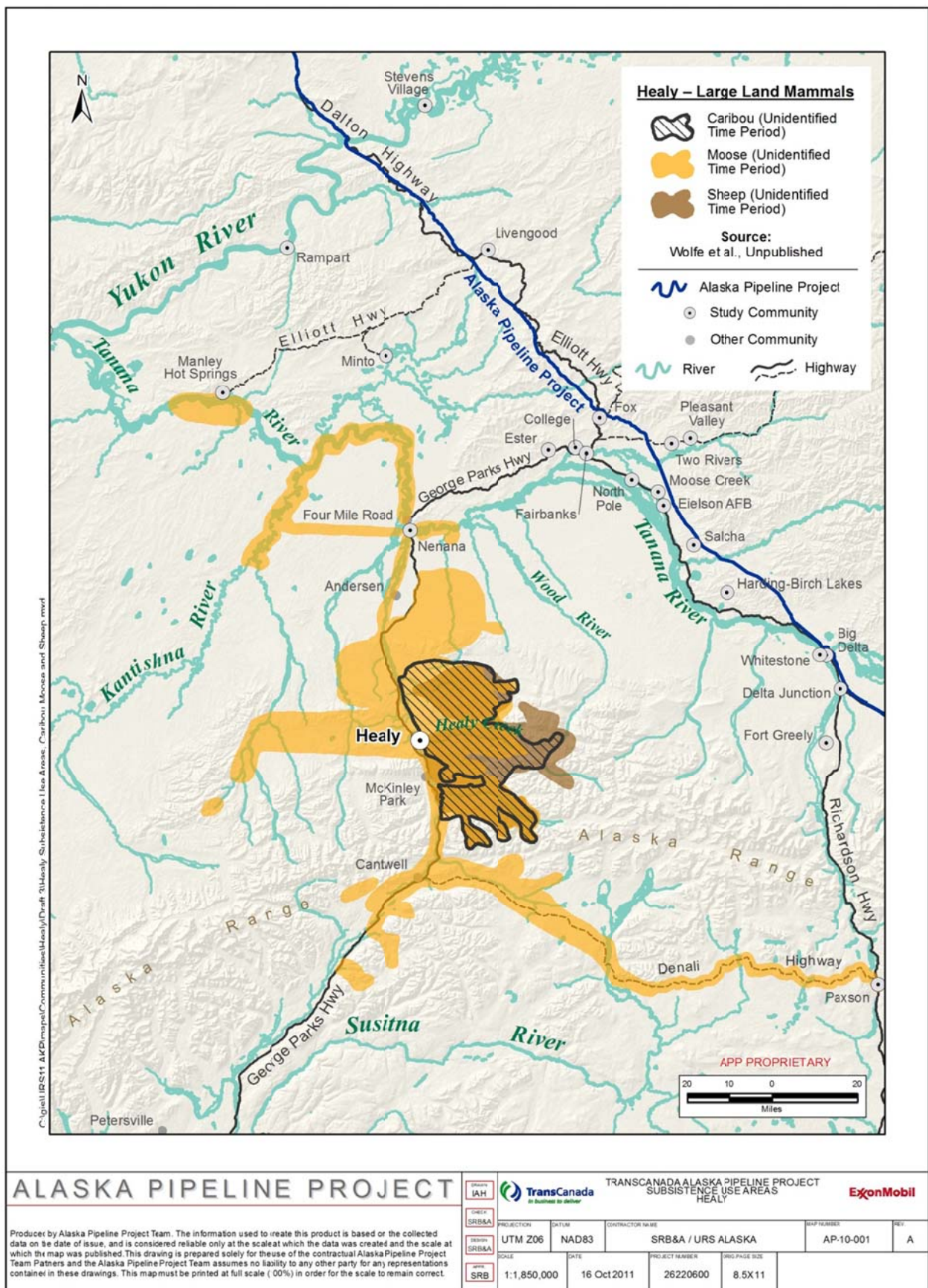


Figure E-110. Healy Subistence Use Areas, Caribou, Moose, and Sheep



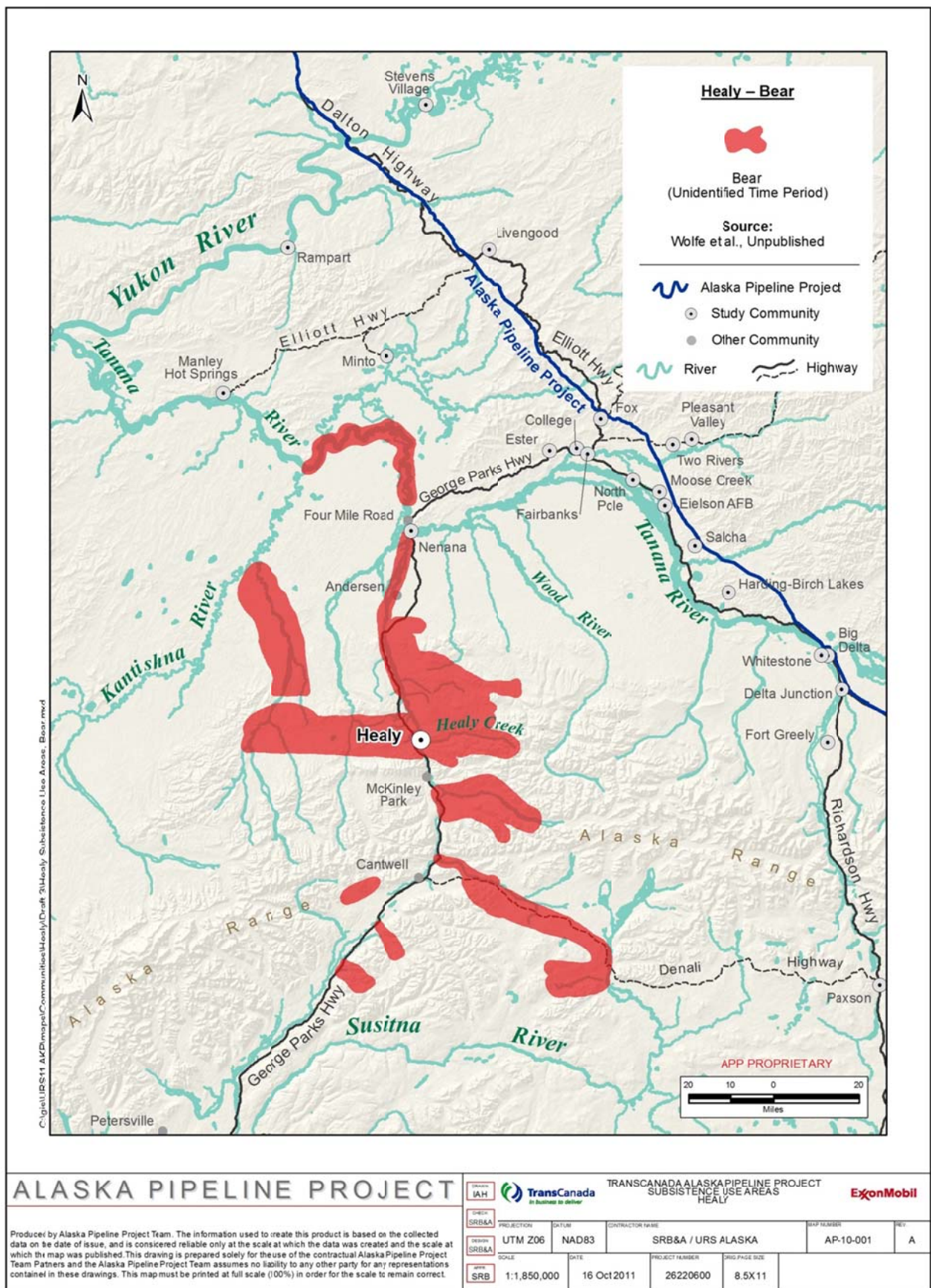


Figure E-111. Healy Subsistence Use Areas, Bear



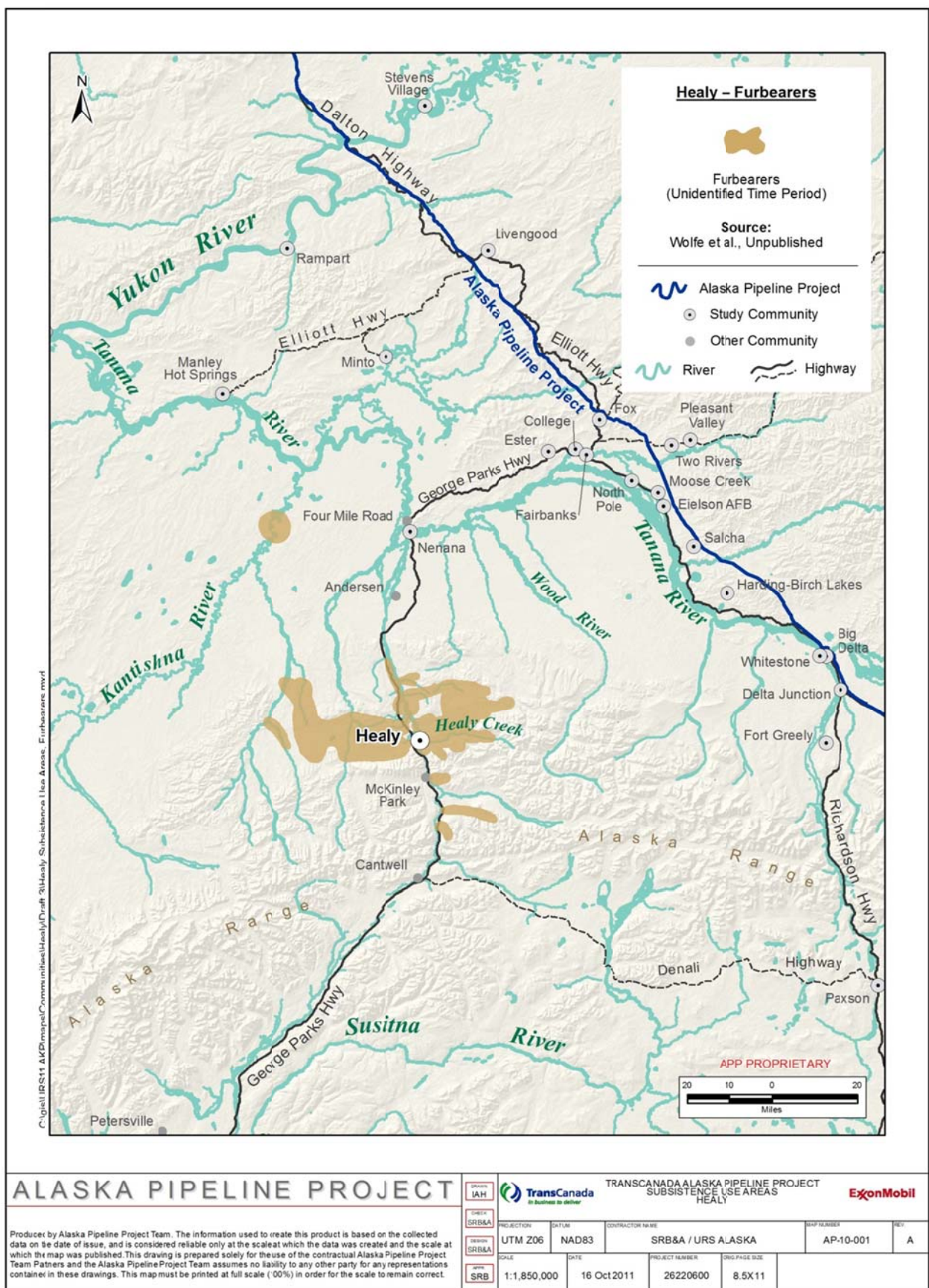


Figure E-112. Healy Subsistence Use Areas, Small Land Mammals



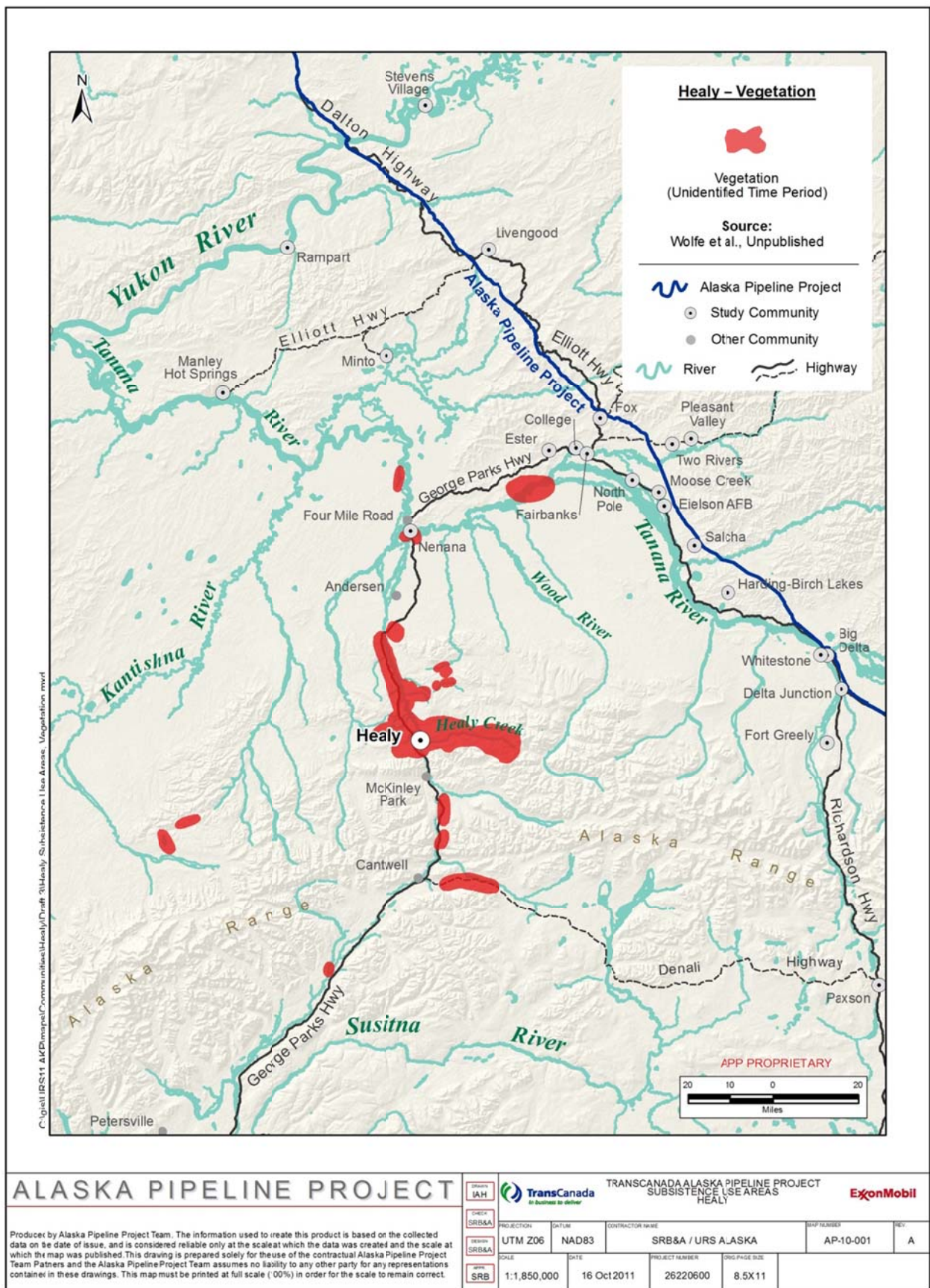


Figure E-113. Healy Subsistence Use Areas, Vegetation



## **MANLEY HOT SPRINGS**

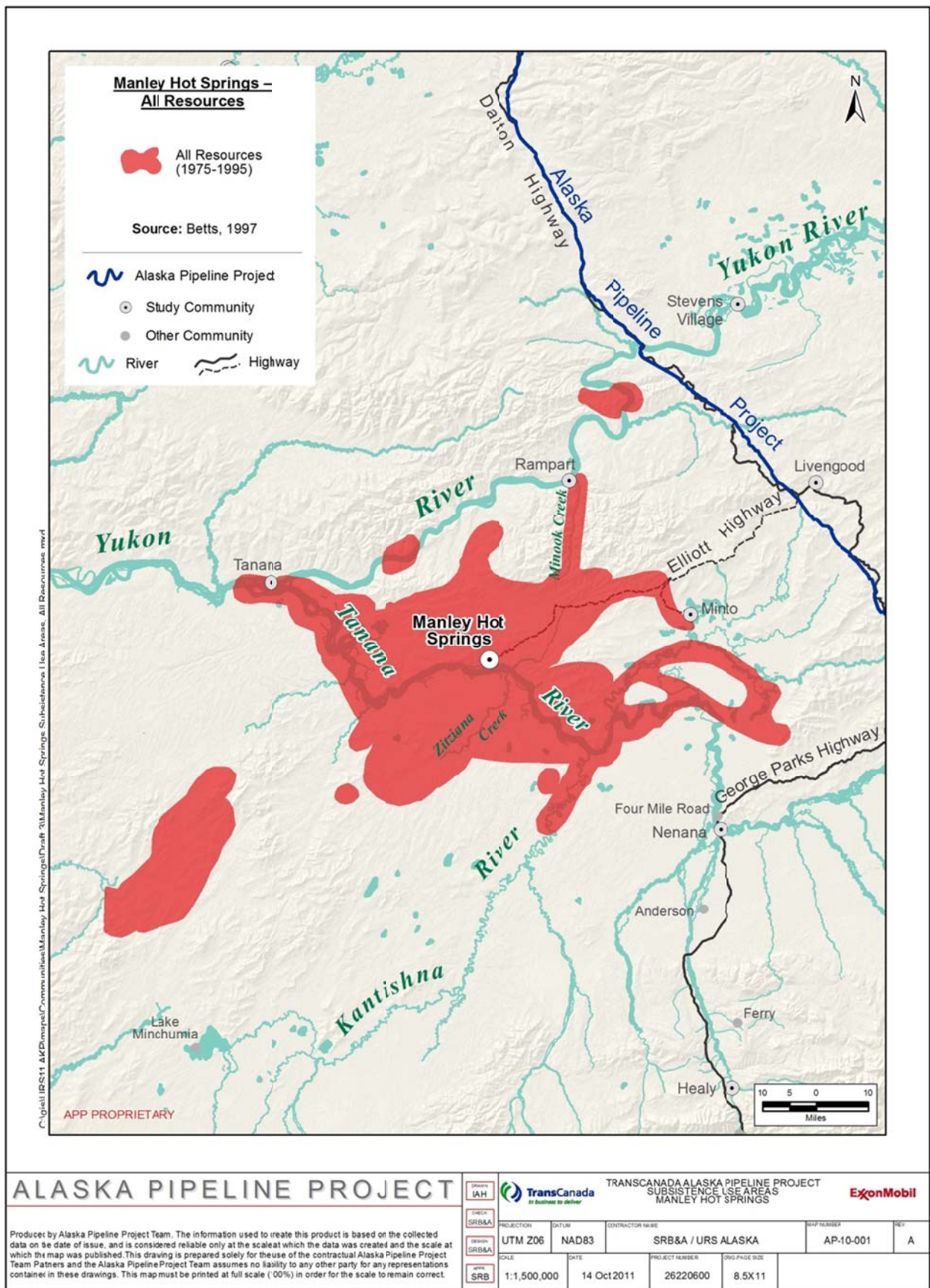


Figure E-114. Manley Hot Springs Subsistence Use Areas, All Resources



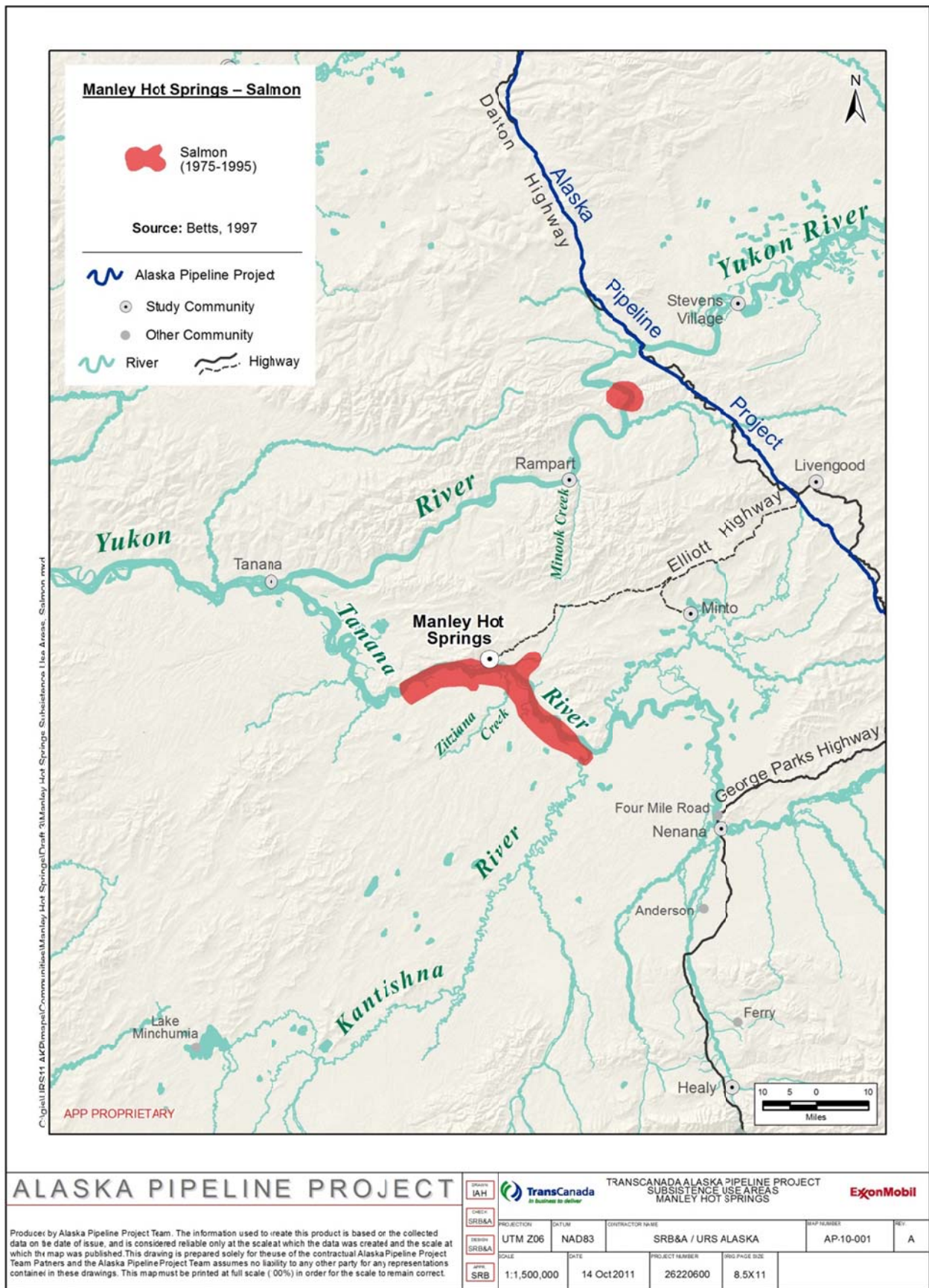
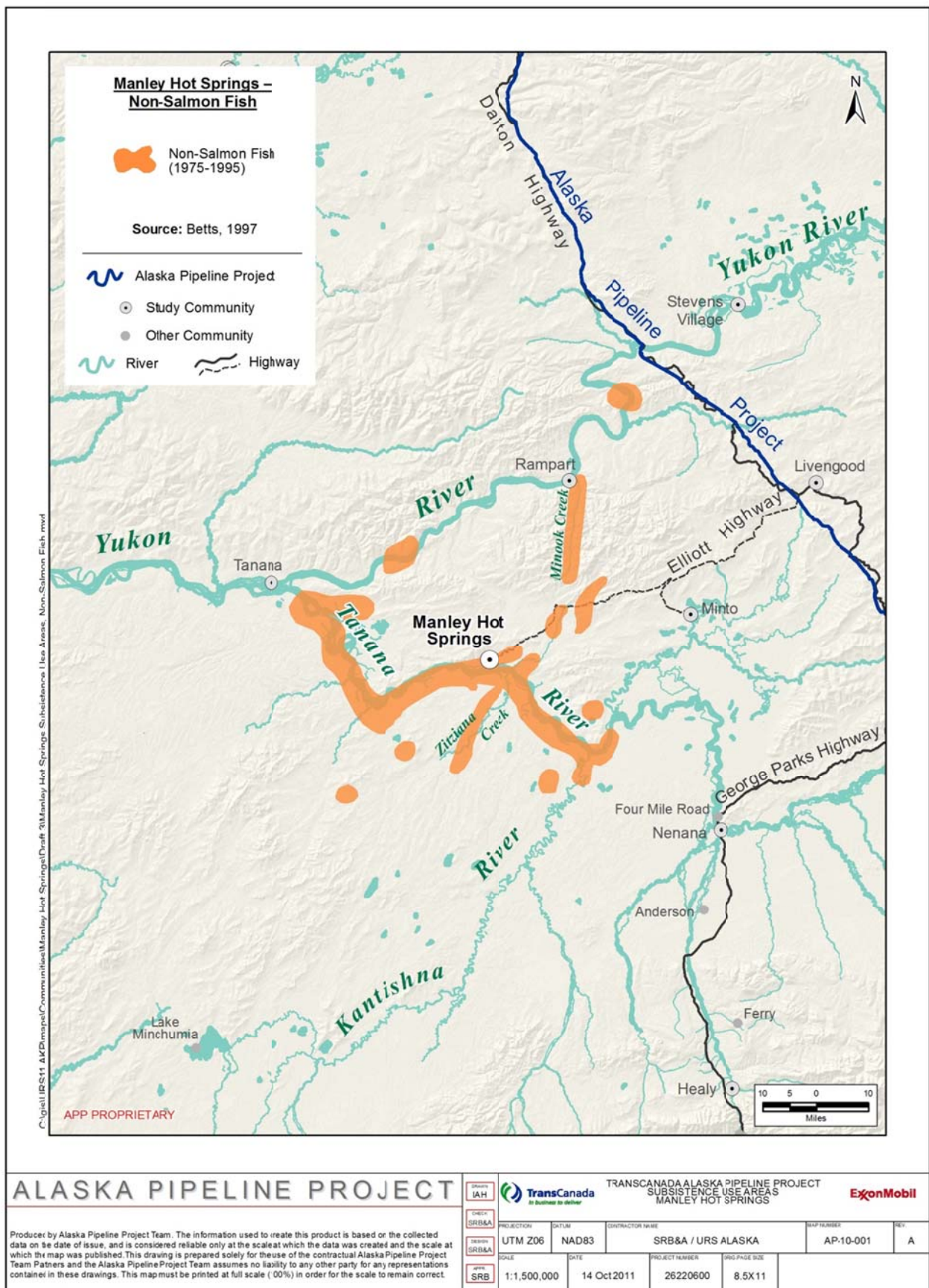
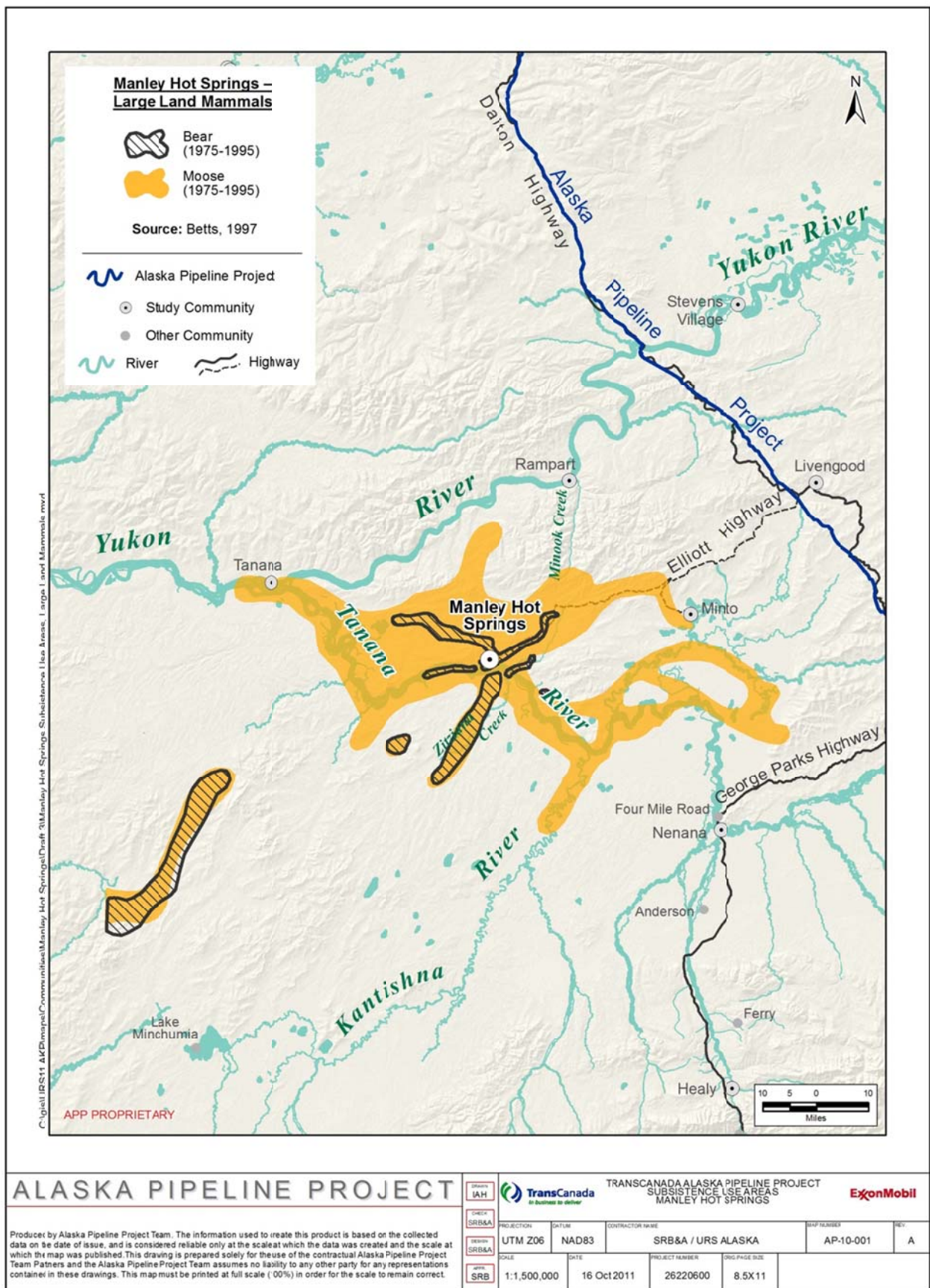


Figure E-115. Manley Hot Springs Subsistence Use Areas, Salmon



**Figure E-116. Manley Hot Springs Subsistence Use Areas, Non-Salmon Fish**





**Figure E-117. Manley Hot Springs Subsistence Use Areas, Large Land Mammals**

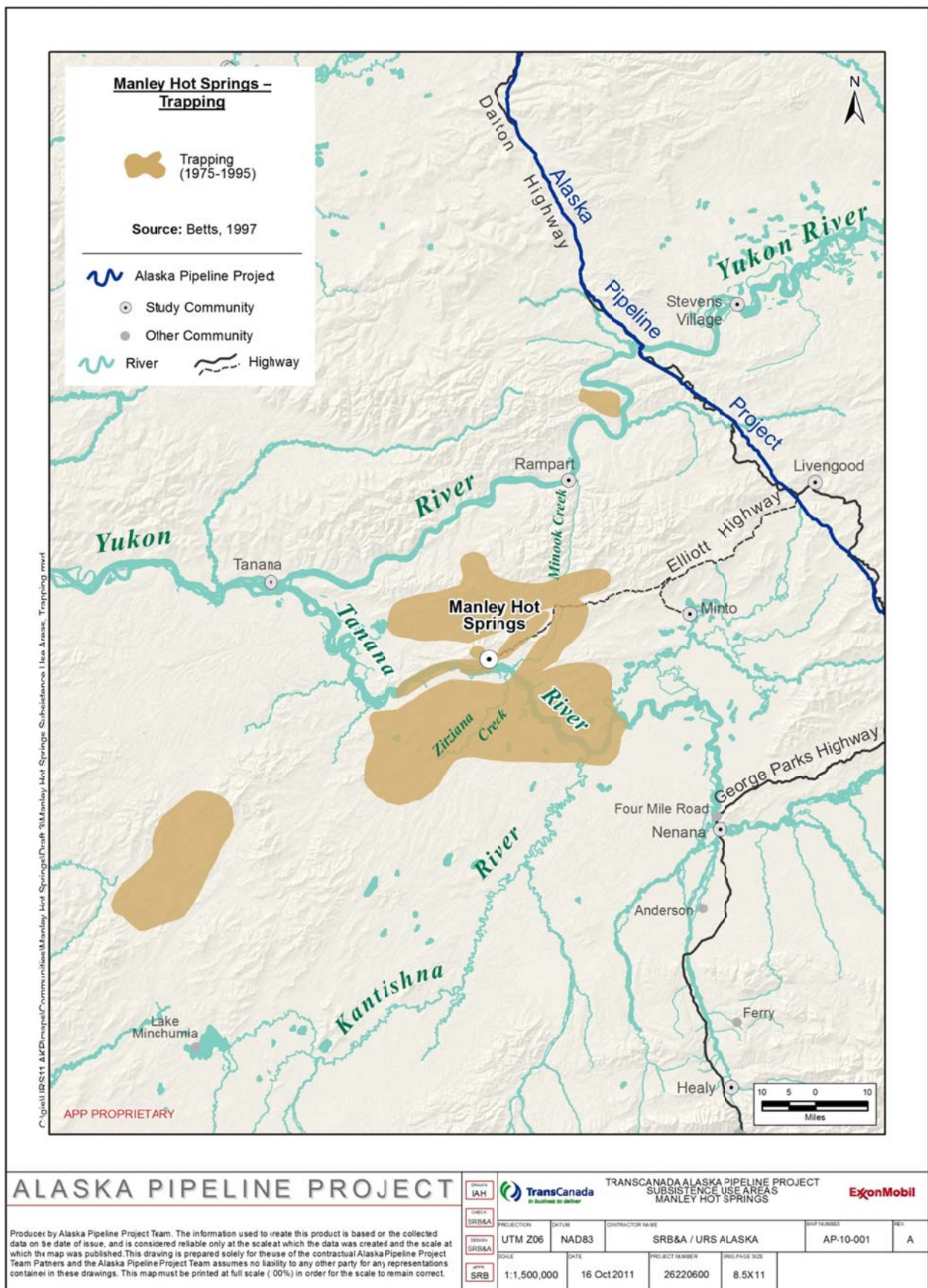
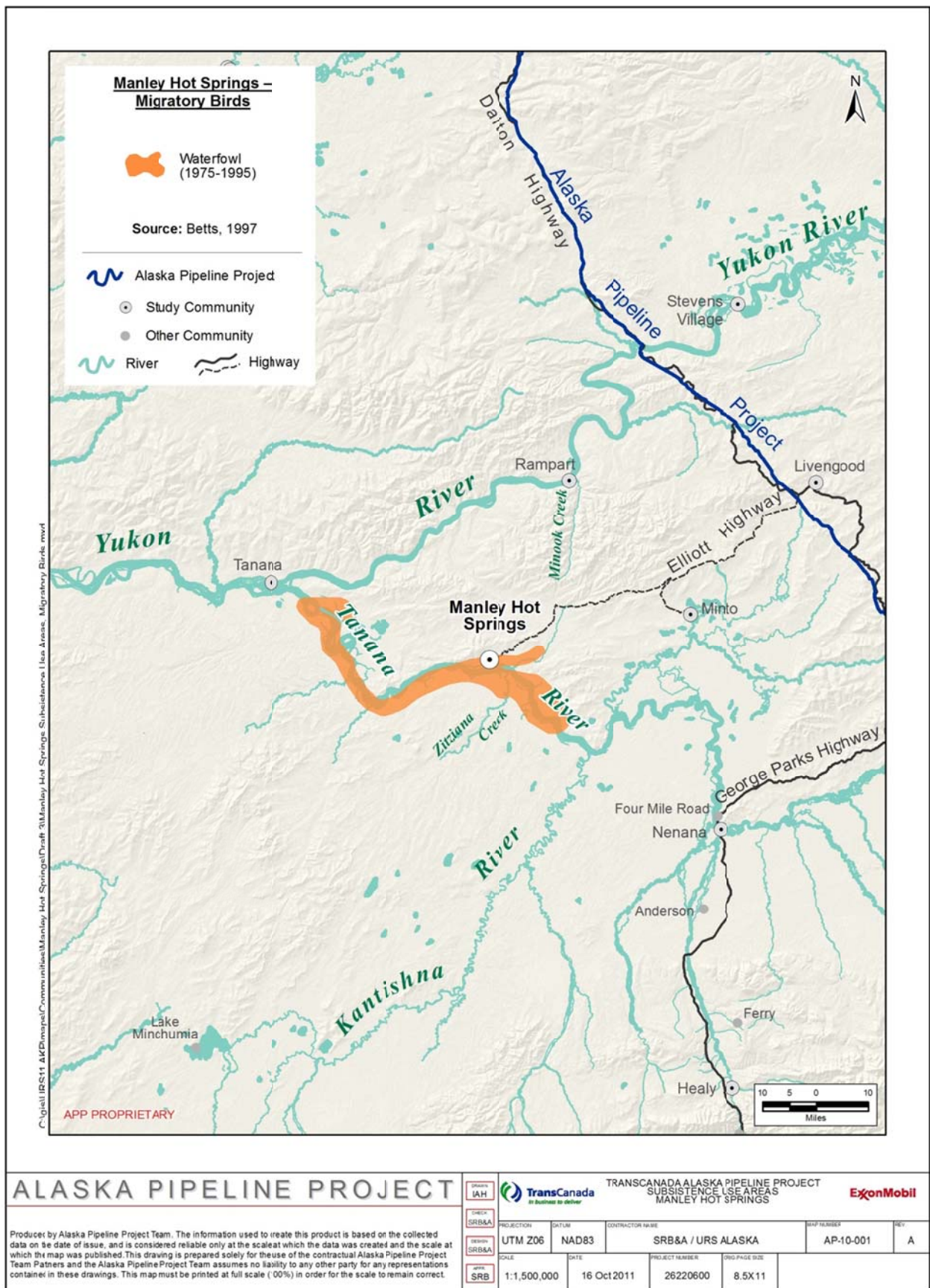
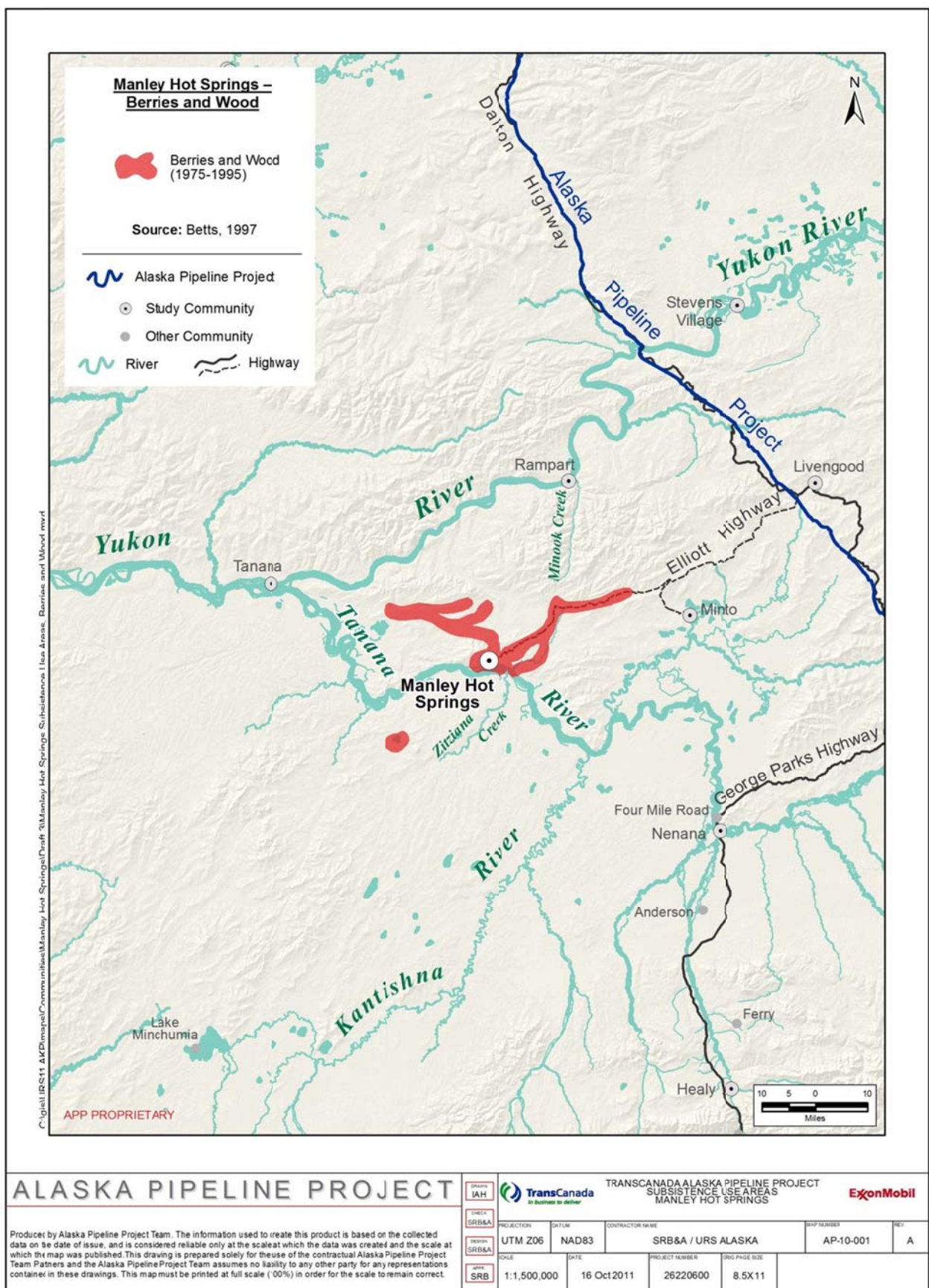


Figure E-118. Manley Hot Springs Subsistence Use Areas, Small Land Mammals





**Figure E-119. Manley Hot Springs Subsistence Use Areas, Migratory Birds**



**Figure E-120. Manley Hot Springs Subsistence Use Areas, Vegetation**