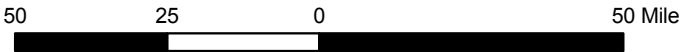




- Proposed Pipeline Corridor
- Valve Sites: 20 mile intervals
- Compressor Stations
- Trans Alaska Pipeline
- Major Roads

**Beluga to Fairbanks Natural Gas Pipeline
Overview Map**





Location
Map



- Proposed Pipeline Corridor
- Pipeline Milepost
- Valve Site
- Compressor Station
- Trans Alaska Pipeline
- Major Roads
- Native Allotments, as digitized by BLM
- Portions of Mapped Faults that intersect the proposed B2F Pipeline
(As mapped by USGS Open File 98-133-A)

Beluga to Fairbanks Natural Gas Pipeline

Figure 1 of 26

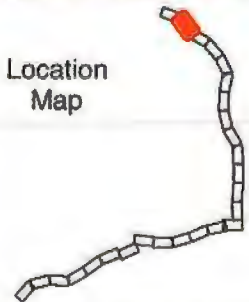


1 0.5 0 1 Mile

DOWL HKM

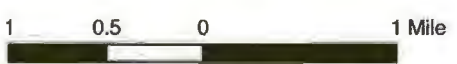
Alaska
Natural Gas Development Authority

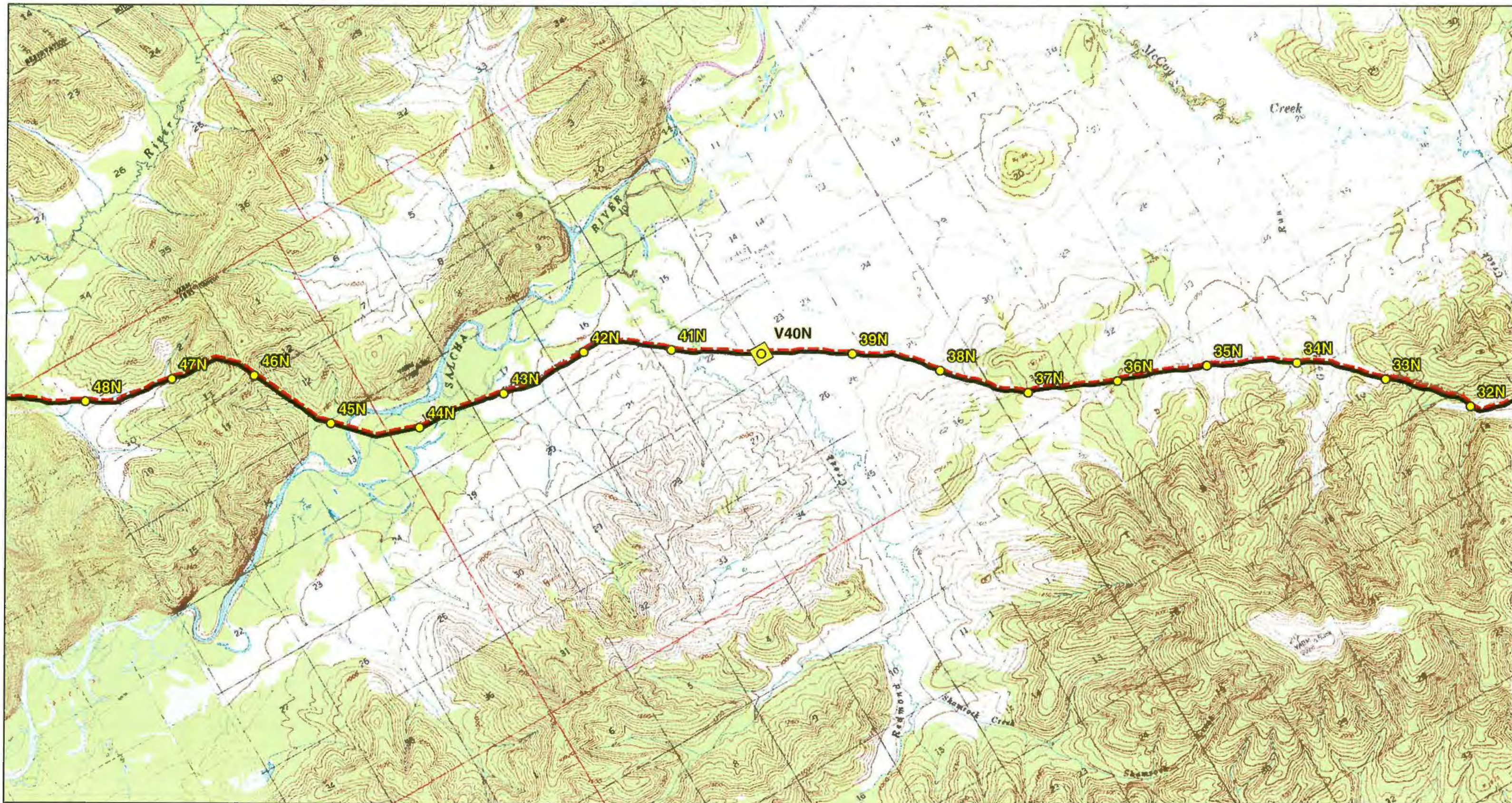
Date Printed: March 2, 2010



- Proposed Pipeline Corridor
- Pipeline Milepost
- Valve Site
- Compressor Station
- Trans Alaska Pipeline
- Major Roads
- Native Allotments, as digitized by BLM
- Portions of Mapped Faults that Intersect the proposed B2F Pipeline (As mapped by USGS Open File 98-133-A)

Beluga to Fairbanks Natural Gas Pipeline
Figure 2 of 26





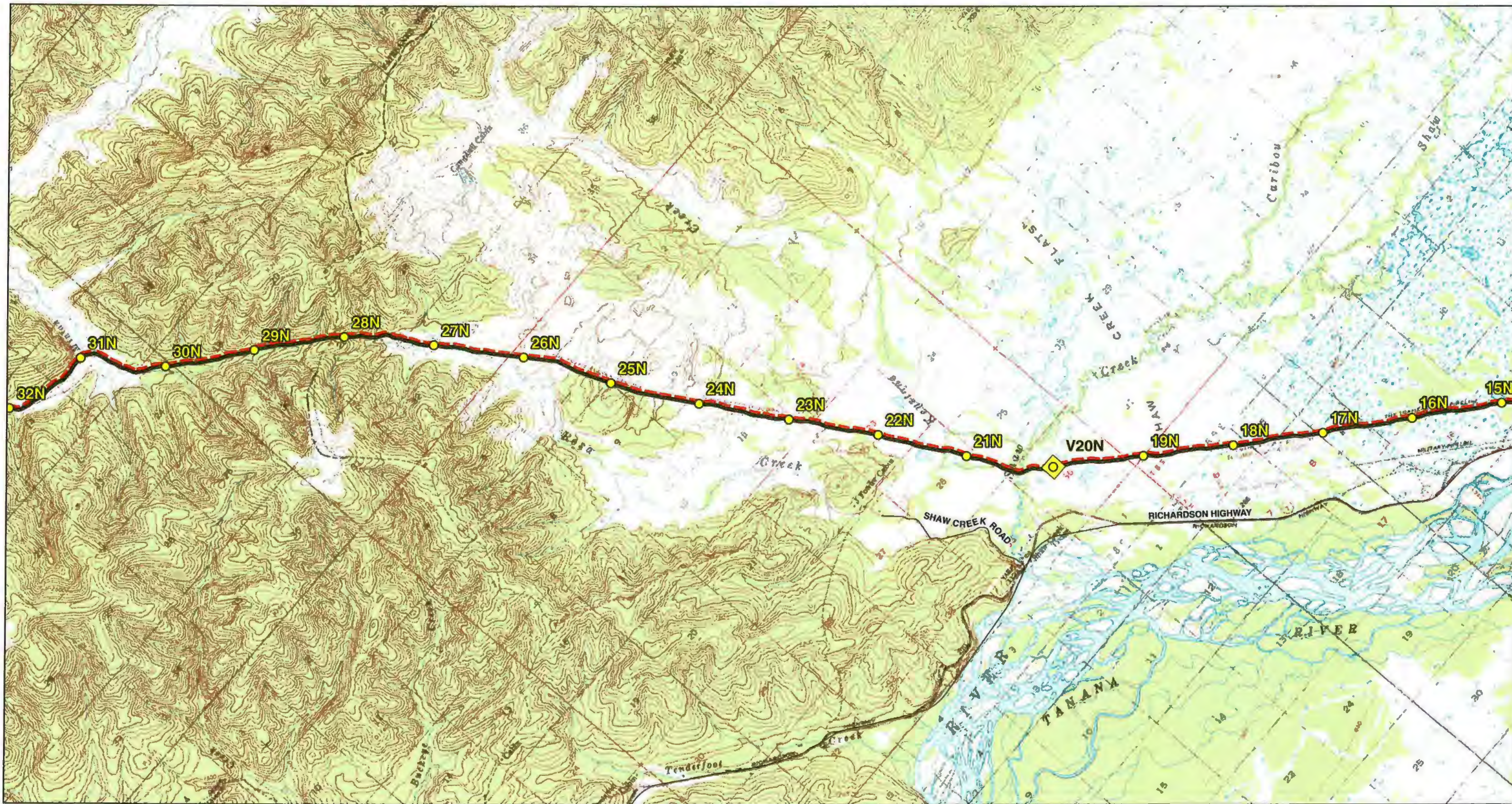
- Proposed Pipeline Corridor
- Pipeline Milepost
- Valve Site
- Compressor Station
- Trans Alaska Pipeline
- Major Roads
- Native Allotments, as digitized by BLM
- Portions of Mapped Faults that Intersect the proposed B2F Pipeline (As mapped by USGS Open File 98-133-A)

Beluga to Fairbanks Natural Gas Pipeline

Figure 3 of 26



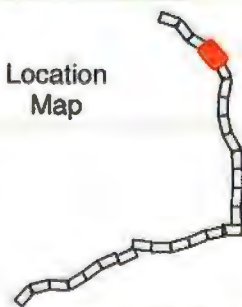
Date Printed: March 2, 2010



Beluga to Fairbanks Natural Gas Pipeline

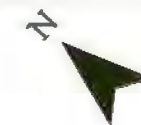
Figure 4 of 26

Location
Map



- Proposed Pipeline Corridor
- Pipeline Milepost
- Valve Site
- Compressor Station
- Trans Alaska Pipeline
- Major Roads
- Native Allotments, as digitized by BLM
- Portions of Mapped Faults that Intersect the proposed B2F Pipeline
(As mapped by USGS Open File 98-133-A)

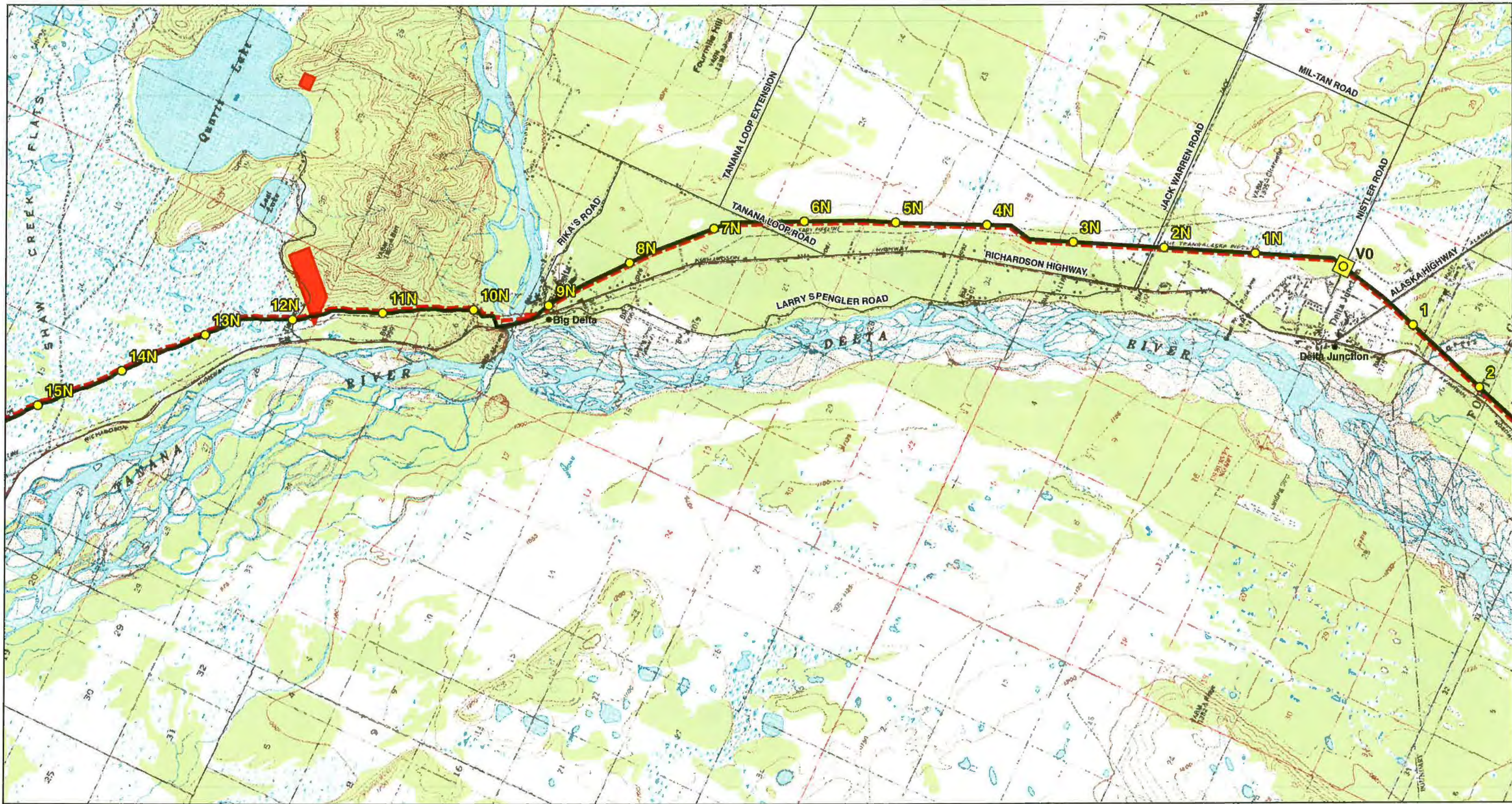
1 0.5 0 1 Mile



DOWL HKM

Alaska
Natural Gas Development Authority

Date Printed: March 2, 2010



Location
Map



- Proposed Pipeline Corridor
- Pipeline Milepost
- Valve Site
- Compressor Station
- Trans Alaska Pipeline
- Major Roads
- Native Allotments, as digitized by BLM
- Portions of Mapped Faults that Intersect the proposed B2F Pipeline
(As mapped by USGS Open File 98-133-A)

Beluga to Fairbanks Natural Gas Pipeline

Figure 5 of 26

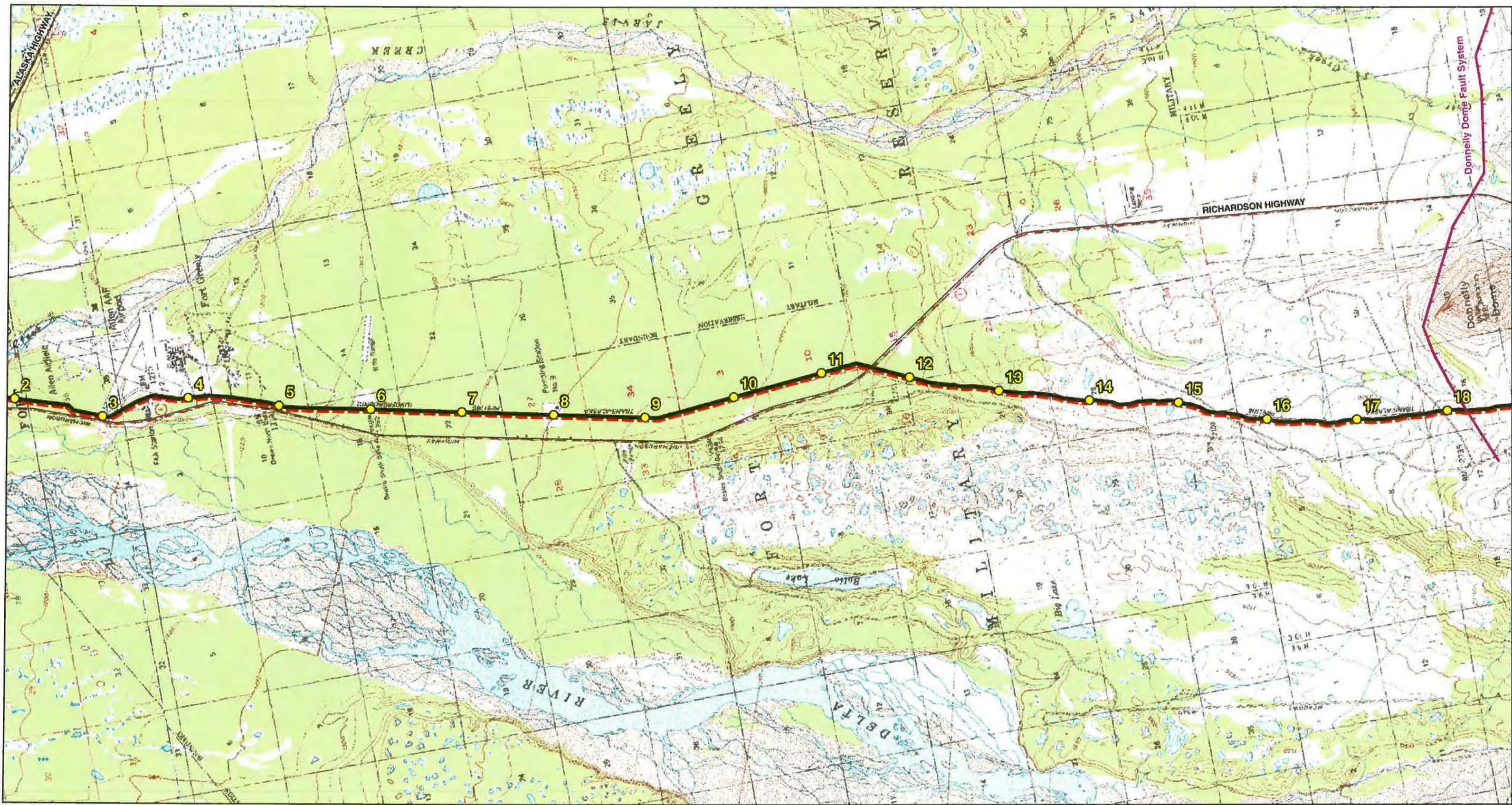
1 0.5 0 1 Mile



DOWL HKM

Alaska
Natural Gas Development Authority

Date Printed: March 2, 2010



Beluga to Fairbanks Natural Gas Pipeline

Figure 6 of 26

DOWL HKM

Alaska
Natural Gas Development Authority

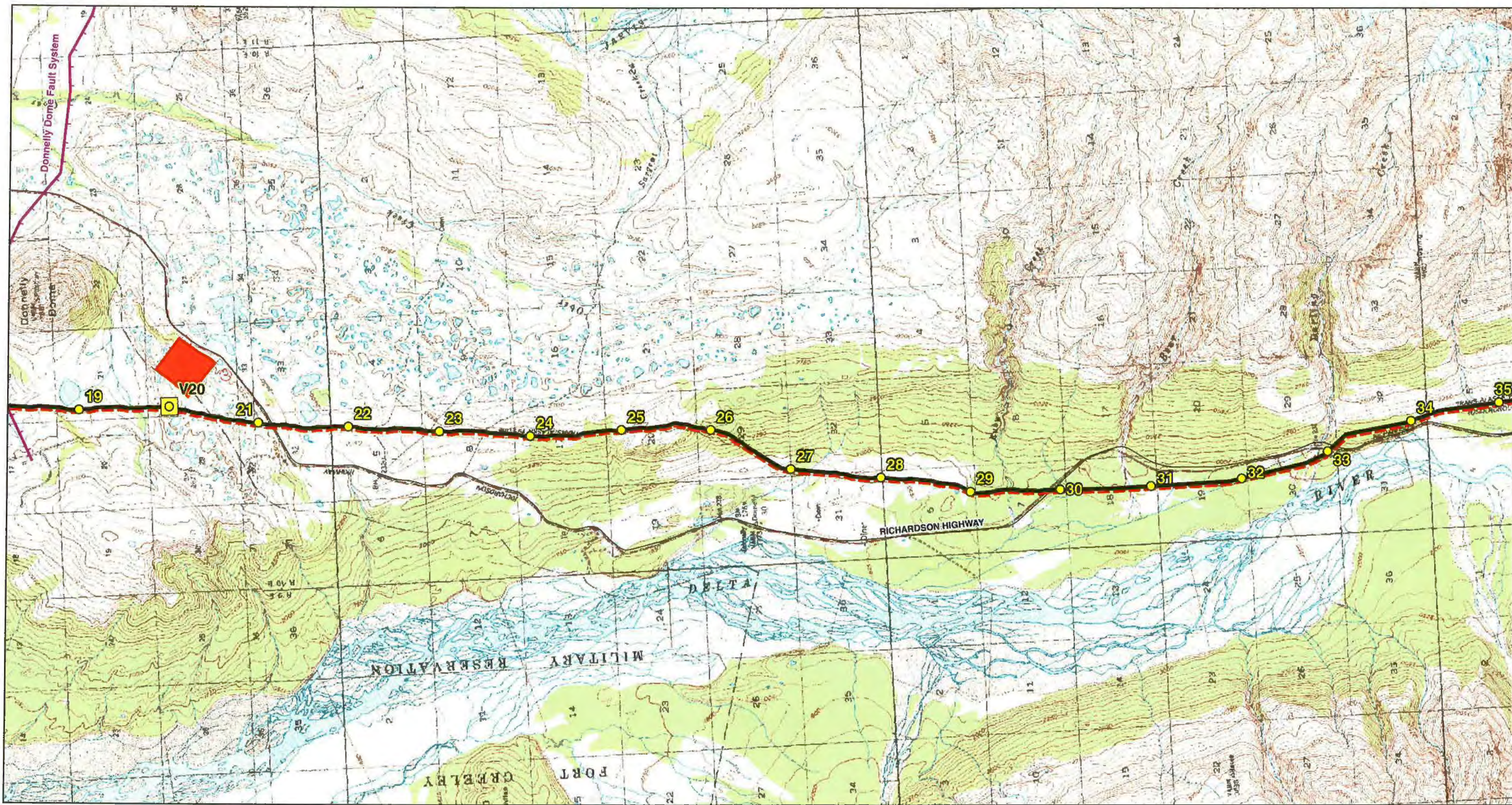
Date Printed: March 2, 2010

Location
Map

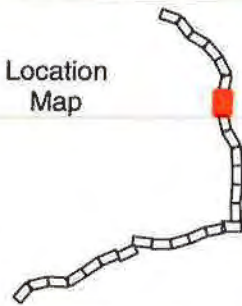
- Proposed Pipeline Corridor
- Pipeline Milepost
- Valve Site
- Compressor Station
- Trans Alaska Pipeline
- Major Roads
- Native Allotments, as digitized by BLM
- Portions of Mapped Faults that Intersect the proposed B2F Pipeline
(As mapped by USGS Open File 98-133-A)

1 0.5 0 1 Mile





Location
Map



- Proposed Pipeline Corridor
- Pipeline Milepost
- Valve Site
- Compressor Station
- Trans Alaska Pipeline
- Major Roads
- Native Allotments, as digitized by BLM
- Portions of Mapped Faults that intersect the proposed B2F Pipeline
(As mapped by USGS Open File 98-133-A)

Beluga to Fairbanks Natural Gas Pipeline

Figure 7 of 26

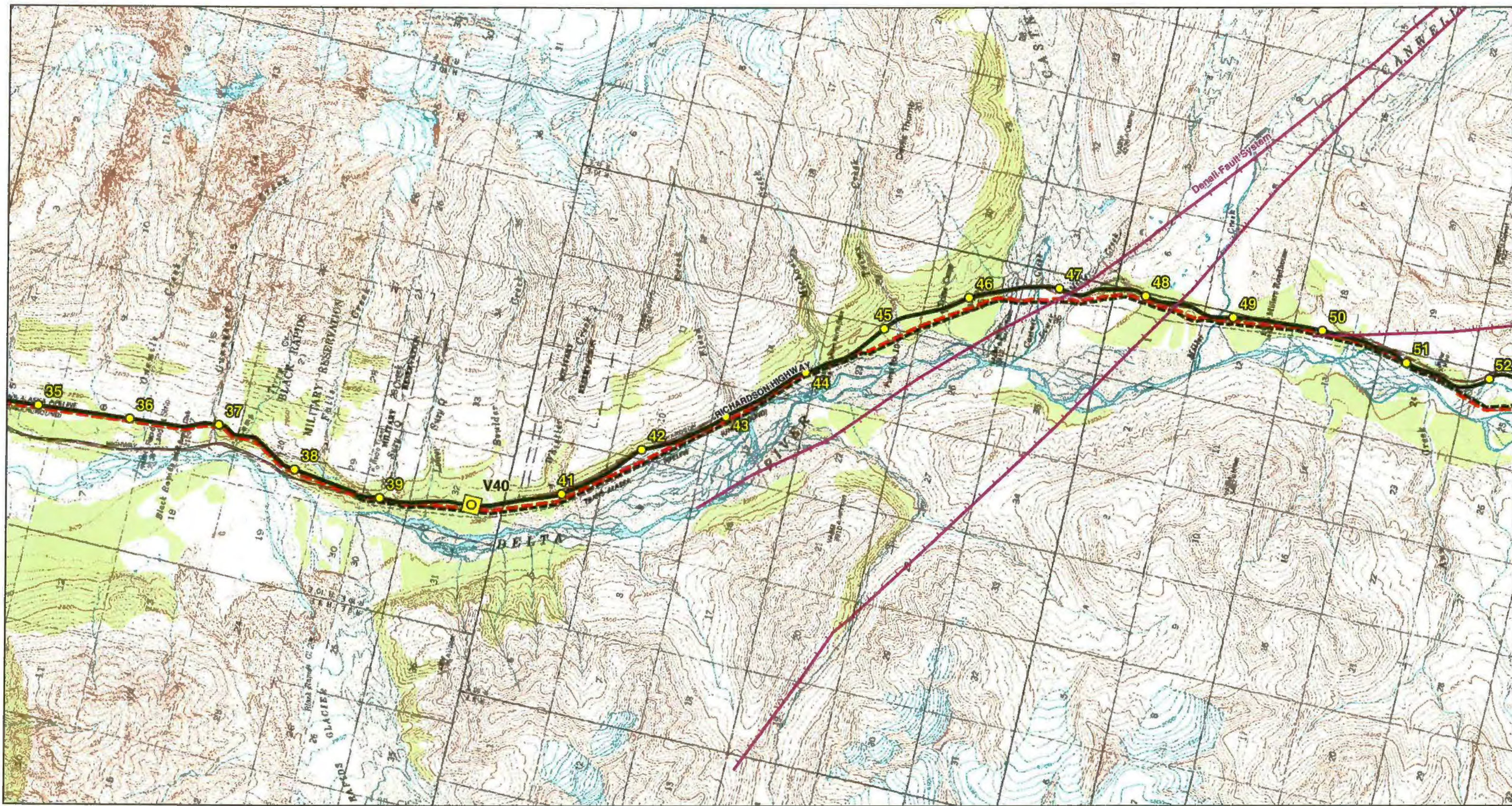
1 0.5 0 1 Mile



DOWL HKM

Alaska
Natural Gas Development Authority

Date Printed: March 2, 2010



Location
Map



- Proposed Pipeline Corridor
- Pipeline Milepost
- Valve Site
- Compressor Station
- - - Trans Alaska Pipeline
- Major Roads
- Native Allotments, as digitized by BLM
- Portions of Mapped Faults that Intersect the proposed B2F Pipeline
(As mapped by USGS Open File 98-133-A)

Beluga to Fairbanks Natural Gas Pipeline

Figure 8 of 26

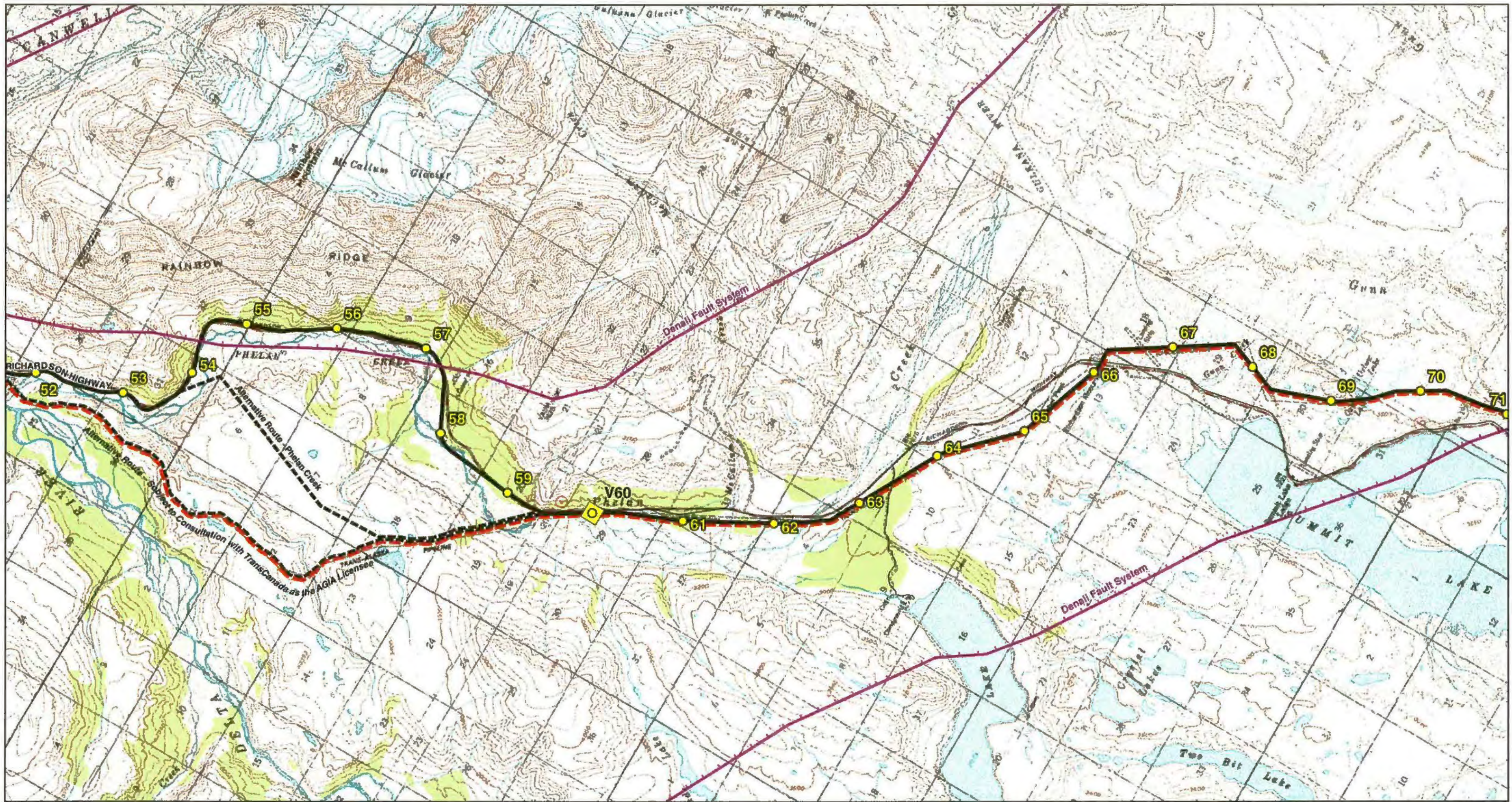


1 0.5 0 1 Mile

 DOWL HKM

 Alaska
Natural Gas Development Authority

Date Printed: March 2, 2010



Beluga to Fairbanks Natural Gas Pipeline

Figure 9 of 26



- Proposed Pipeline Corridor
- Pipeline Milepost
- Valve Site
- Compressor Station
- Trans Alaska Pipeline
- Major Roads
- Native Allotments, as digitized by BLM
- Portions of Mapped Faults that Intersect the proposed B2F Pipeline (As mapped by USGS Open File 98-133-A)

1 0.5 0 1 Mile



Date Printed: March 2, 2010



Location
Map



- Proposed Pipeline Corridor
- Pipeline Milepost
- Valve Site
- Compressor Station
- Trans Alaska Pipeline
- Major Roads
- Native Allotments, as digitized by BLM
- Portions of Mapped Faults that intersect the proposed B2F Pipeline
(As mapped by USGS Open File 98-133-A)

Beluga to Fairbanks Natural Gas Pipeline

Figure 10 of 26

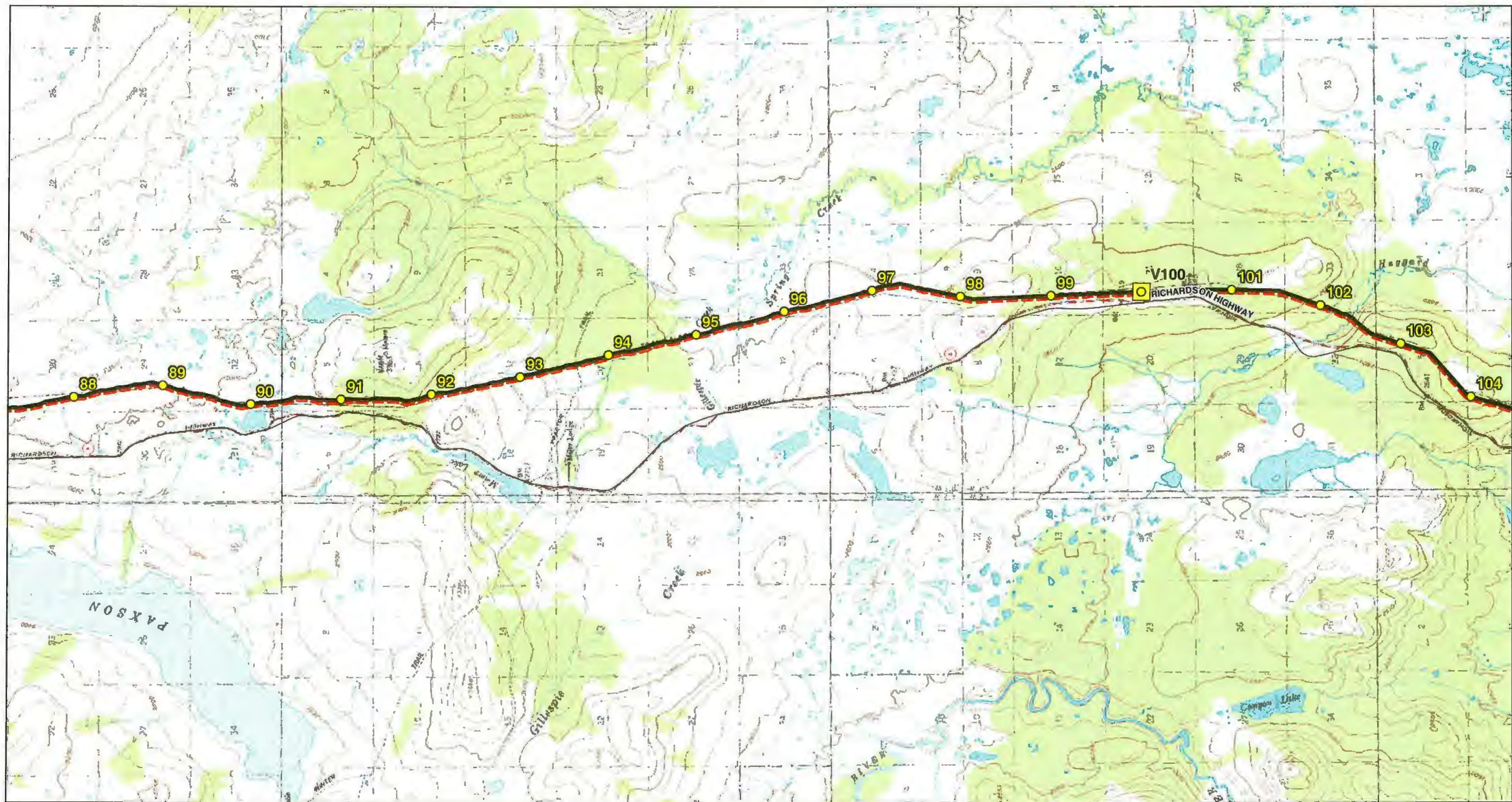
1 0.5 0 1 Mile



DOWL HKM

Alaska
Natural Gas Development Authority

Date Printed: March 2, 2010



Beluga to Fairbanks Natural Gas Pipeline Figure 11 of 26



- Proposed Pipeline Corridor
- Pipeline Milepost
- Valve Site
- Compressor Station
- Trans Alaska Pipeline
- Major Roads
- Native Allotments, as digitized by BLM
- Portions of Mapped Faults that Intersect the proposed B2F Pipeline
(As mapped by USGS Open File 98-133-A)

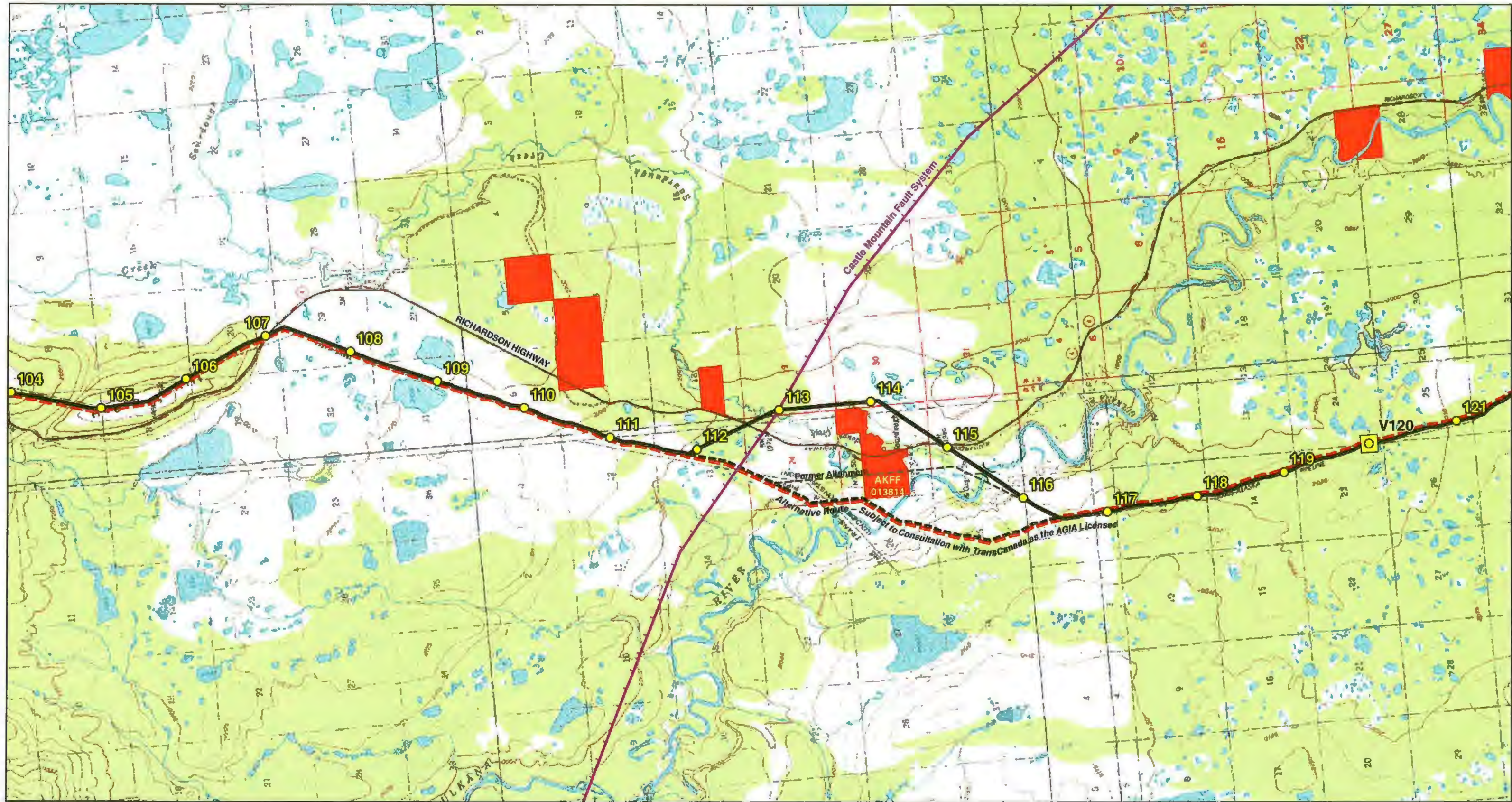
1 0.5 0 1 Mile



DOWL HKM

Alaska
Natural Gas Development Authority

Date Printed: March 2, 2010



Location
Map



- Proposed Pipeline Corridor
- Pipeline Milepost
- Valve Site
- ⊙ Compressor Station
- Trans Alaska Pipeline
- Major Roads
- Native Allotments, as digitized by BLM
- Portions of Mapped Faults that intersect the proposed B2F Pipeline (As mapped by USGS Open File 98-133-A)

Beluga to Fairbanks Natural Gas Pipeline

Figure 12 of 26

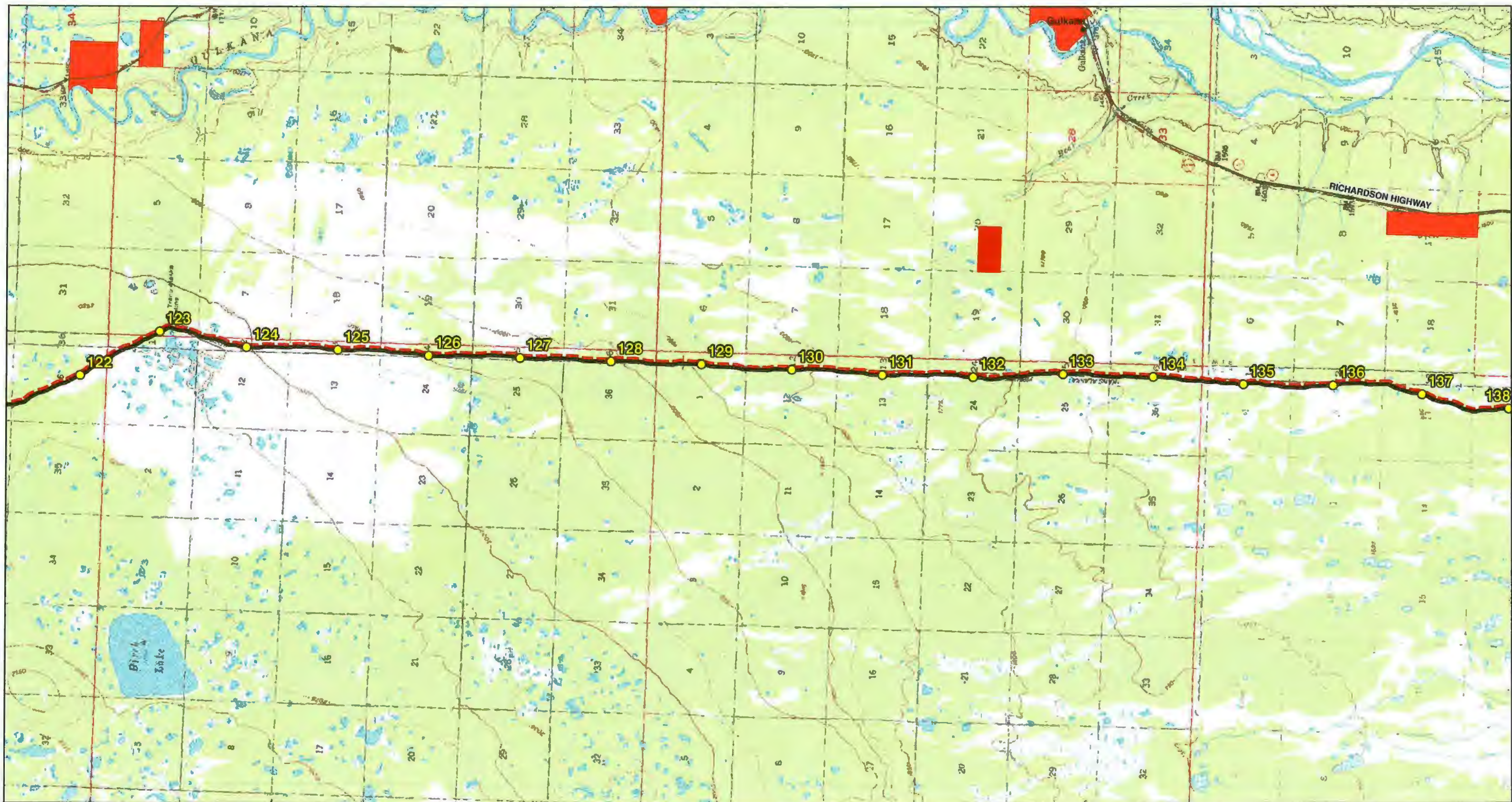
1 0.5 0 1 Mile



DOWL HKM

Alaska
Natural Gas Development Authority

Date Printed: March 2, 2010



Location
Map



- Proposed Pipeline Corridor
- Pipeline Milepost
- Valve Site
- Compressor Station
- Trans Alaska Pipeline
- Major Roads
- Native Allotments, as digitized by BLM
- Portions of Mapped Faults that Intersect the proposed B2F Pipeline
(As mapped by USGS Open File 98-133-A)

Beluga to Fairbanks Natural Gas Pipeline

Figure 13 of 26

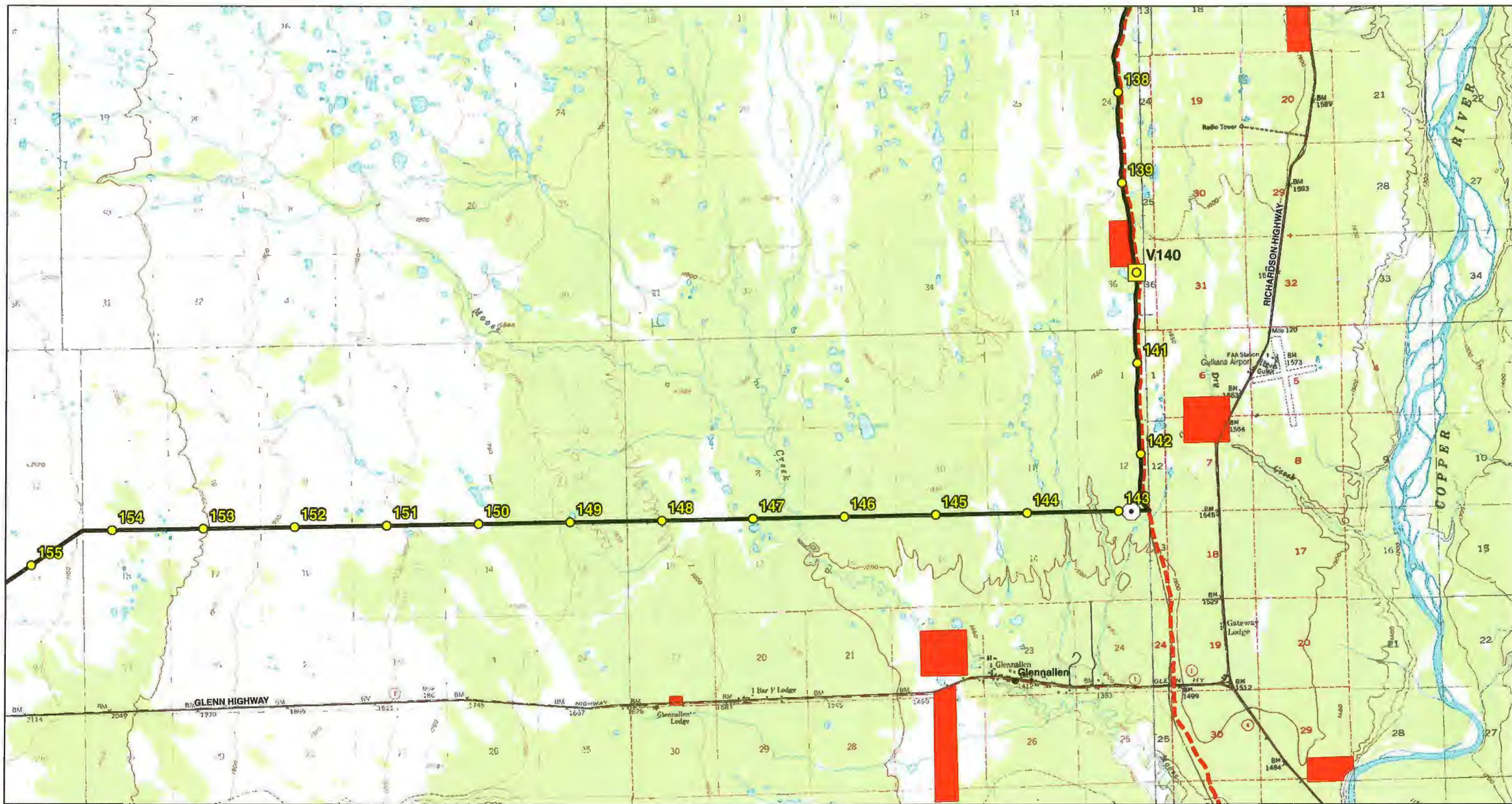


1 0.5 0 1 Mile

DOWL HKM

Alaska
Natural Gas Development Authority

Date Printed: March 2, 2010



Location
Map



- Proposed Pipeline Corridor
- Pipeline Milepost
- Valve Site
- ⊙ Compressor Station
- - - Trans Alaska Pipeline
- Major Roads
- Native Allotments, as digitized by BLM
- - - Portions of Mapped Faults that Intersect the proposed B2F Pipeline
(As mapped by USGS Open File 98-133-A)

Beluga to Fairbanks Natural Gas Pipeline

Figure 14 of 26

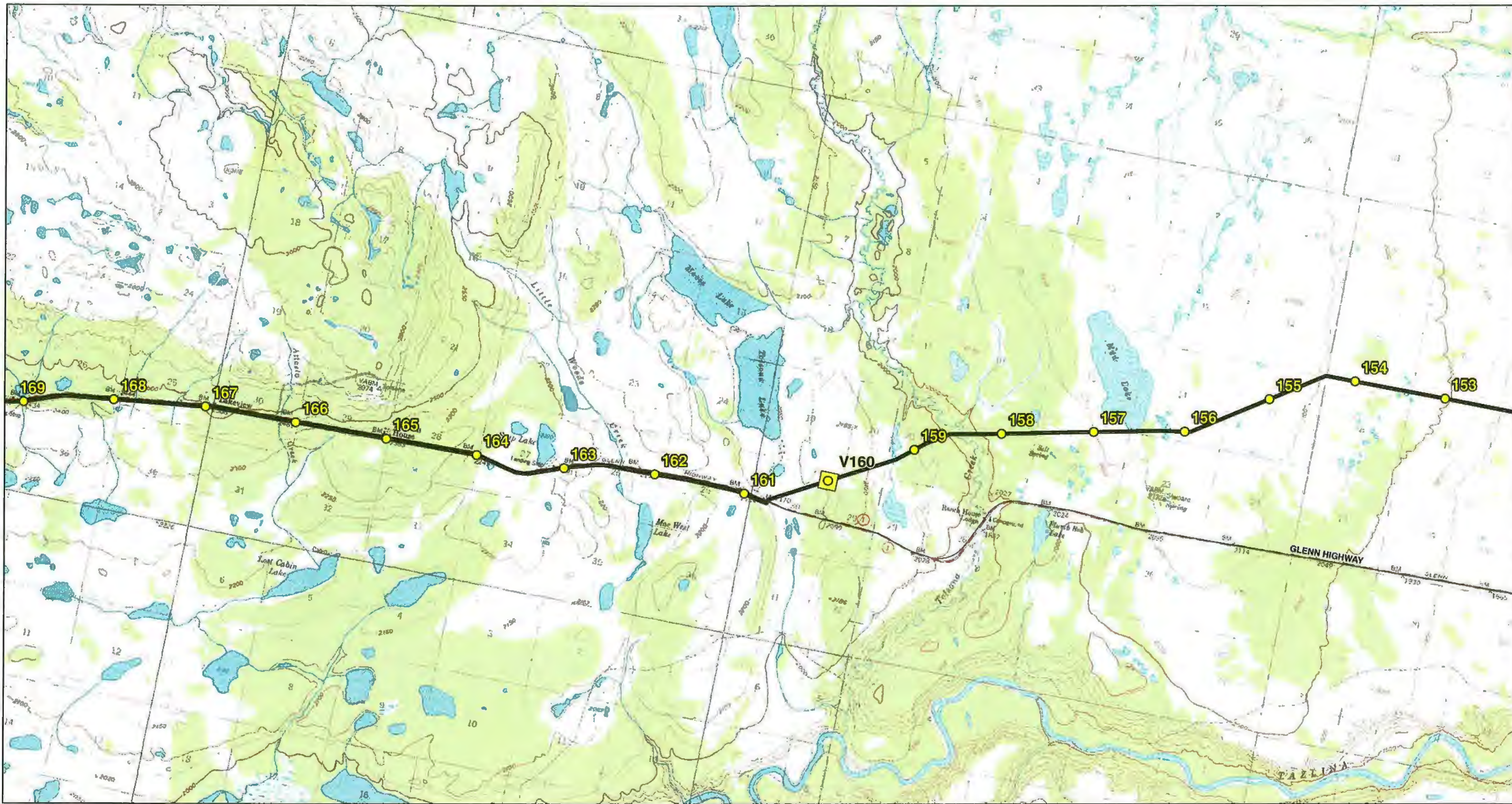


1 0.5 0 1 Mile

DOWL HKM

Alaska
Natural Gas Development Authority

Date Printed: March 2, 2010



Location
Map



- Proposed Pipeline Corridor
- Pipeline Milepost
- Valve Site
- Compressor Station
- Trans Alaska Pipeline
- Major Roads
- Native Allotments, as digitized by BLM
- Portions of Mapped Faults that Intersect the proposed B2F Pipeline
(As mapped by USGS Open File 98-133-A)

Beluga to Fairbanks Natural Gas Pipeline

Figure 15 of 26



1 0.5 0 1 Mile

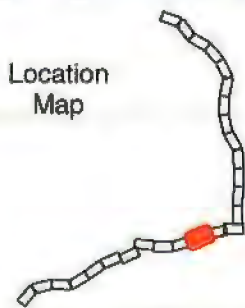


Alaska
Natural Gas Development Authority

Date Printed: March 2, 2010



Location
Map



- Proposed Pipeline Corridor
- Pipeline Milepost
- Valve Site
- Compressor Station
- Trans Alaska Pipeline
- Major Roads
- Native Allotments, as digitized by BLM
- Portions of Mapped Faults that Intersect the proposed B2F Pipeline (As mapped by USGS Open File 98-133-A)

Beluga to Fairbanks Natural Gas Pipeline

Figure 16 of 26

1 0.5 0 1 Mile



DOWL HKM

Alaska
Natural Gas Development Authority

Date Printed: March 2, 2010



Location
Map



- Proposed Pipeline Corridor
- Pipeline Milepost
- Valve Site
- Compressor Station
- Trans Alaska Pipeline
- Major Roads
- Native Allotments, as digitized by BLM
- Portions of Mapped Faults that intersect the proposed B2F Pipeline (As mapped by USGS Open File 98-133-A)

Beluga to Fairbanks Natural Gas Pipeline

Figure 17 of 26

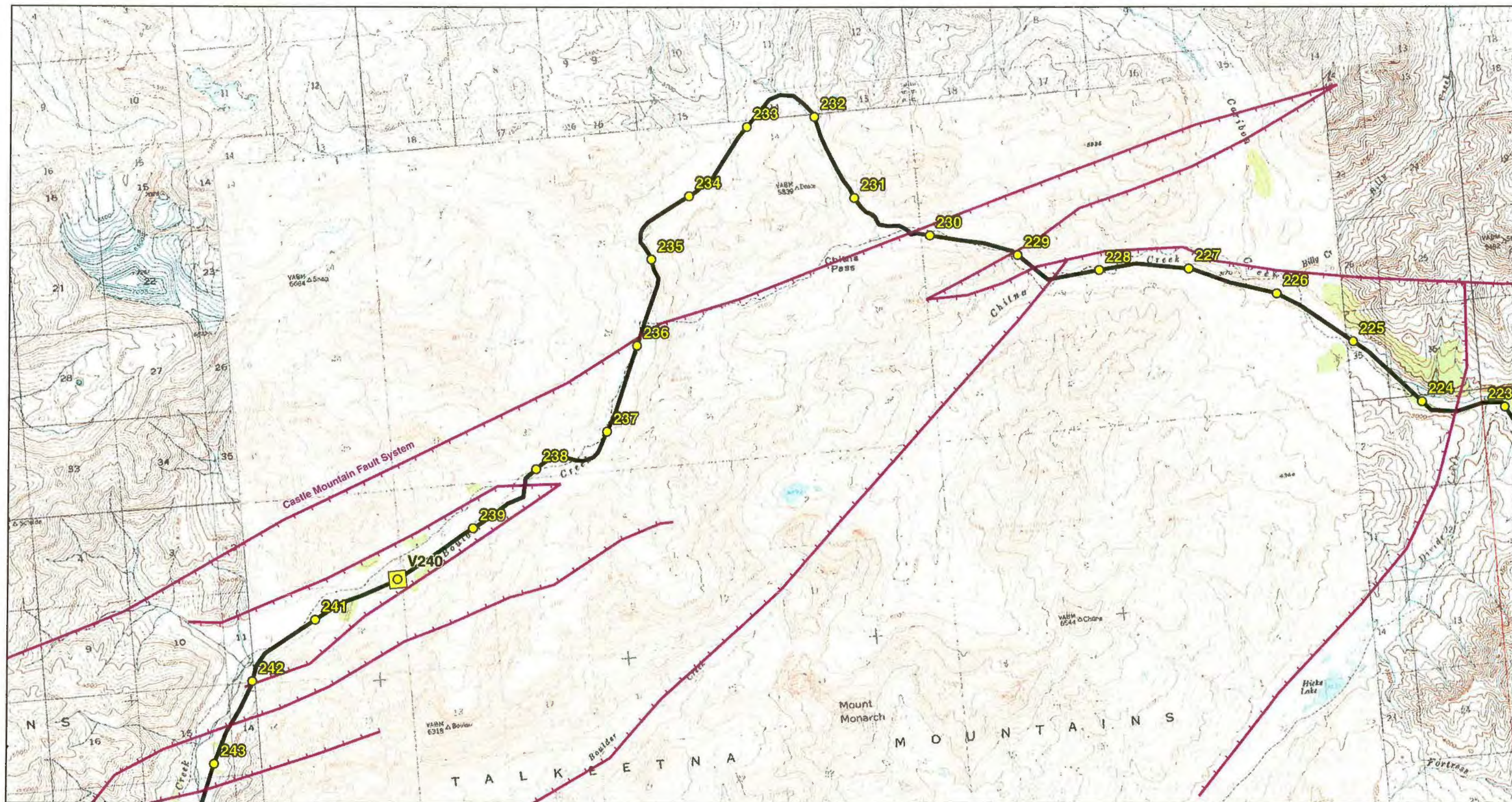
1 0.5 0 1 Mile



DOWL HKM

Alaska
Natural Gas Development Authority

Date Printed: March 2, 2010



Beluga to Fairbanks Natural Gas Pipeline

Figure 19 of 26



Location
Map



- Proposed Pipeline Corridor
- Pipeline Milepost
- Valve Site
- Compressor Station
- Trans Alaska Pipeline
- Major Roads
- Native Allotments, as digitized by BLM
- Portions of Mapped Faults that Intersect the proposed B2F Pipeline
(As mapped by USGS Open File 98-133-A)



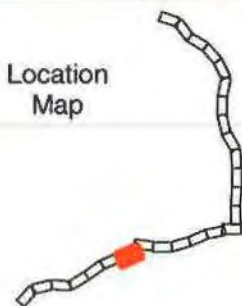
Date Printed: March 2, 2010



Beluga to Fairbanks Natural Gas Pipeline

Figure 20 of 26

Location
Map



- Proposed Pipeline Corridor
- Pipeline Milepost
- Valve Site
- Compressor Station
- Trans Alaska Pipeline
- Major Roads
- Native Allotments, as digitized by BLM
- Portions of Mapped Faults that Intersect the proposed B2F Pipeline (As mapped by USGS Open File 98-133-A)

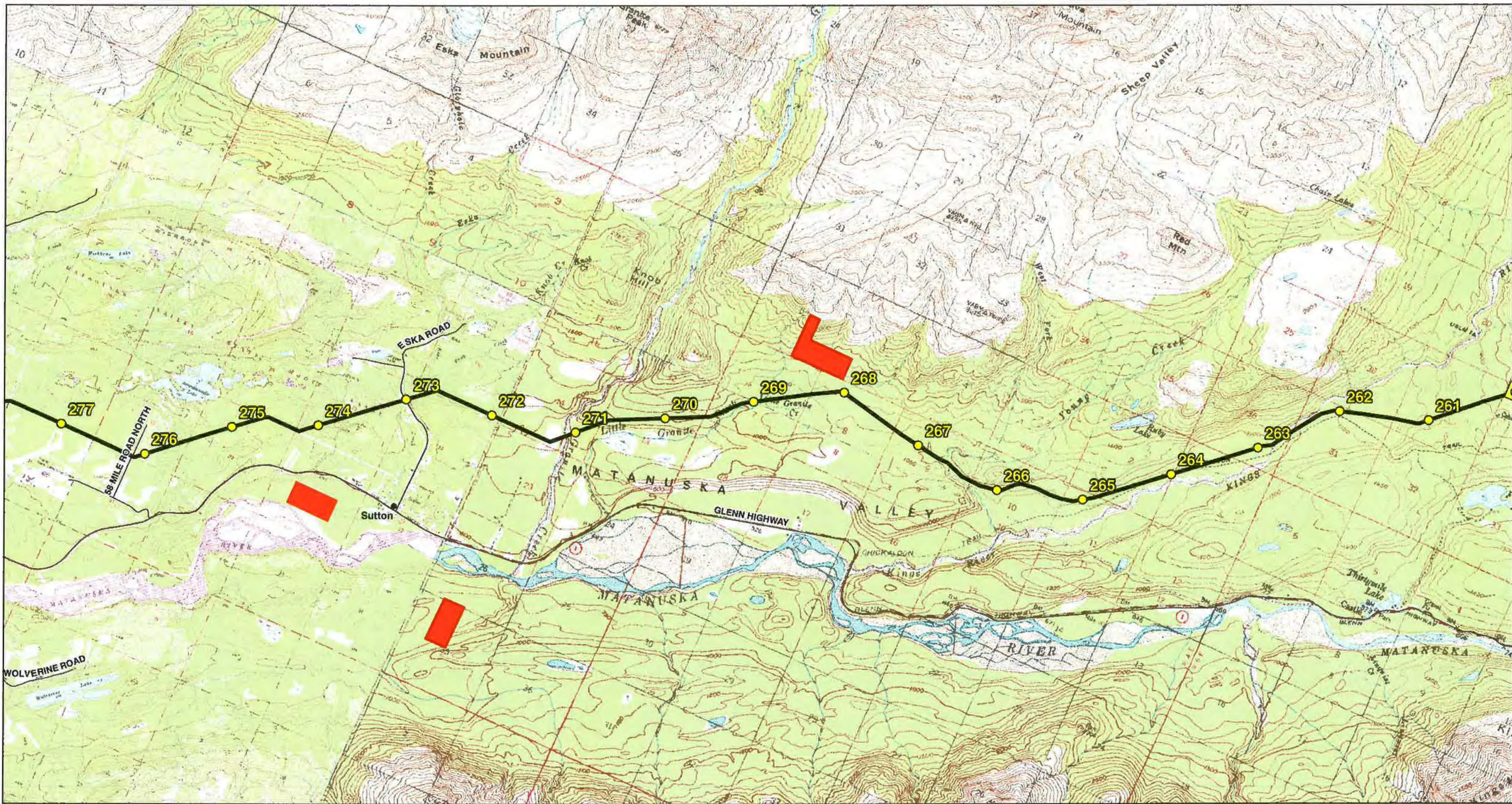
1 0.5 0 1 Mile



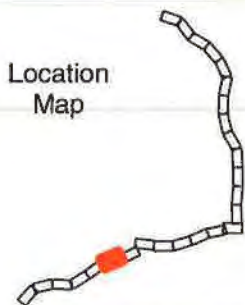
DOWL HKM

Alaska
Natural Gas Development Authority

Date Printed: March 2, 2010



Location
Map



- Proposed Pipeline Corridor
- Pipeline Milepost
- Valve Site
- Compressor Station
- Trans Alaska Pipeline
- Major Roads
- Native Allotments, as digitized by BLM
- Portions of Mapped Faults that intersect the proposed B2F Pipeline
(As mapped by USGS Open File 98-133-A)

Beluga to Fairbanks Natural Gas Pipeline

Figure 21 of 26

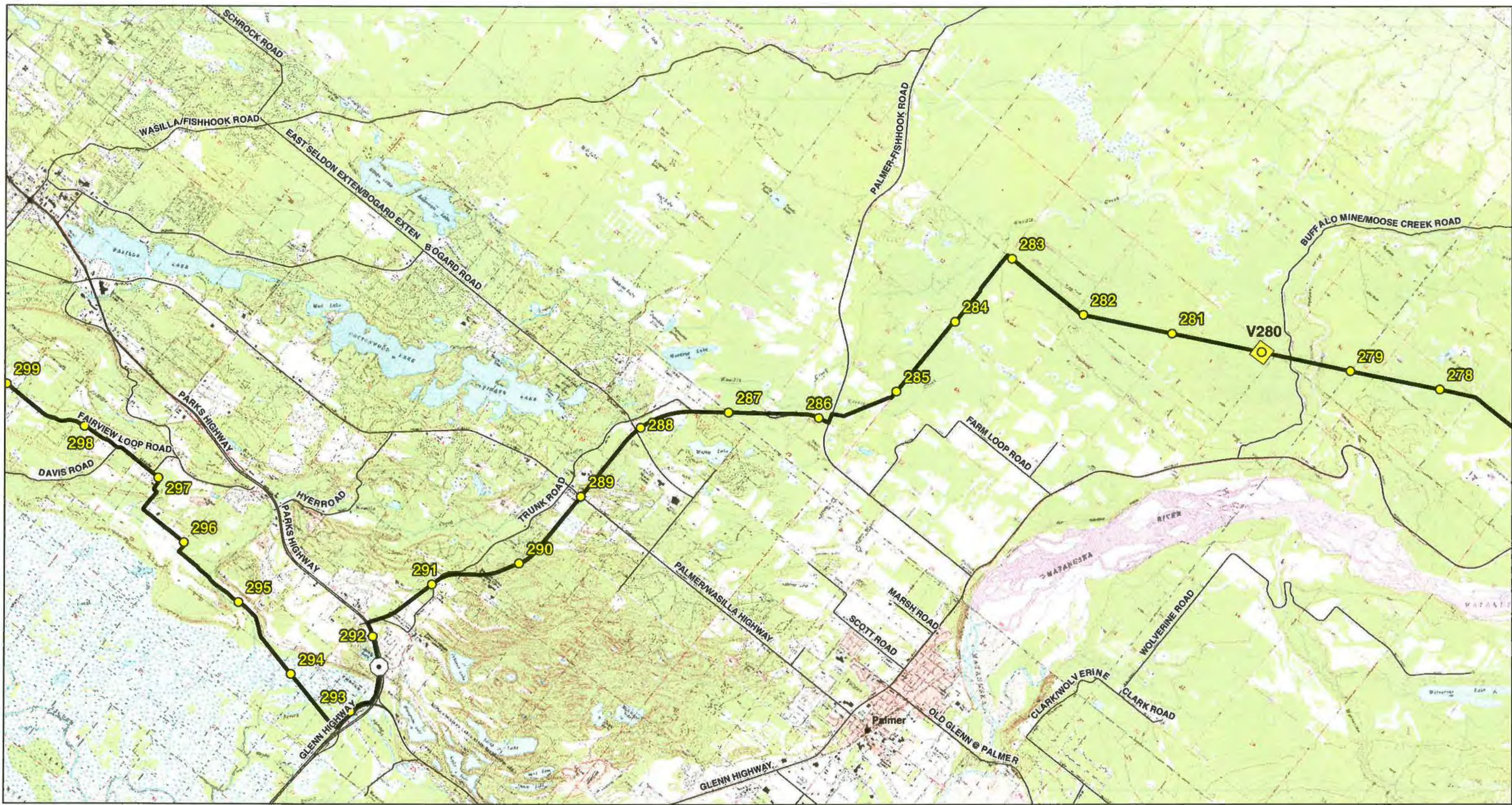


1 0.5 0 1 Mile

DOWL HKM

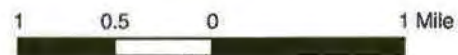
Alaska
Natural Gas Development Authority

Date Printed: March 2, 2010



- Proposed Pipeline Corridor
- Pipeline Milepost
- Valve Site
- Compressor Station
- Trans Alaska Pipeline
- Major Roads
- Native Allotments, as digitized by BLM
- Portions of Mapped Faults that Intersect the proposed B2F Pipeline (As mapped by USGS Open File 98-133-A)

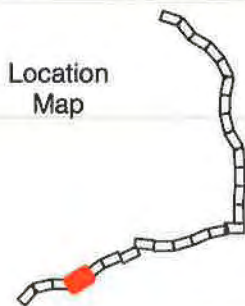
Beluga to Fairbanks Natural Gas Pipeline
Figure 22 of 26



Date Printed: March 2, 2010



Location
Map



- Proposed Pipeline Corridor
- Pipeline Milepost
- Valve Site
- Compressor Station
- Trans Alaska Pipeline
- Major Roads
- Native Allotments, as digitized by BLM
- Portions of Mapped Faults that Intersect the proposed B2F Pipeline
(As mapped by USGS Open File 98-133-A)

Beluga to Fairbanks Natural Gas Pipeline

Figure 23 of 26

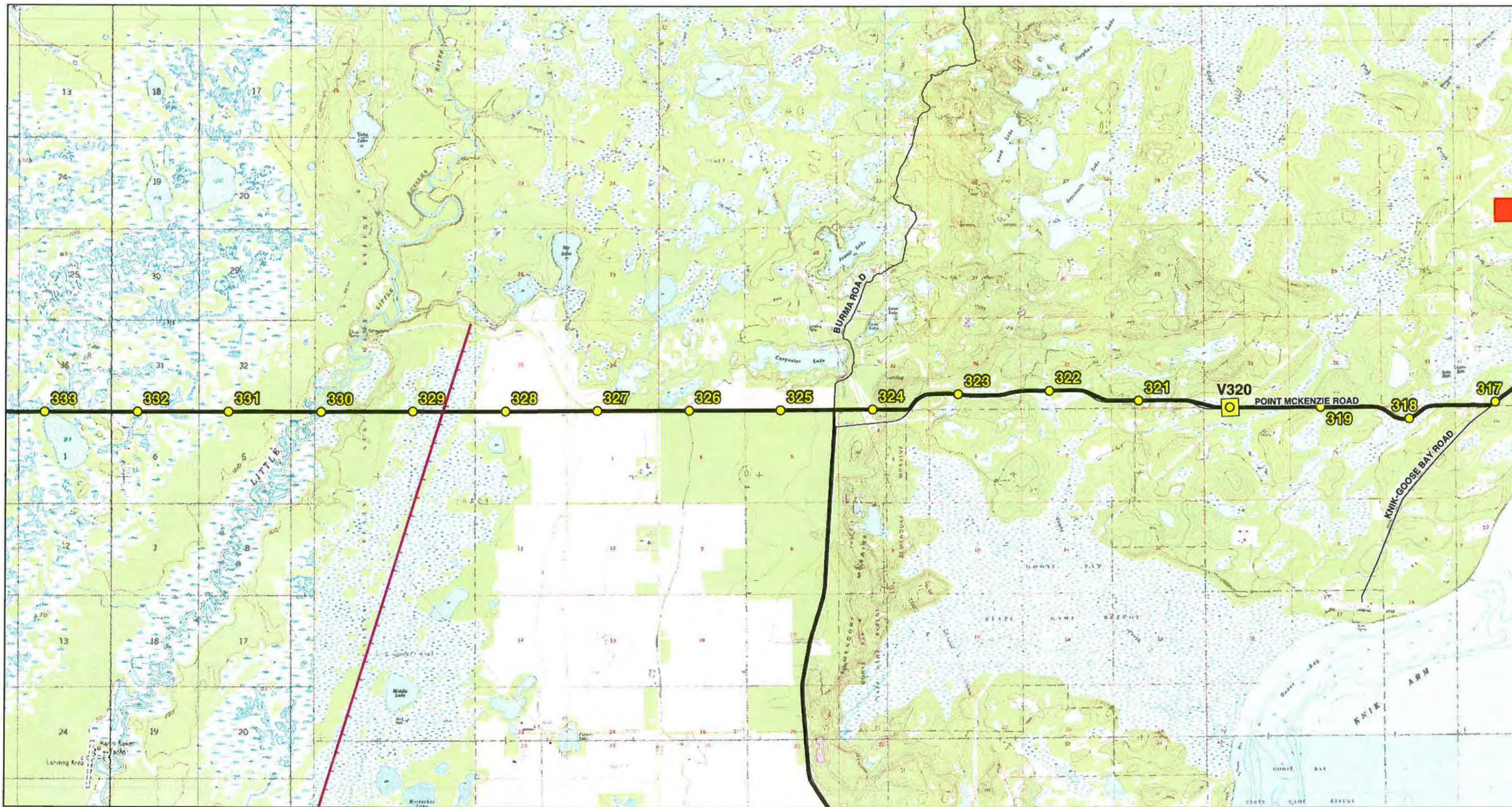
1 0.5 0 1 Mile



DOWL HKM

Alaska
Natural Gas Development Authority

Date Printed: March 2, 2010



Location
Map



- Proposed Pipeline Corridor
- Pipeline Milepost
- Valve Site
- Compressor Station
- Trans Alaska Pipeline
- Major Roads
- Native Allotments, as digitized by BLM
- Portions of Mapped Faults that Intersect the proposed B2F Pipeline (As mapped by USGS Open File 98-133-A)

Beluga to Fairbanks Natural Gas Pipeline

Figure 24 of 26

1 0.5 0 1 Mile



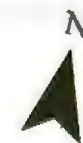
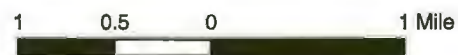
Date Printed: March 2, 2010



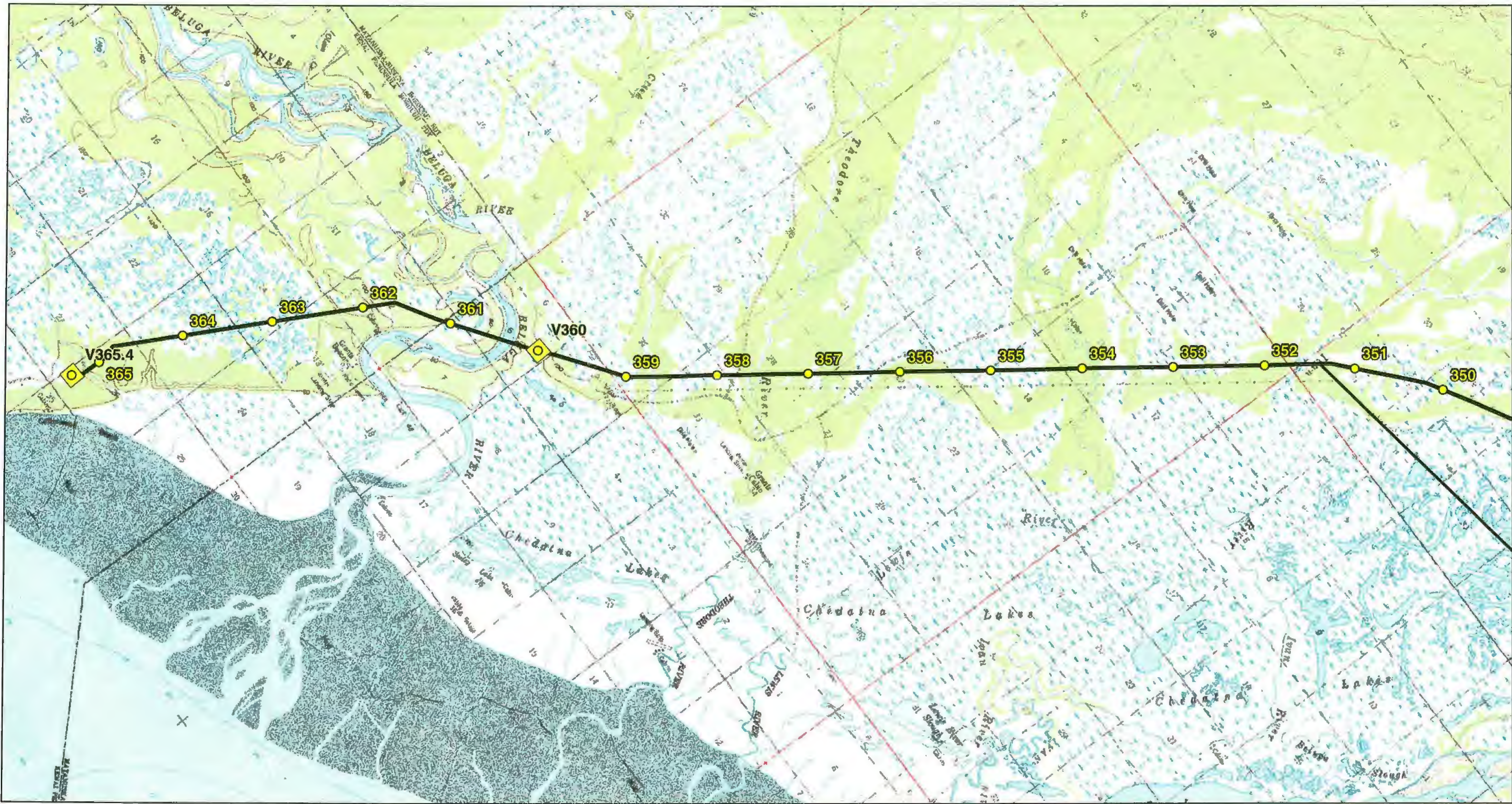
- Proposed Pipeline Corridor
- Pipeline Milepost
- Valve Site
- Compressor Station
- Trans Alaska Pipeline
- Major Roads
- Native Allotments, as digitized by BLM
- Portions of Mapped Faults that Intersect the proposed B2F Pipeline
(As mapped by USGS Open File 98-133-A)

Beluga to Fairbanks Natural Gas Pipeline

Figure 25 of 26



Date Printed: March 2, 2010



Location
Map

- Proposed Pipeline Corridor
- Pipeline Milepost
- Valve Site
- Compressor Station
- Trans Alaska Pipeline
- Major Roads
- Native Allotments, as digitized by BLM
- Portions of Mapped Faults that Intersect the proposed B2F Pipeline
(As mapped by USGS Open File 98-133-A)

Beluga to Fairbanks Natural Gas Pipeline

Figure 26 of 26

1 0.5 0 1 Mile



 DOWL HKM

 Alaska
Natural Gas Development Authority

Date Printed: March 2, 2010